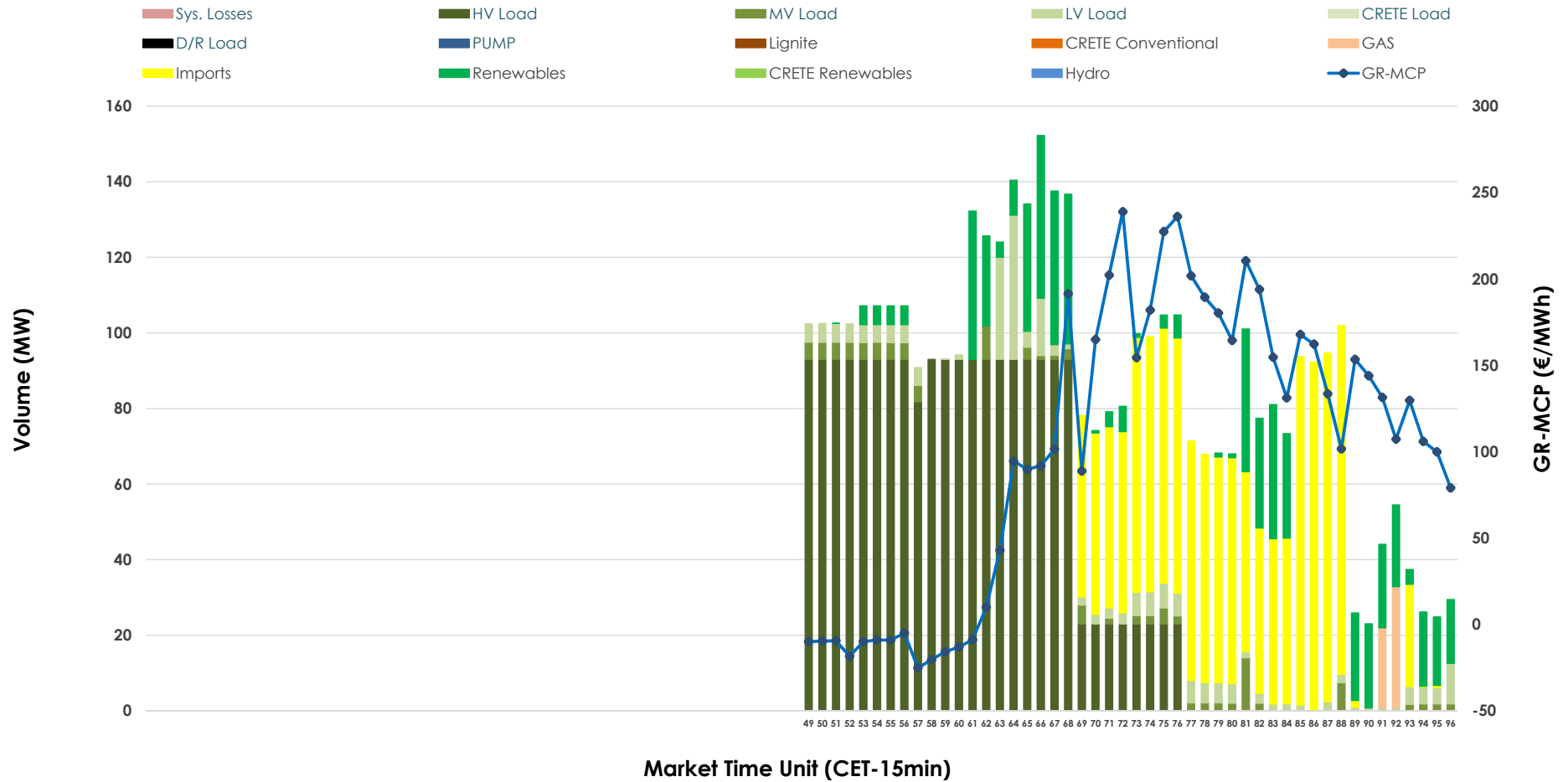


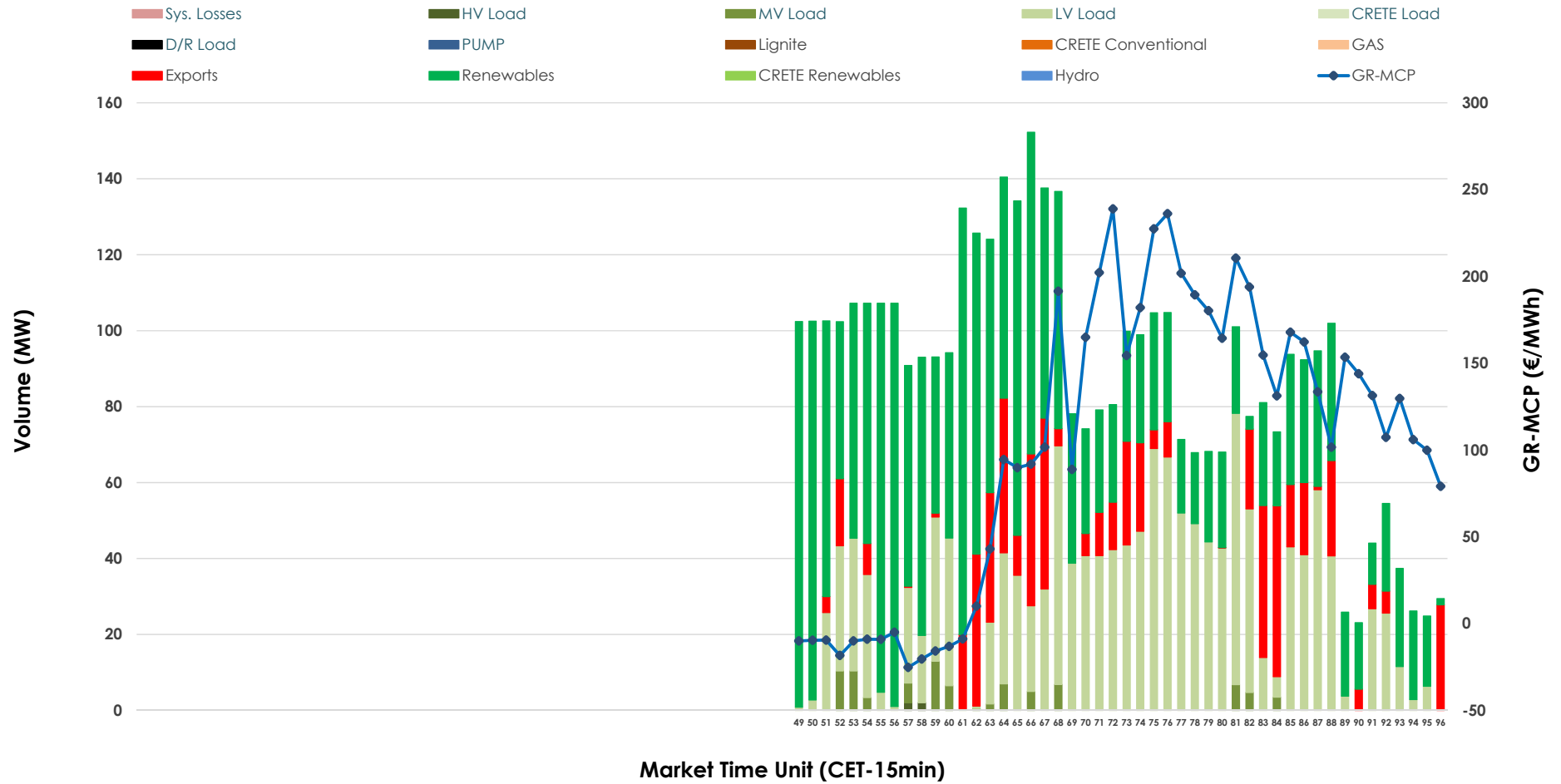


IDA '3' Market Outlook

10.03.2026 IDA '3' Market - Sell



10.03.2026 IDA '3' Market - Buy



GR Bidding Zone Weekly Figures

Delivery Day	04.03	05.03	06.03	07.03	08.03	09.03	10.03
	👇 -6%	👇 -14%	👇 -5%	👆 11%	👇 -14%	👆 11%	👆 15%
Avg.MCP (€/MWh)	103.10	88.40	83.98	93.54	80.36	88.82	101.98
Max.MCP (€/MWh)	262.17	208.87	198.96	177.27	144.90	249.48	238.89
Min.MCP (€/MWh)	-6.13	-13.79	-35.00	-11.70	-14.97	-17.30	-25.24
	👆 32%	👇 -14%	👆 77%	👇 -32%	👆 -1%	👆 0%	👆 35%
Tot.Vol(GWh)	1.55	1.33	2.35	1.59	1.58	1.58	2.13

Trades by Order Type

Delivery Day		04.03	05.03	06.03	07.03	08.03	09.03	10.03	
Ord Price Type		Sell & Buy Trades in (GWh) per Price Type							(%)
PPT	(S)	0.000	0.000	0.000	0.000	0.000	0.000	0.000	0.00%
HBD	(S)	0.644	0.420	1.125	0.543	0.744	0.695	0.747	69.95%
BLK	(S)	0.000	0.000	0.000	0.000	0.000	0.000	0.000	0.00%
CPL	(S)	0.132	0.246	0.051	0.254	0.047	0.095	0.321	30.05%
PPT	(B)	0.000	0.000	0.000	0.000	0.000	0.000	0.000	0.00%
HBD	(B)	0.562	0.550	1.112	0.651	0.679	0.691	0.924	86.57%
BLK	(B)	0.000	0.000	0.000	0.000	0.000	0.000	0.000	0.00%
CPL	(B)	0.214	0.116	0.064	0.146	0.112	0.099	0.143	13.43%
		Sell & Buy Orders Traded per Price Type							(%)
PPT	(S)	0	0	0	0	0	0	0	0.00%
HBD	(S)	126	131	162	96	107	161	181	100.00%
BLK	(S)	0	0	0	0	0	0	0	0.00%
PPT	(B)	0	0	0	0	0	0	0	0.00%
HBD	(B)	261	216	217	168	187	153	234	100.00%
BLK	(B)	0	0	0	0	0	0	0	0.00%

- MCP** Market Clearing Price (€/MWh)
- PPT** Priority Price-Taking
- HBD** Hybrid
- BLK** Block
- CPL** Market Coupling Flow

Trade's Volume Mix

	Sell - MWh	Buy - MWh	
Lignite (0.0%)	0	0	(0.0%)
Crete Conv. (0.0%)	0	0	(0.0%)
Gas (1.2%)	13	0	(0.0%)
Hydro (0.0%)	0	0	(0.0%)
Imports (30.1%)	321		
RES (13.0%)	139	541	(50.7%)
Crete RES (0.0%)	0	0	(0.0%)
HV Load (47.6%)	508	1	(0.1%)
MV Load (2.6%)	28	21	(2.0%)
LV Load (5.4%)	58	361	(33.8%)
Crete Load (0.0%)	0	0	(0.0%)
Pumping (0.0%)	0	0	(0.0%)
Exports		143	(13.4%)
Sys.Losses (0.0%)	0	0	(0.0%)
D/R Load (0.0%)	0	0	(0.0%)

