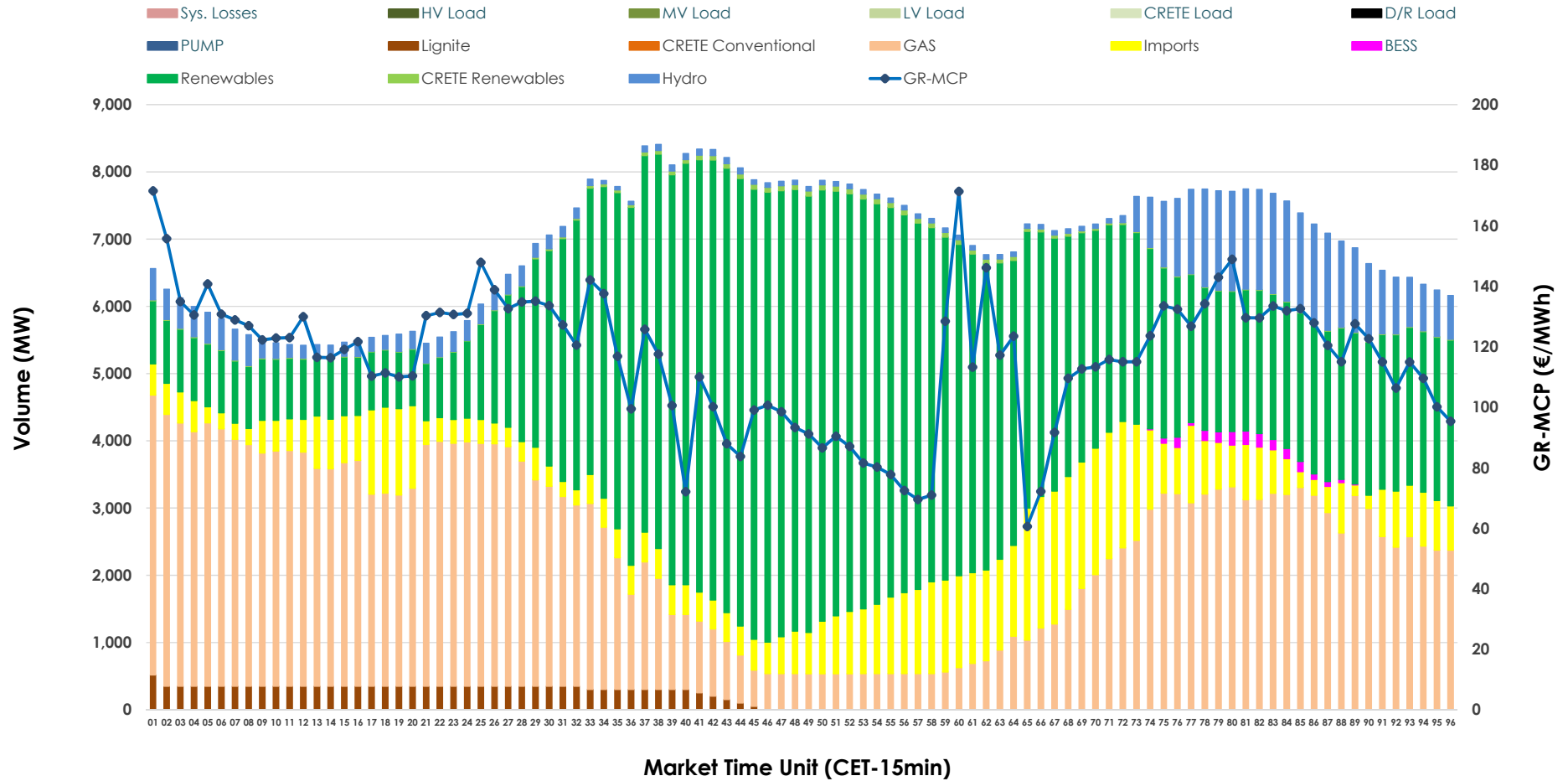


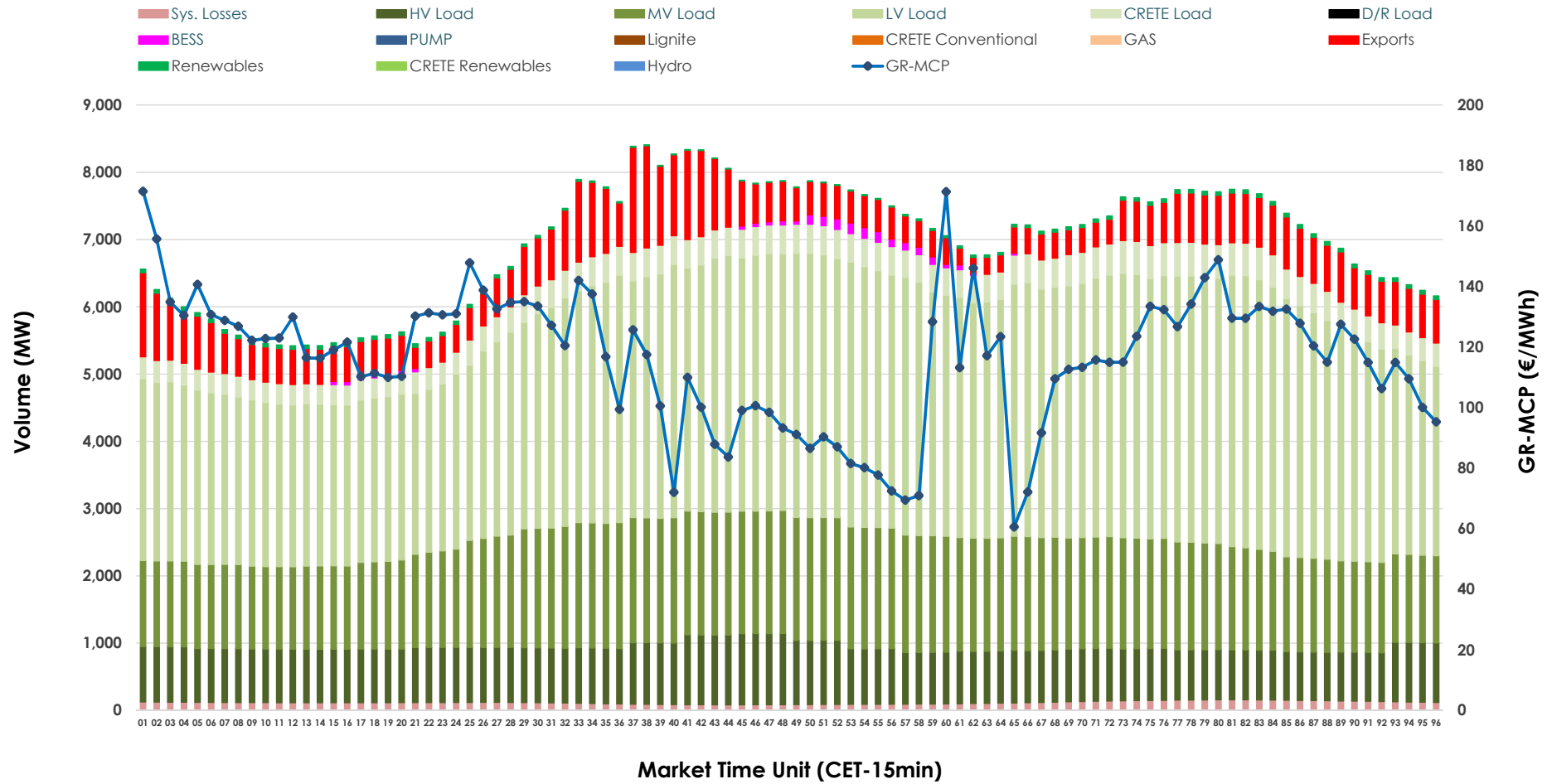


# Day-Ahead Market Outlook

## 12.06.2026 Day-Ahead Market - Sell



## 12.06.2026 Day-Ahead Market - Buy



### GR Bidding Zone Weekly Figures

Delivery Day	06.06	07.06	08.06	09.06	10.06	11.06	12.06
	👇 -29%	👇 -29%	👆 65%	👆 20%	👇 -9%	👇 -3%	👆 16%
<b>Avg.MCP (€/MWh)</b>	81.97	57.86	95.42	114.46	104.15	100.74	116.43
<b>Max.MCP (€/MWh)</b>	156.59	144.30	198.86	221.03	200.90	167.58	171.46
<b>Min.MCP (€/MWh)</b>	0.00	-5.00	-0.01	-0.01	-0.01	15.37	60.59
	👇 -4%	👇 -9%	👆 26%	👆 3%	👇 -2%	👇 -2%	👇 -4%
<b>Tot.Vol(GWh)</b>	306.90	280.10	351.55	361.76	354.80	348.94	333.52

### Trades by Order Type

Delivery Day		06.06	07.06	08.06	09.06	10.06	11.06	12.06	
<b>Ord Price Type</b>		<b>Sell &amp; Buy Trades in (GWh) per Price Type</b>							<b>(%)</b>
<b>PPT</b>	(S)	56.563	59.103	72.630	65.539	61.558	57.801	57.093	34.24%
<b>HBD</b>	(S)	63.063	47.065	72.260	79.650	77.318	74.310	63.660	38.18%
<b>BLK</b>	(S)	30.143	21.989	30.502	33.822	37.882	36.463	32.591	19.54%
<b>CPL</b>	(S)	3.683	11.896	0.382	1.870	0.639	5.898	13.414	8.04%
<b>PPT</b>	(B)	15.317	16.008	16.525	15.928	16.475	16.757	16.583	9.94%
<b>HBD</b>	(B)	128.886	123.201	142.899	146.848	145.565	147.692	144.354	86.56%
<b>BLK</b>	(B)	0.000	0.000	0.000	0.000	0.000	0.000	0.000	0.00%
<b>CPL</b>	(B)	9.249	0.843	16.351	18.105	15.358	10.022	5.821	3.49%
		<b>Sell &amp; Buy Orders Traded per Price Type</b>							<b>(%)</b>
<b>PPT</b>	(S)	1725	1683	1794	1689	1649	1662	1672	33.14%
<b>HBD</b>	(S)	3457	2774	3328	3724	3651	3597	3357	66.54%
<b>BLK</b>	(S)	13	10	14	18	17	15	16	0.32%
<b>PPT</b>	(B)	2329	2349	2408	2379	2333	2348	2344	37.89%
<b>HBD</b>	(B)	3900	3851	3616	3938	4000	3995	3843	62.11%
<b>BLK</b>	(B)	0	0	0	0	0	0	0	0.00%

**MCP** Market Clearing Price (€/MWh)  
**PPT** Priority Price-Taking  
**HBD** Hybrid  
**BLK** Block  
**CPL** Market Coupling Flow

### Trade's Volume Mix

		Sell - MWh	Buy - MWh	
<b>Lignite</b>	(2.2%)	3,638	0	(0.0%)
<b>Crete Conv.</b>	(0.0%)	0	0	(0.0%)
<b>Gas</b>	(33.5%)	55,943	0	(0.0%)
<b>Hydro</b>	(6.0%)	9,966	0	(0.0%)
<b>Imports</b>	(11.2%)	18,595		
<b>RES</b>	(46.4%)	77,383	955	(0.6%)
<b>Crete RES</b>	(0.5%)	765	0	(0.0%)
<b>BESS</b>	(0.3%)	468	531	(0.3%)
<b>HV Load</b>	(0.0%)	0	19,787	(11.9%)
<b>MV Load</b>	(0.0%)	0	37,698	(22.6%)
<b>LV Load</b>	(0.0%)	0	80,002	(48.0%)
<b>Crete Load</b>	(0.0%)	0	9,587	(5.7%)
<b>Pumping</b>	(0.0%)	0	0	(0.0%)
<b>Exports</b>			15,424	(9.2%)
<b>Sys.Losses</b>	(0.0%)	0	2,775	(1.7%)
<b>D/R Load</b>	(0.0%)	0	0	(0.0%)

