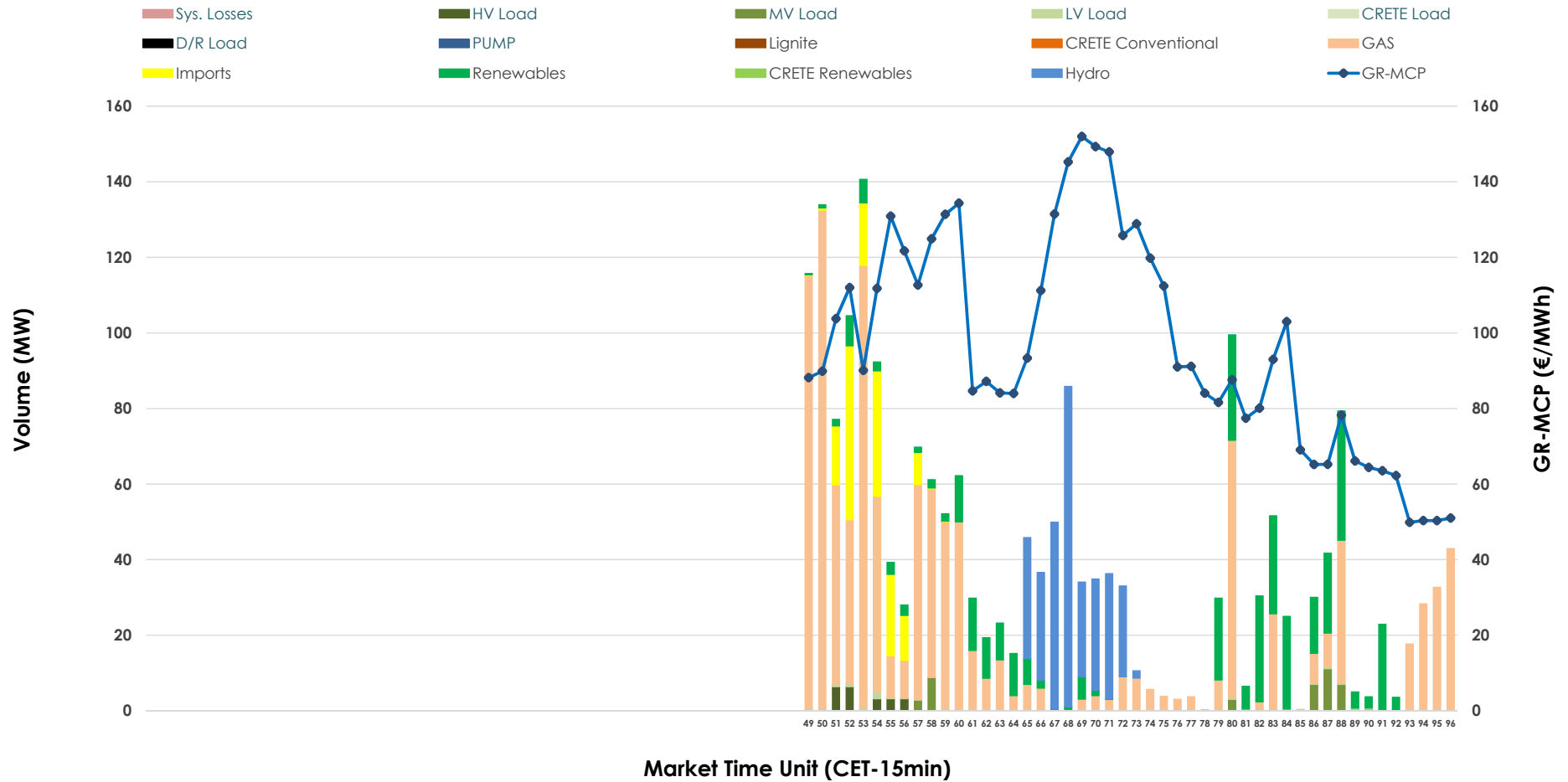


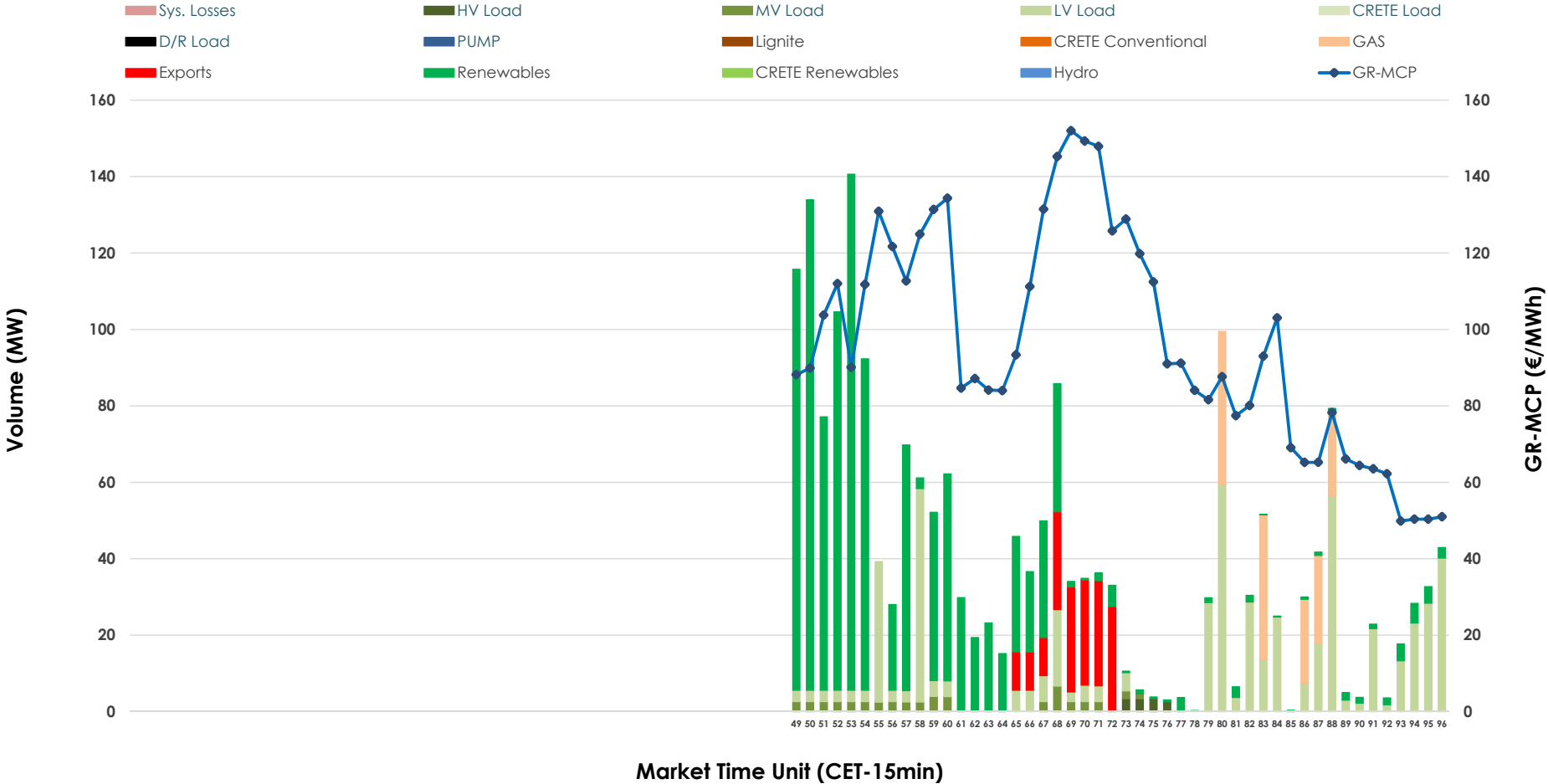


# IDA '3' Market Outlook

28.01.2026 IDA '3' Market - Sell



### 28.01.2026 IDA '3' Market - Buy



### GR Bidding Zone Weekly Figures

Delivery Day	22.01	23.01	24.01	25.01	26.01	27.01	28.01
	↑ 50%	↓ -37%	↘ -22%	↘ -26%	↗ 6%	↗ 16%	↘ -21%
<b>Avg.MCP (€/MWh)</b>	275.40	173.58	134.62	99.17	105.52	122.71	96.53
<b>Max.MCP (€/MWh)</b>	445.00	275.57	158.82	138.36	207.65	208.50	152.00
<b>Min.MCP (€/MWh)</b>	117.20	103.10	103.80	2.90	58.16	43.40	49.88
	↗ 12%	↗ 14%	↘ -16%	↗ 6%	↘ -23%	↗ 16%	↓ -54%
<b>Tot.Vol(GWh)</b>	2.39	2.73	2.30	2.43	1.87	2.18	1.00

### Trades by Order Type

Delivery Day		22.01	23.01	24.01	25.01	26.01	27.01	28.01	
<b>Ord Price Type</b>		<b>Sell &amp; Buy Trades in (GWh) per Price Type</b>							<b>(%)</b>
<b>PPT</b>	(S)	0.000	0.000	0.000	0.000	0.000	0.000	0.000	0.00%
<b>HBD</b>	(S)	1.029	1.110	0.798	0.682	0.924	0.945	0.461	92.27%
<b>BLK</b>	(S)	0.000	0.000	0.000	0.000	0.000	0.000	0.000	0.00%
<b>CPL</b>	(S)	0.166	0.254	0.351	0.532	0.014	0.144	0.039	7.73%
<b>PPT</b>	(B)	0.000	0.000	0.000	0.000	0.000	0.000	0.000	0.00%
<b>HBD</b>	(B)	0.616	0.295	0.653	1.013	0.929	0.423	0.458	91.72%
<b>BLK</b>	(B)	0.000	0.000	0.000	0.000	0.000	0.000	0.000	0.00%
<b>CPL</b>	(B)	0.578	1.069	0.496	0.201	0.008	0.666	0.041	8.28%
		<b>Sell &amp; Buy Orders Traded per Price Type</b>							<b>(%)</b>
<b>PPT</b>	(S)	0	0	0	0	0	0	0	0.00%
<b>HBD</b>	(S)	222	233	249	195	193	164	127	100.00%
<b>BLK</b>	(S)	0	0	0	0	0	0	0	0.00%
<b>PPT</b>	(B)	0	0	0	0	0	0	0	0.00%
<b>HBD</b>	(B)	141	139	189	219	306	271	163	100.00%
<b>BLK</b>	(B)	0	0	0	0	0	0	0	0.00%

- MCP** Market Clearing Price (€/MWh)
- PPT** Priority Price-Taking
- HBD** Hybrid
- BLK** Block
- CPL** Market Coupling Flow

### Trade's Volume Mix

		Sell - MWh		Buy - MWh	
<b>Lignite</b>	(0.0%)	0	0	0	(0.0%)
<b>Crete Conv.</b>	(0.0%)	0	0	0	(0.0%)
<b>Gas</b>	(55.9%)	279	36	36	(7.3%)
<b>Hydro</b>	(15.4%)	77	0	0	(0.0%)
<b>Imports</b>	(7.7%)	39	0	0	(0.0%)
<b>RES</b>	(17.2%)	86	267	267	(53.5%)
<b>Crete RES</b>	(0.0%)	0	0	0	(0.0%)
<b>HV Load</b>	(1.1%)	6	3	3	(0.6%)
<b>MV Load</b>	(2.0%)	10	13	13	(2.7%)
<b>LV Load</b>	(0.6%)	3	138	138	(27.7%)
<b>Crete Load</b>	(0.0%)	0	0	0	(0.0%)
<b>Pumping</b>	(0.0%)	0	0	0	(0.0%)
<b>Exports</b>		0	41	41	(8.3%)
<b>Sys.Losses</b>	(0.0%)	0	0	0	(0.0%)
<b>D/R Load</b>	(0.0%)	0	0	0	(0.0%)

