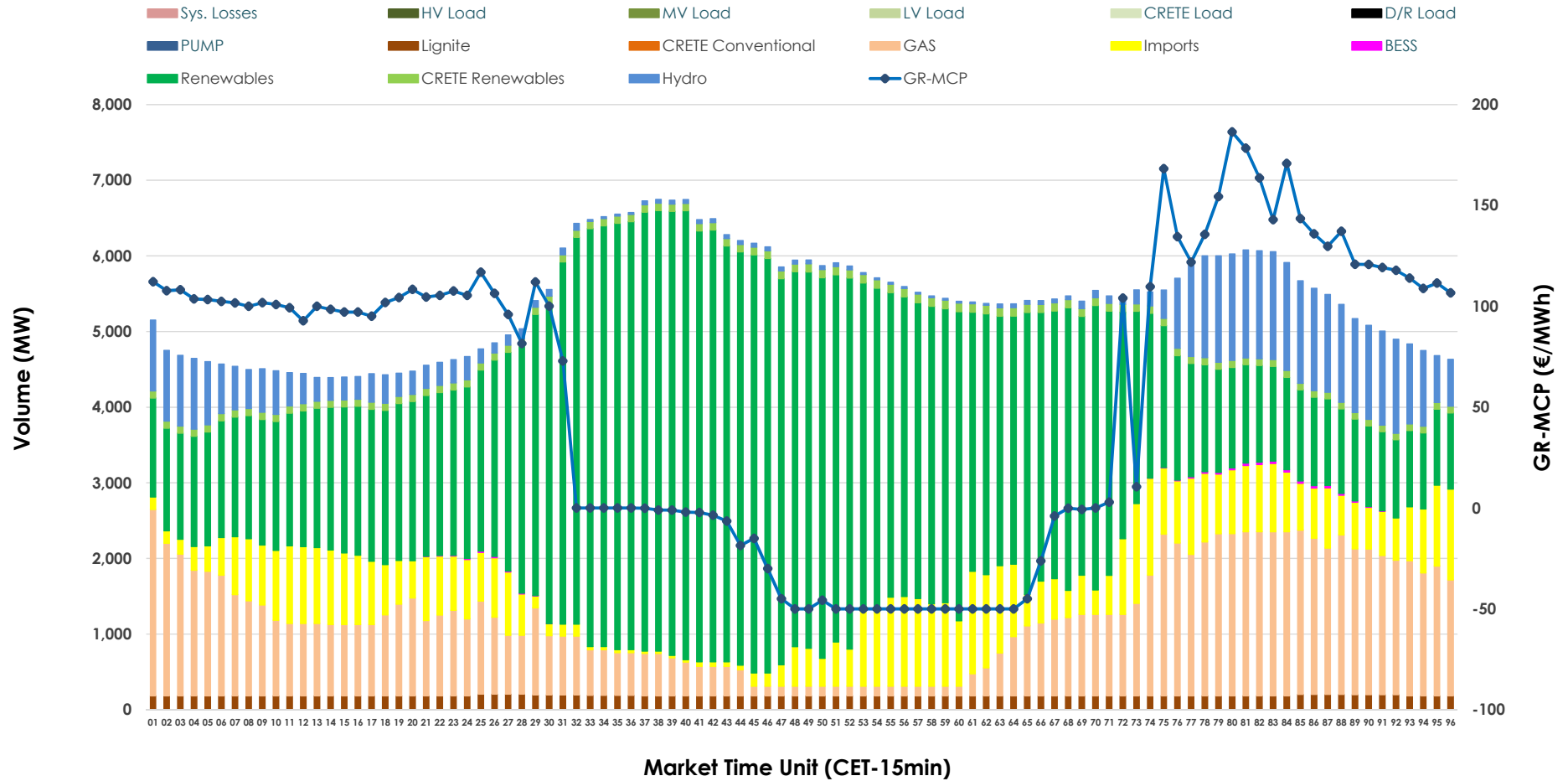


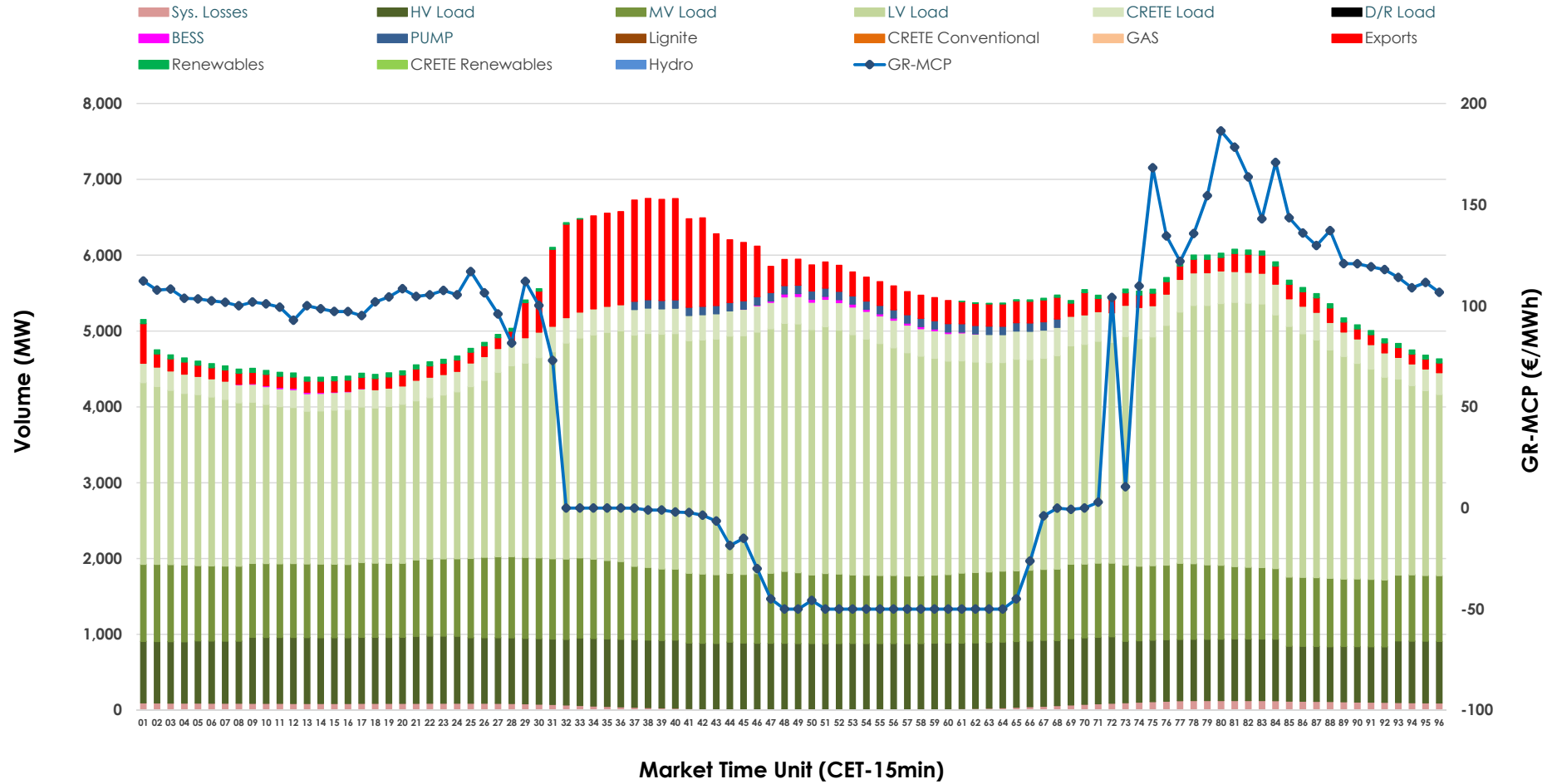


Day-Ahead Market Outlook

25.04.2026 Day-Ahead Market - Sell



25.04.2026 Day-Ahead Market - Buy



GR Bidding Zone Weekly Figures

Delivery Day	19.04	20.04	21.04	22.04	23.04	24.04	25.04
	↗ 6%	↗ 16%	→ 0%	↑ 38%	↘ -23%	↘ -13%	↘ -27%
Avg.MCP (€/MWh)	71.68	83.41	83.07	114.50	88.12	76.59	55.72
Max.MCP (€/MWh)	166.45	179.47	175.83	292.39	238.11	232.13	186.45
Min.MCP (€/MWh)	-8.30	-0.10	-0.01	9.20	0.00	-19.68	-50.00
	↘ -11%	↗ 12%	↗ 3%	↘ -5%	↗ 8%	↘ -6%	↘ -10%
Tot.Vol(GWh)	260.85	293.37	302.62	286.00	307.65	289.22	259.84

Trades by Order Type

Delivery Day		19.04	20.04	21.04	22.04	23.04	24.04	25.04	
Ord Price Type		Sell & Buy Trades in (GWh) per Price Type							(%)
PPT	(S)	54.859	50.668	56.261	52.662	53.859	58.112	61.249	47.14%
HBD	(S)	50.588	64.774	64.943	54.230	64.423	56.577	41.071	31.61%
BLK	(S)	19.613	21.500	24.410	26.046	27.200	26.900	16.577	12.76%
CPL	(S)	5.365	9.746	5.696	10.061	8.343	3.021	11.024	8.49%
PPT	(B)	11.769	12.952	12.970	12.705	12.529	12.315	12.979	9.99%
HBD	(B)	111.146	124.208	122.287	123.424	138.995	124.015	113.788	87.58%
BLK	(B)	0.000	0.000	0.000	0.000	0.000	0.000	0.000	0.00%
CPL	(B)	7.510	9.527	16.052	6.871	2.301	8.279	3.154	2.43%
		Sell & Buy Orders Traded per Price Type							(%)
PPT	(S)	1522	1582	1687	1670	1645	1653	1549	40.57%
HBD	(S)	2585	2893	2905	3209	3014	2583	2261	59.22%
BLK	(S)	12	8	11	11	14	15	8	0.21%
PPT	(B)	2258	2318	2312	2317	2217	2275	2245	34.45%
HBD	(B)	4123	4138	4183	4081	4532	4111	4272	65.55%
BLK	(B)	0	0	0	0	0	0	0	0.00%

- MCP** Market Clearing Price (€/MWh)
- PPT** Priority Price-Taking
- HBD** Hybrid
- BLK** Block
- CPL** Market Coupling Flow

Trade's Volume Mix

		Sell - MWh	Buy - MWh	
Lignite	(3.4%)	4,469	0	(0.0%)
Crete Conv.	(0.0%)	0	0	(0.0%)
Gas	(19.7%)	25,574	0	(0.0%)
Hydro	(7.9%)	10,321	0	(0.0%)
Imports	(11.8%)	15,330		
RES	(55.2%)	71,765	781	(0.6%)
Crete RES	(1.8%)	2,340	0	(0.0%)
BESS	(0.1%)	121	142	(0.1%)
HV Load	(0.0%)	0	20,279	(15.6%)
MV Load	(0.0%)	0	23,048	(17.7%)
LV Load	(0.0%)	0	66,311	(51.0%)
Crete Load	(0.0%)	0	7,918	(6.1%)
Pumping	(0.0%)	0	880	(0.7%)
Exports			8,838	(6.8%)
Sys.Losses	(0.0%)	0	1,724	(1.3%)
D/R Load	(0.0%)	0	0	(0.0%)

