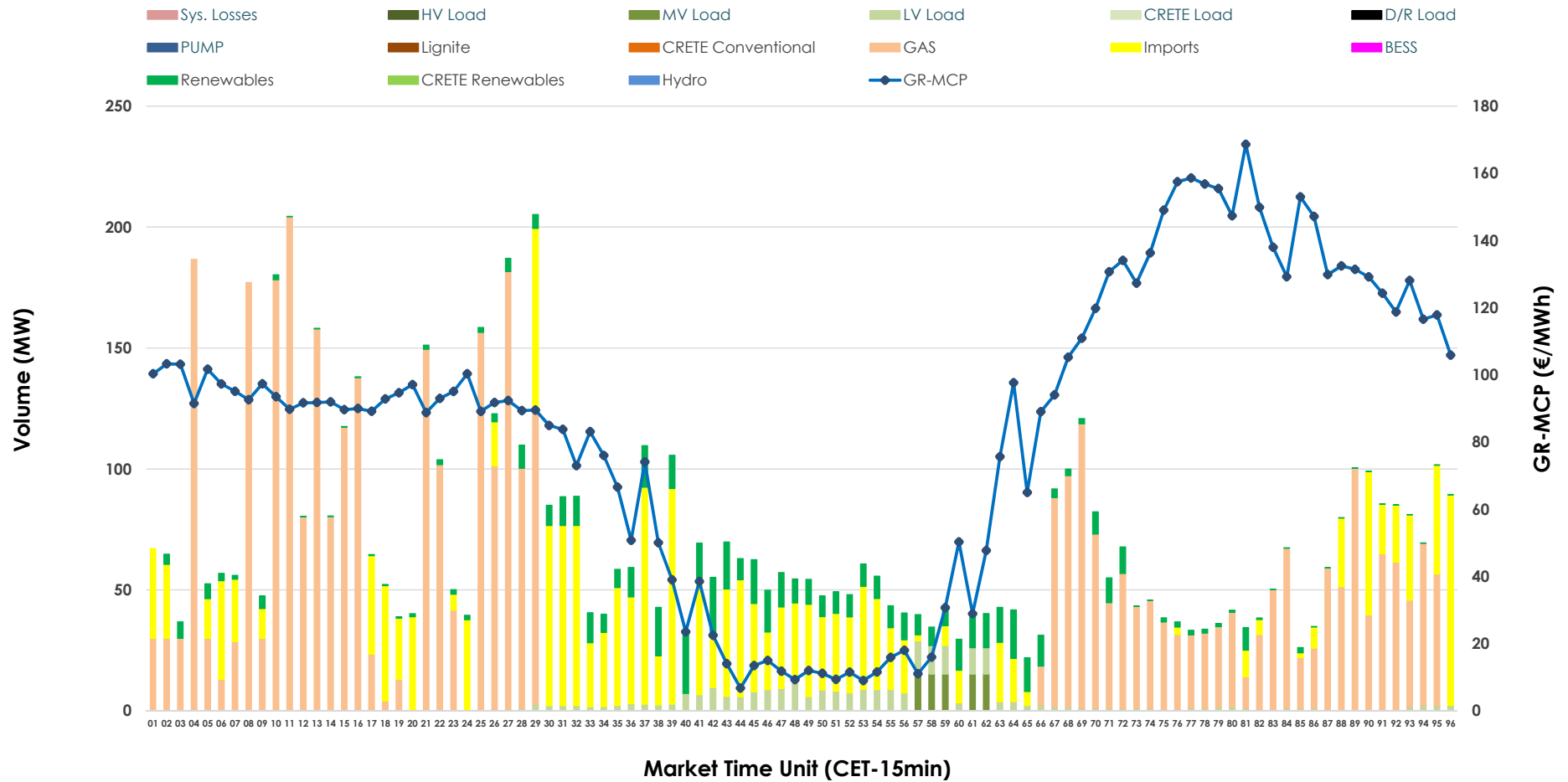


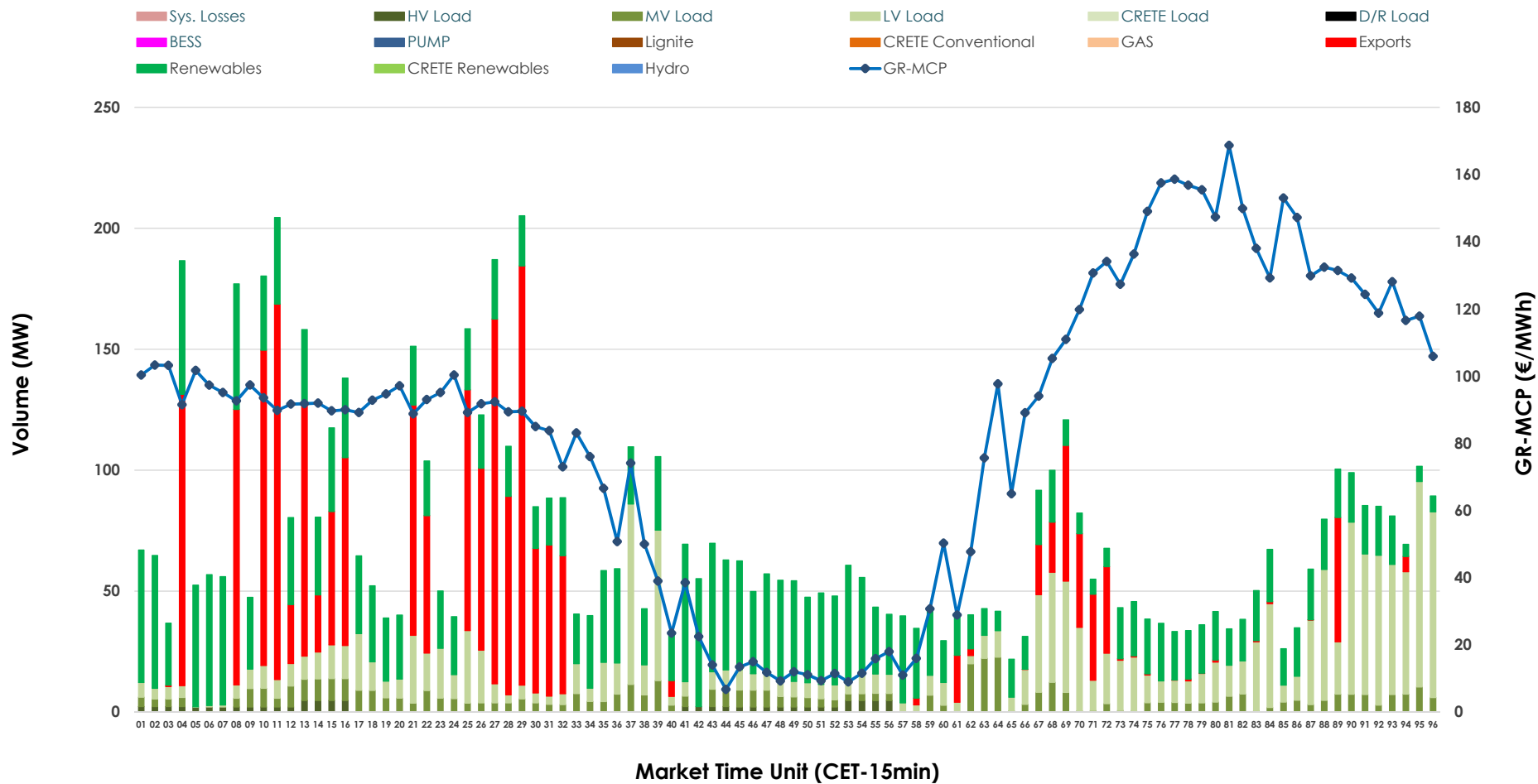


# IDA '1' Market Outlook

28.03.2026 IDA '1' Market - Sell



### 28.03.2026 IDA '1' Market - Buy



### GR Bidding Zone Weekly Figures

Delivery Day	22.03	23.03	24.03	25.03	26.03	27.03	28.03
	👇 -10%	👆 7%	👇 -26%	👇 -29%	👆 7%	👆 14%	👇 -9%
<b>Avg.MCP (€/MWh)</b>	83.38	146.60	108.40	77.08	82.14	93.92	85.15
<b>Max.MCP (€/MWh)</b>	192.93	279.92	206.78	206.42	175.68	158.93	168.64
<b>Min.MCP (€/MWh)</b>	-11.08	62.90	9.41	-8.09	-5.14	-2.58	6.75
		👇 -26%	👆 26%	👆 15%	👇 -14%	👇 -8%	
<b>Tot.Vol(GWh)</b>	N/M	4.08	3.04	3.82	4.41	3.77	3.48

### Trades by Order Type

Delivery Day		22.03	23.03	24.03	25.03	26.03	27.03	28.03	
<b>Ord Price Type</b>		<b>Sell &amp; Buy Trades in (GWh) per Price Type</b>							<b>(%)</b>
<b>PPT</b>	(S)	0.000	0.000	0.000	0.000	0.000	0.000	0.000	0.00%
<b>HBD</b>	(S)	0.000	1.492	1.145	1.727	2.119	1.303	1.243	71.55%
<b>BLK</b>	(S)	0.000	0.000	0.000	0.000	0.000	0.000	0.000	0.00%
<b>CPL</b>	(S)	0.000	0.546	0.374	0.185	0.084	0.584	0.494	28.45%
<b>PPT</b>	(B)	0.000	0.000	0.000	0.000	0.000	0.000	0.000	0.00%
<b>HBD</b>	(B)	0.000	1.585	1.063	1.606	1.166	1.722	1.233	70.95%
<b>BLK</b>	(B)	0.000	0.000	0.000	0.000	0.000	0.000	0.000	0.00%
<b>CPL</b>	(B)	0.000	0.453	0.455	0.305	1.037	0.165	0.505	29.05%
		<b>Sell &amp; Buy Orders Traded per Price Type</b>							<b>(%)</b>
<b>PPT</b>	(S)	0	0	0	0	0	0	0	0.00%
<b>HBD</b>	(S)	208	219	267	234	203	261	290	100.00%
<b>BLK</b>	(S)	0	0	0	0	0	0	0	0.00%
<b>PPT</b>	(B)	0	0	0	0	0	0	0	0.00%
<b>HBD</b>	(B)	755	773	794	865	738	860	694	100.00%
<b>BLK</b>	(B)	0	0	0	0	0	0	0	0.00%

- MCP** Market Clearing Price (€/MWh)
- PPT** Priority Price-Taking
- HBD** Hybrid
- BLK** Block
- CPL** Market Coupling Flow

### Trade's Volume Mix

	Sell - MWh	Buy - MWh	
<b>Lignite</b> (0.0%)	0	0	(0.0%)
<b>Crete Conv.</b> (0.0%)	0	0	(0.0%)
<b>Gas</b> (57.9%)	1,007	0	(0.0%)
<b>Hydro</b> (0.0%)	0	0	(0.0%)
<b>Imports</b> (28.4%)	494		
<b>RES</b> (8.6%)	150	659	(37.9%)
<b>Crete RES</b> (0.0%)	0	0	(0.0%)
<b>BESS</b> (0.0%)	0	0	(0.0%)
<b>HV Load</b> (0.0%)	0	23	(1.3%)
<b>MV Load</b> (1.1%)	19	130	(7.5%)
<b>LV Load</b> (3.9%)	68	422	(24.3%)
<b>Crete Load</b> (0.0%)	0	0	(0.0%)
<b>Pumping</b> (0.0%)	0	0	(0.0%)
<b>Exports</b>		505	(29.1%)
<b>Sys.Losses</b> (0.0%)	0	0	(0.0%)
<b>D/R Load</b> (0.0%)	0	0	(0.0%)

