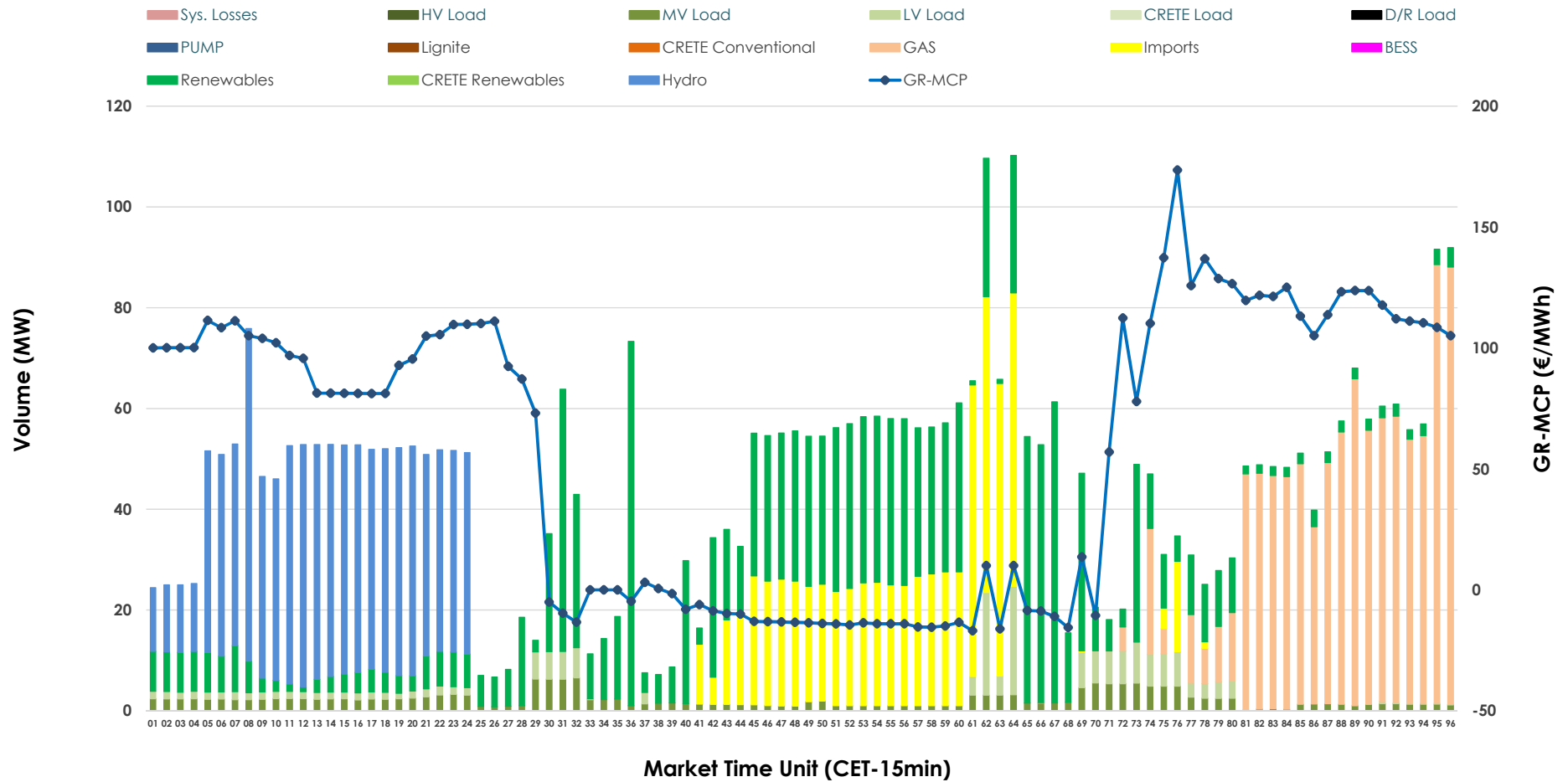


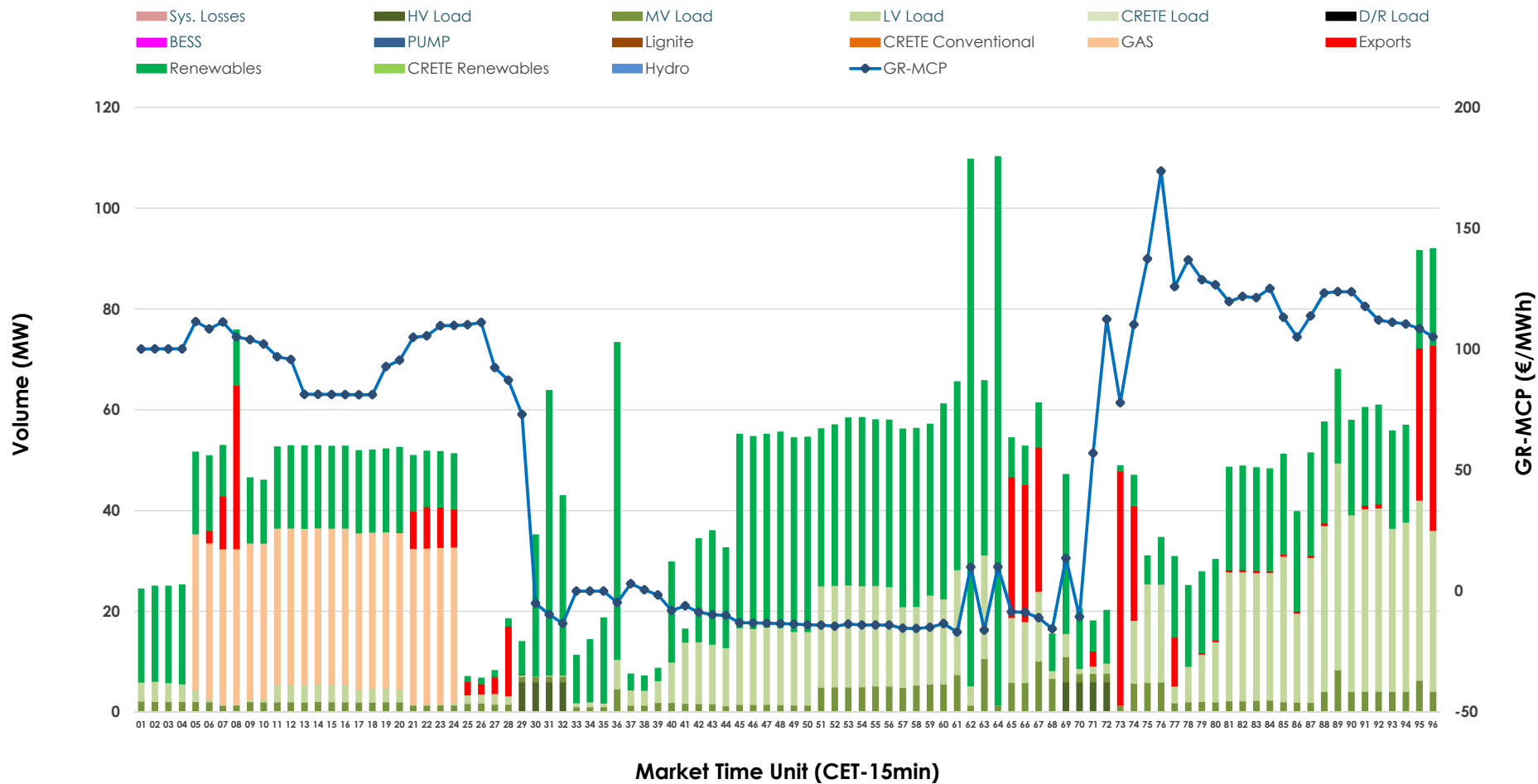


# IDA '1' Market Outlook

02.05.2026 IDA '1' Market - Sell



### 02.05.2026 IDA '1' Market - Buy



### GR Bidding Zone Weekly Figures

Delivery Day	26.04	27.04	28.04	29.04	30.04	01.05	02.05
	👇 -14%	👆 63%	👇 -5%	👆 32%	👇 -14%	👇 -37%	👆 9%
<b>Avg.MCP (€/MWh)</b>	47.33	77.34	73.58	97.14	83.69	52.40	57.37
<b>Max.MCP (€/MWh)</b>	137.70	218.32	191.45	231.24	223.93	114.42	173.60
<b>Min.MCP (€/MWh)</b>	-50.00	-12.00	-25.96	-5.00	-12.88	-19.99	-16.90
	👇 -48%	👆 11%	👇 -16%	👇 -4%	👆 35%	👆 27%	👇 -49%
<b>Tot.Vol(GWh)</b>	2.77	3.08	2.60	2.48	3.36	4.28	2.20

### Trades by Order Type

Delivery Day		26.04	27.04	28.04	29.04	30.04	01.05	02.05	
<b>Ord Price Type</b>		<b>Sell &amp; Buy Trades in (GWh) per Price Type</b>							<b>(%)</b>
<b>PPT</b>	(S)	0.000	0.000	0.000	0.000	0.000	0.000	0.000	0.00%
<b>HBD</b>	(S)	0.849	1.230	1.114	1.061	1.345	0.790	0.925	84.04%
<b>BLK</b>	(S)	0.000	0.000	0.000	0.000	0.000	0.000	0.000	0.00%
<b>CPL</b>	(S)	0.535	0.309	0.185	0.181	0.334	1.351	0.176	15.96%
<b>PPT</b>	(B)	0.000	0.000	0.000	0.000	0.000	0.000	0.000	0.00%
<b>HBD</b>	(B)	1.314	1.192	0.953	1.112	1.102	2.090	1.016	92.37%
<b>BLK</b>	(B)	0.000	0.000	0.000	0.000	0.000	0.000	0.000	0.00%
<b>CPL</b>	(B)	0.070	0.347	0.346	0.130	0.577	0.051	0.084	7.63%
		<b>Sell &amp; Buy Orders Traded per Price Type</b>							<b>(%)</b>
<b>PPT</b>	(S)	0	0	0	0	0	0	0	0.00%
<b>HBD</b>	(S)	288	117	383	305	258	385	389	100.00%
<b>BLK</b>	(S)	0	0	0	0	0	0	0	0.00%
<b>PPT</b>	(B)	0	0	0	0	0	0	0	0.00%
<b>HBD</b>	(B)	648	576	651	630	759	691	1017	100.00%
<b>BLK</b>	(B)	0	0	0	0	0	0	0	0.00%

- MCP** Market Clearing Price (€/MWh)
- PPT** Priority Price-Taking
- HBD** Hybrid
- BLK** Block
- CPL** Market Coupling Flow

### Trade's Volume Mix

	Sell - MWh	Buy - MWh	
<b>Lignite</b> (0.0%)	0	0	(0.0%)
<b>Crete Conv.</b> (0.0%)	0	0	(0.0%)
<b>Gas</b> (21.9%)	241	155	(14.1%)
<b>Hydro</b> (21.3%)	234	0	(0.0%)
<b>Imports</b> (16.0%)	176		
<b>RES</b> (32.1%)	353	508	(46.2%)
<b>Crete RES</b> (0.0%)	0	0	(0.0%)
<b>BESS</b> (0.0%)	0	0	(0.0%)
<b>HV Load</b> (0.0%)	0	12	(1.1%)
<b>MV Load</b> (4.8%)	53	71	(6.4%)
<b>LV Load</b> (4.0%)	44	271	(24.6%)
<b>Crete Load</b> (0.0%)	0	0	(0.0%)
<b>Pumping</b> (0.0%)	0	0	(0.0%)
<b>Exports</b>		84	(7.6%)
<b>Sys.Losses</b> (0.0%)	0	0	(0.0%)
<b>D/R Load</b> (0.0%)	0	0	(0.0%)

