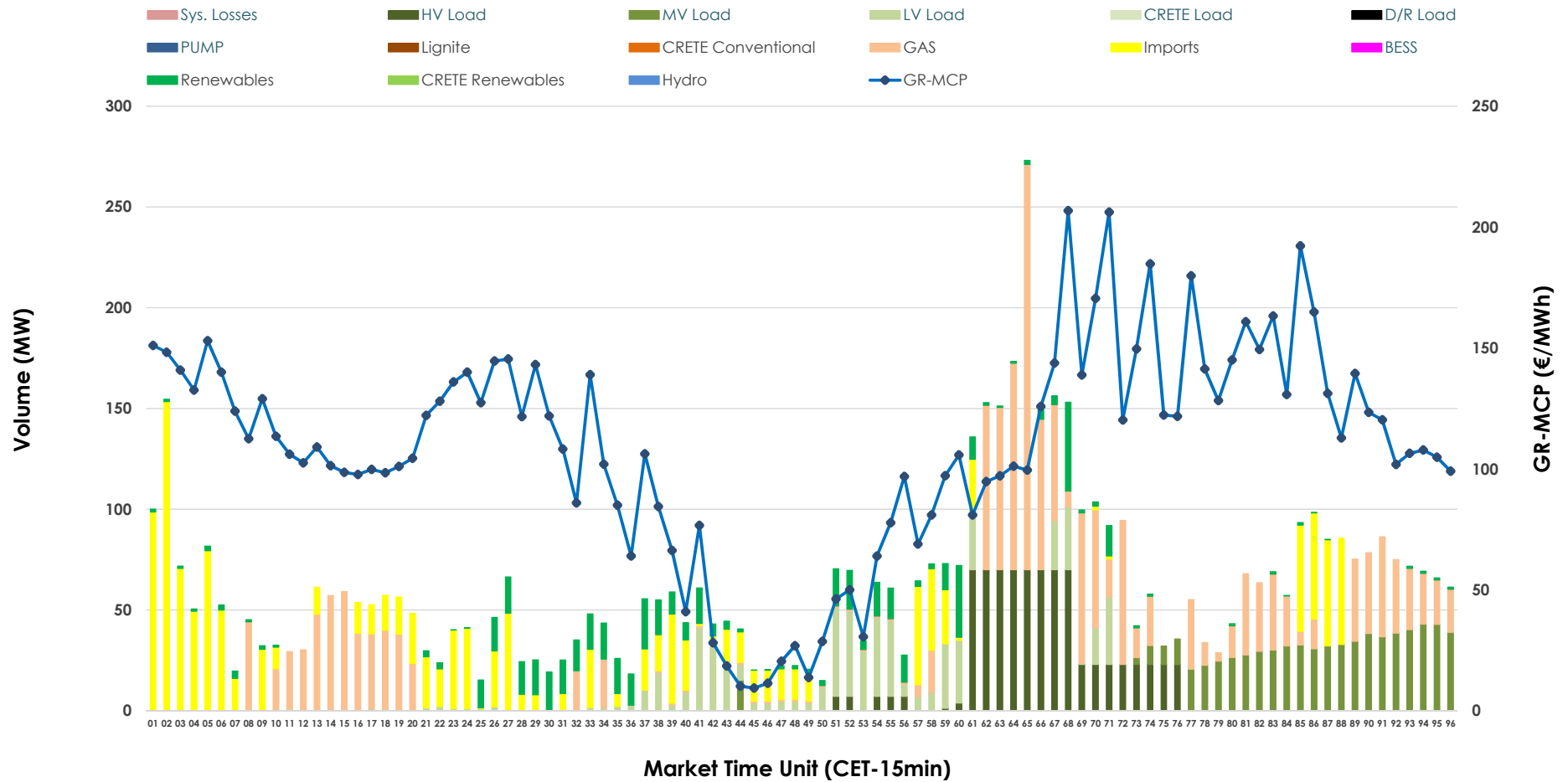


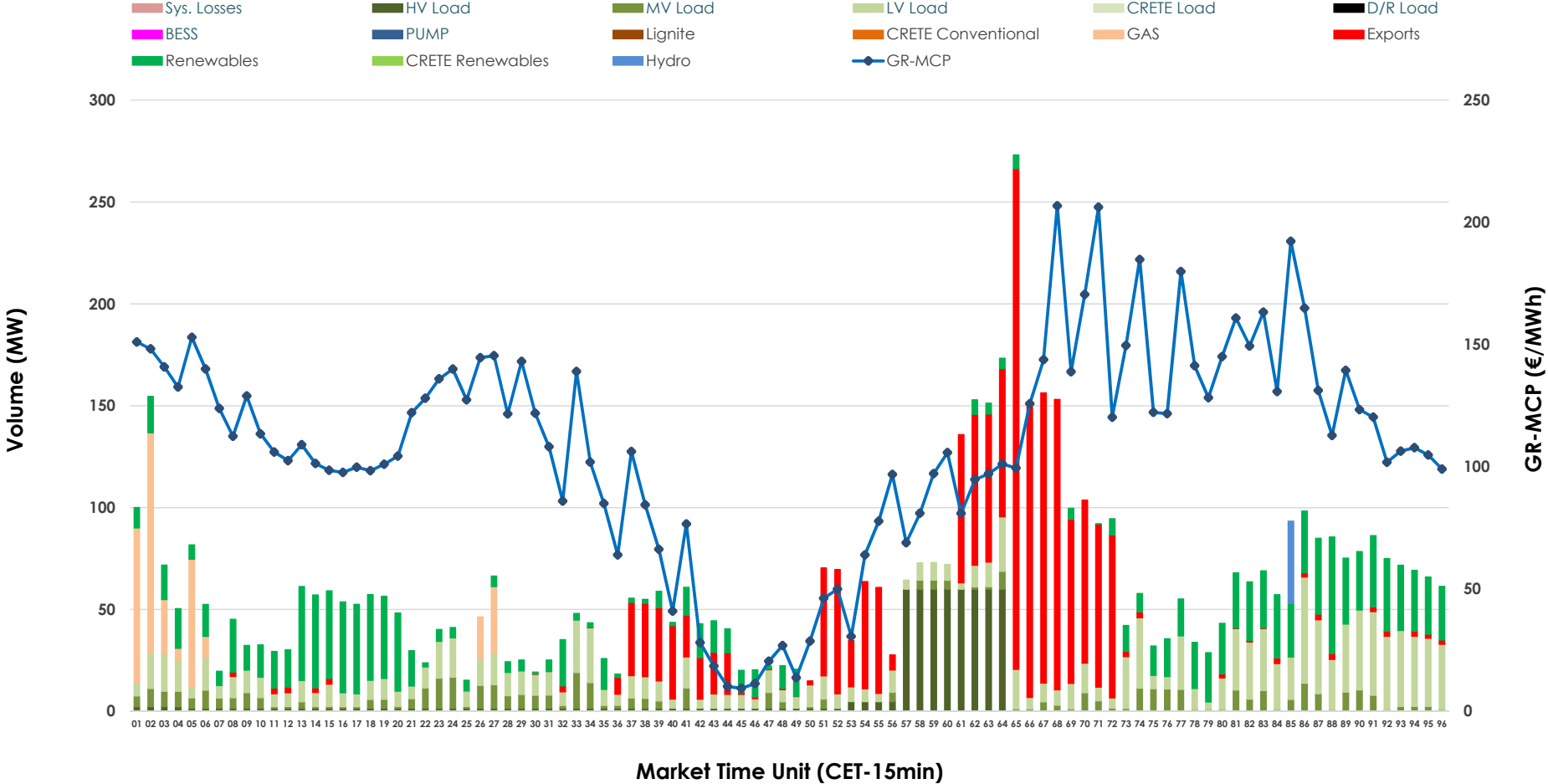


IDA '1' Market Outlook

24.03.2026 IDA '1' Market - Sell



24.03.2026 IDA '1' Market - Buy



GR Bidding Zone Weekly Figures

Delivery Day	18.03	19.03	20.03	21.03	22.03	23.03	24.03
	👇 -23%	👆 12%	👆 7%	👇 -13%	👇 -10%	👆 76%	👇 -26%
Avg.MCP (€/MWh)	89.03	99.89	107.18	93.13	83.38	146.60	108.40
Max.MCP (€/MWh)	160.11	216.29	246.73	167.26	192.93	279.92	206.78
Min.MCP (€/MWh)	1.56	4.00	13.00	-8.88	-11.08	62.90	9.41
		👆 192%	👇 -49%				👇 -26%
Tot.Vol(GWh)	N/M	2.63	7.69	3.90	N/M	4.08	3.04

Trades by Order Type

Delivery Day		18.03	19.03	20.03	21.03	22.03	23.03	24.03	
Ord Price Type		Sell & Buy Trades in (GWh) per Price Type							(%)
PPT	(S)	0.000	0.000	0.000	0.000	0.000	0.000	0.000	0.00%
HBD	(S)	0.000	1.168	3.581	1.854	0.000	1.492	1.145	75.39%
BLK	(S)	0.000	0.000	0.000	0.000	0.000	0.000	0.000	0.00%
CPL	(S)	0.000	0.148	0.263	0.097	0.000	0.546	0.374	24.61%
PPT	(B)	0.000	0.000	0.000	0.000	0.000	0.000	0.000	0.00%
HBD	(B)	0.000	1.146	3.175	1.790	0.000	1.585	1.063	70.03%
BLK	(B)	0.000	0.000	0.000	0.000	0.000	0.000	0.000	0.00%
CPL	(B)	0.000	0.170	0.669	0.161	0.000	0.453	0.455	29.97%
		Sell & Buy Orders Traded per Price Type							(%)
PPT	(S)	0	0	0	0	0	0	0	0.00%
HBD	(S)	291	216	269	102	208	219	267	100.00%
BLK	(S)	0	0	0	0	0	0	0	0.00%
PPT	(B)	0	0	0	0	0	0	0	0.00%
HBD	(B)	802	790	988	824	755	773	794	100.00%
BLK	(B)	0	0	0	0	0	0	0	0.00%

- MCP** Market Clearing Price (€/MWh)
- PPT** Priority Price-Taking
- HBD** Hybrid
- BLK** Block
- CPL** Market Coupling Flow

Trade's Volume Mix

		Sell - MWh	Buy - MWh	
Lignite	(0.0%)	0	0	(0.0%)
Crete Conv.	(0.0%)	0	0	(0.0%)
Gas	(31.5%)	478	86	(5.7%)
Hydro	(0.0%)	0	10	(0.7%)
Imports	(24.6%)	374		
RES	(9.2%)	140	362	(23.9%)
Crete RES	(0.0%)	0	0	(0.0%)
BESS	(0.0%)	0	0	(0.0%)
HV Load	(12.9%)	196	145	(9.6%)
MV Load	(11.6%)	176	113	(7.4%)
LV Load	(10.1%)	154	347	(22.9%)
Crete Load	(0.0%)	0	0	(0.0%)
Pumping	(0.0%)	0	0	(0.0%)
Exports			455	(30.0%)
Sys.Losses	(0.0%)	0	0	(0.0%)
D/R Load	(0.0%)	0	0	(0.0%)

