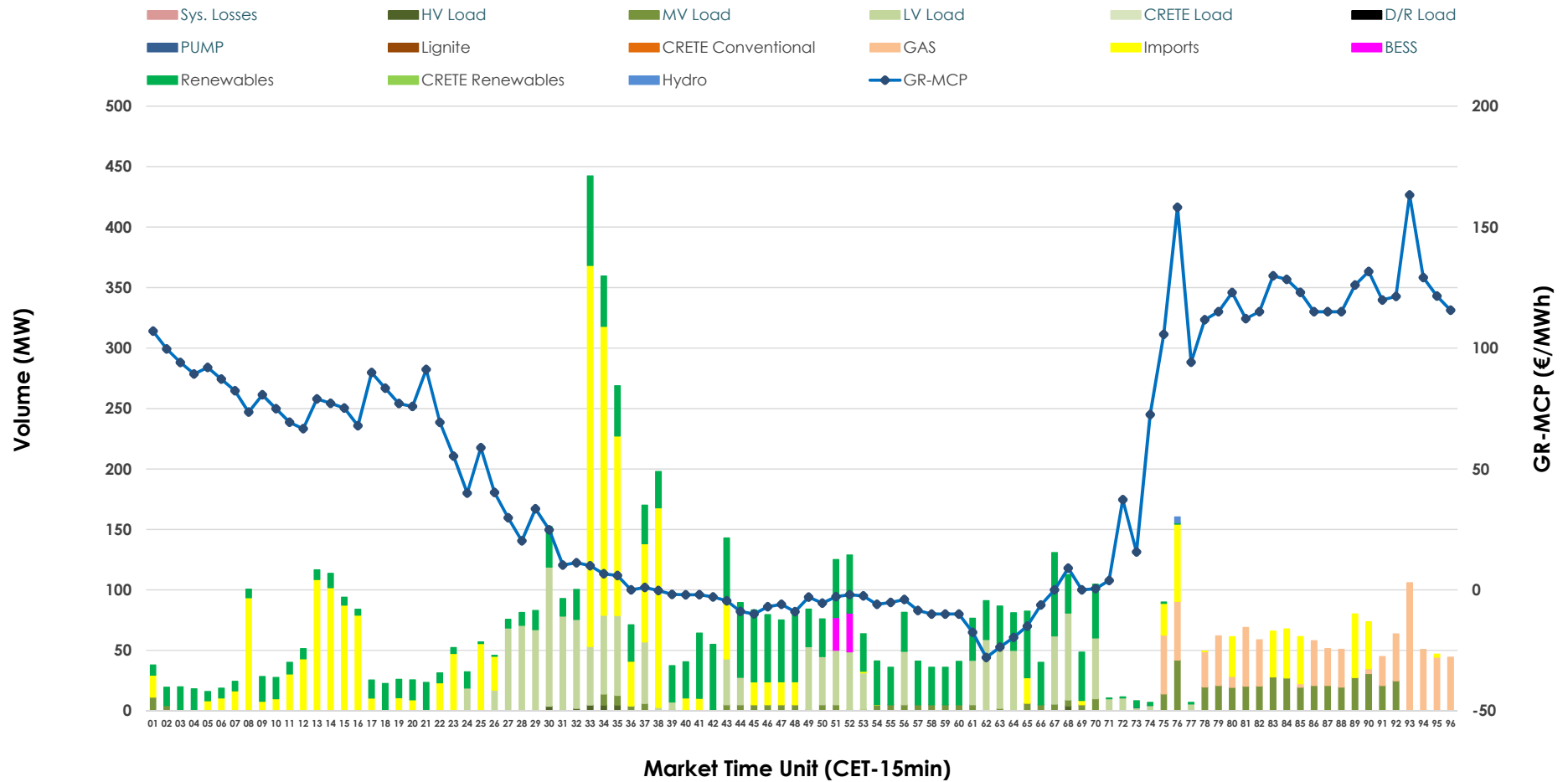


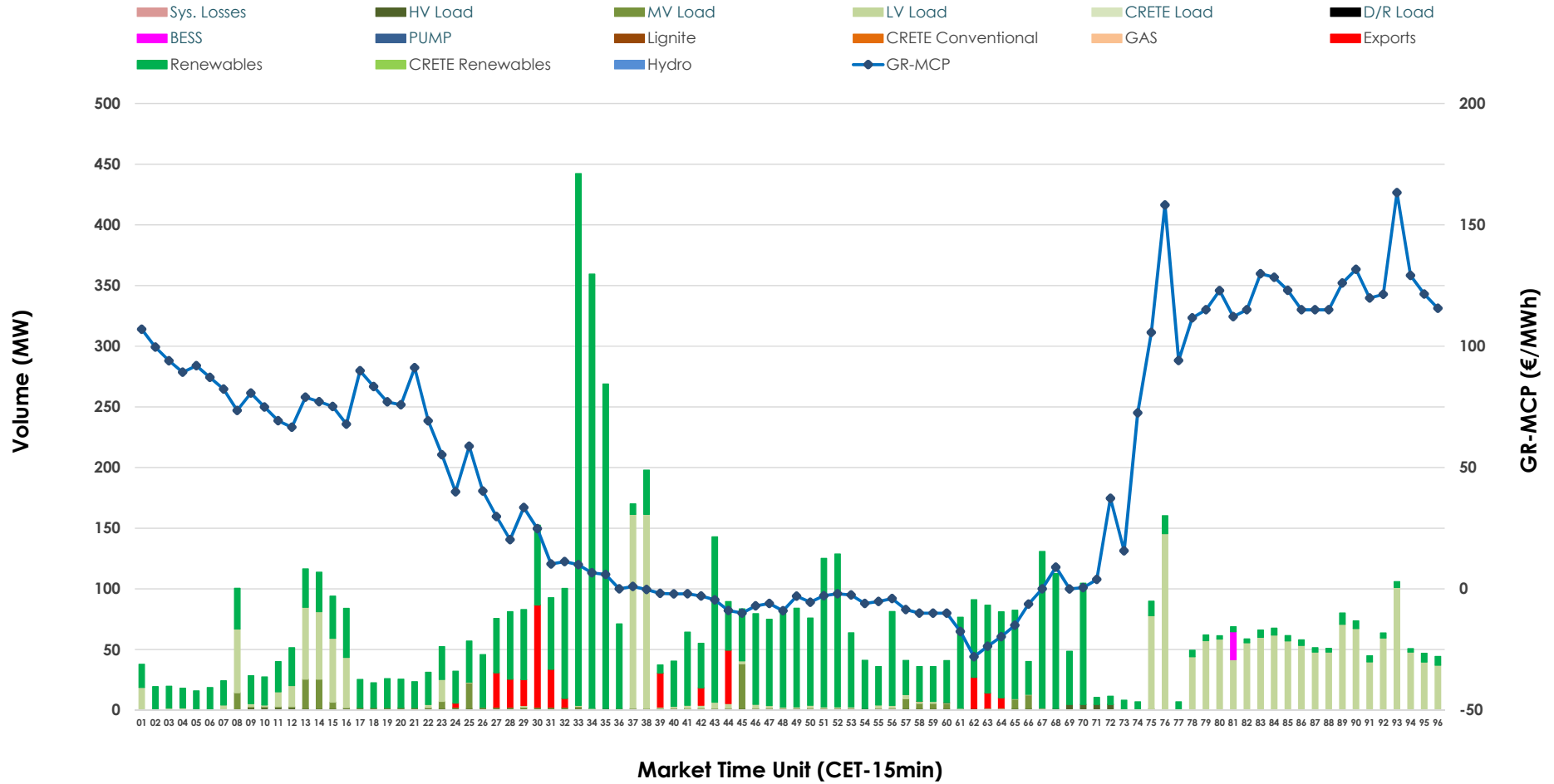


IDA '2' Market Outlook

13.06.2026 IDA '2' Market - Sell



13.06.2026 IDA '2' Market - Buy



GR Bidding Zone Weekly Figures

Delivery Day	07.06	08.06	09.06	10.06	11.06	12.06	13.06
	👇 -29%	👆 74%	👉 18%	👇 -9%	👇 -2%	👆 8%	👇 -56%
Avg.MCP (€/MWh)	56.96	99.05	116.65	106.30	104.28	112.76	49.42
Max.MCP (€/MWh)	148.74	189.62	225.37	197.85	162.31	172.17	163.27
Min.MCP (€/MWh)	-21.61	-1.00	-2.01	-5.84	25.13	65.03	-27.97
	👇 -33%	👉 -2%	👆 50%	👉 0%	👆 75%	👇 -35%	👇 -40%
Tot.Vol(GWh)	3.53	3.47	5.21	5.19	9.06	5.91	3.55

Trades by Order Type

Delivery Day		07.06	08.06	09.06	10.06	11.06	12.06	13.06	
Ord Price Type		Sell & Buy Trades in (GWh) per Price Type							(%)
PPT	(S)	0.000	0.000	0.000	0.000	0.000	0.000	0.000	0.00%
HBD	(S)	0.633	1.594	1.737	2.001	4.165	2.211	1.203	67.77%
BLK	(S)	0.000	0.000	0.000	0.000	0.000	0.000	0.000	0.00%
CPL	(S)	1.130	0.141	0.868	0.594	0.363	0.743	0.572	32.23%
PPT	(B)	0.000	0.000	0.000	0.000	0.000	0.000	0.000	0.00%
HBD	(B)	1.399	1.169	1.610	0.623	1.521	1.699	1.692	95.32%
BLK	(B)	0.000	0.000	0.000	0.000	0.000	0.000	0.000	0.00%
CPL	(B)	0.364	0.566	0.996	1.972	3.007	1.256	0.083	4.68%
		Sell & Buy Orders Traded per Price Type							(%)
PPT	(S)	0	0	0	0	0	0	0	0.00%
HBD	(S)	223	305	333	306	557	259	254	100.00%
BLK	(S)	0	0	0	0	0	0	0	0.00%
PPT	(B)	0	0	0	0	0	0	0	0.00%
HBD	(B)	539	448	428	344	505	425	356	100.00%
BLK	(B)	0	0	0	0	0	0	0	0.00%

- MCP** Market Clearing Price (€/MWh)
- PPT** Priority Price-Taking
- HBD** Hybrid
- BLK** Block
- CPL** Market Coupling Flow

Trade's Volume Mix

	Sell - MWh	Buy - MWh	
Lignite (0.0%)	0	0	(0.0%)
Crete Conv. (0.0%)	0	0	(0.0%)
Gas (9.5%)	169	0	(0.0%)
Hydro (0.1%)	1	0	(0.0%)
Imports (32.2%)	572		
RES (28.1%)	500	1,113	(62.7%)
Crete RES (0.0%)	0	0	(0.0%)
BESS (0.8%)	15	6	(0.3%)
HV Load (0.3%)	6	28	(1.6%)
MV Load (8.0%)	142	48	(2.7%)
LV Load (20.9%)	370	497	(28.0%)
Crete Load (0.0%)	0	0	(0.0%)
Pumping (0.0%)	0	0	(0.0%)
Exports		83	(4.7%)
Sys.Losses (0.0%)	0	0	(0.0%)
D/R Load (0.0%)	0	0	(0.0%)

