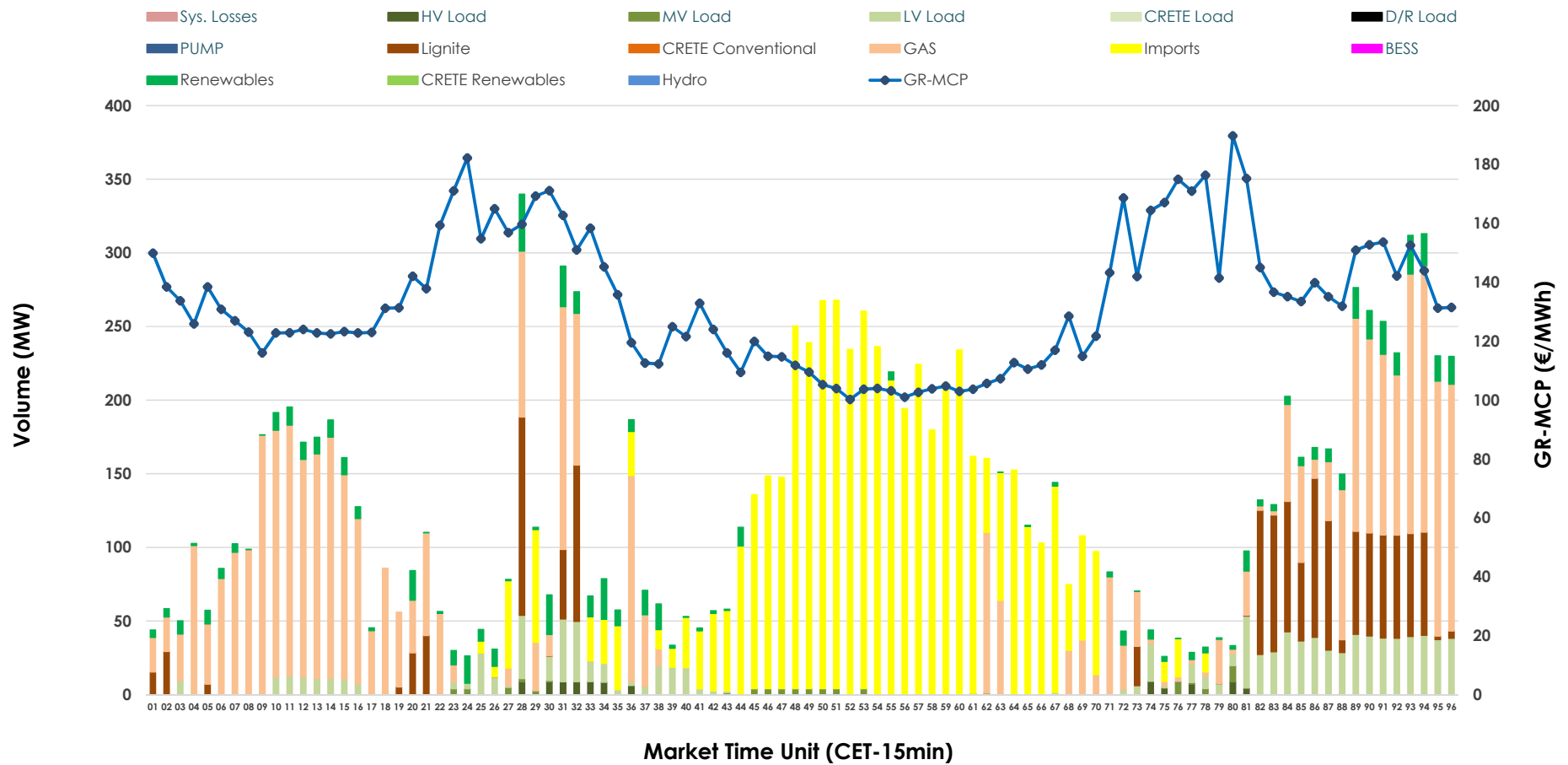


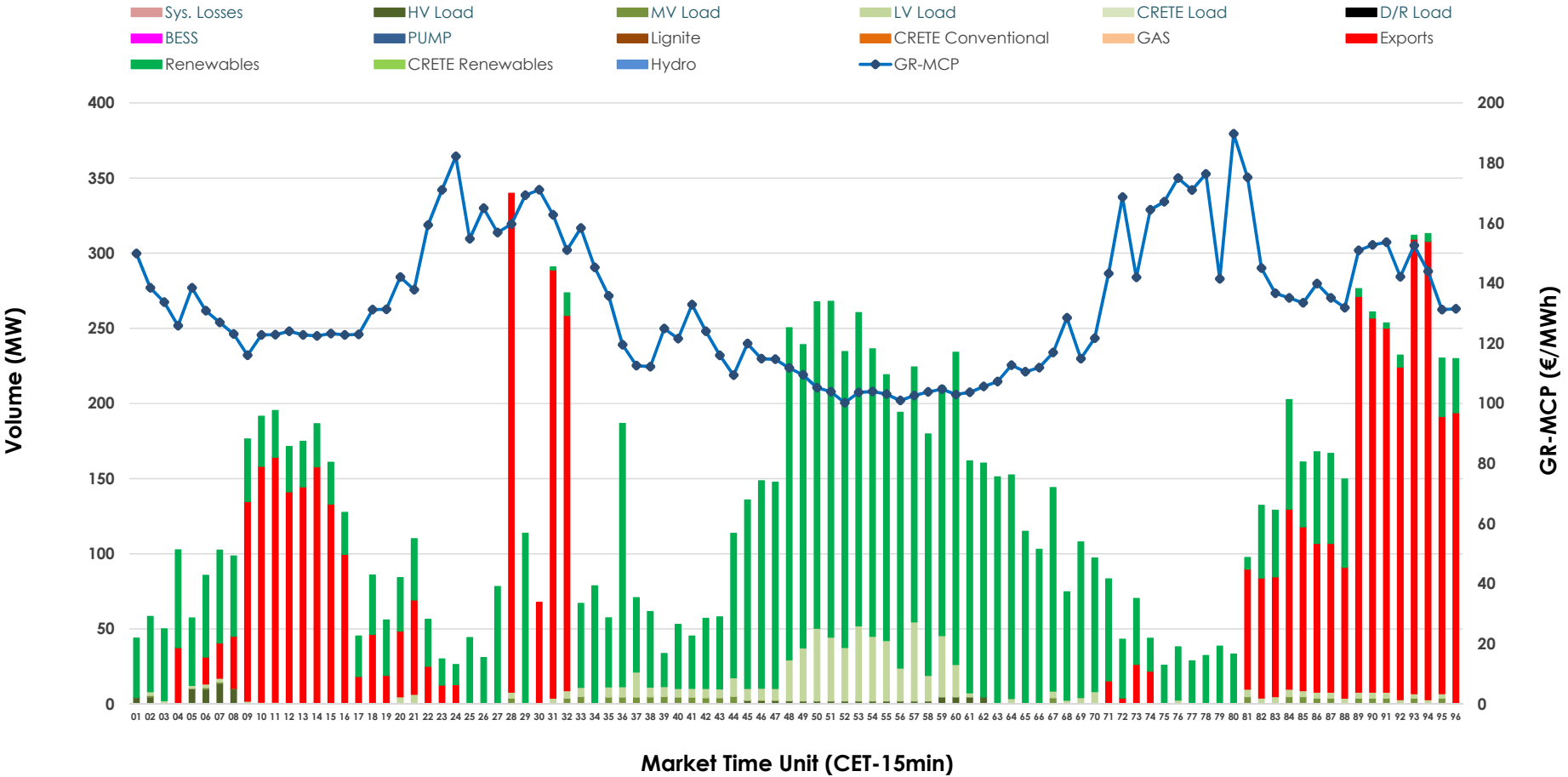


# IDA '2' Market Outlook

07.05.2026 IDA '2' Market - Sell



07.05.2026 IDA '2' Market - Buy



### GR Bidding Zone Weekly Figures

Delivery Day	01.05	02.05	03.05	04.05	05.05	06.05	07.05
	👇 -32%	👈 13%	👈 8%	👈 47%	👈 2%	👈 0%	👈 24%
<b>Avg.MCP (€/MWh)</b>	58.74	66.43	71.66	105.41	107.48	107.56	133.29
<b>Max.MCP (€/MWh)</b>	118.93	168.12	187.97	304.04	277.05	202.53	189.73
<b>Min.MCP (€/MWh)</b>	-12.00	-20.00	-20.00	-15.01	-11.79	-8.32	100.24
	👇 -18%	👈 46%	👇 -25%	👈 8%	👈 60%	👇 -51%	👈 63%
<b>Tot.Vol(GWh)</b>	4.27	6.22	4.66	5.04	8.08	4.00	6.53

### Trades by Order Type

Delivery Day	01.05	02.05	03.05	04.05	05.05	06.05	07.05	
<b>Ord Price Type</b>	<b>Sell &amp; Buy Trades in (GWh) per Price Type</b>							<b>(%)</b>
<b>PPT (S)</b>	0.000	0.000	0.000	0.000	0.000	0.000	0.000	0.00%
<b>HBD (S)</b>	1.781	2.831	1.733	1.725	1.827	1.897	2.001	61.24%
<b>BLK (S)</b>	0.000	0.000	0.000	0.000	0.000	0.000	0.000	0.00%
<b>CPL (S)</b>	0.352	0.277	0.599	0.793	2.212	0.102	1.266	38.76%
<b>PPT (B)</b>	0.000	0.000	0.000	0.000	0.000	0.000	0.000	0.00%
<b>HBD (B)</b>	1.235	1.727	2.200	2.371	4.034	1.120	1.968	60.23%
<b>BLK (B)</b>	0.000	0.000	0.000	0.000	0.000	0.000	0.000	0.00%
<b>CPL (B)</b>	0.898	1.381	0.132	0.147	0.005	0.878	1.300	39.77%
<b>Ord Price Type</b>	<b>Sell &amp; Buy Orders Traded per Price Type</b>							<b>(%)</b>
<b>PPT (S)</b>	0	0	0	0	0	0	0	0.00%
<b>HBD (S)</b>	525	429	305	322	409	223	283	100.00%
<b>BLK (S)</b>	0	0	0	0	0	0	0	0.00%
<b>PPT (B)</b>	0	0	0	0	0	0	0	0.00%
<b>HBD (B)</b>	344	395	466	562	374	345	454	100.00%
<b>BLK (B)</b>	0	0	0	0	0	0	0	0.00%

- MCP** Market Clearing Price (€/MWh)
- PPT** Priority Price-Taking
- HBD** Hybrid
- BLK** Block
- CPL** Market Coupling Flow

### Trade's Volume Mix

	Sell - MWh	Buy - MWh	
<b>Lignite (10.8%)</b>	351	0	(0.0%)
<b>Crete Conv. (0.0%)</b>	0	0	(0.0%)
<b>Gas (35.9%)</b>	1,173	0	(0.0%)
<b>Hydro (0.0%)</b>	0	0	(0.0%)
<b>Imports (38.8%)</b>	1,266		
<b>RES (5.2%)</b>	171	1,735	(53.1%)
<b>Crete RES (0.0%)</b>	0	0	(0.0%)
<b>BESS (0.0%)</b>	0	0	(0.0%)
<b>HV Load (0.7%)</b>	23	26	(0.8%)
<b>MV Load (0.6%)</b>	20	28	(0.9%)
<b>LV Load (8.0%)</b>	263	180	(5.5%)
<b>Crete Load (0.0%)</b>	0	0	(0.0%)
<b>Pumping (0.0%)</b>	0	0	(0.0%)
<b>Exports</b>		1,300	(39.8%)
<b>Sys.Losses (0.0%)</b>	0	0	(0.0%)
<b>D/R Load (0.0%)</b>	0	0	(0.0%)

