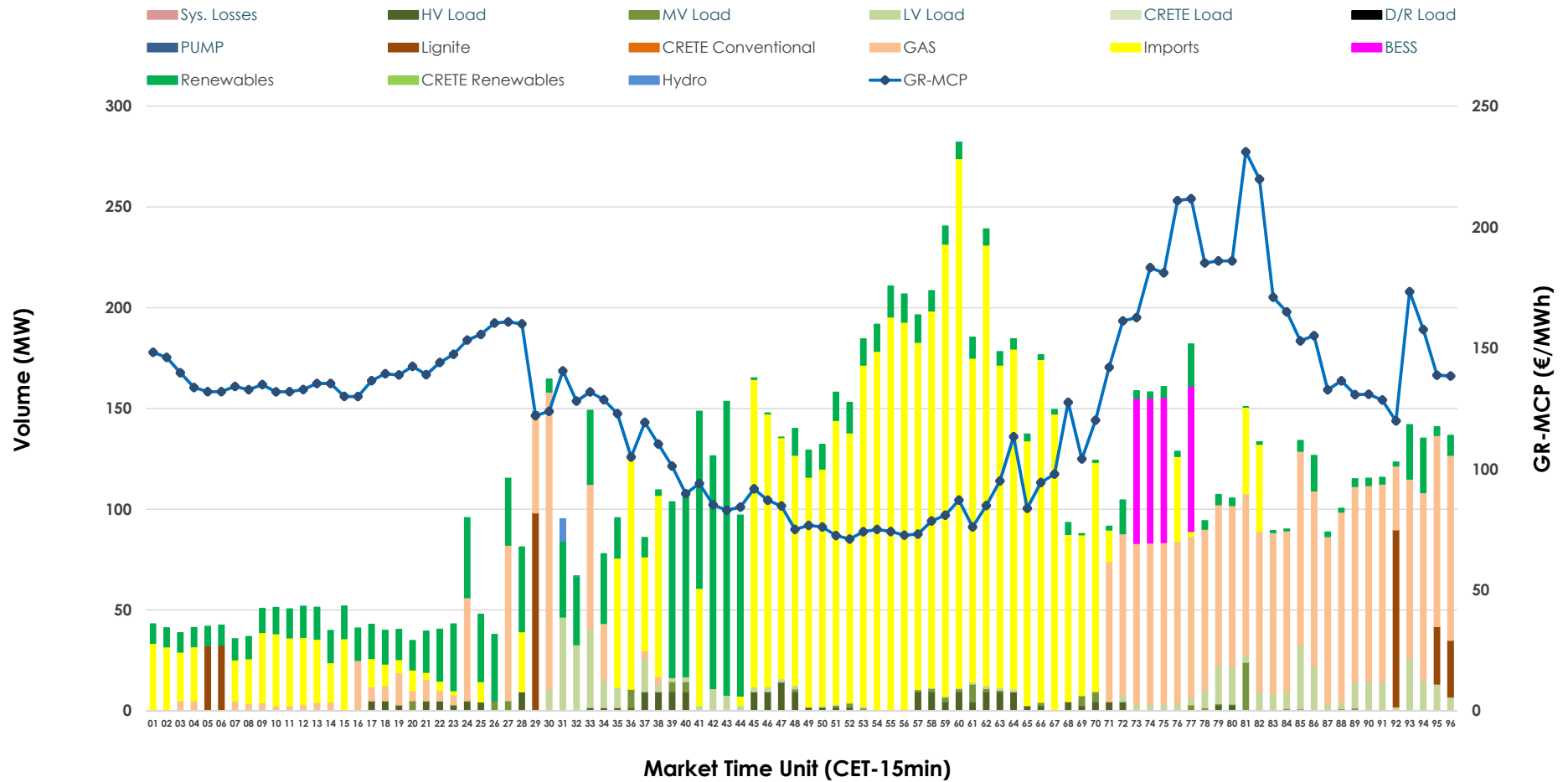


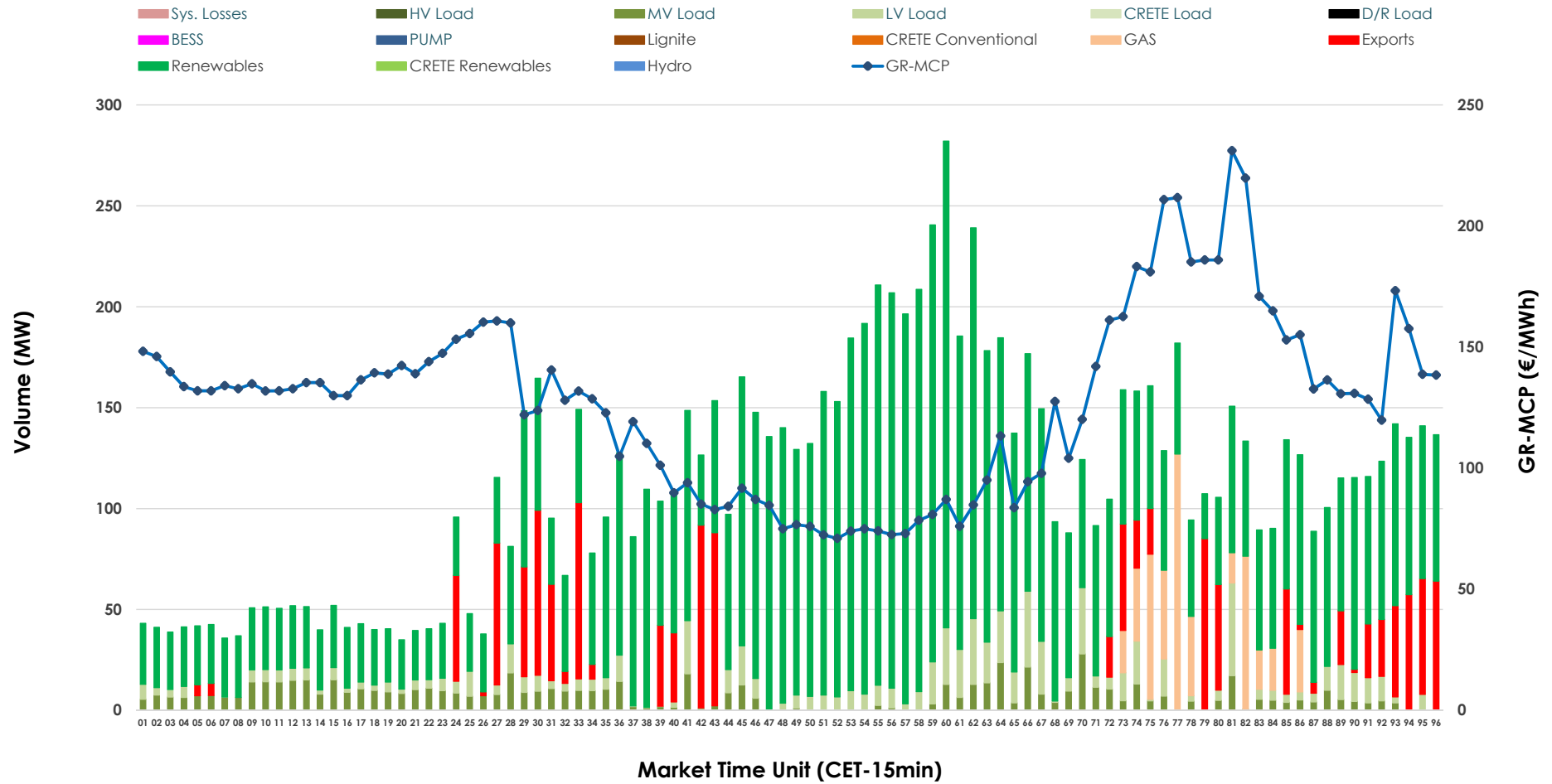


IDA '2' Market Outlook

19.05.2026 IDA '2' Market - Sell



19.05.2026 IDA '2' Market - Buy



GR Bidding Zone Weekly Figures

Delivery Day	13.05	14.05	15.05	16.05	17.05	18.05	19.05
	↗ 16%	→ 0%	↘ -3%	↘ -10%	↘ -12%	↑ 36%	↗ 29%
Avg.MCP (€/MWh)	95.03	94.61	91.42	82.13	72.35	98.59	127.58
Max.MCP (€/MWh)	189.00	232.85	167.09	133.13	155.79	281.79	231.13
Min.MCP (€/MWh)	-11.80	-8.88	-10.00	10.02	-10.01	-8.32	71.02
	↘ -7%	↘ -5%	↘ -7%	↘ -23%	↗ 25%	↑ 57%	↘ -11%
Tot.Vol(GWh)	4.64	4.40	4.07	3.11	3.90	6.11	5.45

Trades by Order Type

Delivery Day		13.05	14.05	15.05	16.05	17.05	18.05	19.05	
Ord Price Type		Sell & Buy Trades in (GWh) per Price Type							(%)
PPT	(S)	0.000	0.000	0.000	0.000	0.000	0.000	0.000	0.00%
HBD	(S)	1.576	1.666	1.801	1.365	0.900	2.778	1.464	53.72%
BLK	(S)	0.000	0.000	0.000	0.000	0.000	0.000	0.000	0.00%
CPL	(S)	0.743	0.535	0.234	0.192	1.052	0.276	1.261	46.28%
PPT	(B)	0.000	0.000	0.000	0.000	0.000	0.000	0.000	0.00%
HBD	(B)	2.095	1.709	1.718	0.907	1.861	2.994	2.401	88.12%
BLK	(B)	0.000	0.000	0.000	0.000	0.000	0.000	0.000	0.00%
CPL	(B)	0.224	0.491	0.317	0.650	0.091	0.061	0.324	11.88%
		Sell & Buy Orders Traded per Price Type							(%)
PPT	(S)	0	0	0	0	0	0	0	0.00%
HBD	(S)	270	284	268	336	353	482	350	100.00%
BLK	(S)	0	0	0	0	0	0	0	0.00%
PPT	(B)	0	0	0	0	0	0	0	0.00%
HBD	(B)	469	353	517	271	647	1212	662	100.00%
BLK	(B)	0	0	0	0	0	0	0	0.00%

- MCP** Market Clearing Price (€/MWh)
- PPT** Priority Price-Taking
- HBD** Hybrid
- BLK** Block
- CPL** Market Coupling Flow

Trade's Volume Mix

	Sell - MWh	Buy - MWh	
Lignite (2.8%)	77	0	(0.0%)
Crete Conv. (0.0%)	0	0	(0.0%)
Gas (24.9%)	679	125	(4.6%)
Hydro (0.1%)	3	0	(0.0%)
Imports (46.3%)	1,261		
RES (15.7%)	428	1,894	(69.5%)
Crete RES (0.0%)	0	0	(0.0%)
BESS (2.6%)	72	0	(0.0%)
HV Load (2.2%)	59	0	(0.0%)
MV Load (1.0%)	26	176	(6.5%)
LV Load (4.4%)	120	206	(7.5%)
Crete Load (0.0%)	0	0	(0.0%)
Pumping (0.0%)	0	0	(0.0%)
Exports		324	(11.9%)
Sys.Losses (0.0%)	0	0	(0.0%)
D/R Load (0.0%)	0	0	(0.0%)

