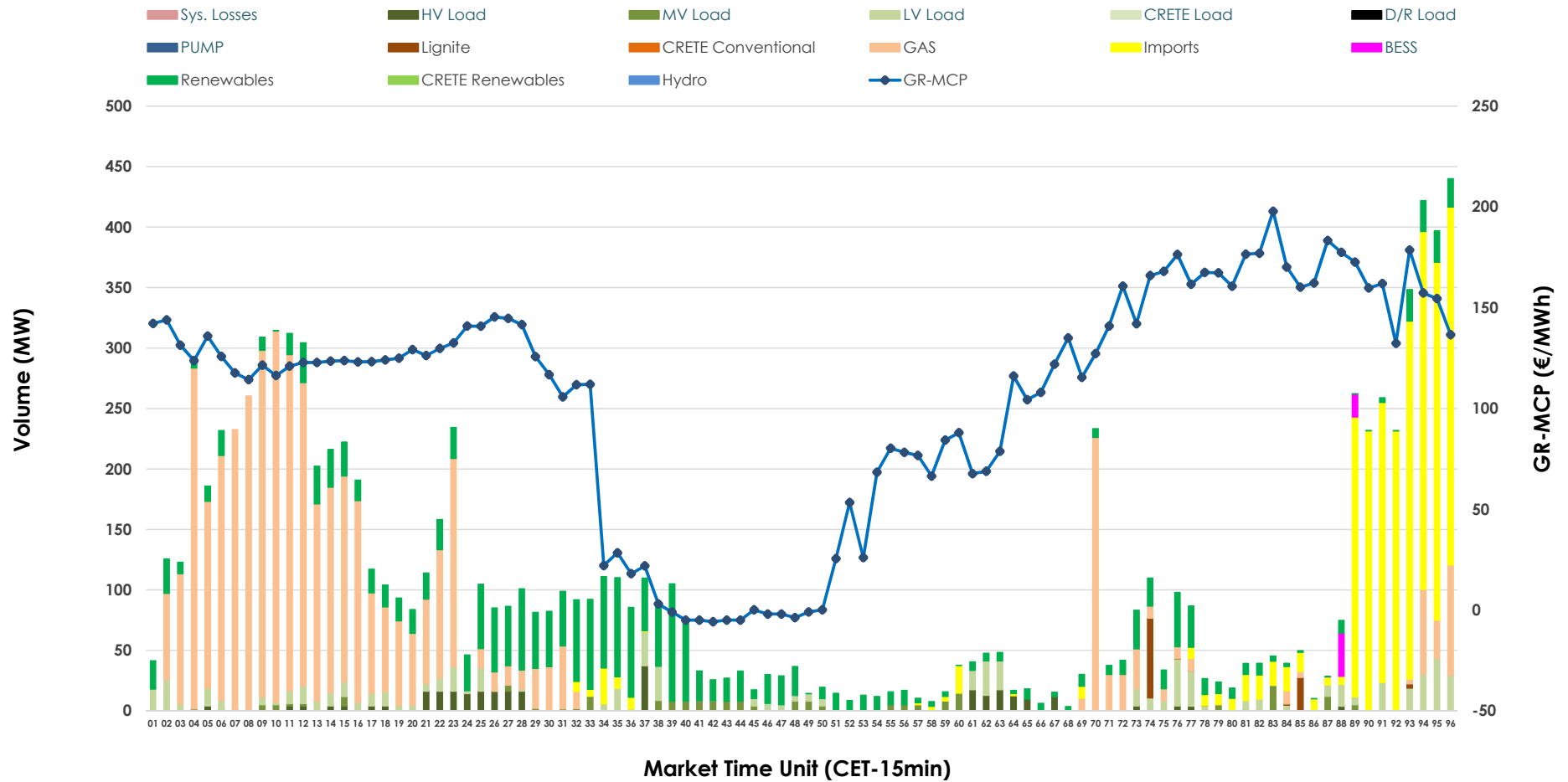


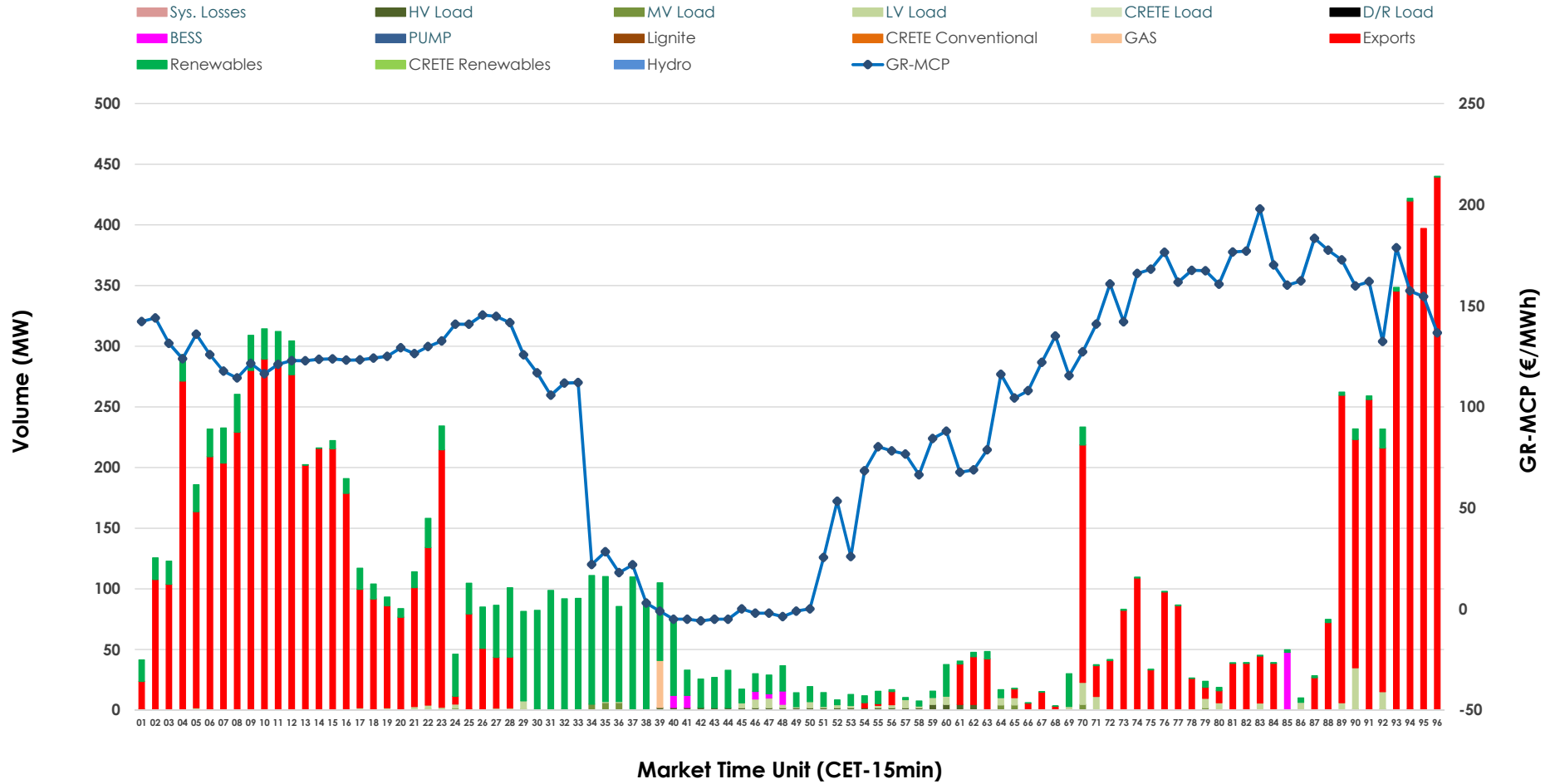


IDA '2' Market Outlook

10.06.2026 IDA '2' Market - Sell



10.06.2026 IDA '2' Market - Buy



GR Bidding Zone Weekly Figures

Delivery Day	04.06	05.06	06.06	07.06	08.06	09.06	10.06
	↗ 2%	↗ 26%	↘ -28%	↘ -29%	↗ 74%	↗ 18%	↘ -9%
Avg.MCP (€/MWh)	88.19	111.27	80.15	56.96	99.05	116.65	106.30
Max.MCP (€/MWh)	210.77	181.27	152.78	148.74	189.62	225.37	197.85
Min.MCP (€/MWh)	0.00	30.63	-10.82	-21.61	-1.00	-2.01	-5.84
	↗ 13%	↘ -9%	↗ 74%	↘ -33%	↘ -2%	↗ 50%	↗ 0%
Tot.Vol(GWh)	3.33	3.03	5.28	3.53	3.47	5.21	5.19

Trades by Order Type

Delivery Day		04.06	05.06	06.06	07.06	08.06	09.06	10.06	
Ord Price Type		Sell & Buy Trades in (GWh) per Price Type							(%)
PPT	(S)	0.000	0.000	0.000	0.000	0.000	0.000	0.000	0.00%
HBD	(S)	0.958	0.948	1.595	0.633	1.594	1.737	2.001	77.12%
BLK	(S)	0.000	0.000	0.000	0.000	0.000	0.000	0.000	0.00%
CPL	(S)	0.707	0.570	1.045	1.130	0.141	0.868	0.594	22.88%
PPT	(B)	0.000	0.000	0.000	0.000	0.000	0.000	0.000	0.00%
HBD	(B)	1.332	1.114	2.207	1.399	1.169	1.610	0.623	24.00%
BLK	(B)	0.000	0.000	0.000	0.000	0.000	0.000	0.000	0.00%
CPL	(B)	0.333	0.404	0.434	0.364	0.566	0.996	1.972	76.00%
		Sell & Buy Orders Traded per Price Type							(%)
PPT	(S)	0	0	0	0	0	0	0	0.00%
HBD	(S)	210	232	393	223	305	333	306	100.00%
BLK	(S)	0	0	0	0	0	0	0	0.00%
PPT	(B)	0	0	0	0	0	0	0	0.00%
HBD	(B)	380	483	655	539	448	428	344	100.00%
BLK	(B)	0	0	0	0	0	0	0	0.00%

- MCP** Market Clearing Price (€/MWh)
- PPT** Priority Price-Taking
- HBD** Hybrid
- BLK** Block
- CPL** Market Coupling Flow

Trade's Volume Mix

	Sell - MWh	Buy - MWh	
Lignite (0.9%)	25	0	(0.0%)
Crete Conv. (0.0%)	0	0	(0.0%)
Gas (43.5%)	1,129	10	(0.4%)
Hydro (0.0%)	0	0	(0.0%)
Imports (22.9%)	594		
RES (20.3%)	527	508	(19.6%)
Crete RES (0.0%)	0	0	(0.0%)
BESS (0.5%)	14	22	(0.8%)
HV Load (2.8%)	73	16	(0.6%)
MV Load (2.0%)	53	14	(0.5%)
LV Load (7.0%)	181	53	(2.1%)
Crete Load (0.0%)	0	0	(0.0%)
Pumping (0.0%)	0	0	(0.0%)
Exports		1,972	(76.0%)
Sys.Losses (0.0%)	0	0	(0.0%)
D/R Load (0.0%)	0	0	(0.0%)

