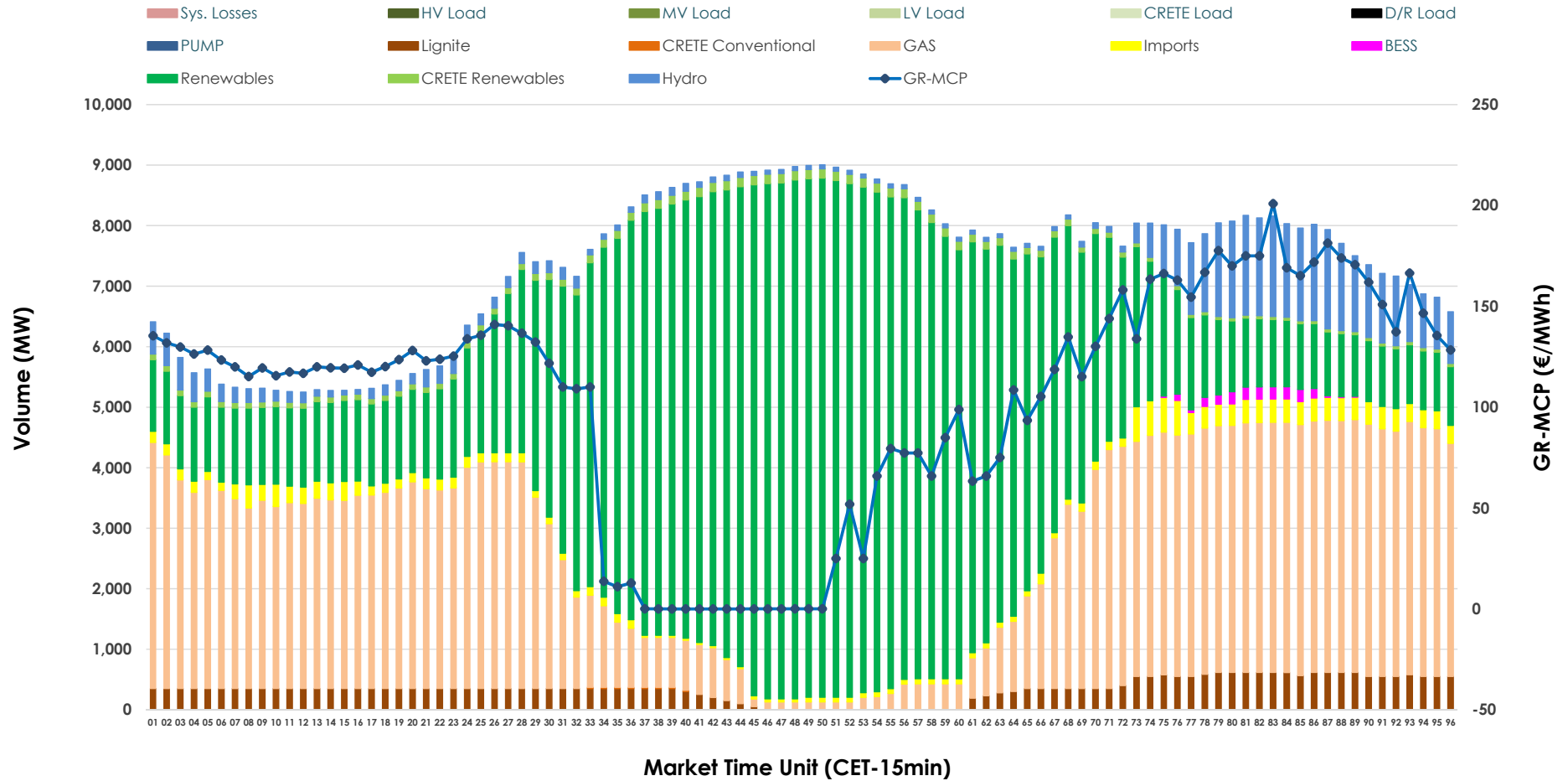


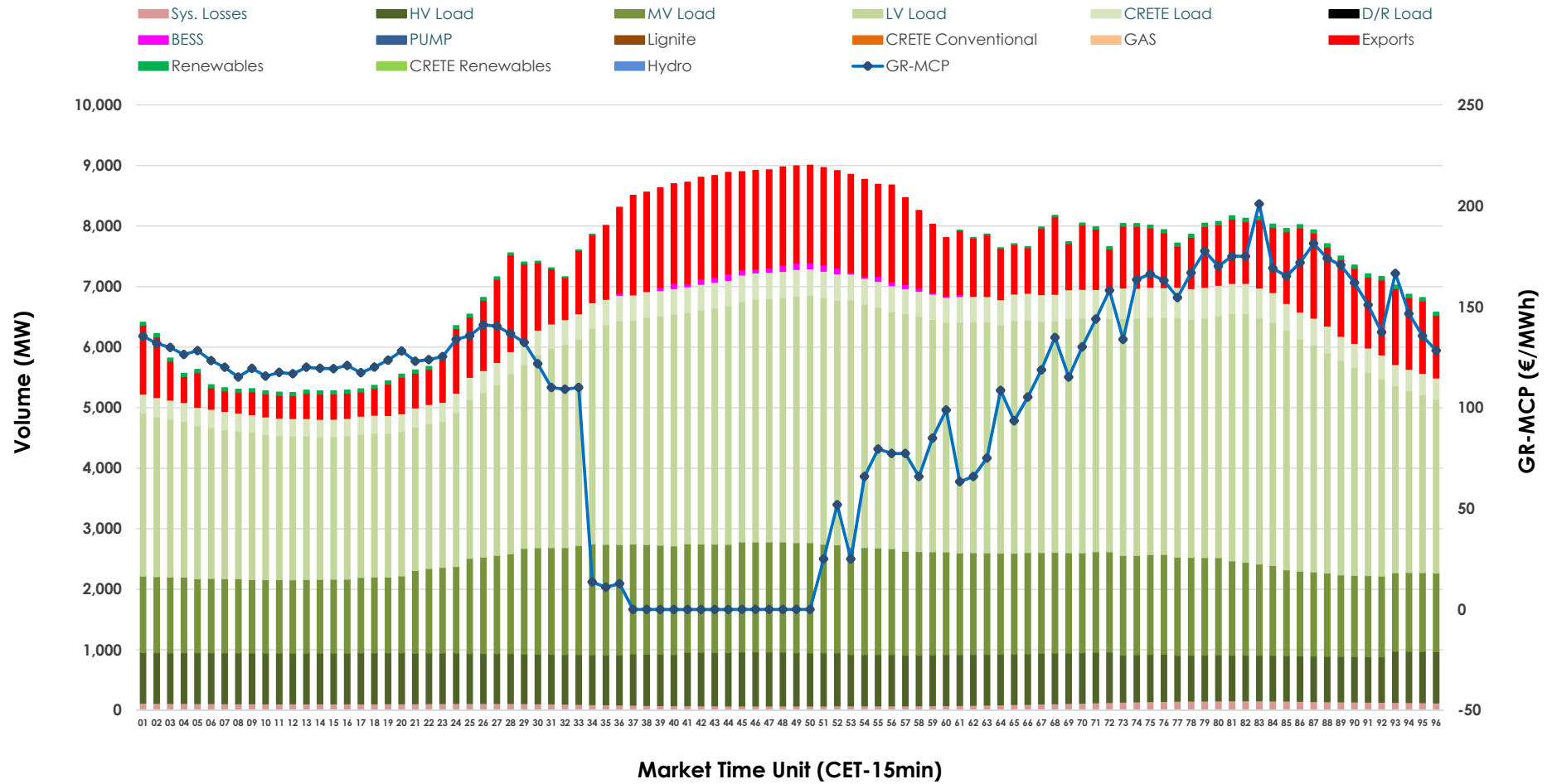


Day-Ahead Market Outlook

10.06.2026 Day-Ahead Market - Sell



10.06.2026 Day-Ahead Market - Buy



GR Bidding Zone Weekly Figures

Delivery Day	04.06	05.06	06.06	07.06	08.06	09.06	10.06
	↗ 6%	↗ 26%	↘ -29%	↘ -29%	↗ 65%	↗ 20%	↘ -9%
Avg.MCP (€/MWh)	91.05	114.69	81.97	57.86	95.42	114.46	104.15
Max.MCP (€/MWh)	210.77	182.76	156.59	144.30	198.86	221.03	200.90
Min.MCP (€/MWh)	5.44	18.59	0.00	-5.00	-0.01	-0.01	-0.01
	↘ -11%	↘ -2%	↘ -4%	↘ -9%	↗ 26%	↗ 3%	↘ -2%
Tot.Vol(GWh)	327.39	321.16	306.90	280.10	351.55	361.76	354.80

Trades by Order Type

Delivery Day		04.06	05.06	06.06	07.06	08.06	09.06	10.06	
Ord Price Type		Sell & Buy Trades in (GWh) per Price Type							(%)
PPT	(S)	64.441	58.338	56.563	59.103	72.630	65.539	61.558	34.70%
HBD	(S)	66.852	70.853	63.063	47.065	72.260	79.650	77.318	43.58%
BLK	(S)	29.365	28.875	30.143	21.989	30.502	33.822	37.882	21.35%
CPL	(S)	3.038	2.516	3.683	11.896	0.382	1.870	0.639	0.36%
PPT	(B)	16.151	15.503	15.317	16.008	16.525	15.928	16.475	9.29%
HBD	(B)	141.396	136.467	128.886	123.201	142.899	146.848	145.565	82.06%
BLK	(B)	0.000	0.000	0.000	0.000	0.000	0.000	0.000	0.00%
CPL	(B)	6.148	8.612	9.249	0.843	16.351	18.105	15.358	8.66%
		Sell & Buy Orders Traded per Price Type							(%)
PPT	(S)	1703	1718	1725	1683	1794	1689	1649	31.01%
HBD	(S)	3595	3574	3457	2774	3328	3724	3651	68.67%
BLK	(S)	13	11	13	10	14	18	17	0.32%
PPT	(B)	2413	2359	2329	2349	2408	2379	2333	36.84%
HBD	(B)	4066	3898	3900	3851	3616	3938	4000	63.16%
BLK	(B)	0	0	0	0	0	0	0	0.00%

- MCP** Market Clearing Price (€/MWh)
- PPT** Priority Price-Taking
- HBD** Hybrid
- BLK** Block
- CPL** Market Coupling Flow

Trade's Volume Mix

		Sell - MWh	Buy - MWh	
Lignite	(4.6%)	8,130	0	(0.0%)
Crete Conv.	(0.0%)	40	0	(0.0%)
Gas	(34.3%)	60,886	0	(0.0%)
Hydro	(5.6%)	10,002	0	(0.0%)
Imports	(2.7%)	4,759		
RES	(51.1%)	90,684	755	(0.4%)
Crete RES	(1.4%)	2,422	0	(0.0%)
BESS	(0.3%)	475	411	(0.2%)
HV Load	(0.0%)	0	19,795	(11.2%)
MV Load	(0.0%)	0	37,285	(21.0%)
LV Load	(0.0%)	0	81,400	(45.9%)
Crete Load	(0.0%)	0	9,617	(5.4%)
Pumping	(0.0%)	0	0	(0.0%)
Exports			25,489	(14.4%)
Sys.Losses	(0.0%)	0	2,645	(1.5%)
D/R Load	(0.0%)	0	0	(0.0%)

