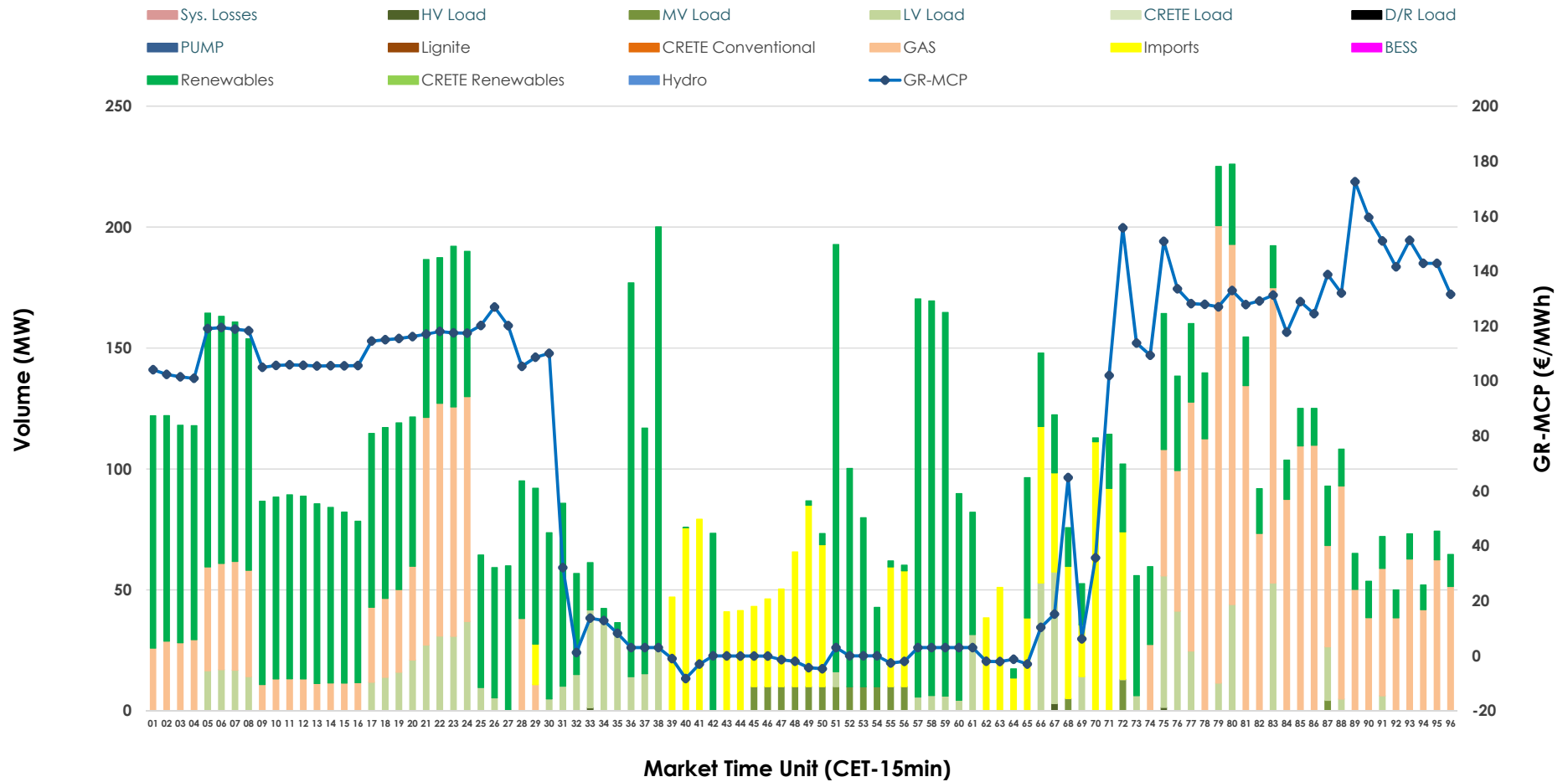


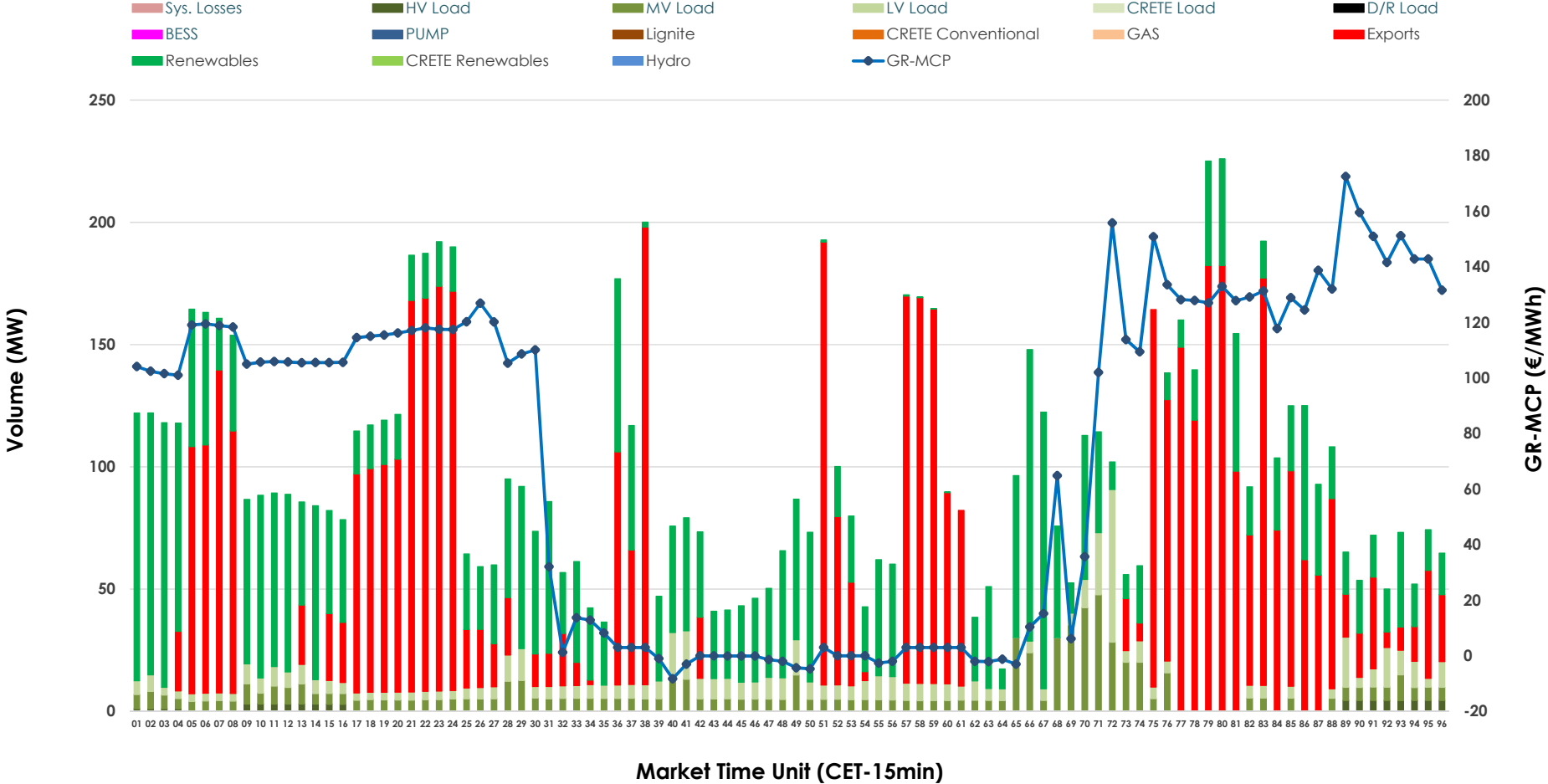


IDA '2' Market Outlook

25.05.2026 IDA '2' Market - Sell



25.05.2026 IDA '2' Market - Buy



GR Bidding Zone Weekly Figures

Delivery Day	19.05	20.05	21.05	22.05	23.05	24.05	25.05
	↗ 29%	↘ -46%	↗ 33%	↘ -2%	↘ -26%	↘ -6%	↗ 17%
Avg.MCP (€/MWh)	127.58	69.29	92.33	90.57	66.79	62.57	73.39
Max.MCP (€/MWh)	231.13	203.57	221.99	161.98	175.24	158.00	172.51
Min.MCP (€/MWh)	71.02	-9.37	-10.26	-2.17	-2.04	-7.00	-8.25
	↘ -11%	↘ -6%	↘ -12%	↘ -6%	↗ 44%	↘ -39%	↗ 31%
Tot.Vol(GWh)	5.45	5.14	4.55	4.28	6.16	3.73	4.89

Trades by Order Type

Delivery Day		19.05	20.05	21.05	22.05	23.05	24.05	25.05	
Ord Price Type		Sell & Buy Trades in (GWh) per Price Type							(%)
PPT	(S)	0.000	0.000	0.000	0.000	0.000	0.000	0.000	0.00%
HBD	(S)	1.464	2.483	1.964	1.614	2.467	1.137	2.126	86.87%
BLK	(S)	0.000	0.000	0.000	0.000	0.000	0.000	0.000	0.00%
CPL	(S)	1.261	0.086	0.309	0.527	0.613	0.730	0.321	13.13%
PPT	(B)	0.000	0.000	0.000	0.000	0.000	0.000	0.000	0.00%
HBD	(B)	2.401	1.762	1.744	1.739	2.289	1.729	1.255	51.30%
BLK	(B)	0.000	0.000	0.000	0.000	0.000	0.000	0.000	0.00%
CPL	(B)	0.324	0.807	0.529	0.402	0.791	0.138	1.192	48.70%
		Sell & Buy Orders Traded per Price Type							(%)
PPT	(S)	0	0	0	0	0	0	0	0.00%
HBD	(S)	350	332	268	311	226	176	303	100.00%
BLK	(S)	0	0	0	0	0	0	0	0.00%
PPT	(B)	0	0	0	0	0	0	0	0.00%
HBD	(B)	662	544	413	417	543	406	632	100.00%
BLK	(B)	0	0	0	0	0	0	0	0.00%

- MCP** Market Clearing Price (€/MWh)
- PPT** Priority Price-Taking
- HBD** Hybrid
- BLK** Block
- CPL** Market Coupling Flow

Trade's Volume Mix

	Sell - MWh	Buy - MWh	
Lignite (0.0%)	0	0	(0.0%)
Crete Conv. (0.0%)	0	0	(0.0%)
Gas (28.7%)	701	0	(0.0%)
Hydro (0.0%)	0	0	(0.0%)
Imports (13.1%)	321		
RES (47.4%)	1,159	890	(36.4%)
Crete RES (0.0%)	0	0	(0.0%)
BESS (0.0%)	0	0	(0.0%)
HV Load (0.1%)	1	16	(0.7%)
MV Load (1.5%)	36	185	(7.6%)
LV Load (9.3%)	228	164	(6.7%)
Crete Load (0.0%)	0	0	(0.0%)
Pumping (0.0%)	0	0	(0.0%)
Exports		1,192	(48.7%)
Sys.Losses (0.0%)	0	0	(0.0%)
D/R Load (0.0%)	0	0	(0.0%)

