

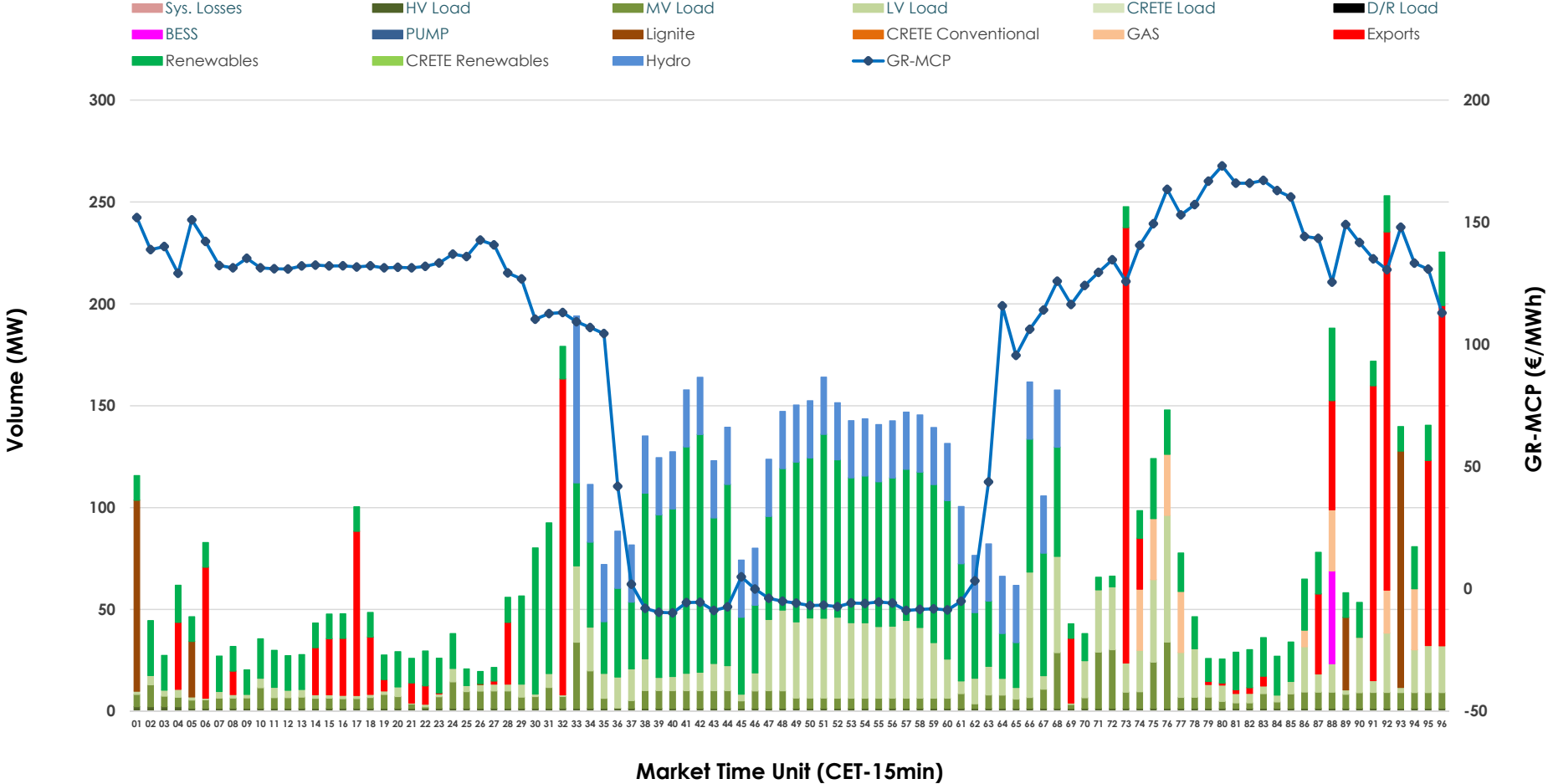


# IDA '1' Market Outlook

02.06.2026 IDA '1' Market - Sell



### 02.06.2026 IDA '1' Market - Buy



### GR Bidding Zone Weekly Figures

Delivery Day	27.05	28.05	29.05	30.05	31.05	01.06	02.06
	↗ 15%	↘ -5%	↘ -10%	↗ 9%	↘ -4%	↗ 13%	↘ -2%
<b>Avg.MCP (€/MWh)</b>	94.60	89.80	81.26	88.77	85.50	96.84	95.04
<b>Max.MCP (€/MWh)</b>	277.17	198.13	166.41	210.27	159.21	184.62	173.10
<b>Min.MCP (€/MWh)</b>	-7.68	-5.86	-8.93	-9.10	-2.01	-5.61	-9.72
	↘ -15%	↗ 98%	↗ 6%	↘ -25%	↗ 22%	↘ -4%	↘ -27%
<b>Tot.Vol(GWh)</b>	3.24	6.41	6.77	5.07	6.19	5.96	4.35

### Trades by Order Type

Delivery Day		27.05	28.05	29.05	30.05	31.05	01.06	02.06	
<b>Ord Price Type</b>		<b>Sell &amp; Buy Trades in (GWh) per Price Type</b>							<b>(%)</b>
<b>PPT</b>	(S)	0.000	0.000	0.000	0.000	0.000	0.000	0.000	0.00%
<b>HBD</b>	(S)	1.453	2.903	3.383	2.016	1.792	2.320	1.893	87.12%
<b>BLK</b>	(S)	0.000	0.000	0.000	0.000	0.000	0.000	0.000	0.00%
<b>CPL</b>	(S)	0.169	0.303	0.000	0.518	1.305	0.658	0.280	12.88%
<b>PPT</b>	(B)	0.000	0.000	0.000	0.000	0.000	0.000	0.000	0.00%
<b>HBD</b>	(B)	1.608	2.224	3.383	2.118	2.374	2.610	1.808	83.19%
<b>BLK</b>	(B)	0.000	0.000	0.000	0.000	0.000	0.000	0.000	0.00%
<b>CPL</b>	(B)	0.013	0.983	0.000	0.415	0.722	0.367	0.365	16.81%
		<b>Sell &amp; Buy Orders Traded per Price Type</b>							<b>(%)</b>
<b>PPT</b>	(S)	0	0	0	0	0	0	0	0.00%
<b>HBD</b>	(S)	306	371	267	305	243	201	123	100.00%
<b>BLK</b>	(S)	0	0	0	0	0	0	0	0.00%
<b>PPT</b>	(B)	0	0	0	0	0	0	0	0.00%
<b>HBD</b>	(B)	579	643	746	771	950	707	870	100.00%
<b>BLK</b>	(B)	0	0	0	0	0	0	0	0.00%

- MCP** Market Clearing Price (€/MWh)
- PPT** Priority Price-Taking
- HBD** Hybrid
- BLK** Block
- CPL** Market Coupling Flow

### Trade's Volume Mix

	Sell - MWh	Buy - MWh	
<b>Lignite</b> (4.0%)	87	68	(3.1%)
<b>Crete Conv.</b> (0.0%)	0	0	(0.0%)
<b>Gas</b> (22.5%)	489	52	(2.4%)
<b>Hydro</b> (0.0%)	0	266	(12.2%)
<b>Imports</b> (12.9%)	280		
<b>RES</b> (52.3%)	1,137	836	(38.5%)
<b>Crete RES</b> (0.0%)	0	0	(0.0%)
<b>BESS</b> (0.0%)	0	11	(0.5%)
<b>HV Load</b> (0.9%)	20	37	(1.7%)
<b>MV Load</b> (1.2%)	26	184	(8.5%)
<b>LV Load</b> (6.2%)	134	353	(16.3%)
<b>Crete Load</b> (0.0%)	0	0	(0.0%)
<b>Pumping</b> (0.0%)	0	0	(0.0%)
<b>Exports</b>		365	(16.8%)
<b>Sys.Losses</b> (0.0%)	0	0	(0.0%)
<b>D/R Load</b> (0.0%)	0	0	(0.0%)

