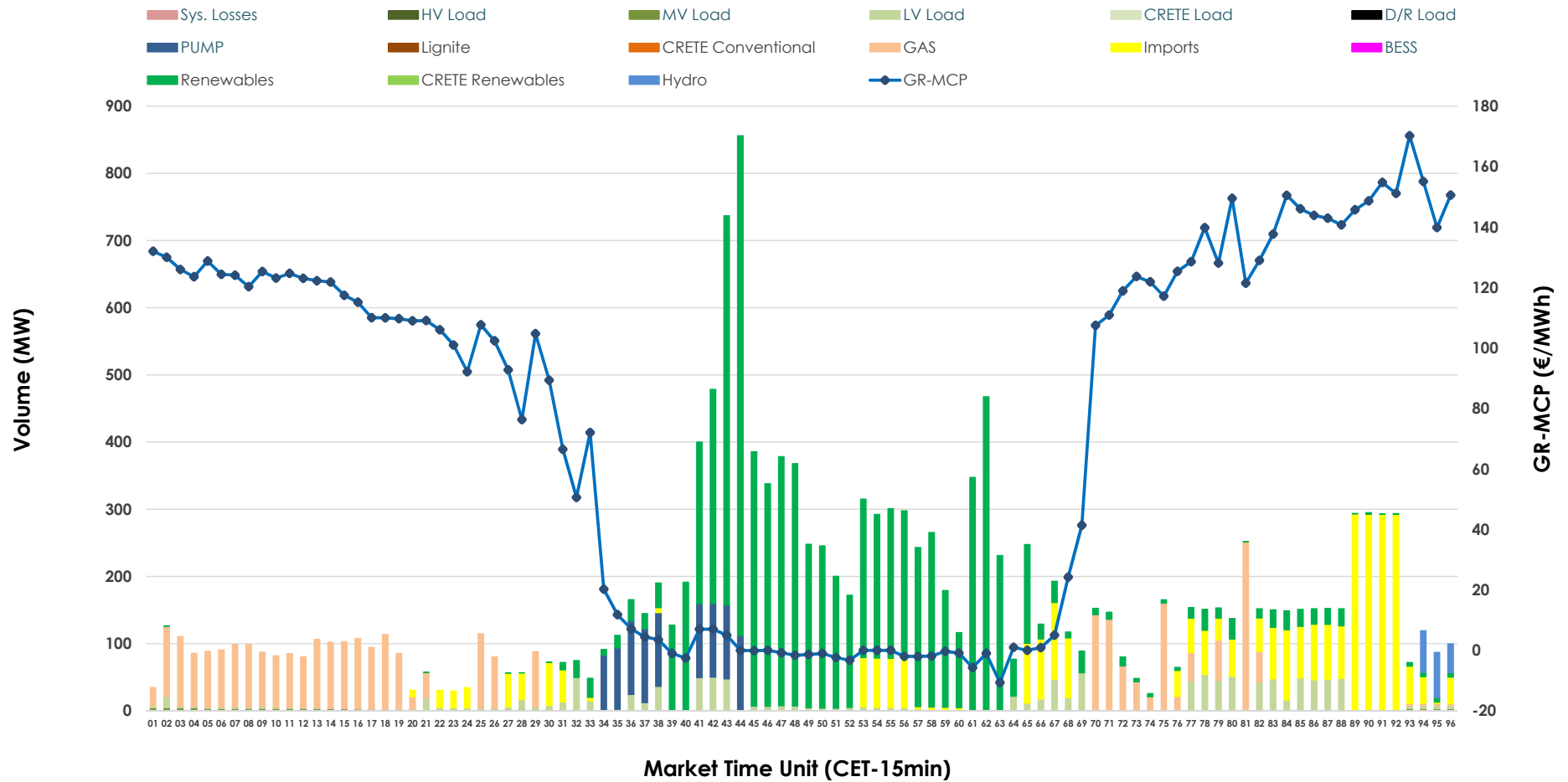


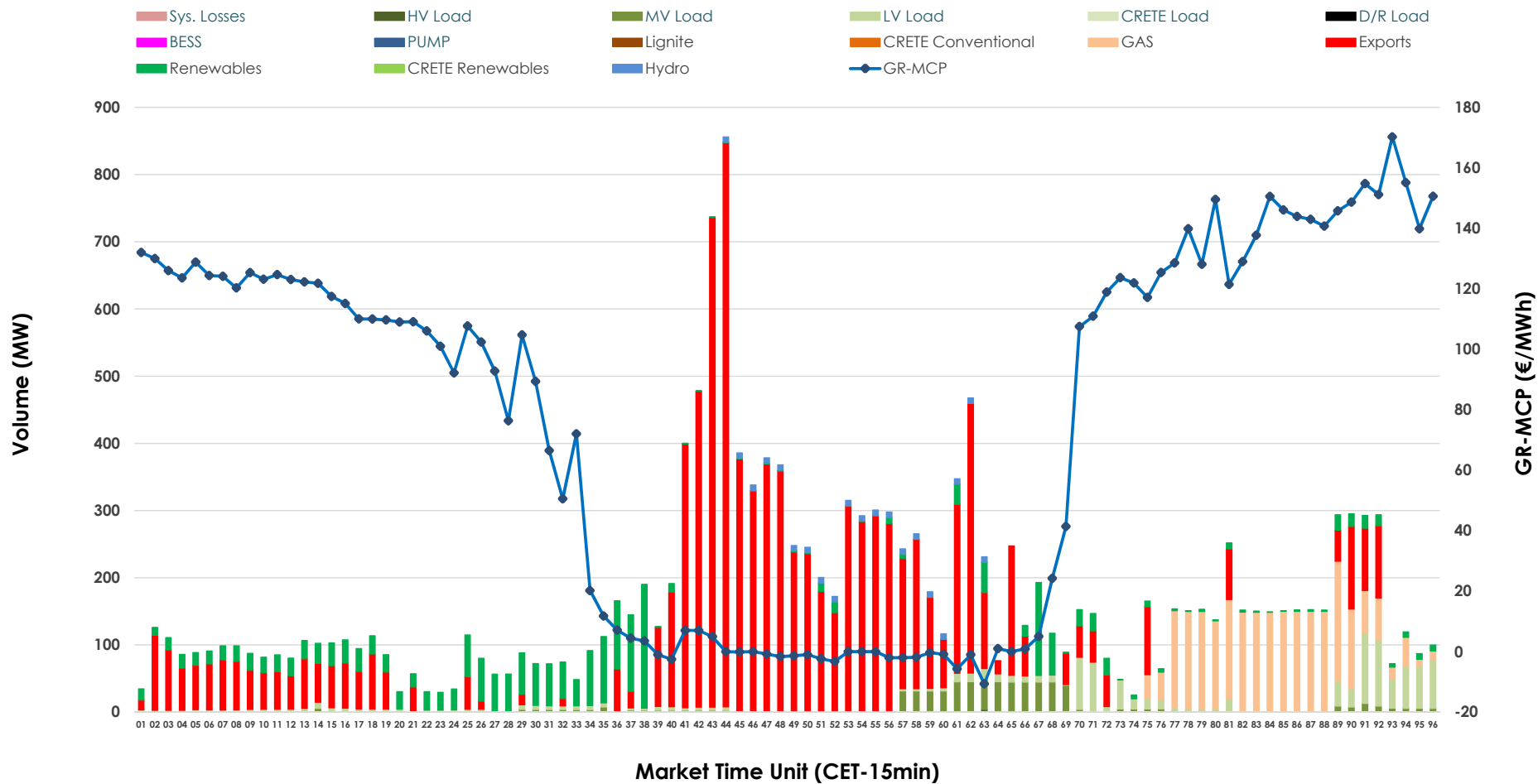


# IDA '1' Market Outlook

04.07.2026 IDA '1' Market - Sell



### 04.07.2026 IDA '1' Market - Buy



### GR Bidding Zone Weekly Figures

Delivery Day	28.06	29.06	30.06	01.07	02.07	03.07	04.07
	👇 -8%	👆 25%	👆 57%	👆 19%	👇 -15%	👇 -31%	👇 -22%
<b>Avg.MCP (€/MWh)</b>	72.03	90.14	141.44	168.85	142.91	98.80	76.99
<b>Max.MCP (€/MWh)</b>	153.50	280.03	533.79	391.22	302.27	166.44	170.22
<b>Min.MCP (€/MWh)</b>	-3.92	-6.62	-7.05	69.99	20.36	8.23	-10.67
	👆 106%	👇 -27%	👆 47%	👇 -10%	👇 -34%	👆 41%	👆 76%
<b>Tot.Vol(GWh)</b>	5.24	3.81	5.61	5.07	3.34	4.70	8.25

### Trades by Order Type

Delivery Day		28.06	29.06	30.06	01.07	02.07	03.07	04.07	
<b>Ord Price Type</b>		<b>Sell &amp; Buy Trades in (GWh) per Price Type</b>							<b>(%)</b>
<b>PPT</b>	(S)	0.000	0.000	0.000	0.000	0.000	0.000	0.000	0.00%
<b>HBD</b>	(S)	1.770	1.804	2.790	2.505	0.758	1.144	3.352	81.22%
<b>BLK</b>	(S)	0.000	0.000	0.000	0.000	0.000	0.000	0.000	0.00%
<b>CPL</b>	(S)	0.850	0.102	0.016	0.031	0.913	1.205	0.775	18.78%
<b>PPT</b>	(B)	0.000	0.000	0.000	0.000	0.000	0.000	0.000	0.00%
<b>HBD</b>	(B)	1.728	1.323	1.229	1.733	1.294	1.769	1.640	39.74%
<b>BLK</b>	(B)	0.000	0.000	0.000	0.000	0.000	0.000	0.000	0.00%
<b>CPL</b>	(B)	0.892	0.582	1.577	0.803	0.376	0.580	2.487	60.26%
		<b>Sell &amp; Buy Orders Traded per Price Type</b>							<b>(%)</b>
<b>PPT</b>	(S)	0	0	0	0	0	0	0	0.00%
<b>HBD</b>	(S)	382	538	567	391	275	315	394	100.00%
<b>BLK</b>	(S)	0	0	0	0	0	0	0	0.00%
<b>PPT</b>	(B)	0	0	0	0	0	0	0	0.00%
<b>HBD</b>	(B)	522	479	300	563	513	635	407	100.00%
<b>BLK</b>	(B)	0	0	0	0	0	0	0	0.00%

- MCP** Market Clearing Price (€/MWh)
- PPT** Priority Price-Taking
- HBD** Hybrid
- BLK** Block
- CPL** Market Coupling Flow

### Trade's Volume Mix

	Sell - MWh	Buy - MWh	
<b>Lignite</b>	0	0	(0.0%)
<b>Crete Conv.</b>	0	0	(0.0%)
<b>Gas</b>	749	585	(14.2%)
<b>Hydro</b>	43	40	(1.0%)
<b>Imports</b>	775		
<b>RES</b>	2,006	569	(13.8%)
<b>Crete RES</b>	0	0	(0.0%)
<b>BESS</b>	0	0	(0.0%)
<b>HV Load</b>	0	1	(0.0%)
<b>MV Load</b>	27	178	(4.3%)
<b>LV Load</b>	291	266	(6.5%)
<b>Crete Load</b>	0	0	(0.0%)
<b>Pumping</b>	236	0	(0.0%)
<b>Exports</b>		2,487	(60.3%)
<b>Sys.Losses</b>	0	0	(0.0%)
<b>D/R Load</b>	0	0	(0.0%)

