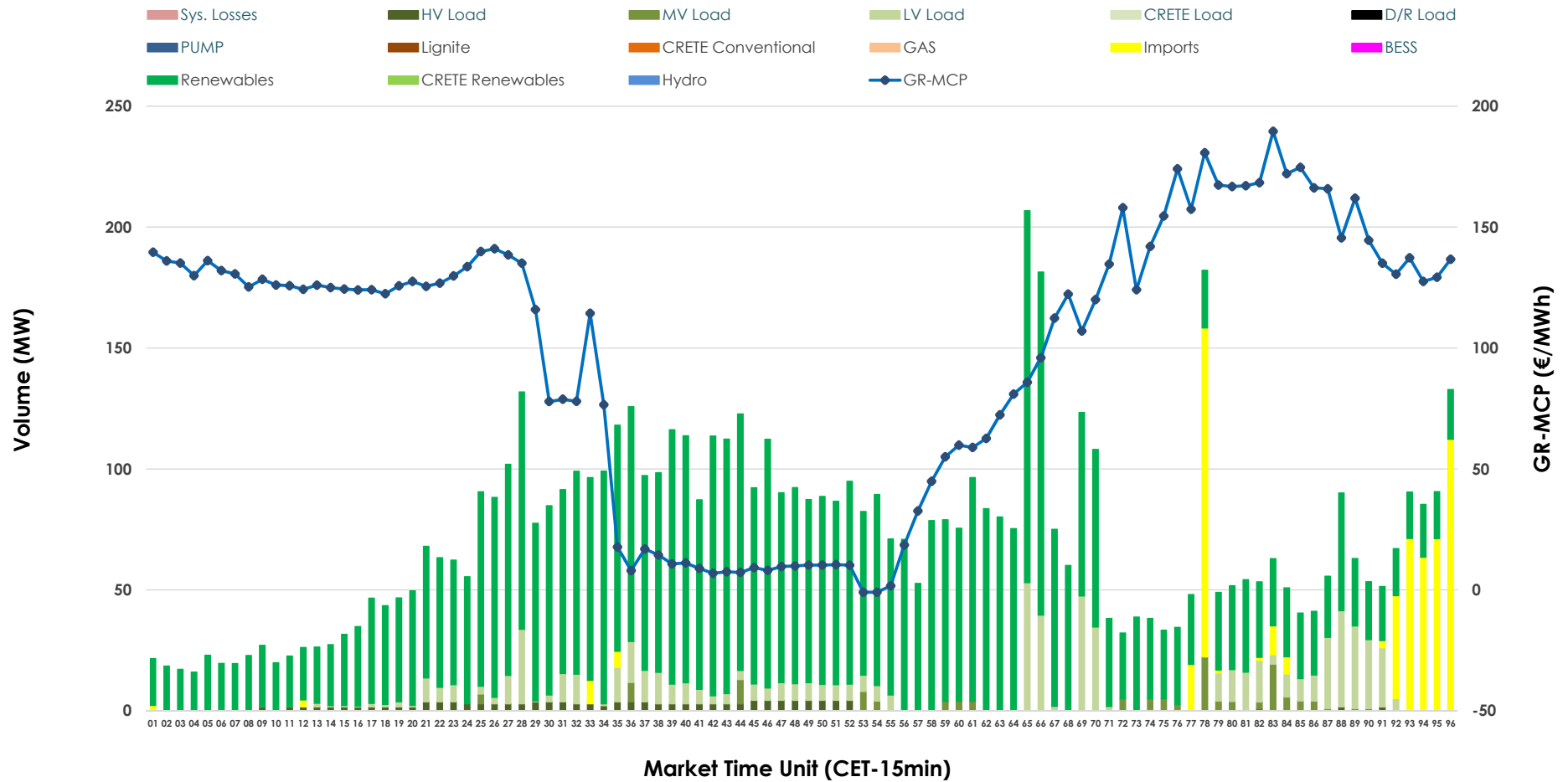


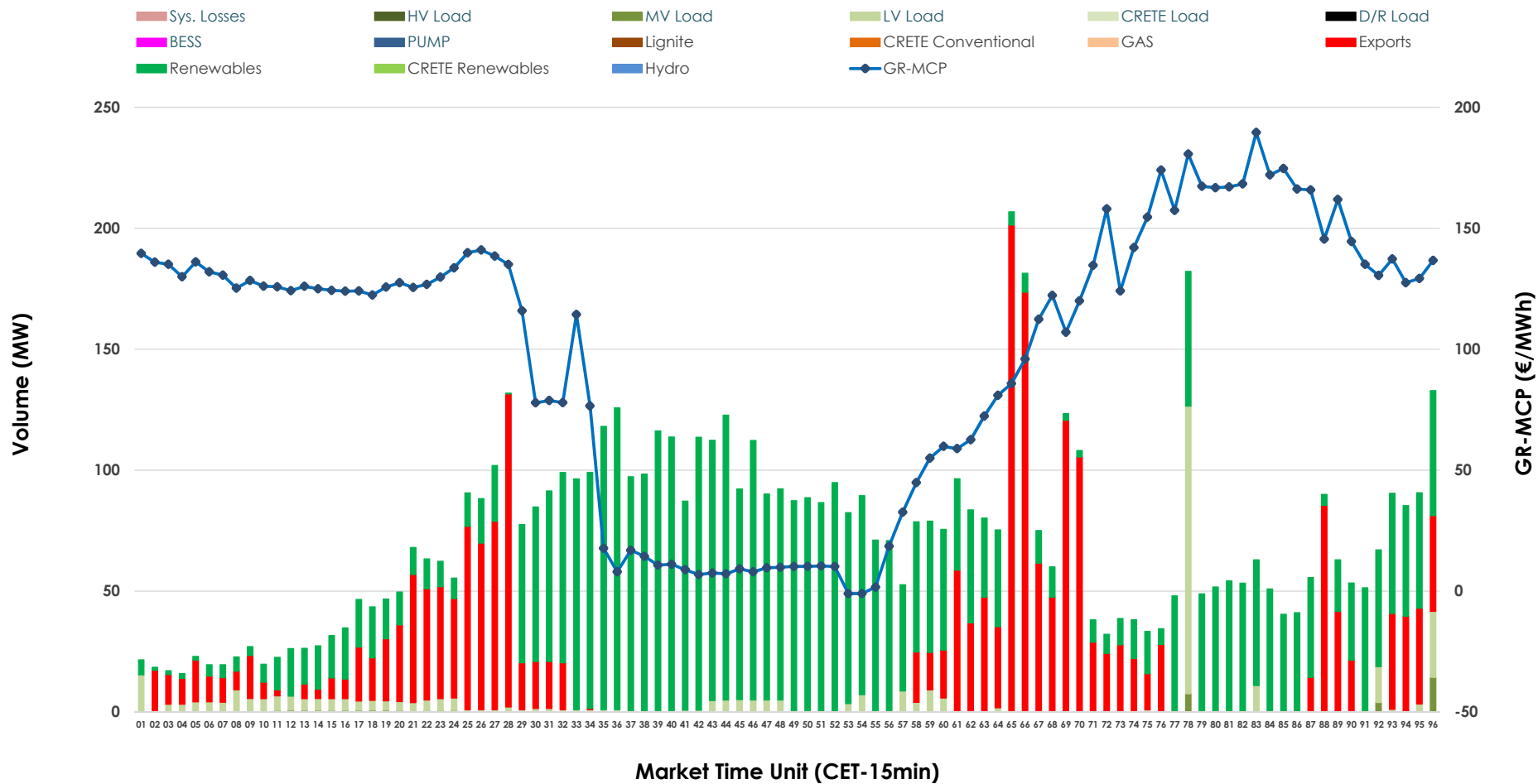


# IDA '2' Market Outlook

08.06.2026 IDA '2' Market - Sell



### 08.06.2026 IDA '2' Market - Buy



### GR Bidding Zone Weekly Figures

Delivery Day	02.06	03.06	04.06	05.06	06.06	07.06	08.06
	👇 -7%	👇 -10%	👉 2%	👉 26%	👇 -28%	👇 -29%	👆 74%
<b>Avg.MCP (€/MWh)</b>	96.79	86.72	88.19	111.27	80.15	56.96	99.05
<b>Max.MCP (€/MWh)</b>	173.58	155.00	210.77	181.27	152.78	148.74	189.62
<b>Min.MCP (€/MWh)</b>	0.75	-10.47	0.00	30.63	-10.82	-21.61	-1.00
	👆 37%	👇 -49%	👉 13%	👇 -9%	👆 74%	👇 -33%	👇 -2%
<b>Tot.Vol(GWh)</b>	5,80	2,94	3,33	3,03	5,28	3,53	3,47

### Trades by Order Type

Delivery Day		02.06	03.06	04.06	05.06	06.06	07.06	08.06	
<b>Ord Price Type</b>		<b>Sell &amp; Buy Trades in (GWh) per Price Type</b>							<b>(%)</b>
<b>PPT</b>	(S)	0.000	0.000	0.000	0.000	0.000	0.000	0.000	0.00%
<b>HBD</b>	(S)	1.793	1.455	0.958	0.948	1.595	0.633	1.594	91.90%
<b>BLK</b>	(S)	0.000	0.000	0.000	0.000	0.000	0.000	0.000	0.00%
<b>CPL</b>	(S)	1.107	0.016	0.707	0.570	1.045	1.130	0.141	8.10%
<b>PPT</b>	(B)	0.000	0.000	0.000	0.000	0.000	0.000	0.000	0.00%
<b>HBD</b>	(B)	2.573	1.302	1.332	1.114	2.207	1.399	1.169	67.38%
<b>BLK</b>	(B)	0.000	0.000	0.000	0.000	0.000	0.000	0.000	0.00%
<b>CPL</b>	(B)	0.327	0.170	0.333	0.404	0.434	0.364	0.566	32.62%
		<b>Sell &amp; Buy Orders Traded per Price Type</b>							<b>(%)</b>
<b>PPT</b>	(S)	0	0	0	0	0	0	0	0.00%
<b>HBD</b>	(S)	335	226	210	232	393	223	305	100.00%
<b>BLK</b>	(S)	0	0	0	0	0	0	0	0.00%
<b>PPT</b>	(B)	0	0	0	0	0	0	0	0.00%
<b>HBD</b>	(B)	736	418	380	483	655	539	448	100.00%
<b>BLK</b>	(B)	0	0	0	0	0	0	0	0.00%

- MCP** Market Clearing Price (€/MWh)
- PPT** Priority Price-Taking
- HBD** Hybrid
- BLK** Block
- CPL** Market Coupling Flow

### Trade's Volume Mix

	Sell - MWh	Buy - MWh	
<b>Lignite</b> (0.0%)	0	0	(0.0%)
<b>Crete Conv.</b> (0.0%)	0	0	(0.0%)
<b>Gas</b> (0.0%)	0	0	(0.0%)
<b>Hydro</b> (0.0%)	0	0	(0.0%)
<b>Imports</b> (8.1%)	141		
<b>RES</b> (78.0%)	1,352	1,064	(61.3%)
<b>Crete RES</b> (0.0%)	0	0	(0.0%)
<b>BESS</b> (0.0%)	0	0	(0.0%)
<b>HV Load</b> (1.9%)	34	0	(0.0%)
<b>MV Load</b> (1.9%)	32	9	(0.5%)
<b>LV Load</b> (10.1%)	176	96	(5.5%)
<b>Crete Load</b> (0.0%)	0	0	(0.0%)
<b>Pumping</b> (0.0%)	0	0	(0.0%)
<b>Exports</b>		566	(32.6%)
<b>Sys.Losses</b> (0.0%)	0	0	(0.0%)
<b>D/R Load</b> (0.0%)	0	0	(0.0%)

