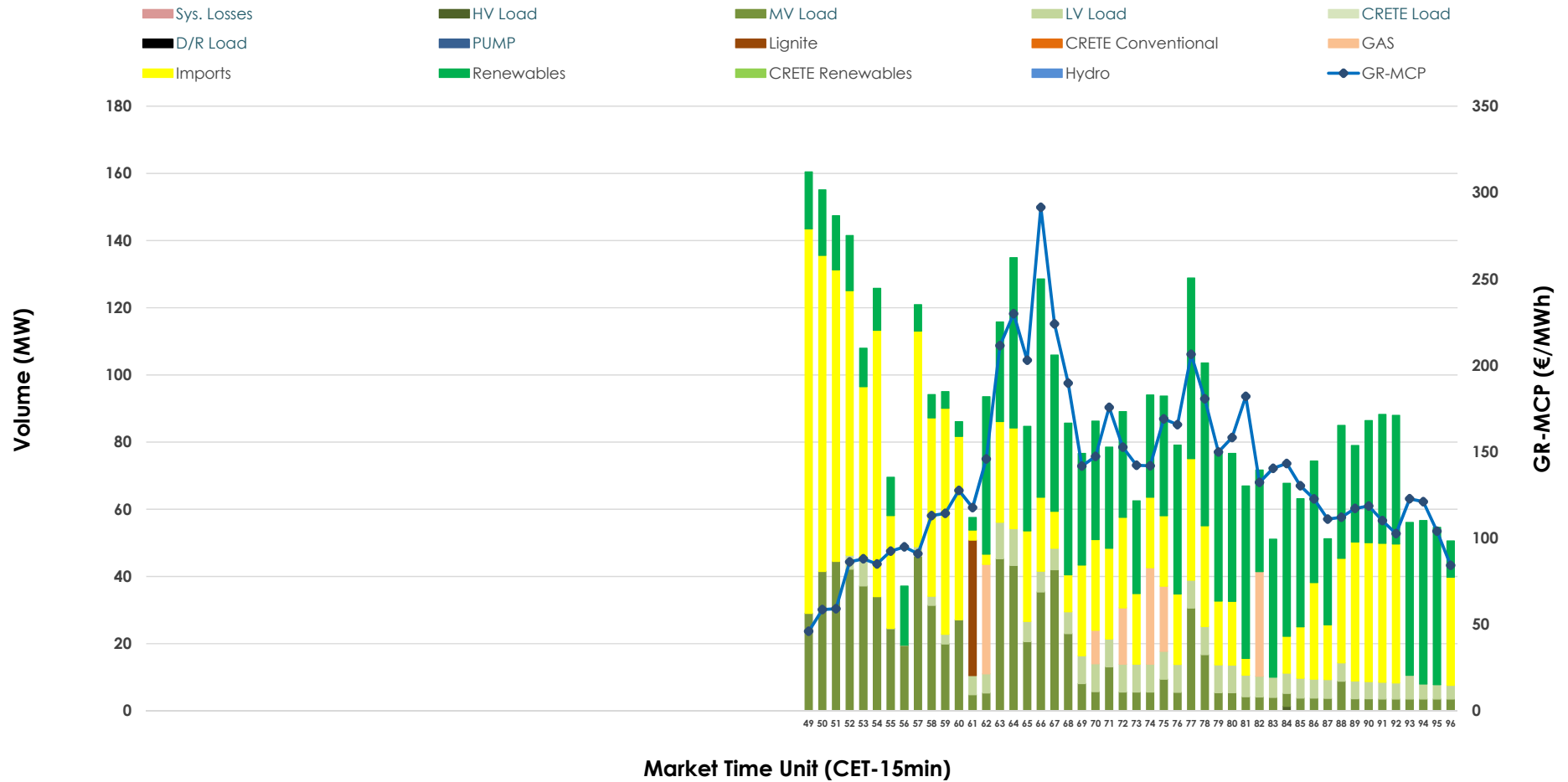


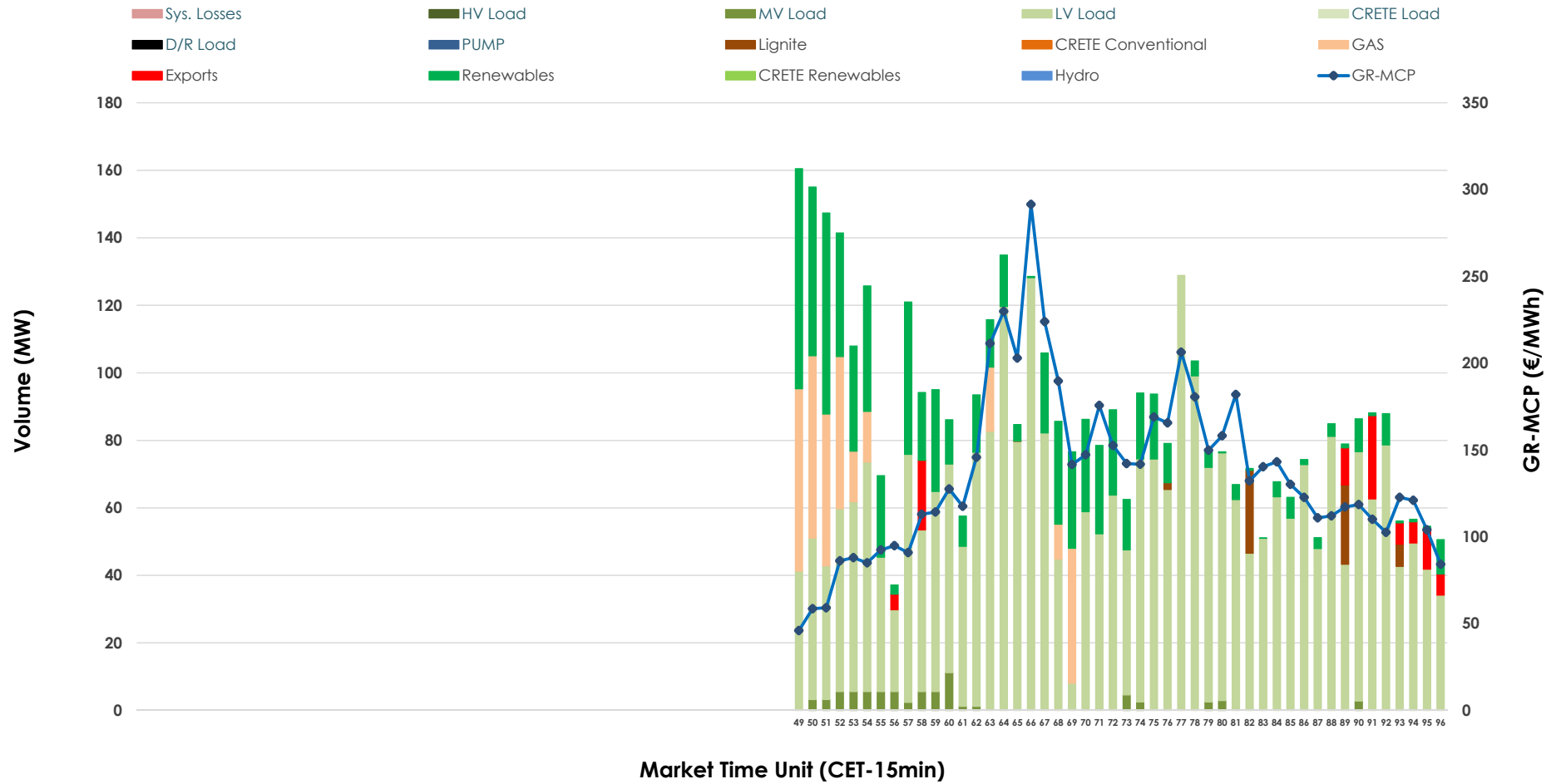


IDA '3' Market Outlook

19.12.2025 IDA '3' Market - Sell



19.12.2025 IDA '3' Market - Buy



GR Bidding Zone Weekly Figures

Delivery Day	13.12	14.12	15.12	16.12	17.12	18.12	19.12
	👇 -3%	👆 2%	👆 38%	👆 8%	👇 -16%	👆 51%	👇 -35%
Avg.MCP (€/MWh)	109.38	111.40	153.22	165.56	138.60	209.50	136.53
Max.MCP (€/MWh)	129.28	141.00	249.84	280.15	206.35	341.53	291.46
Min.MCP (€/MWh)	84.37	26.71	52.50	83.40	80.85	94.35	46.02
	👆 6%	👇 -10%	👇 -40%	👇 -17%	👆 230%	👇 -33%	👆 14%
Tot.Vol(GWh)	1.89	1.70	1.01	0.84	2.78	1.87	2.14

Trades by Order Type

Delivery Day		13.12	14.12	15.12	16.12	17.12	18.12	19.12	
Ord Price Type		Sell & Buy Trades in (GWh) per Price Type							(%)
PPT	(S)	0.000	0.000	0.000	0.000	0.000	0.000	0.000	0.00%
HBD	(S)	0.221	0.450	0.479	0.337	1.019	0.614	0.692	64.61%
BLK	(S)	0.000	0.000	0.000	0.000	0.000	0.000	0.000	0.00%
CPL	(S)	0.722	0.398	0.029	0.085	0.373	0.321	0.379	35.39%
PPT	(B)	0.000	0.000	0.000	0.000	0.000	0.000	0.000	0.00%
HBD	(B)	0.709	0.477	0.404	0.374	1.325	0.770	1.048	97.85%
BLK	(B)	0.000	0.000	0.000	0.000	0.000	0.000	0.000	0.00%
CPL	(B)	0.234	0.370	0.103	0.048	0.067	0.165	0.023	2.15%
		Sell & Buy Orders Traded per Price Type							(%)
PPT	(S)	0	0	0	0	0	0	0	0.00%
HBD	(S)	55	103	50	48	142	87	260	100.00%
BLK	(S)	0	0	0	0	0	0	0	0.00%
PPT	(B)	0	0	0	0	0	0	0	0.00%
HBD	(B)	195	162	165	208	241	119	148	100.00%
BLK	(B)	0	0	0	0	0	0	0	0.00%

- MCP** Market Clearing Price (€/MWh)
- PPT** Priority Price-Taking
- HBD** Hybrid
- BLK** Block
- CPL** Market Coupling Flow

Trade's Volume Mix

	Sell - MWh	Buy - MWh	
Lignite (0.9%)	10	14	(1.3%)
Crete Conv. (0.0%)	0	0	(0.0%)
Gas (3.2%)	35	74	(6.9%)
Hydro (0.0%)	0	0	(0.0%)
Imports (35.4%)	379		
RES (35.6%)	381	192	(17.9%)
Crete RES (0.0%)	0	0	(0.0%)
HV Load (0.0%)	0	0	(0.0%)
MV Load (18.6%)	199	19	(1.8%)
LV Load (6.2%)	67	748	(69.9%)
Crete Load (0.0%)	0	0	(0.0%)
Pumping (0.0%)	0	0	(0.0%)
Exports		23	(2.1%)
Sys.Losses (0.0%)	0	0	(0.0%)
D/R Load (0.0%)	0	0	(0.0%)

