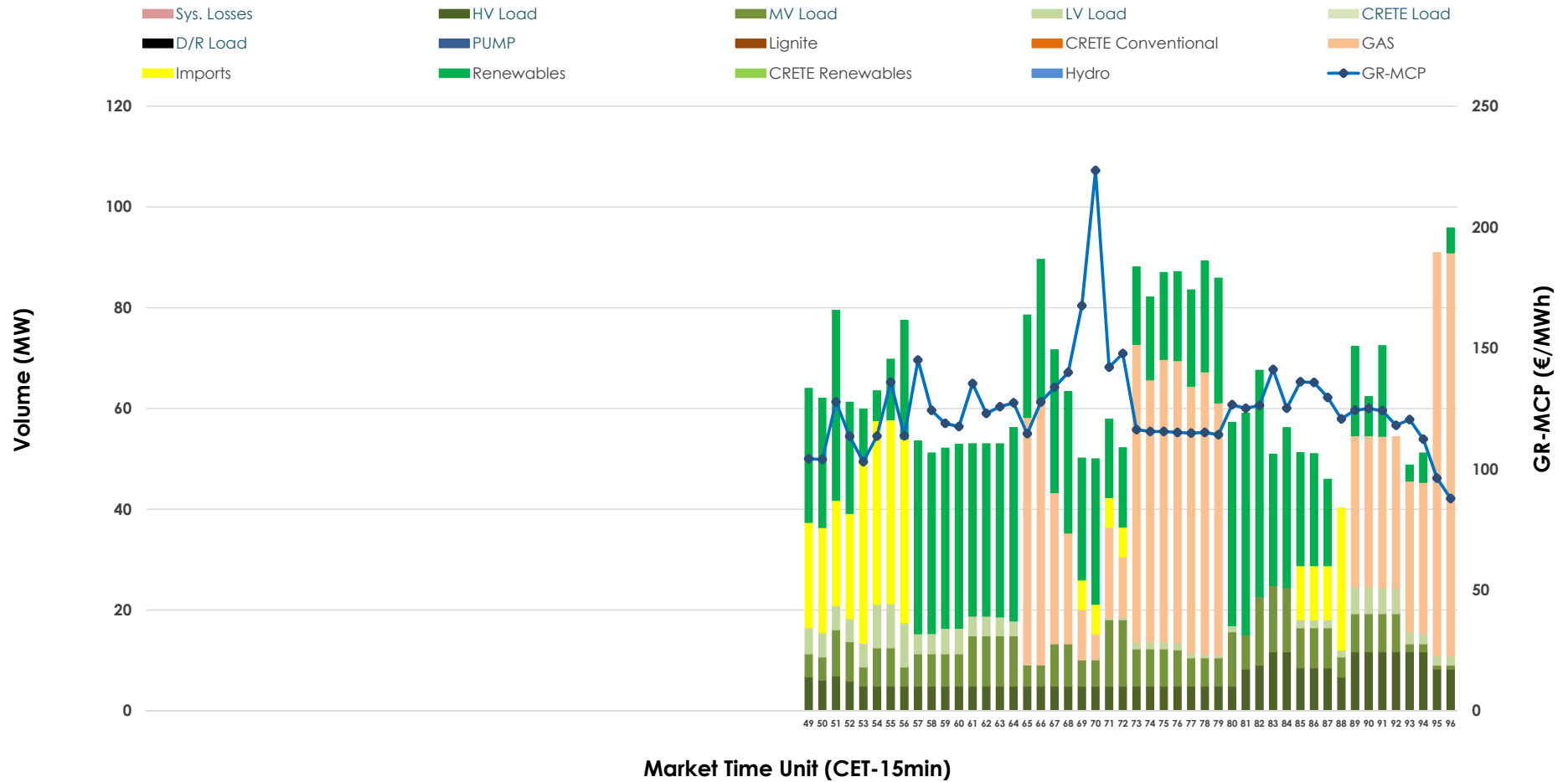


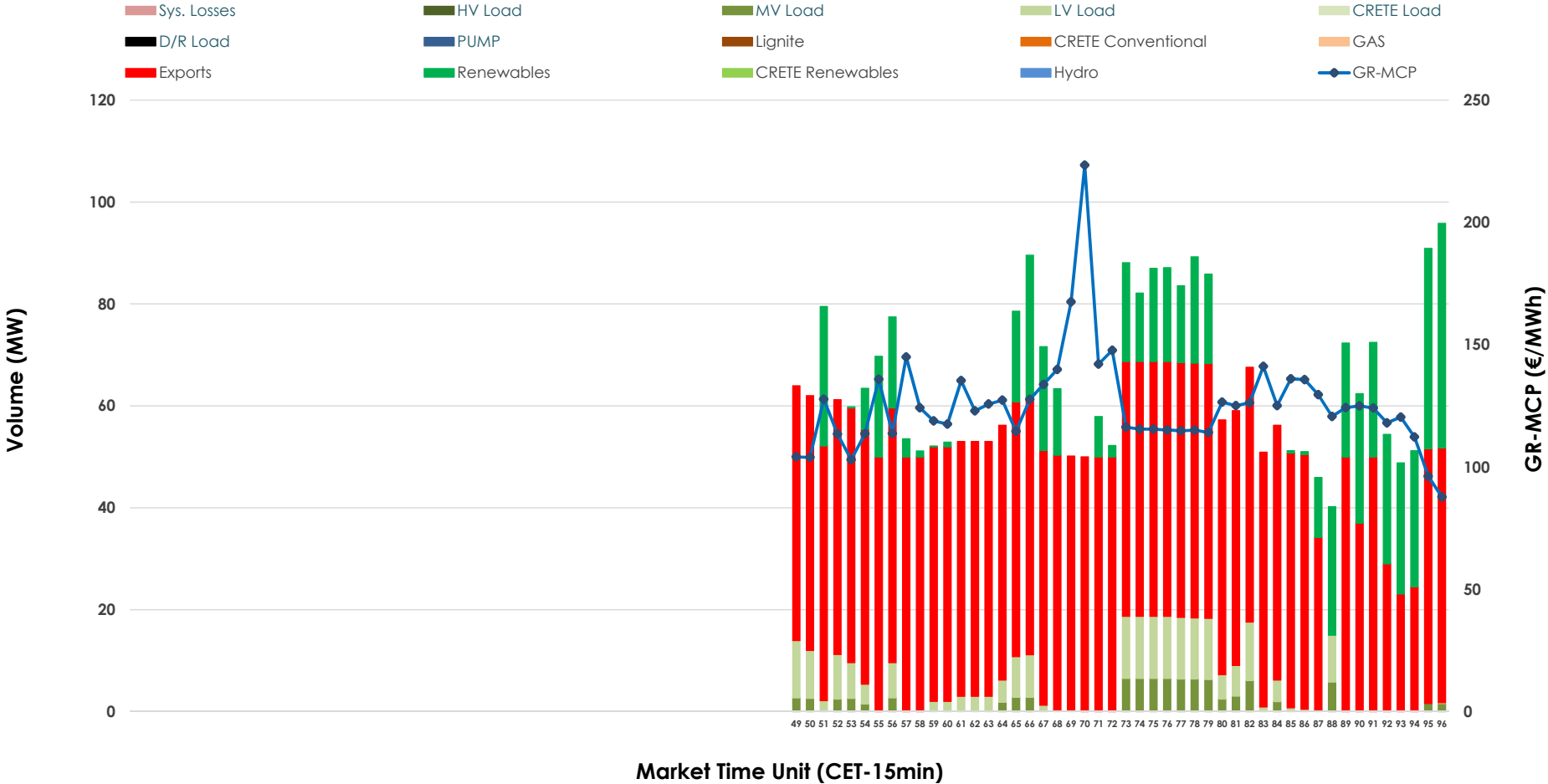


# IDA '3' Market Outlook

05.01.2026 IDA '3' Market - Sell



### 05.01.2026 IDA '3' Market - Buy



### GR Bidding Zone Weekly Figures

Delivery Day	30.12	31.12	01.01	02.01	03.01	04.01	05.01
	👇 -17%	👆 32%	👇 -36%	👆 19%	👇 -4%	👇 -5%	👆 38%
<b>Avg.MCP (€/MWh)</b>	97.88	129.63	83.47	99.14	95.35	90.50	125.21
<b>Max.MCP (€/MWh)</b>	147.05	221.33	117.41	124.90	125.00	125.96	223.41
<b>Min.MCP (€/MWh)</b>	35.00	81.04	33.48	23.25	66.82	43.20	87.77
	👆 88%	👆 33%	👇 -54%	👆 36%	👇 -12%	👆 29%	👇 -29%
<b>Tot.Vol(GWh)</b>	2.30	3.06	1.41	1.92	1.69	2.18	1.55

### Trades by Order Type

Delivery Day		30.12	31.12	01.01	02.01	03.01	04.01	05.01	
<b>Ord Price Type</b>		<b>Sell &amp; Buy Trades in (GWh) per Price Type</b>							<b>(%)</b>
<b>PPT</b>	(S)	0.000	0.000	0.000	0.000	0.000	0.000	0.000	0.00%
<b>HBD</b>	(S)	0.688	0.780	0.615	0.420	0.819	0.655	0.698	89.91%
<b>BLK</b>	(S)	0.000	0.000	0.000	0.000	0.000	0.000	0.000	0.00%
<b>CPL</b>	(S)	0.462	0.749	0.089	0.539	0.026	0.436	0.078	10.09%
<b>PPT</b>	(B)	0.000	0.000	0.000	0.000	0.000	0.000	0.000	0.00%
<b>HBD</b>	(B)	0.344	1.459	0.150	0.242	0.495	0.921	0.215	27.64%
<b>BLK</b>	(B)	0.000	0.000	0.000	0.000	0.000	0.000	0.000	0.00%
<b>CPL</b>	(B)	0.805	0.070	0.555	0.716	0.350	0.170	0.562	72.36%
		<b>Sell &amp; Buy Orders Traded per Price Type</b>							<b>(%)</b>
<b>PPT</b>	(S)	0	0	0	0	0	0	0	0.00%
<b>HBD</b>	(S)	219	181	138	203	241	129	193	100.00%
<b>BLK</b>	(S)	0	0	0	0	0	0	0	0.00%
<b>PPT</b>	(B)	0	0	0	0	0	0	0	0.00%
<b>HBD</b>	(B)	187	279	129	203	188	230	91	100.00%
<b>BLK</b>	(B)	0	0	0	0	0	0	0	0.00%

**MCP** Market Clearing Price (€/MWh)  
**PPT** Priority Price-Taking  
**HBD** Hybrid  
**BLK** Block  
**CPL** Market Coupling Flow

### Trade's Volume Mix

	Sell - MWh	Buy - MWh	
<b>Lignite</b> (0.0%)	0	0	(0.0%)
<b>Crete Conv.</b> (0.0%)	0	0	(0.0%)
<b>Gas</b> (29.6%)	230	0	(0.0%)
<b>Hydro</b> (0.0%)	0	0	(0.0%)
<b>Imports</b> (10.1%)	78		
<b>RES</b> (34.7%)	270	140	(18.1%)
<b>Crete RES</b> (0.0%)	0	0	(0.0%)
<b>HV Load</b> (10.4%)	81	0	(0.0%)
<b>MV Load</b> (11.1%)	86	22	(2.9%)
<b>LV Load</b> (4.1%)	32	52	(6.7%)
<b>Crete Load</b> (0.0%)	0	0	(0.0%)
<b>Pumping</b> (0.0%)	0	0	(0.0%)
<b>Exports</b>		562	(72.4%)
<b>Sys.Losses</b> (0.0%)	0	0	(0.0%)
<b>D/R Load</b> (0.0%)	0	0	(0.0%)

