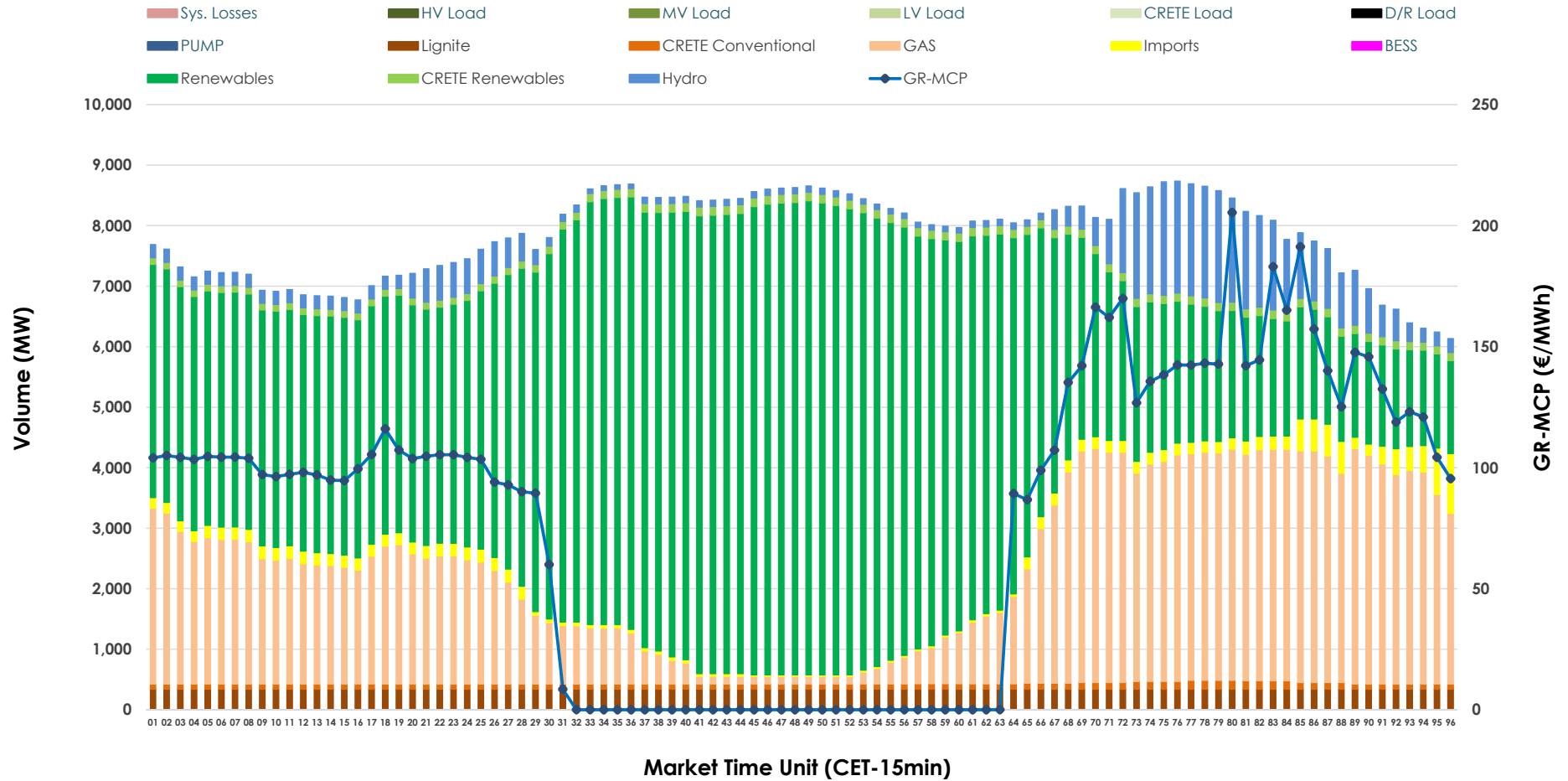


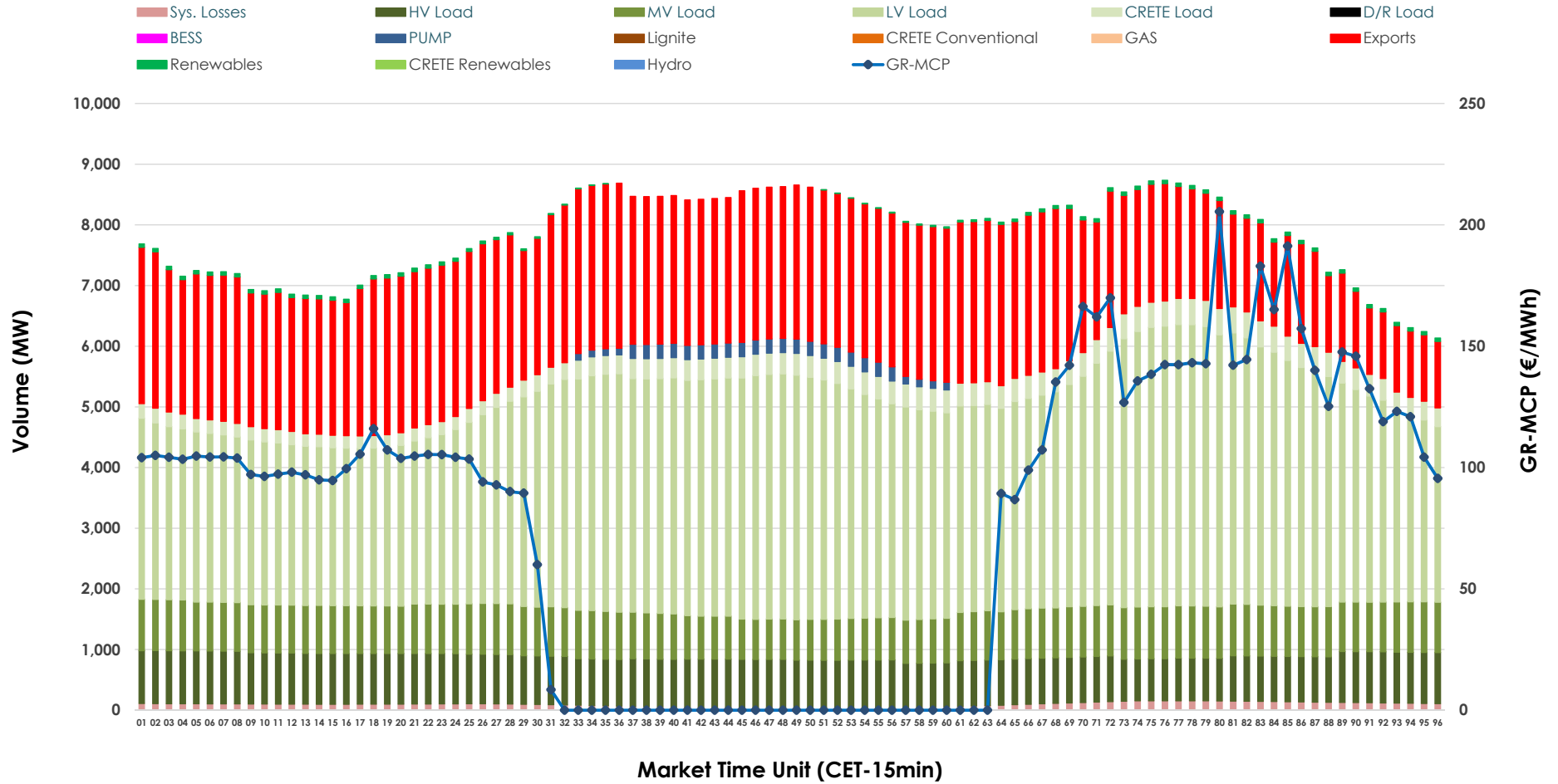


Day-Ahead Market Outlook

25.03.2026 Day-Ahead Market - Sell



25.03.2026 Day-Ahead Market - Buy



GR Bidding Zone Weekly Figures

Delivery Day	19.03	20.03	21.03	22.03	23.03	24.03	25.03
	↗ 11%	↗ 11%	↘ -14%	↘ -12%	↗ 74%	↘ -26%	↘ -28%
Avg.MCP (€/MWh)	101.23	112.04	96.67	84.78	147.74	109.02	78.87
Max.MCP (€/MWh)	219.70	250.73	176.61	192.93	281.69	198.53	205.42
Min.MCP (€/MWh)	3.34	13.00	0.00	0.00	63.72	8.47	0.00
	↘ -2%	↗ 5%	↘ -2%	↘ -9%	↗ 9%	↘ -1%	↘ -3%
Tot.Vol(GWh)	386.01	405.85	396.49	362.14	394.91	389.09	376.78

Trades by Order Type

Delivery Day		19.03	20.03	21.03	22.03	23.03	24.03	25.03	
Ord Price Type		Sell & Buy Trades in (GWh) per Price Type							(%)
PPT	(S)	93.438	96.577	90.130	82.949	77.542	83.245	80.498	42.73%
HBD	(S)	74.421	78.081	79.261	67.215	71.298	76.867	77.174	40.96%
BLK	(S)	20.366	28.178	28.856	30.904	46.688	30.410	29.791	15.81%
CPL	(S)	4.778	0.092	0.000	0.000	1.928	4.021	0.928	0.49%
PPT	(B)	13.670	13.501	14.027	13.092	14.391	14.986	13.576	7.21%
HBD	(B)	153.841	153.779	145.947	132.444	147.269	153.909	136.888	72.66%
BLK	(B)	0.000	0.000	0.000	0.000	0.000	0.000	0.000	0.00%
CPL	(B)	25.492	35.647	38.273	35.532	35.796	25.648	37.926	20.13%
		Sell & Buy Orders Traded per Price Type							(%)
PPT	(S)	2001	2050	1902	1902	1886	1849	1726	38.91%
HBD	(S)	3003	3049	2881	2817	3216	3103	2699	60.84%
BLK	(S)	8	13	16	18	25	10	11	0.25%
PPT	(B)	2246	2233	2232	2217	2231	2234	2270	34.24%
HBD	(B)	4109	4064	4095	4167	4048	4147	4359	65.76%
BLK	(B)	0	0	0	0	0	0	0	0.00%

- MCP** Market Clearing Price (€/MWh)
- PPT** Priority Price-Taking
- HBD** Hybrid
- BLK** Block
- CPL** Market Coupling Flow

Trade's Volume Mix

		Sell - MWh	Buy - MWh	
Lignite	(4.3%)	8,160	0	(0.0%)
Crete Conv.	(1.2%)	2,254	0	(0.0%)
Gas	(25.7%)	48,414	0	(0.0%)
Hydro	(5.9%)	11,074	0	(0.0%)
Imports	(2.2%)	4,236		
RES	(59.0%)	111,109	882	(0.5%)
Crete RES	(1.7%)	3,144	0	(0.0%)
BESS	(0.0%)	0	0	(0.0%)
HV Load	(0.0%)	0	18,959	(10.1%)
MV Load	(0.0%)	0	18,974	(10.1%)
LV Load	(0.0%)	0	84,499	(44.9%)
Crete Load	(0.0%)	0	7,749	(4.1%)
Pumping	(0.0%)	0	1,410	(0.7%)
Exports			53,592	(28.4%)
Sys.Losses	(0.0%)	0	2,326	(1.2%)
D/R Load	(0.0%)	0	0	(0.0%)

