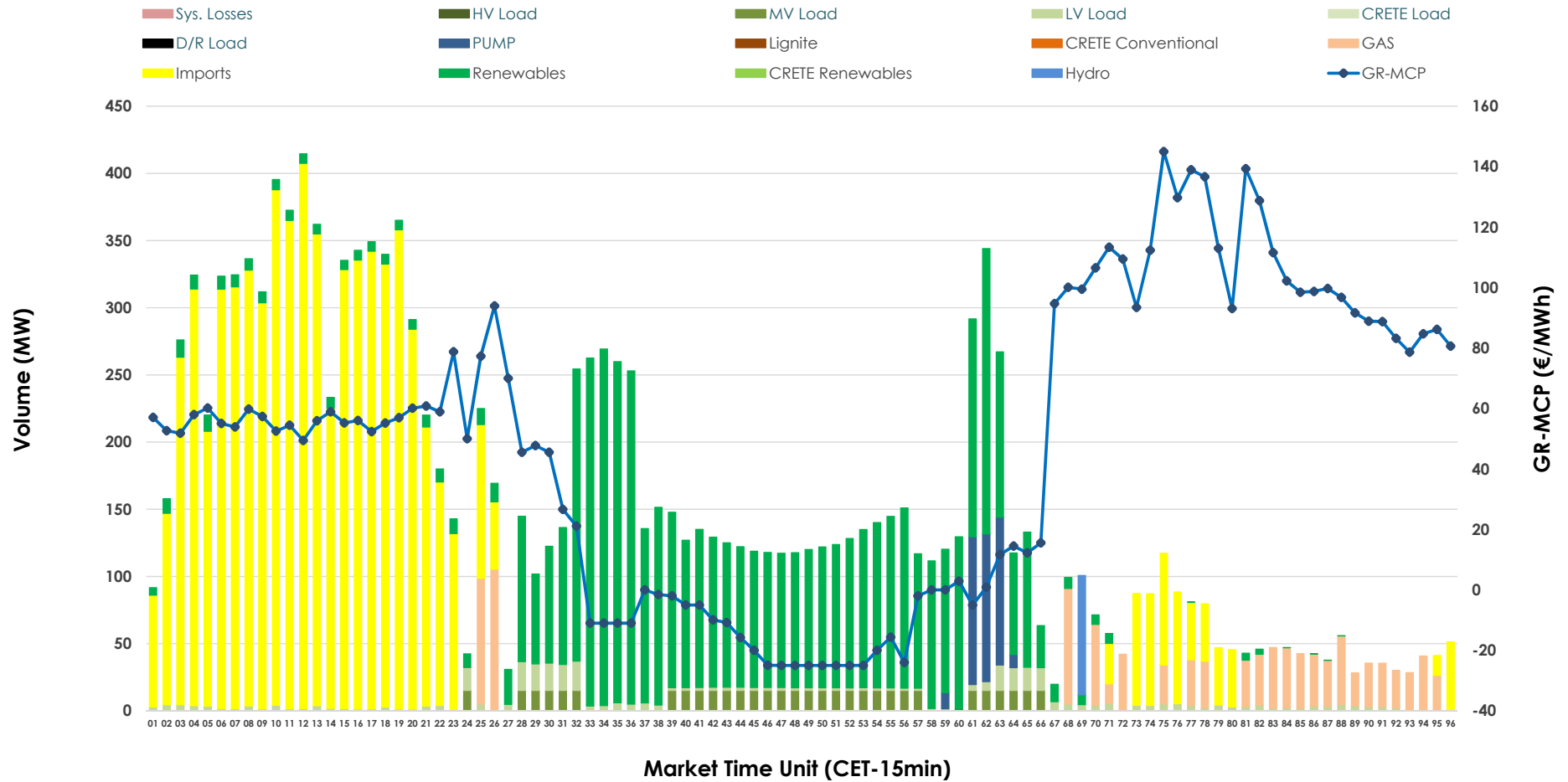


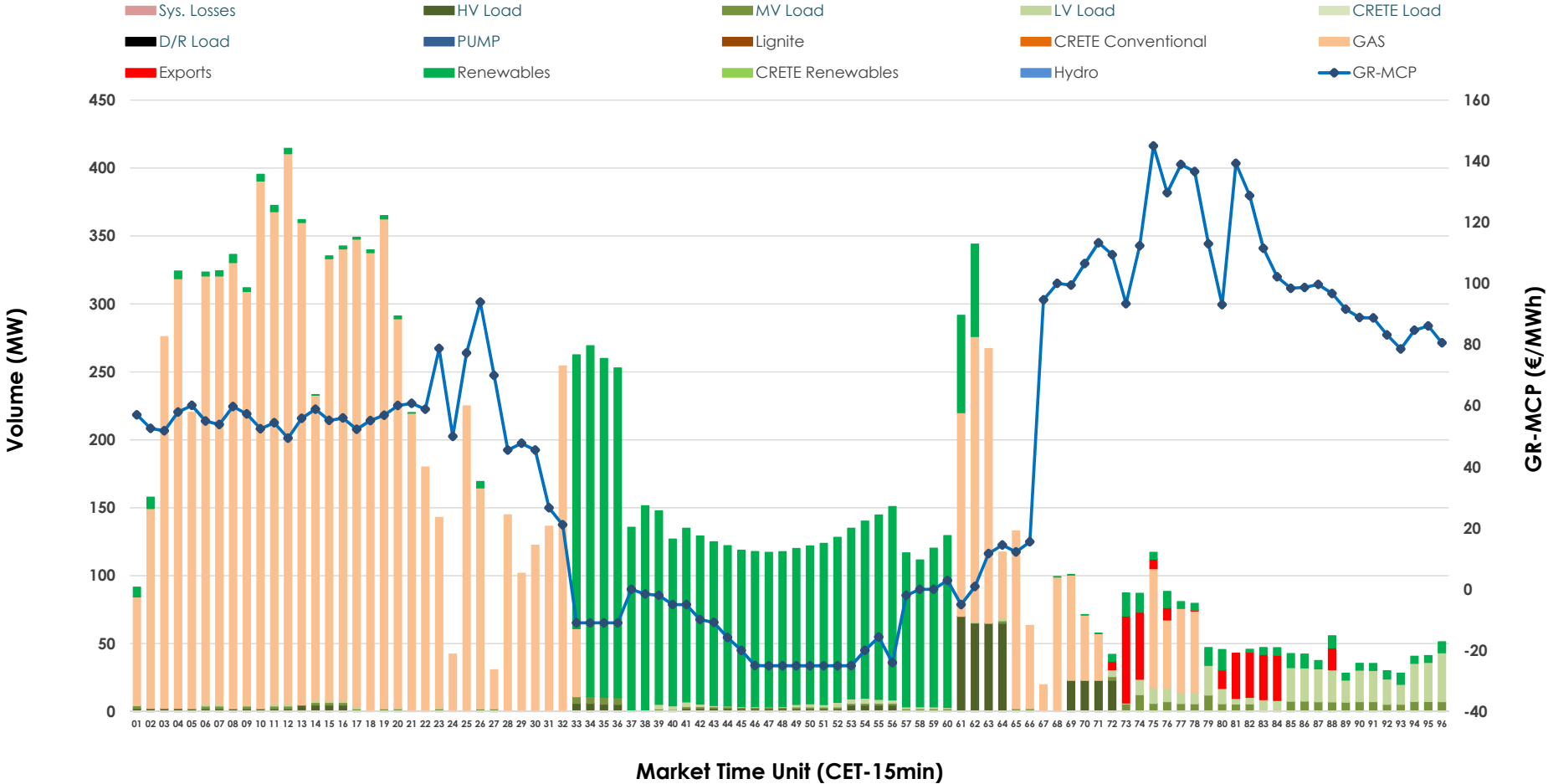


IDA '1' Market Outlook

23.02.2026 IDA '1' Market - Sell



23.02.2026 IDA '1' Market - Buy



GR Bidding Zone Weekly Figures

Delivery Day	17.02	18.02	19.02	20.02	21.02	22.02	23.02
	👇 -12%	👇 -20%	👆 44%	👉 5%	👇 -13%	👇 -32%	👉 13%
Avg.MCP (€/MWh)	58.93	47.19	67.79	71.20	61.92	42.37	48.02
Max.MCP (€/MWh)	158.86	172.62	173.45	137.36	116.41	112.01	145.00
Min.MCP (€/MWh)	-11.05	-21.98	-25.34	-12.13	-15.19	-13.88	-25.00
	👉 20%	👇 -51%	👇 -4%	👇 -8%	👉 24%	👇 -21%	👆 170%
Tot.Vol(GWh)	6.57	3.22	3.09	2.85	3.53	2.77	7.48

Trades by Order Type

Delivery Day		17.02	18.02	19.02	20.02	21.02	22.02	23.02	
Ord Price Type		Sell & Buy Trades in (GWh) per Price Type							(%)
PPT	(S)	0.000	0.000	0.000	0.000	0.000	0.000	0.000	0.00%
HBD	(S)	3.176	1.505	1.278	1.316	1.597	1.240	1.935	51.73%
BLK	(S)	0.000	0.000	0.000	0.000	0.000	0.000	0.000	0.00%
CPL	(S)	0.110	0.104	0.266	0.110	0.168	0.147	1.805	48.27%
PPT	(B)	0.000	0.000	0.000	0.000	0.000	0.000	0.000	0.00%
HBD	(B)	1.507	1.359	1.184	1.153	1.312	1.223	3.665	98.00%
BLK	(B)	0.000	0.000	0.000	0.000	0.000	0.000	0.000	0.00%
CPL	(B)	1.779	0.250	0.361	0.273	0.453	0.165	0.075	2.00%
		Sell & Buy Orders Traded per Price Type							(%)
PPT	(S)	0	0	0	0	0	0	0	0.00%
HBD	(S)	296	196	71	184	159	139	418	100.00%
BLK	(S)	0	0	0	0	0	0	0	0.00%
PPT	(B)	0	0	0	0	0	0	0	0.00%
HBD	(B)	537	670	734	983	673	583	414	100.00%
BLK	(B)	0	0	0	0	0	0	0	0.00%

- MCP** Market Clearing Price (€/MWh)
- PPT** Priority Price-Taking
- HBD** Hybrid
- BLK** Block
- CPL** Market Coupling Flow

Trade's Volume Mix

		Sell - MWh		Buy - MWh	
Lignite	(0.0%)	0	0	0	(0.0%)
Crete Conv.	(0.0%)	0	0	0	(0.0%)
Gas	(7.0%)	260	2,292		(61.3%)
Hydro	(0.6%)	22	0		(0.0%)
Imports	(48.3%)	1,805			
RES	(35.8%)	1,338	1,078		(28.8%)
Crete RES	(0.0%)	0	0		(0.0%)
HV Load	(0.0%)	0	118		(3.1%)
MV Load	(3.1%)	118	63		(1.7%)
LV Load	(2.9%)	108	115		(3.1%)
Crete Load	(0.0%)	0	0		(0.0%)
Pumping	(2.4%)	88	0		(0.0%)
Exports			75		(2.0%)
Sys.Losses	(0.0%)	0	0		(0.0%)
D/R Load	(0.0%)	0	0		(0.0%)

