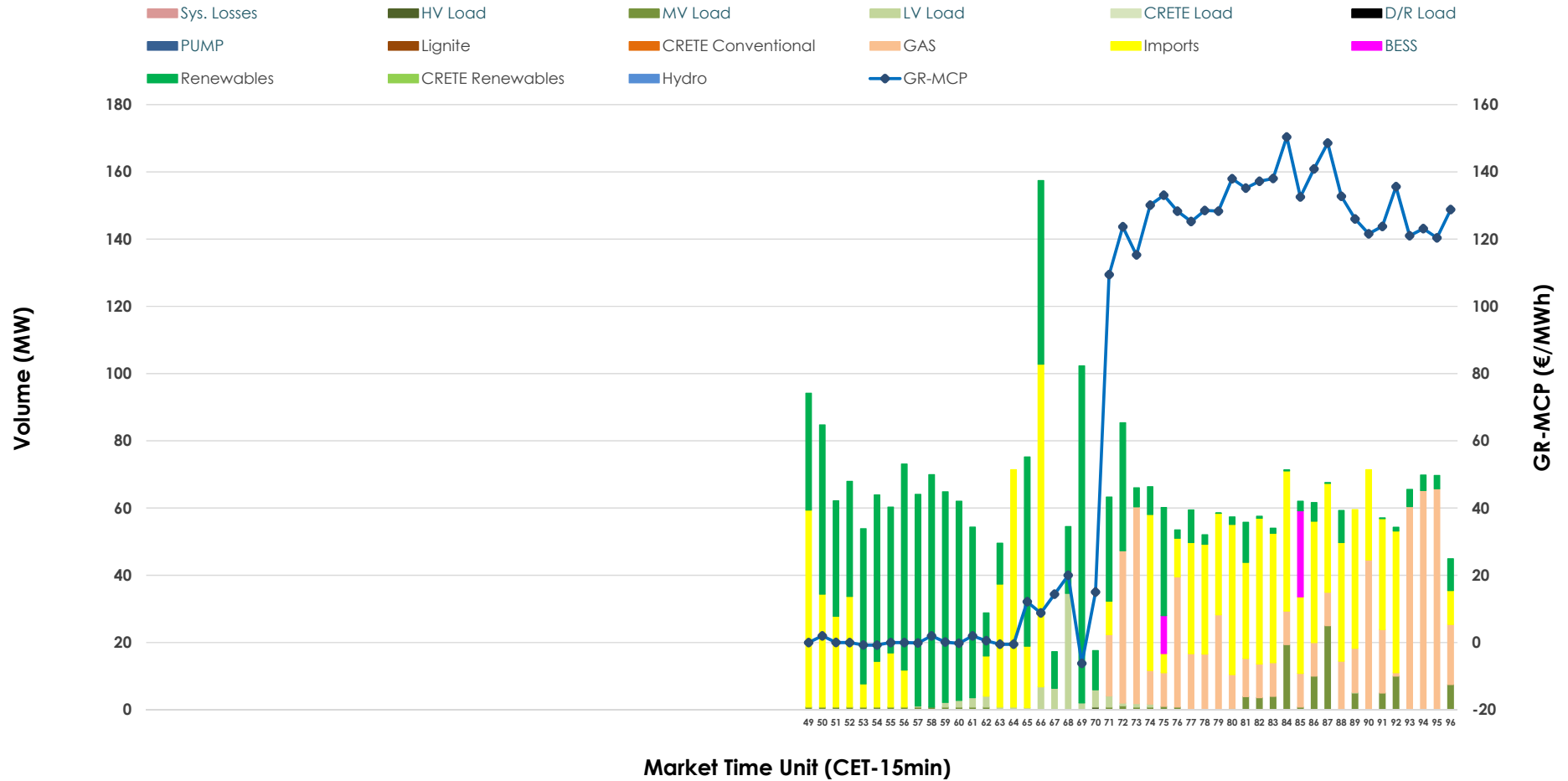


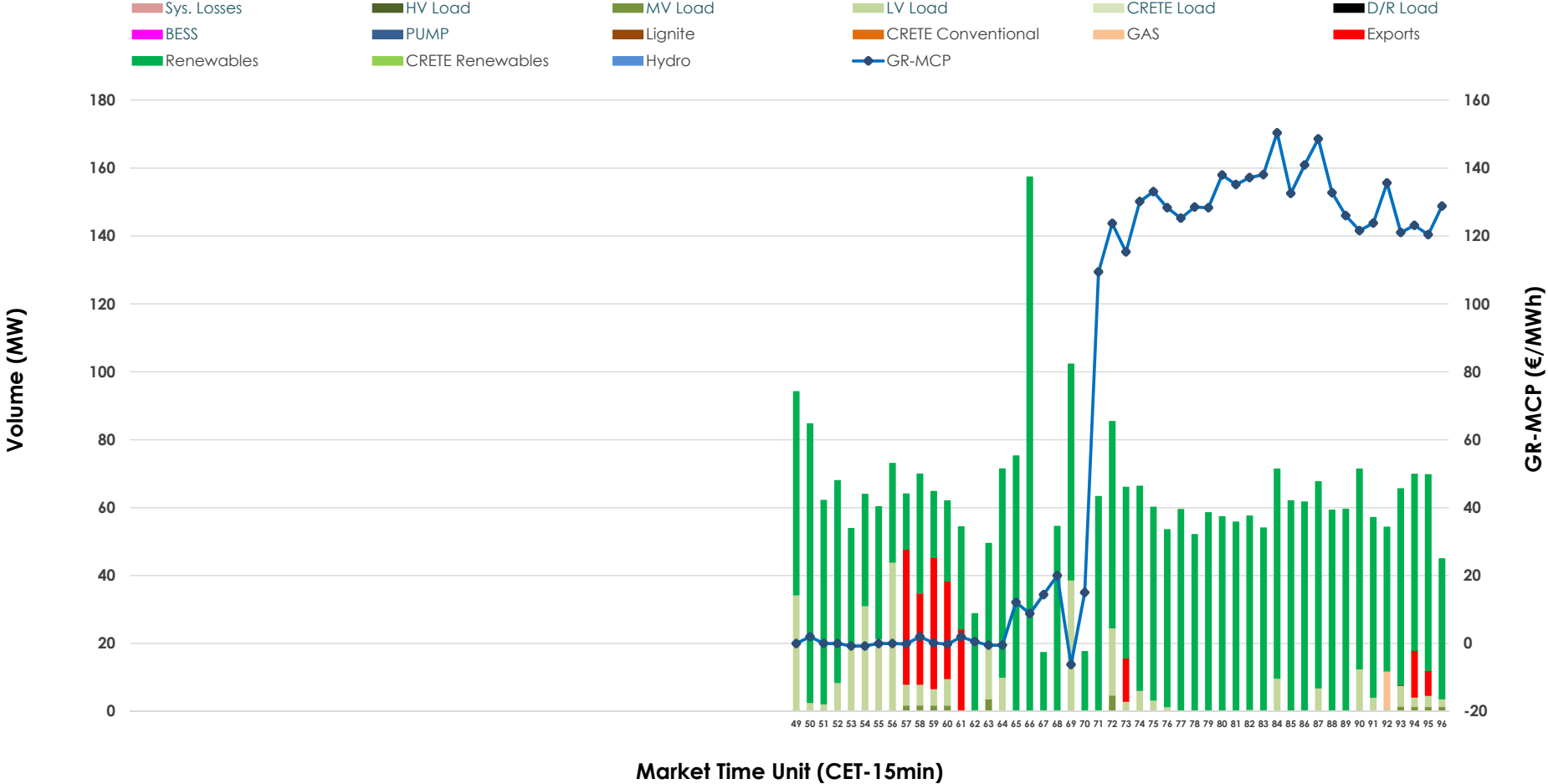


IDA '3' Market Outlook

28.06.2026 IDA '3' Market - Sell



28.06.2026 IDA '3' Market - Buy



GR Bidding Zone Weekly Figures

Delivery Day	22.06	23.06	24.06	25.06	26.06	27.06	28.06
			↗ 5%	↘ -24%	↘ -39%	↗ 7%	↘ -16%
Avg.MCP (€/MWh)	N/M	162.61	170.85	130.33	79.55	85.43	71.73
Max.MCP (€/MWh)	N/M	270.23	277.60	248.45	147.51	165.16	150.37
Min.MCP (€/MWh)	N/M	75.29	70.04	37.98	-6.58	-8.89	-6.23
			↗ 7%	↘ -2%	↘ -50%	↗ 16%	↘ -1%
Tot.Vol(GWh)	N/M	2.56	2.74	2.69	1.33	1.54	1.53

Trades by Order Type

Delivery Day		22.06	23.06	24.06	25.06	26.06	27.06	28.06		
Ord Price Type		Sell & Buy Trades in (GWh) per Price Type							(%)	
PPT	(S)		0.000	0.000	0.000	0.000	0.000	0.000	0.00%	
HBD	(S)		0.554	0.769	1.084	0.492	0.743	0.493	64.62%	
BLK	(S)		0.000	0.000	0.000	0.000	0.000	0.000	0.00%	
CPL	(S)		0.725	0.602	0.260	0.175	0.029	0.270	35.38%	
PPT	(B)		0.000	0.000	0.000	0.000	0.000	0.000	0.00%	
HBD	(B)		1.232	1.362	0.928	0.463	0.551	0.715	93.72%	
BLK	(B)		0.000	0.000	0.000	0.000	0.000	0.000	0.00%	
CPL	(B)		0.047	0.009	0.416	0.204	0.221	0.048	6.28%	
			Sell & Buy Orders Traded per Price Type							(%)
PPT	(S)		0	0	0	0	0	0	0.00%	
HBD	(S)		144	225	273	144	199	132	100.00%	
BLK	(S)		0	0	0	0	0	0	0.00%	
PPT	(B)		0	0	0	0	0	0	0.00%	
HBD	(B)		186	89	241	206	149	172	100.00%	
BLK	(B)		0	0	0	0	0	0	0.00%	

- MCP** Market Clearing Price (€/MWh)
- PPT** Priority Price-Taking
- HBD** Hybrid
- BLK** Block
- CPL** Market Coupling Flow

Trade's Volume Mix

	Sell - MWh	Buy - MWh	
Lignite (0.0%)	0	0	(0.0%)
Crete Conv. (0.0%)	0	0	(0.0%)
Gas (20.5%)	156	3	(0.4%)
Hydro (0.0%)	0	0	(0.0%)
Imports (35.4%)	270		
RES (36.9%)	281	623	(81.6%)
Crete RES (0.0%)	0	0	(0.0%)
BESS (1.2%)	9	0	(0.0%)
HV Load (0.0%)	0	0	(0.0%)
MV Load (3.6%)	28	6	(0.8%)
LV Load (2.4%)	19	83	(10.9%)
Crete Load (0.0%)	0	0	(0.0%)
Pumping (0.0%)	0	0	(0.0%)
Exports		48	(6.3%)
Sys.Losses (0.0%)	0	0	(0.0%)
D/R Load (0.0%)	0	0	(0.0%)

