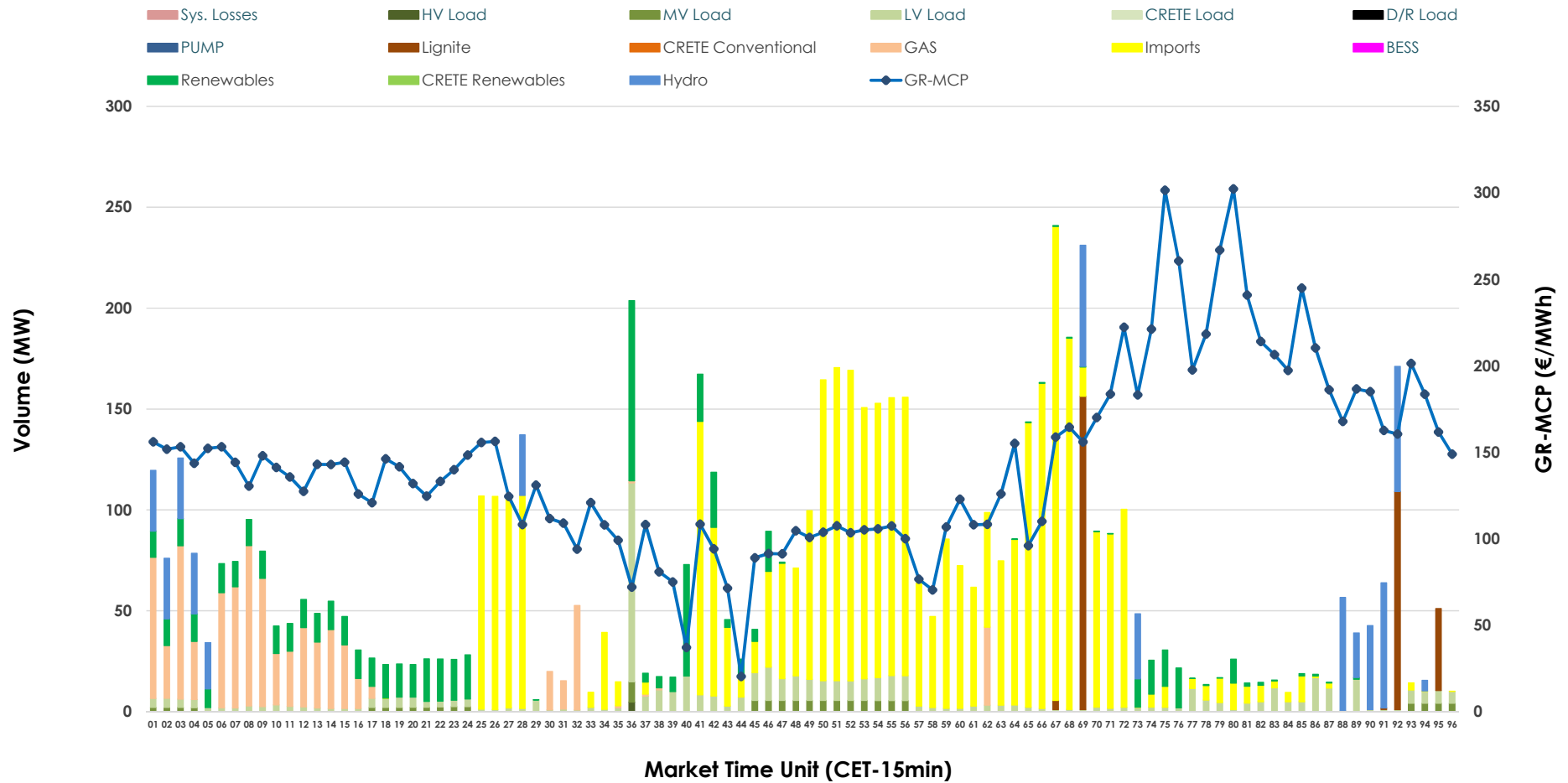


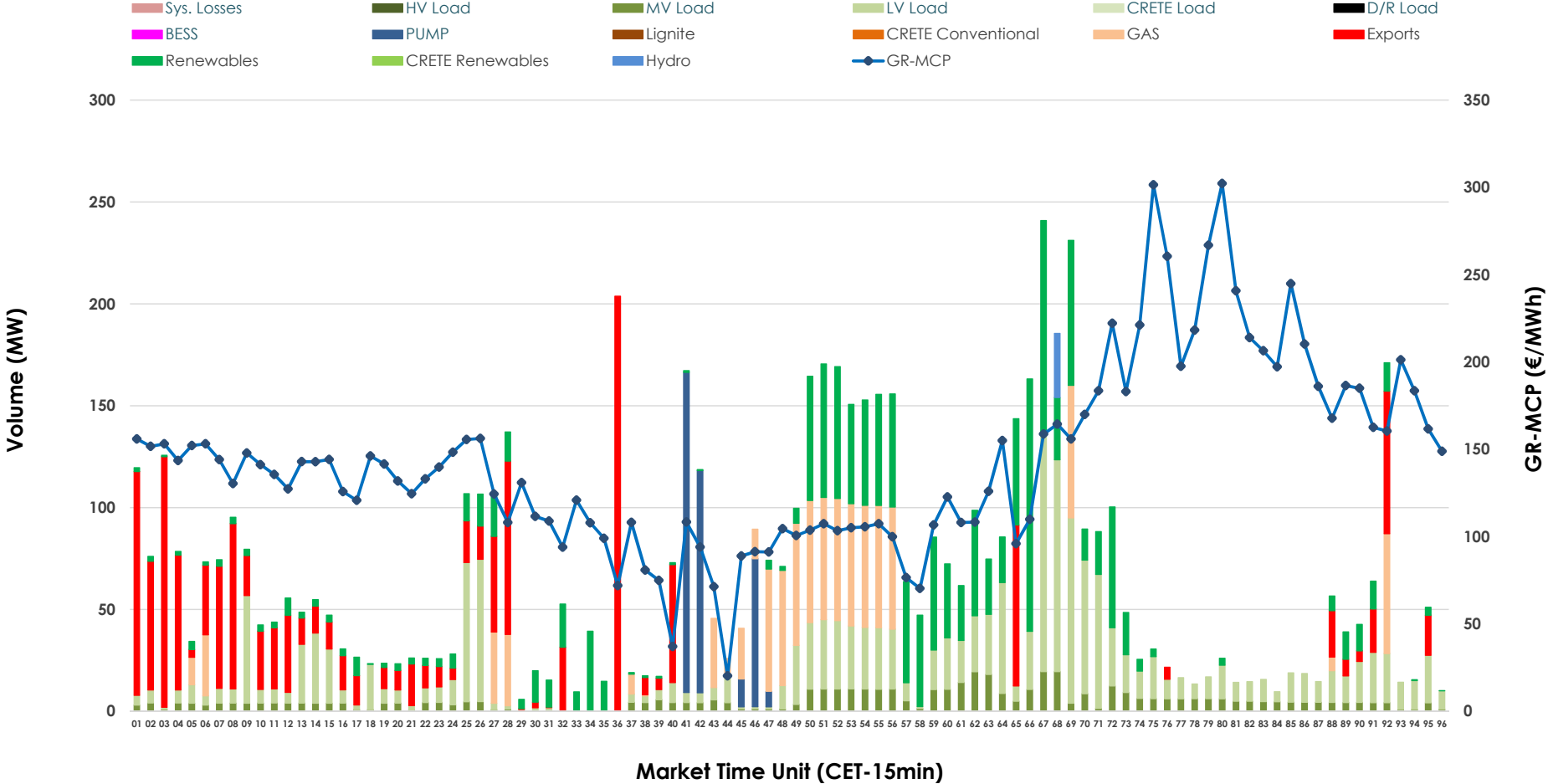


# IDA '1' Market Outlook

02.07.2026 IDA '1' Market - Sell



### 02.07.2026 IDA '1' Market - Buy



### GR Bidding Zone Weekly Figures

Delivery Day	26.06	27.06	28.06	29.06	30.06	01.07	02.07
	👇 -28%	👇 -8%	👇 -8%	👆 25%	👆 57%	👆 19%	👇 -15%
<b>Avg.MCP (€/MWh)</b>	85.06	77.88	72.03	90.14	141.44	168.85	142.91
<b>Max.MCP (€/MWh)</b>	179.07	169.60	153.50	280.03	533.79	391.22	302.27
<b>Min.MCP (€/MWh)</b>	-10.01	-5.79	-3.92	-6.62	-7.05	69.99	20.36
	👉 1%	👇 -58%	👆 106%	👇 -27%	👆 47%	👇 -10%	👇 -34%
<b>Tot.Vol(GWh)</b>	6.04	2.55	5.24	3.81	5.61	5.07	3.34

### Trades by Order Type

Delivery Day		26.06	27.06	28.06	29.06	30.06	01.07	02.07	
<b>Ord Price Type</b>		<b>Sell &amp; Buy Trades in (GWh) per Price Type</b>							<b>(%)</b>
<b>PPT</b>	(S)	0.000	0.000	0.000	0.000	0.000	0.000	0.000	0.00%
<b>HBD</b>	(S)	2.829	1.036	1.770	1.804	2.790	2.505	0.758	45.36%
<b>BLK</b>	(S)	0.000	0.000	0.000	0.000	0.000	0.000	0.000	0.00%
<b>CPL</b>	(S)	0.189	0.238	0.850	0.102	0.016	0.031	0.913	54.64%
<b>PPT</b>	(B)	0.000	0.000	0.000	0.000	0.000	0.000	0.000	0.00%
<b>HBD</b>	(B)	1.613	1.053	1.728	1.323	1.229	1.733	1.294	77.47%
<b>BLK</b>	(B)	0.000	0.000	0.000	0.000	0.000	0.000	0.000	0.00%
<b>CPL</b>	(B)	1.405	0.222	0.892	0.582	1.577	0.803	0.376	22.53%
		<b>Sell &amp; Buy Orders Traded per Price Type</b>							<b>(%)</b>
<b>PPT</b>	(S)	0	0	0	0	0	0	0	0.00%
<b>HBD</b>	(S)	590	332	382	538	567	391	275	100.00%
<b>BLK</b>	(S)	0	0	0	0	0	0	0	0.00%
<b>PPT</b>	(B)	0	0	0	0	0	0	0	0.00%
<b>HBD</b>	(B)	478	502	522	479	300	563	513	100.00%
<b>BLK</b>	(B)	0	0	0	0	0	0	0	0.00%

- MCP** Market Clearing Price (€/MWh)
- PPT** Priority Price-Taking
- HBD** Hybrid
- BLK** Block
- CPL** Market Coupling Flow

### Trade's Volume Mix

	Sell - MWh	Buy - MWh	
<b>Lignite</b> (4.6%)	77	0	(0.0%)
<b>Crete Conv.</b> (0.0%)	0	0	(0.0%)
<b>Gas</b> (12.0%)	201	233	(14.0%)
<b>Hydro</b> (7.7%)	128	8	(0.5%)
<b>Imports</b> (54.6%)	913		
<b>RES</b> (10.5%)	176	394	(23.6%)
<b>Crete RES</b> (0.0%)	0	0	(0.0%)
<b>BESS</b> (0.0%)	0	0	(0.0%)
<b>HV Load</b> (0.1%)	1	0	(0.0%)
<b>MV Load</b> (1.8%)	30	125	(7.5%)
<b>LV Load</b> (8.6%)	144	444	(26.6%)
<b>Crete Load</b> (0.0%)	0	0	(0.0%)
<b>Pumping</b> (0.0%)	0	90	(5.4%)
<b>Exports</b>		376	(22.5%)
<b>Sys.Losses</b> (0.0%)	0	0	(0.0%)
<b>D/R Load</b> (0.0%)	0	0	(0.0%)

