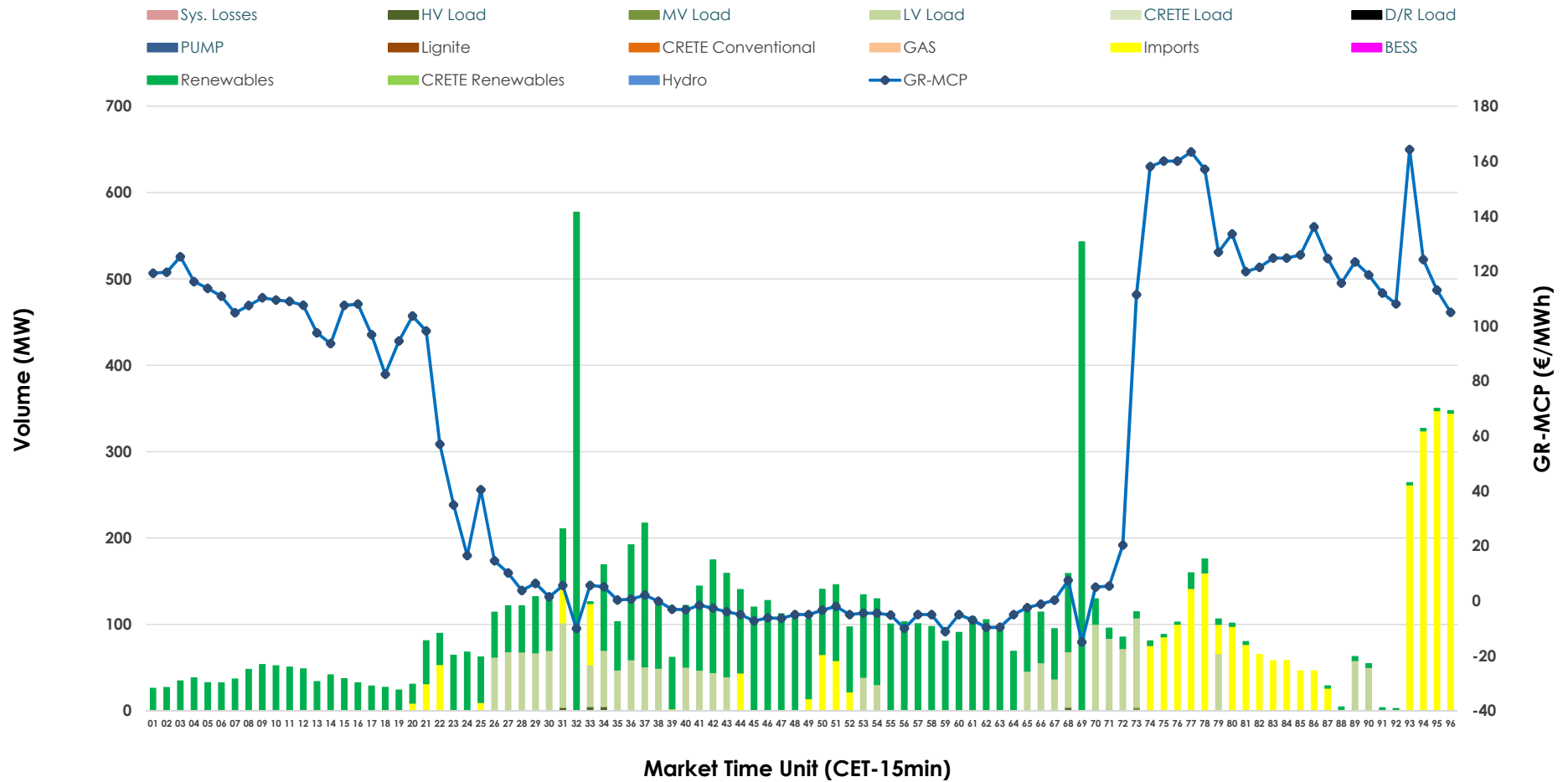


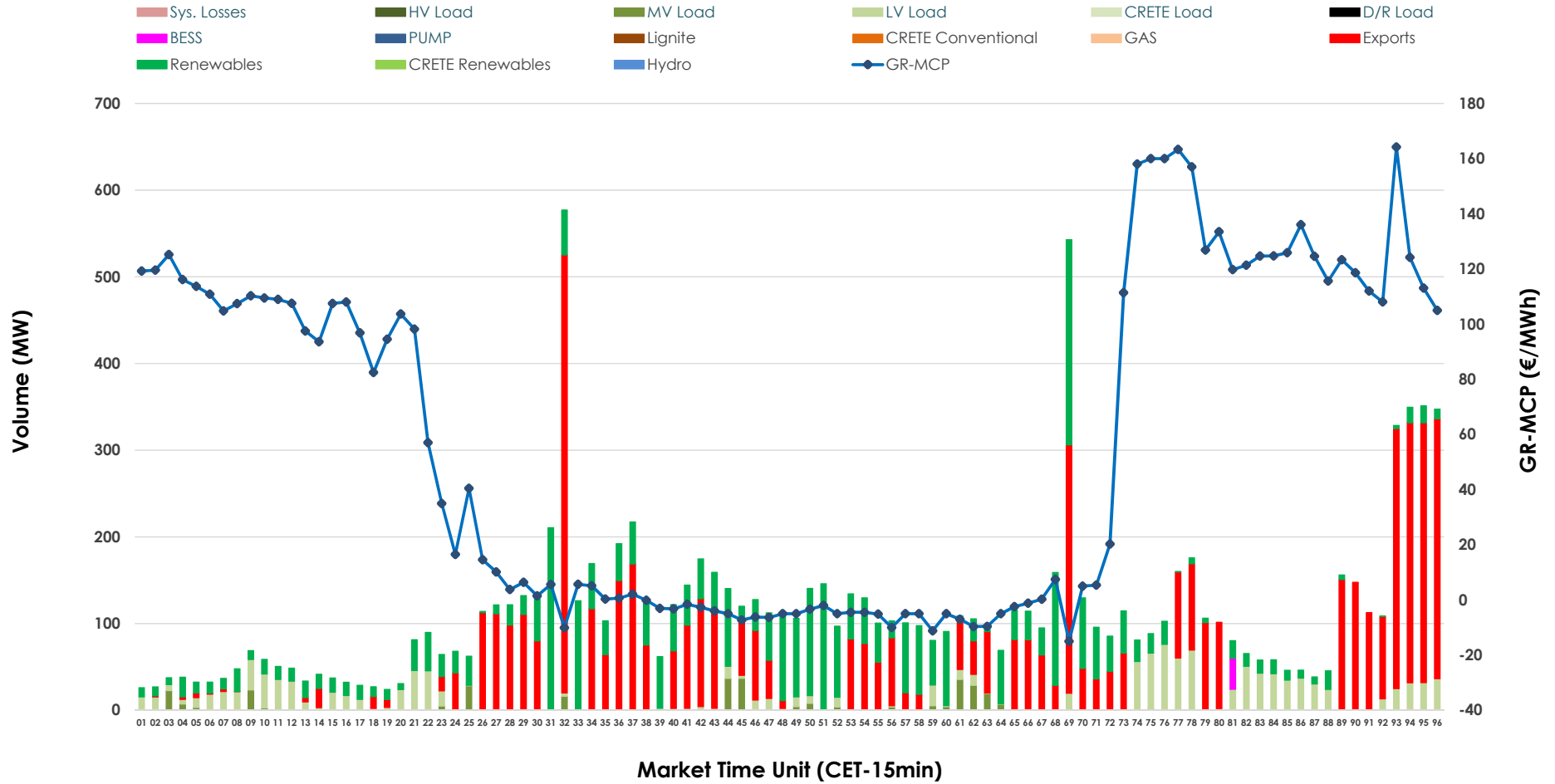


IDA '2' Market Outlook

14.06.2026 IDA '2' Market - Sell



14.06.2026 IDA '2' Market - Buy



GR Bidding Zone Weekly Figures

Delivery Day	08.06	09.06	10.06	11.06	12.06	13.06	14.06
	↑ 74%	↔ 18%	↓ -9%	↔ -2%	↑ 8%	↓ -56%	↔ 15%
Avg.MCP (€/MWh)	99.05	116.65	106.30	104.28	112.76	49.42	56.66
Max.MCP (€/MWh)	189.62	225.37	197.85	162.31	172.17	163.27	164.20
Min.MCP (€/MWh)	-1.00	-2.01	-5.84	25.13	65.03	-27.97	-15.01
	↔ -2%	↑ 50%	↔ 0%	↑ 75%	↓ -35%	↓ -40%	↑ 56%
Tot.Vol(GWh)	3.47	5.21	5.19	9.06	5.91	3.55	5.52

Trades by Order Type

Delivery Day		08.06	09.06	10.06	11.06	12.06	13.06	14.06	
Ord Price Type		Sell & Buy Trades in (GWh) per Price Type							(%)
PPT	(S)	0.000	0.000	0.000	0.000	0.000	0.000	0.000	0.00%
HBD	(S)	1.594	1.737	2.001	4.165	2.211	1.203	2.068	74.86%
BLK	(S)	0.000	0.000	0.000	0.000	0.000	0.000	0.000	0.00%
CPL	(S)	0.141	0.868	0.594	0.363	0.743	0.572	0.694	25.14%
PPT	(B)	0.000	0.000	0.000	0.000	0.000	0.000	0.000	0.00%
HBD	(B)	1.169	1.610	0.623	1.521	1.699	1.692	1.349	48.85%
BLK	(B)	0.000	0.000	0.000	0.000	0.000	0.000	0.000	0.00%
CPL	(B)	0.566	0.996	1.972	3.007	1.256	0.083	1.413	51.15%
		Sell & Buy Orders Traded per Price Type							(%)
PPT	(S)	0	0	0	0	0	0	0	0.00%
HBD	(S)	305	333	306	557	259	254	284	100.00%
BLK	(S)	0	0	0	0	0	0	0	0.00%
PPT	(B)	0	0	0	0	0	0	0	0.00%
HBD	(B)	448	428	344	505	425	356	355	100.00%
BLK	(B)	0	0	0	0	0	0	0	0.00%

- MCP** Market Clearing Price (€/MWh)
- PPT** Priority Price-Taking
- HBD** Hybrid
- BLK** Block
- CPL** Market Coupling Flow

Trade's Volume Mix

	Sell - MWh	Buy - MWh	
Lignite (0.0%)	0	0	(0.0%)
Crete Conv. (0.0%)	0	0	(0.0%)
Gas (0.0%)	0	0	(0.0%)
Hydro (0.0%)	0	0	(0.0%)
Imports (26.5%)	694		
RES (56.7%)	1,485	918	(33.2%)
Crete RES (0.0%)	0	0	(0.0%)
BESS (0.0%)	0	9	(0.3%)
HV Load (0.2%)	4	0	(0.0%)
MV Load (0.1%)	2	77	(2.8%)
LV Load (16.6%)	435	346	(12.5%)
Crete Load (0.0%)	0	0	(0.0%)
Pumping (0.0%)	0	0	(0.0%)
Exports		1,413	(51.2%)
Sys.Losses (0.0%)	0	0	(0.0%)
D/R Load (0.0%)	0	0	(0.0%)

