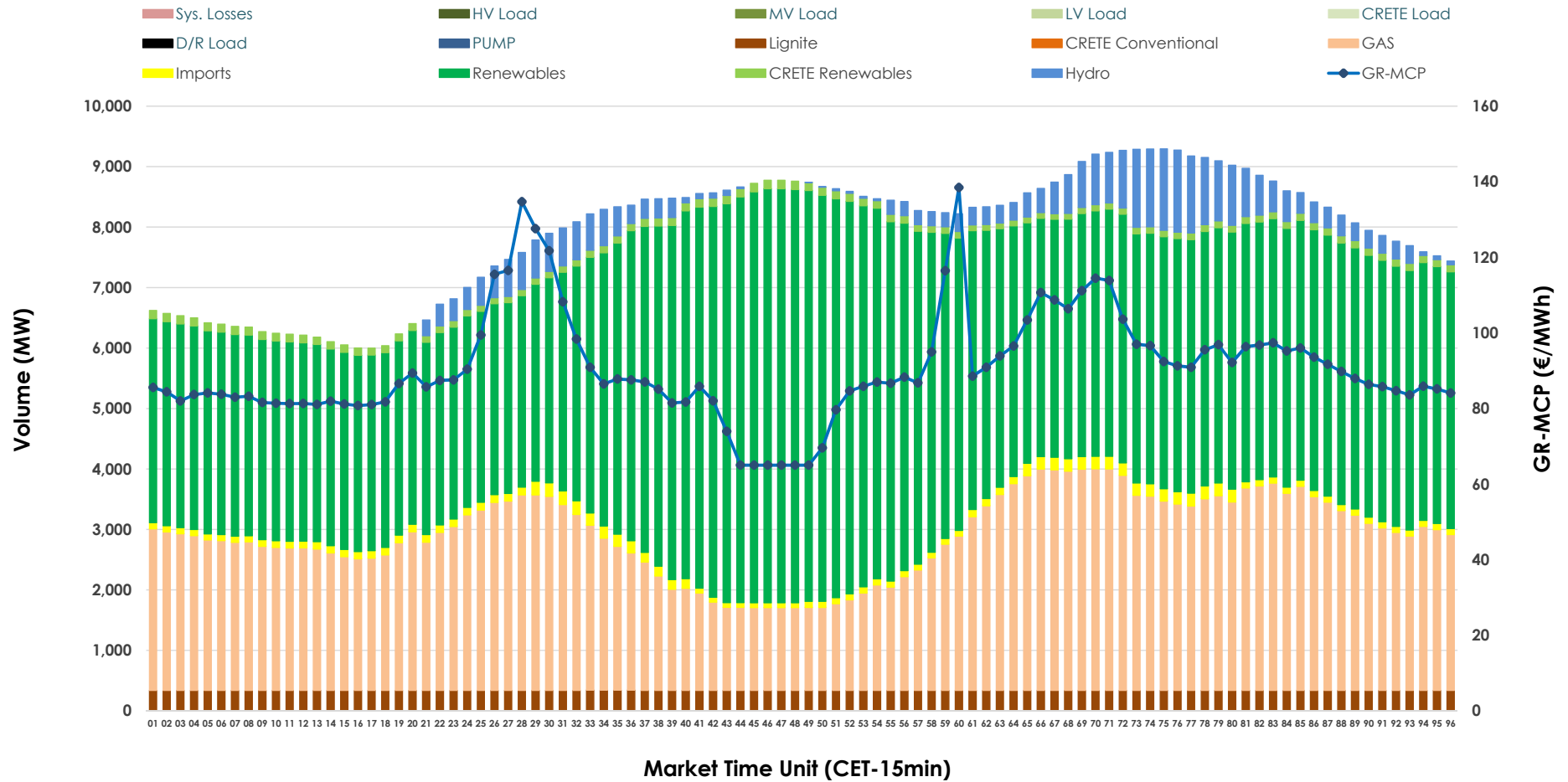


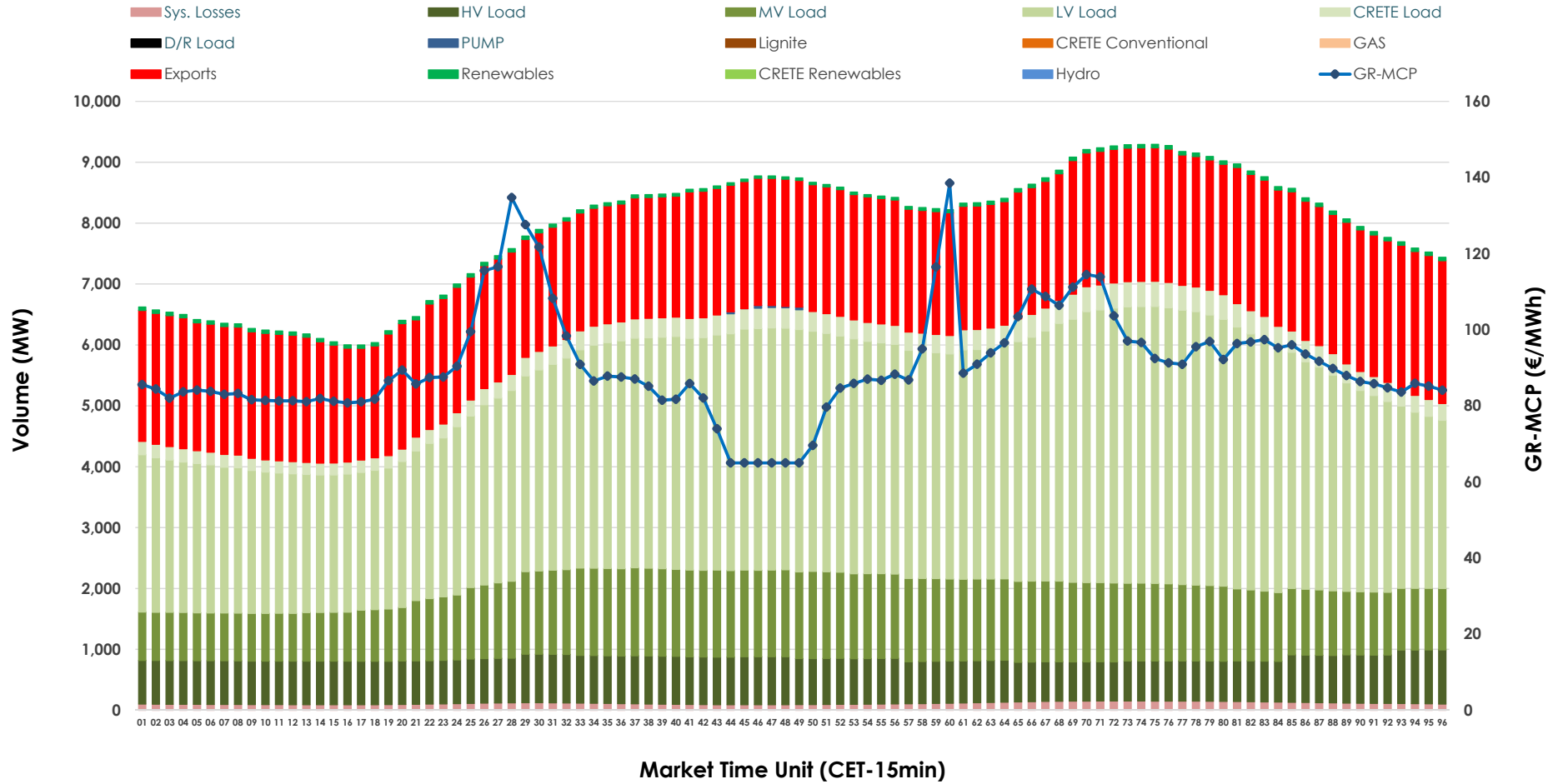


Day-Ahead Market Outlook

07.01.2026 Day-Ahead Market - Sell



07.01.2026 Day-Ahead Market - Buy



GR Bidding Zone Weekly Figures

Delivery Day	01.01	02.01	03.01	04.01	05.01	06.01	07.01
	📉 -21%	📈 19%	📉 -6%	📈 2%	📉 -19%	📈 16%	📈 6%
Avg.MCP (€/MWh)	79.44	94.59	89.27	90.93	73.73	85.48	90.70
Max.MCP (€/MWh)	140.47	125.85	114.95	123.30	108.12	98.60	138.50
Min.MCP (€/MWh)	10.23	26.67	74.94	60.00	0.01	41.75	65.00
	📉 -3%	📈 4%	📈 6%	📉 -5%	📉 -1%	📉 -5%	📈 12%
Tot.Vol(GWh)	348.40	362.87	383.02	363.66	358.93	339.82	380.65

Trades by Order Type

Delivery Day		01.01	02.01	03.01	04.01	05.01	06.01	07.01	
Ord Price Type		Sell & Buy Trades in (GWh) per Price Type							(%)
PPT	(S)	50.133	53.556	67.086	68.347	69.218	62.058	69.541	36.54%
HBD	(S)	66.925	69.516	77.856	73.611	68.330	66.621	76.608	40.25%
BLK	(S)	39.393	44.873	46.419	39.715	41.920	41.230	44.176	23.21%
CPL	(S)	17.750	13.493	0.150	0.156	0.000	0.000	0.000	0.00%
PPT	(B)	15.514	15.498	16.042	16.629	14.953	14.186	14.479	7.61%
HBD	(B)	146.526	152.286	143.346	130.882	136.915	125.726	136.354	71.64%
BLK	(B)	0.000	0.000	0.000	0.000	0.000	0.000	0.000	0.00%
CPL	(B)	12.161	13.653	32.122	34.319	27.600	29.997	39.492	20.75%
		Sell & Buy Orders Traded per Price Type							(%)
PPT	(S)	1345	1382	1356	1381	1408	1372	1426	32.93%
HBD	(S)	2590	2834	2742	2525	2371	2795	2885	66.61%
BLK	(S)	13	18	20	19	13	19	20	0.46%
PPT	(B)	2457	2370	2344	2484	2327	2309	2284	35.80%
HBD	(B)	4489	4132	4155	4106	4291	4113	4096	64.20%
BLK	(B)	0	0	0	0	0	0	0	0.00%

- MCP** Market Clearing Price (€/MWh)
- PPT** Priority Price-Taking
- HBD** Hybrid
- BLK** Block
- CPL** Market Coupling Flow

Trade's Volume Mix

		Sell - MWh	Buy - MWh	
Lignite	(4.2%)	8,080	0	(0.0%)
Crete Conv.	(0.0%)	0	0	(0.0%)
Gas	(32.7%)	62,171	0	(0.0%)
Hydro	(4.3%)	8,156	0	(0.0%)
Imports	(1.7%)	3,208		
RES	(55.6%)	105,889	1,228	(0.6%)
Crete RES	(1.5%)	2,821	0	(0.0%)
HV Load	(0.0%)	0	17,588	(9.2%)
MV Load	(0.0%)	0	28,323	(14.9%)
LV Load	(0.0%)	0	82,800	(43.5%)
Crete Load	(0.0%)	0	7,309	(3.8%)
Pumping	(0.0%)	0	44	(0.0%)
Exports			50,307	(26.4%)
Sys.Losses	(0.0%)	0	2,727	(1.4%)
D/R Load	(0.0%)	0	0	(0.0%)

