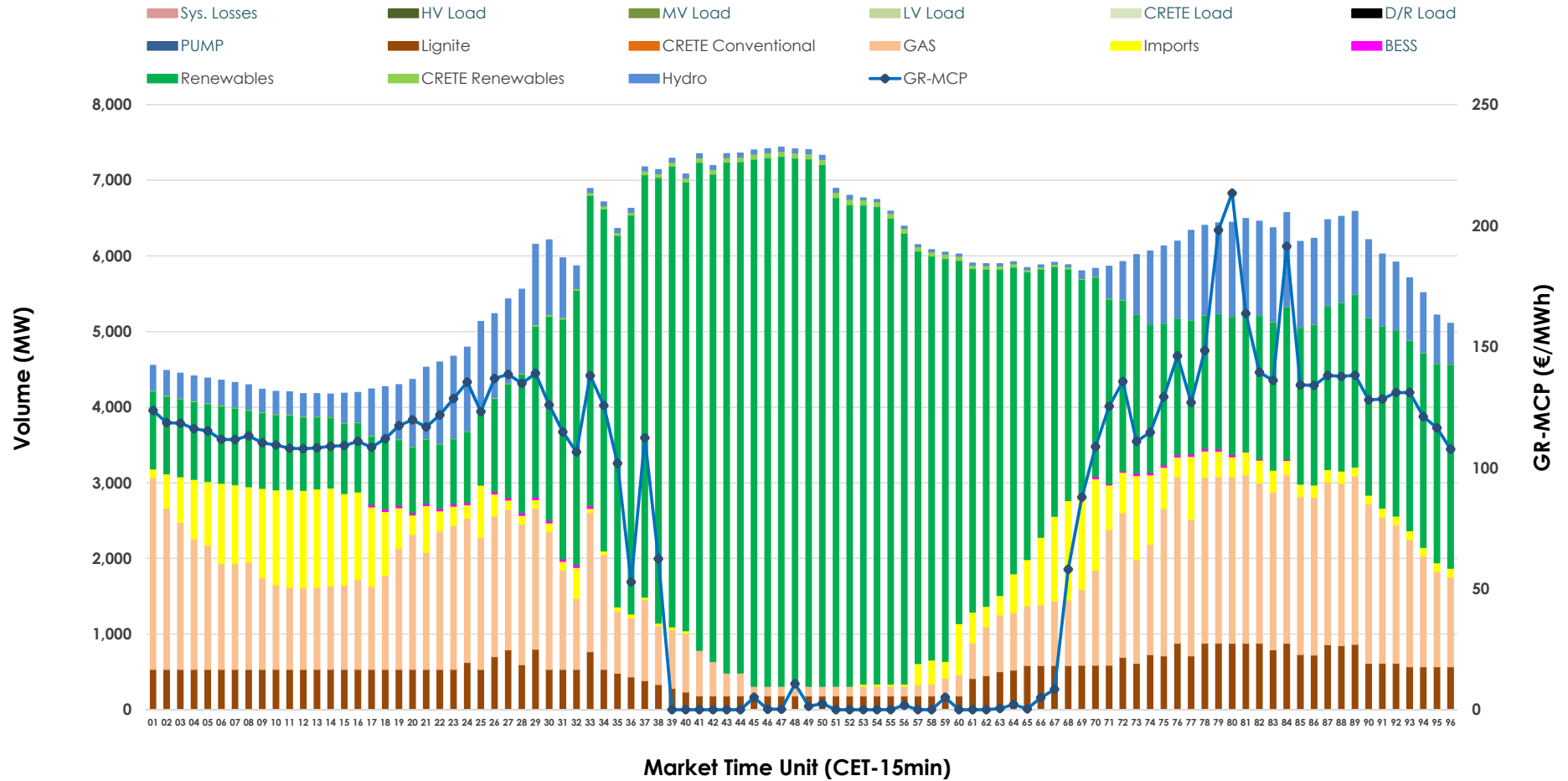


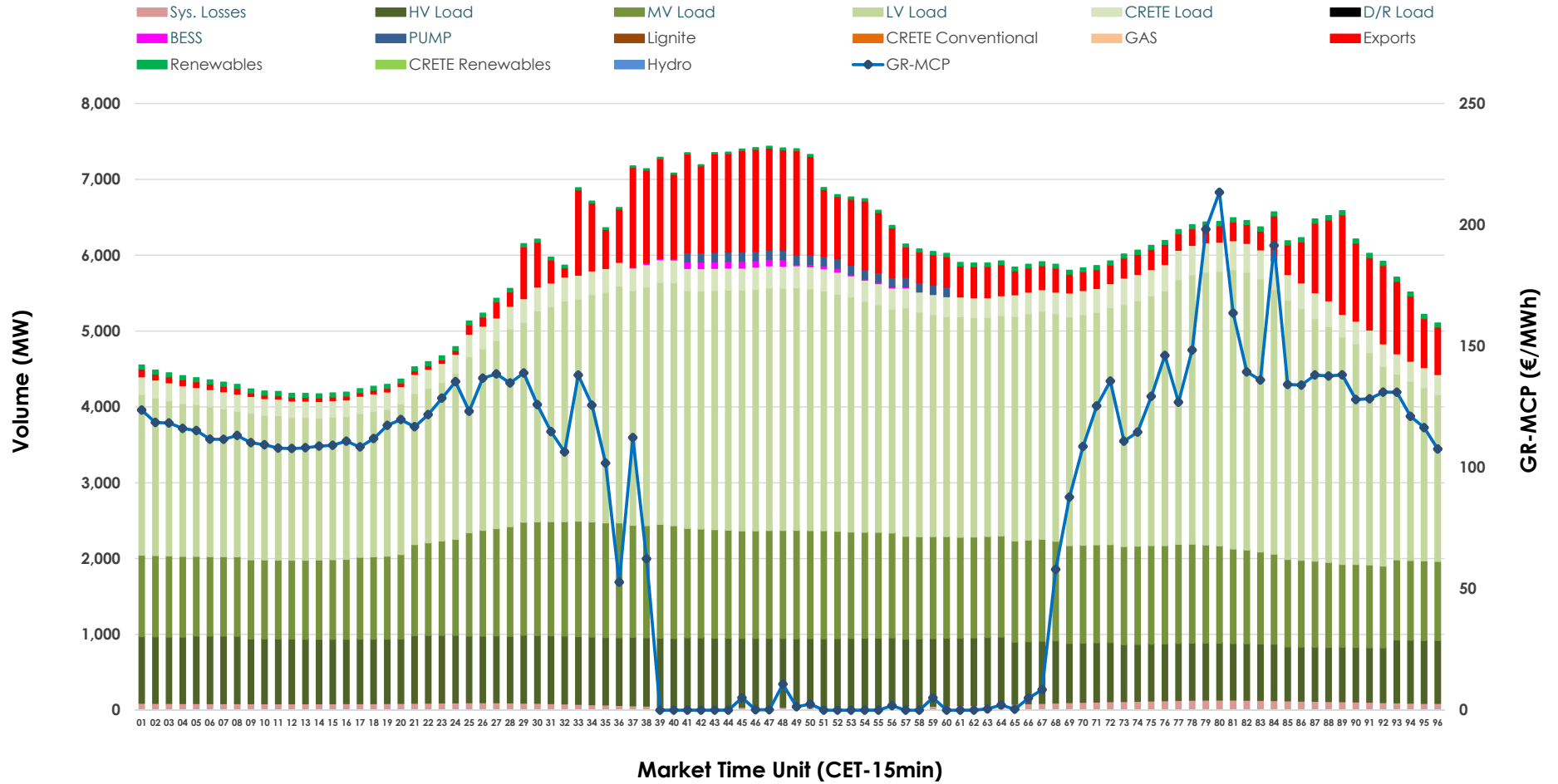


# Day-Ahead Market Outlook

## 30.04.2026 Day-Ahead Market - Sell



### 30.04.2026 Day-Ahead Market - Buy



### GR Bidding Zone Weekly Figures

Delivery Day	24.04	25.04	26.04	27.04	28.04	29.04	30.04
	👇 -13%	👇 -27%	👇 -12%	👆 64%	👇 -5%	👆 28%	👇 -11%
<b>Avg.MCP (€/MWh)</b>	76.59	55.72	48.85	80.06	75.66	97.01	86.43
<b>Max.MCP (€/MWh)</b>	232.13	186.45	137.70	221.32	195.51	223.89	213.40
<b>Min.MCP (€/MWh)</b>	-19.68	-50.00	-50.00	-2.01	-2.50	-0.01	0.01
	👇 -6%	👇 -10%	👇 -10%	👆 20%	👆 2%	👉 0%	👇 -2%
<b>Tot.Vol(GWh)</b>	289.22	259.84	232.86	278.90	285.73	285.20	280.87

### Trades by Order Type

Delivery Day		24.04	25.04	26.04	27.04	28.04	29.04	30.04	
Ord Price Type		Sell & Buy Trades in (GWh) per Price Type							(%)
<b>PPT</b>	(S)	58.112	61.249	48.107	58.220	56.503	50.135	49.397	35.17%
<b>HBD</b>	(S)	56.577	41.071	34.796	58.208	56.663	60.517	60.205	42.87%
<b>BLK</b>	(S)	26.900	16.577	15.757	22.261	29.032	31.075	23.319	16.60%
<b>CPL</b>	(S)	3.021	11.024	17.768	0.761	0.665	0.873	7.514	5.35%
<b>PPT</b>	(B)	12.315	12.979	12.240	13.139	12.556	12.132	12.191	8.68%
<b>HBD</b>	(B)	124.015	113.788	102.435	115.820	118.971	121.569	121.751	86.70%
<b>BLK</b>	(B)	0.000	0.000	0.000	0.000	0.000	0.000	0.000	0.00%
<b>CPL</b>	(B)	8.279	3.154	1.752	10.491	11.337	8.899	6.492	4.62%
		Sell & Buy Orders Traded per Price Type							(%)
<b>PPT</b>	(S)	1653	1549	1592	1641	1657	1691	1674	33.25%
<b>HBD</b>	(S)	2583	2261	2302	2690	2787	3191	3352	66.57%
<b>BLK</b>	(S)	15	8	6	11	13	15	9	0.18%
<b>PPT</b>	(B)	2275	2245	2258	2307	2293	2311	2265	35.11%
<b>HBD</b>	(B)	4111	4272	3997	3817	4129	4038	4187	64.89%
<b>BLK</b>	(B)	0	0	0	0	0	0	0	0.00%

**MCP** Market Clearing Price (€/MWh)  
**PPT** Priority Price-Taking  
**HBD** Hybrid  
**BLK** Block  
**CPL** Market Coupling Flow

### Trade's Volume Mix

		Sell - MWh	Buy - MWh	
<b>Lignite</b>	(8.8%)	12,394	0	(0.0%)
<b>Crete Conv.</b>	(0.0%)	0	0	(0.0%)
<b>Gas</b>	(21.3%)	29,945	0	(0.0%)
<b>Hydro</b>	(8.4%)	11,790	0	(0.0%)
<b>Imports</b>	(7.1%)	10,039		
<b>RES</b>	(53.7%)	75,397	1,054	(0.8%)
<b>Crete RES</b>	(0.5%)	644	0	(0.0%)
<b>BESS</b>	(0.2%)	227	243	(0.2%)
<b>HV Load</b>	(0.0%)	0	20,293	(14.5%)
<b>MV Load</b>	(0.0%)	0	30,517	(21.7%)
<b>LV Load</b>	(0.0%)	0	66,509	(47.4%)
<b>Crete Load</b>	(0.0%)	0	6,916	(4.9%)
<b>Pumping</b>	(0.0%)	0	625	(0.4%)
<b>Exports</b>			12,237	(8.7%)
<b>Sys.Losses</b>	(0.0%)	0	2,041	(1.5%)
<b>D/R Load</b>	(0.0%)	0	0	(0.0%)

