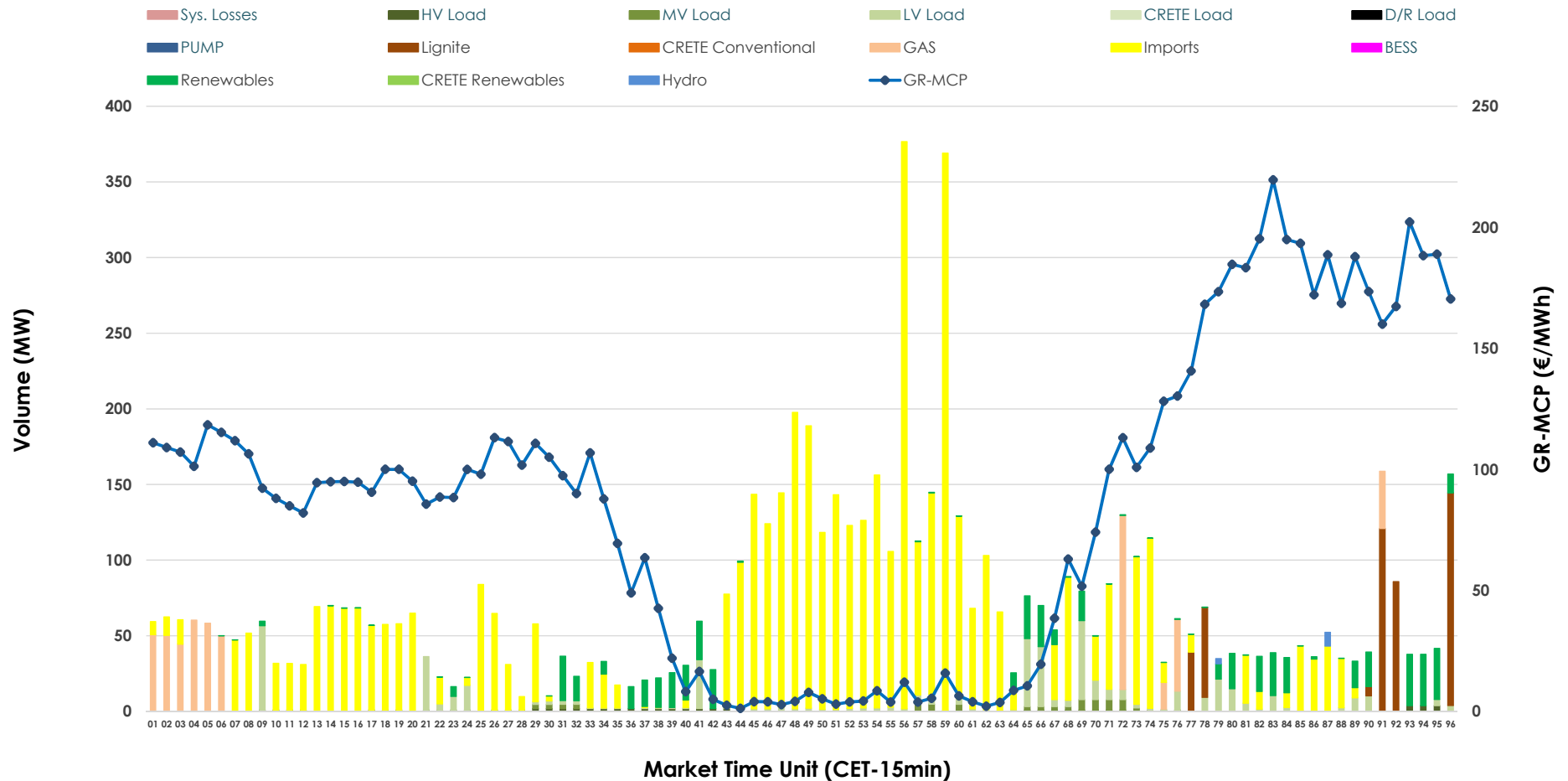


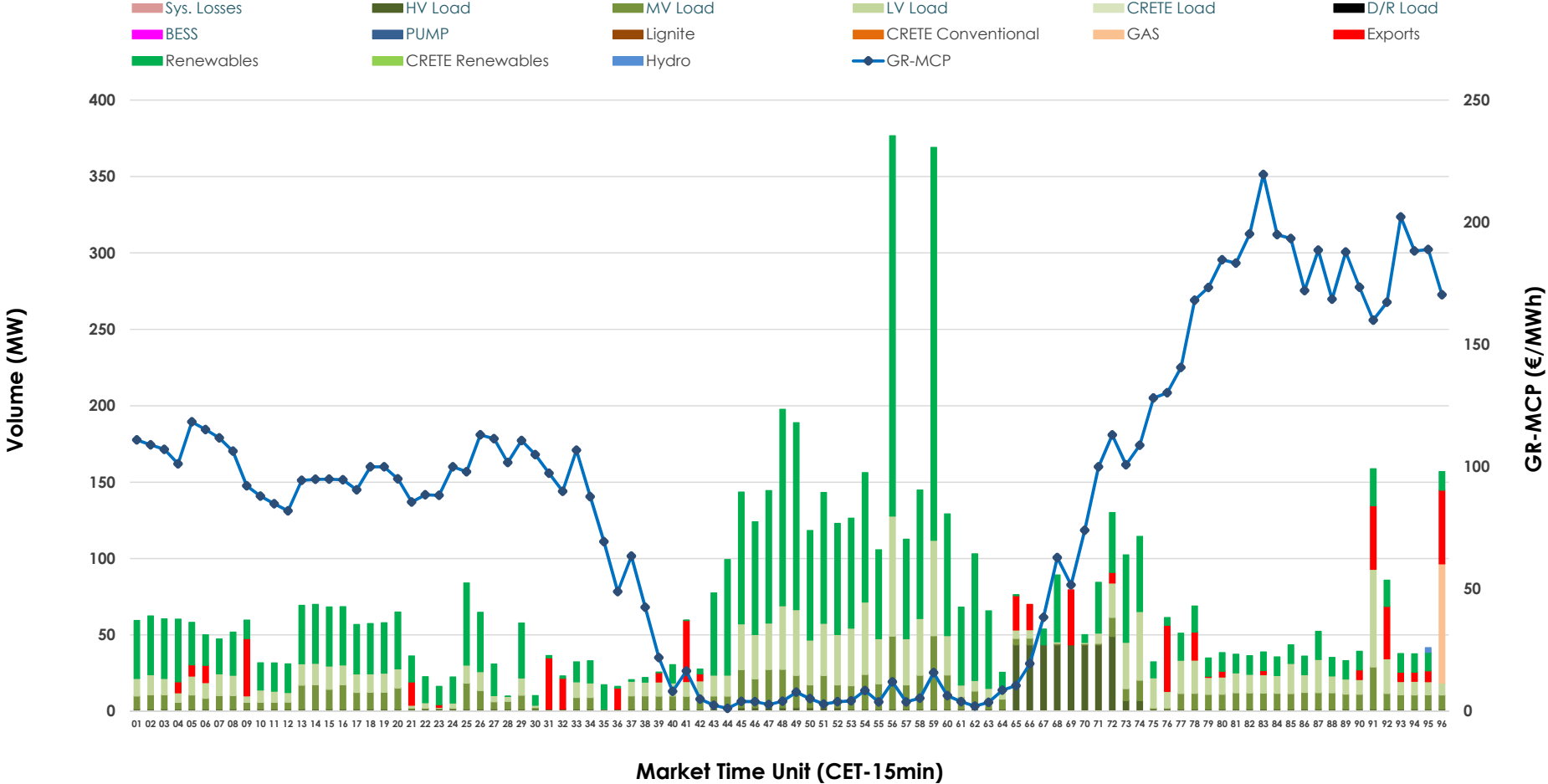


IDA '1' Market Outlook

04.06.2026 IDA '1' Market - Sell



04.06.2026 IDA '1' Market - Buy



GR Bidding Zone Weekly Figures

Delivery Day	29.05	30.05	31.05	01.06	02.06	03.06	04.06
	👇 -10%	👆 9%	👇 -4%	👆 13%	👇 -2%	👇 -12%	👆 4%
Avg.MCP (€/MWh)	81.26	88.77	85.50	96.84	95.04	83.58	86.77
Max.MCP (€/MWh)	166.41	210.27	159.21	184.62	173.10	154.37	219.59
Min.MCP (€/MWh)	-8.93	-9.10	-2.01	-5.61	-9.72	-10.09	1.23
	👆 6%	👇 -25%	👆 22%	👇 -4%	👇 -27%	👆 23%	👇 -34%
Tot.Vol(GWh)	6.77	5.07	6.19	5.96	4.35	5.34	3.50

Trades by Order Type

Delivery Day		29.05	30.05	31.05	01.06	02.06	03.06	04.06	
Ord Price Type		Sell & Buy Trades in (GWh) per Price Type							(%)
PPT	(S)	0.000	0.000	0.000	0.000	0.000	0.000	0.000	0.00%
HBD	(S)	3.383	2.016	1.792	2.320	1.893	2.333	0.551	31.45%
BLK	(S)	0.000	0.000	0.000	0.000	0.000	0.000	0.000	0.00%
CPL	(S)	0.000	0.518	1.305	0.658	0.280	0.338	1.200	68.55%
PPT	(B)	0.000	0.000	0.000	0.000	0.000	0.000	0.000	0.00%
HBD	(B)	3.383	2.118	2.374	2.610	1.808	1.998	1.626	92.88%
BLK	(B)	0.000	0.000	0.000	0.000	0.000	0.000	0.000	0.00%
CPL	(B)	0.000	0.415	0.722	0.367	0.365	0.673	0.125	7.12%
		Sell & Buy Orders Traded per Price Type							(%)
PPT	(S)	0	0	0	0	0	0	0	0.00%
HBD	(S)	267	305	243	201	123	466	216	100.00%
BLK	(S)	0	0	0	0	0	0	0	0.00%
PPT	(B)	0	0	0	0	0	0	0	0.00%
HBD	(B)	746	771	950	707	870	1055	850	100.00%
BLK	(B)	0	0	0	0	0	0	0	0.00%

- MCP** Market Clearing Price (€/MWh)
- PPT** Priority Price-Taking
- HBD** Hybrid
- BLK** Block
- CPL** Market Coupling Flow

Trade's Volume Mix

	Sell - MWh	Buy - MWh	
Lignite (6.4%)	113	0	(0.0%)
Crete Conv. (0.0%)	0	0	(0.0%)
Gas (7.6%)	133	20	(1.1%)
Hydro (0.2%)	3	1	(0.0%)
Imports (68.6%)	1,200		
RES (8.2%)	144	856	(48.9%)
Crete RES (0.0%)	0	0	(0.0%)
BESS (0.0%)	0	0	(0.0%)
HV Load (0.9%)	16	126	(7.2%)
MV Load (0.9%)	16	250	(14.3%)
LV Load (7.1%)	125	374	(21.3%)
Crete Load (0.0%)	0	0	(0.0%)
Pumping (0.0%)	0	0	(0.0%)
Exports		125	(7.1%)
Sys.Losses (0.0%)	0	0	(0.0%)
D/R Load (0.0%)	0	0	(0.0%)

