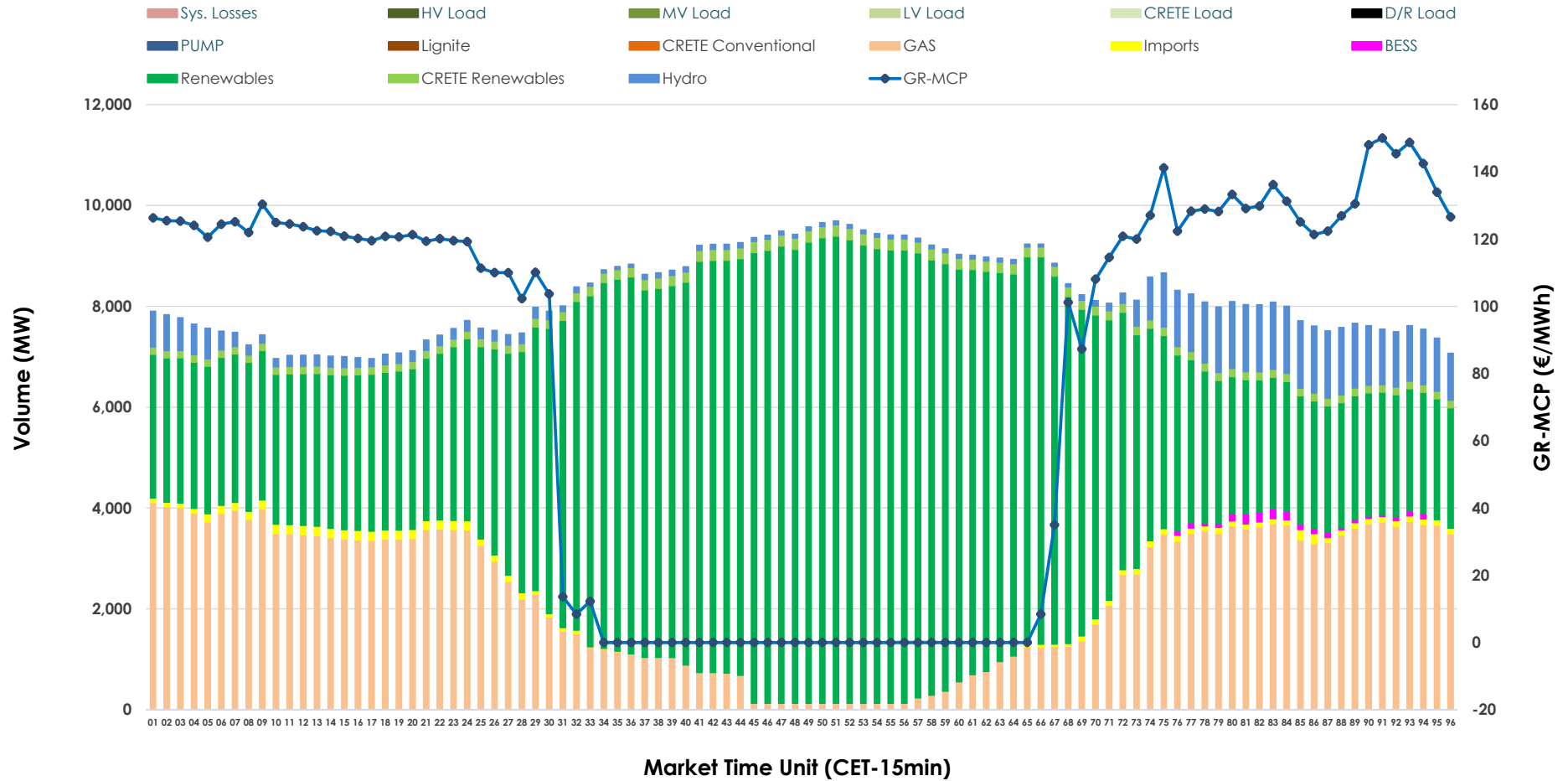


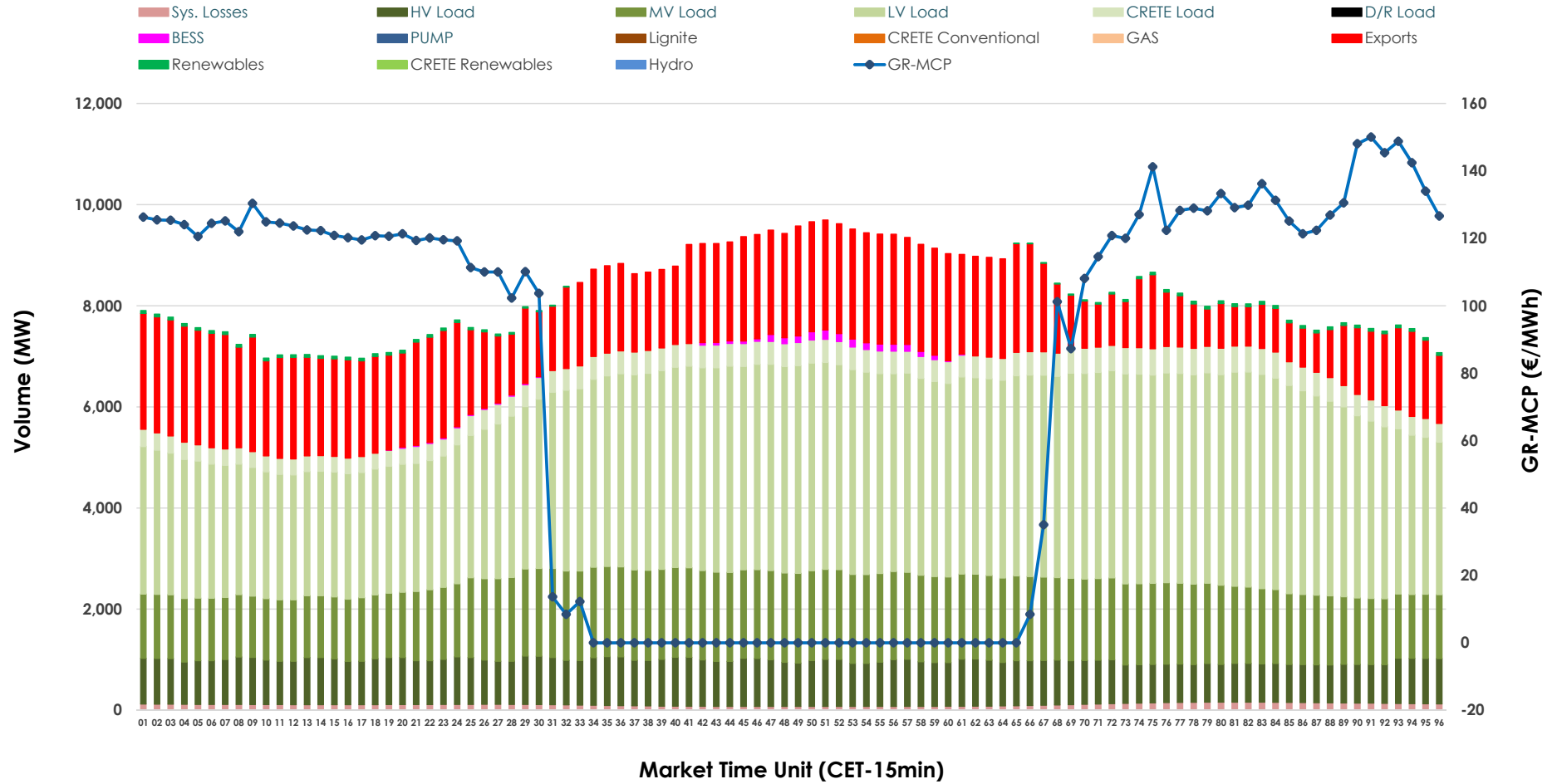


# Day-Ahead Market Outlook

## 19.06.2026 Day-Ahead Market - Sell



### 19.06.2026 Day-Ahead Market - Buy



### GR Bidding Zone Weekly Figures

Delivery Day	13.06	14.06	15.06	16.06	17.06	18.06	19.06
	↓ -57%	↔ 20%	↑ 45%	↔ 16%	↔ 18%	↓ -36%	↔ 0%
<b>Avg.MCP (€/MWh)</b>	49.69	59.78	86.75	100.92	119.31	76.83	76.84
<b>Max.MCP (€/MWh)</b>	169.10	175.01	180.14	172.17	185.46	170.45	150.05
<b>Min.MCP (€/MWh)</b>	-34.00	-10.00	0.00	15.33	36.53	-0.01	-0.01
	↘ -11%	↘ -10%	↔ 24%	↔ 2%	↔ 0%	↔ 15%	↔ 1%
<b>Tot.Vol(GWh)</b>	297.06	268.05	331.94	339.97	340.24	391.22	394.14

### Trades by Order Type

Delivery Day		13.06	14.06	15.06	16.06	17.06	18.06	19.06	
<b>Ord Price Type</b>		<b>Sell &amp; Buy Trades in (GWh) per Price Type</b>							<b>(%)</b>
<b>PPT</b>	(S)	68.037	56.168	56.785	55.273	57.588	76.033	82.897	42.07%
<b>HBD</b>	(S)	57.846	50.363	71.647	71.874	69.566	86.738	84.108	42.68%
<b>BLK</b>	(S)	14.016	16.742	27.719	33.076	33.077	32.840	30.010	15.23%
<b>CPL</b>	(S)	8.628	10.751	9.821	9.764	9.890	0.000	0.053	0.03%
<b>PPT</b>	(B)	16.499	15.914	16.480	16.485	16.785	16.742	17.703	8.98%
<b>HBD</b>	(B)	123.659	113.815	134.034	146.696	146.808	152.368	152.606	77.44%
<b>BLK</b>	(B)	0.000	0.000	0.000	0.000	0.000	0.000	0.000	0.00%
<b>CPL</b>	(B)	8.370	4.295	15.459	6.806	6.527	26.501	26.758	13.58%
		<b>Sell &amp; Buy Orders Traded per Price Type</b>							<b>(%)</b>
<b>PPT</b>	(S)	1583	1528	1498	1584	1618	1634	1607	32.48%
<b>HBD</b>	(S)	2561	2705	3465	3701	3804	3357	3327	67.24%
<b>BLK</b>	(S)	8	13	14	14	10	11	14	0.28%
<b>PPT</b>	(B)	2406	2364	2351	2347	2351	2371	2411	37.36%
<b>HBD</b>	(B)	4001	3902	3805	3818	3769	3993	4043	62.64%
<b>BLK</b>	(B)	0	0	0	0	0	0	0	0.00%

**MCP** Market Clearing Price (€/MWh)  
**PPT** Priority Price-Taking  
**HBD** Hybrid  
**BLK** Block  
**CPL** Market Coupling Flow

### Trade's Volume Mix

		Sell - MWh	Buy - MWh	
<b>Lignite</b>	(0.0%)	0	0	(0.0%)
<b>Crete Conv.</b>	(0.0%)	0	0	(0.0%)
<b>Gas</b>	(27.9%)	55,080	0	(0.0%)
<b>Hydro</b>	(5.1%)	10,107	0	(0.0%)
<b>Imports</b>	(1.0%)	2,037		
<b>RES</b>	(63.5%)	125,089	730	(0.4%)
<b>Crete RES</b>	(2.2%)	4,246	0	(0.0%)
<b>BESS</b>	(0.3%)	509	577	(0.3%)
<b>HV Load</b>	(0.0%)	0	20,915	(10.6%)
<b>MV Load</b>	(0.0%)	0	36,913	(18.7%)
<b>LV Load</b>	(0.0%)	0	84,791	(43.0%)
<b>Crete Load</b>	(0.0%)	0	10,108	(5.1%)
<b>Pumping</b>	(0.0%)	0	0	(0.0%)
<b>Exports</b>			40,387	(20.5%)
<b>Sys.Losses</b>	(0.0%)	0	2,647	(1.3%)
<b>D/R Load</b>	(0.0%)	0	0	(0.0%)

