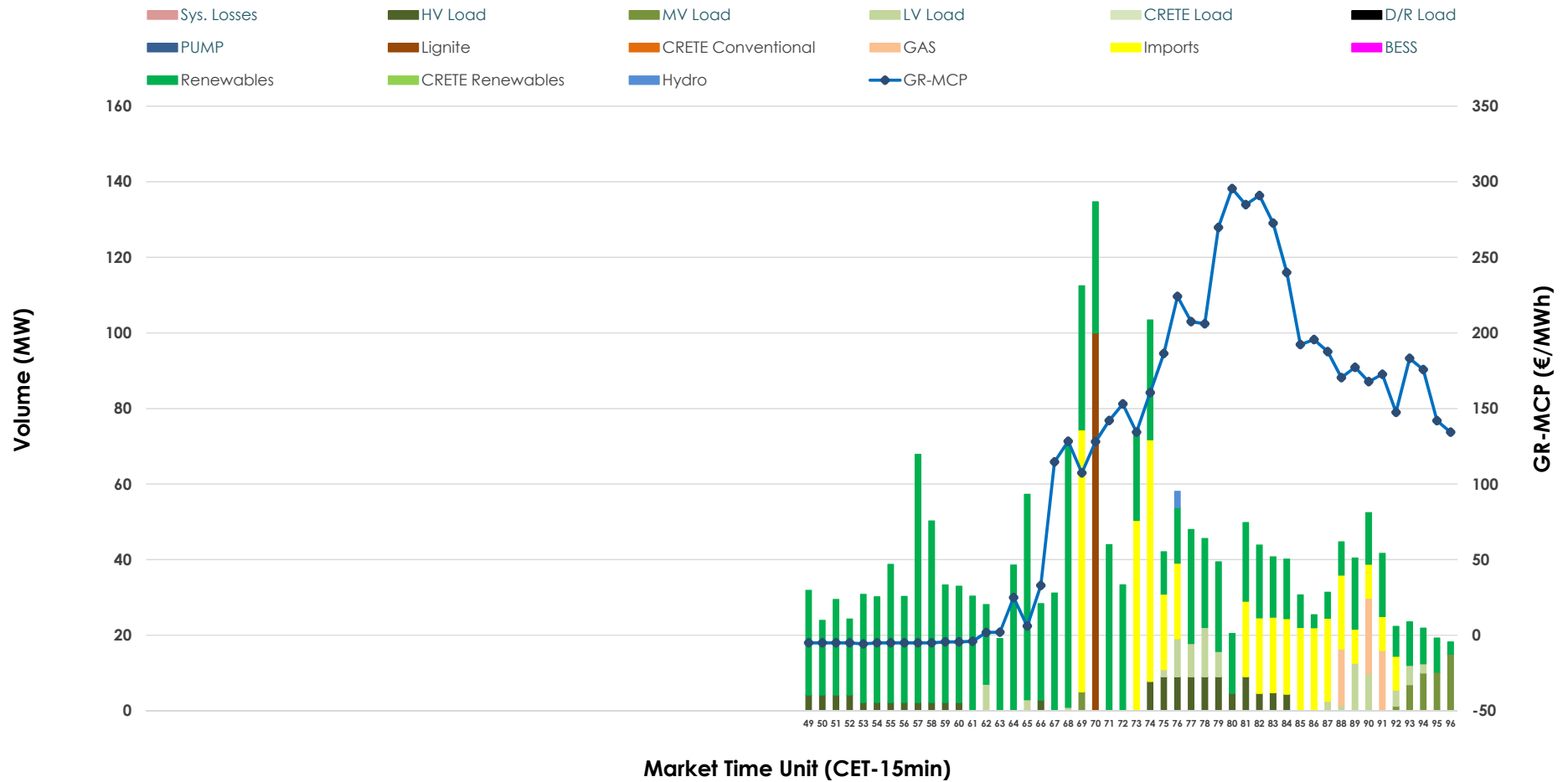


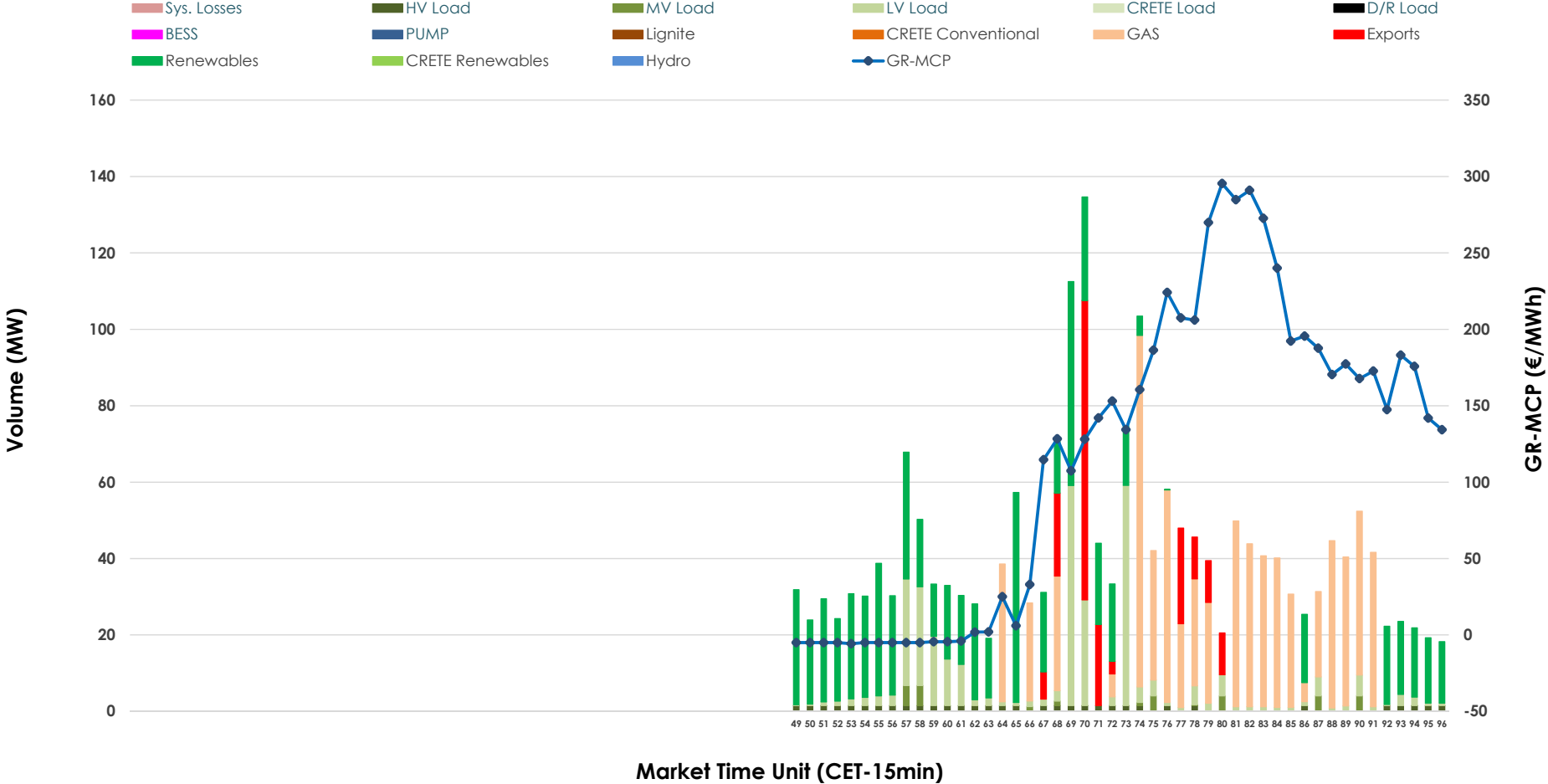


IDA '3' Market Outlook

05.05.2026 IDA '3' Market - Sell



05.05.2026 IDA '3' Market - Buy



GR Bidding Zone Weekly Figures

Delivery Day	29.04	30.04	01.05	02.05	03.05	04.05	05.05
	↑ 50%	↓ -26%	↓ -28%	↑ 22%	↓ -1%	↑ 80%	↓ -5%
Avg.MCP (€/MWh)	105.43	78.43	56.53	68.99	68.12	122.88	116.60
Max.MCP (€/MWh)	233.89	193.40	184.92	172.68	167.98	306.49	295.47
Min.MCP (€/MWh)	-4.58	0.39	-12.84	-56.03	-16.76	-16.16	-5.71
	↑ 92%	↓ -44%	↓ -13%	↑ 62%	→ 0%	↓ -8%	↓ -54%
Tot.Vol(GWh)	3.03	1.70	1.49	2.41	2.40	2.21	1.01

Trades by Order Type

Delivery Day		29.04	30.04	01.05	02.05	03.05	04.05	05.05	
Ord Price Type		Sell & Buy Trades in (GWh) per Price Type							(%)
PPT	(S)	0.000	0.000	0.000	0.000	0.000	0.000	0.000	0.00%
HBD	(S)	0.910	0.841	0.744	0.889	1.114	0.625	0.401	79.04%
BLK	(S)	0.000	0.000	0.000	0.000	0.000	0.000	0.000	0.00%
CPL	(S)	0.607	0.011	0.000	0.313	0.086	0.483	0.106	20.96%
PPT	(B)	0.000	0.000	0.000	0.000	0.000	0.000	0.000	0.00%
HBD	(B)	1.492	0.434	0.256	0.941	0.667	1.107	0.460	90.67%
BLK	(B)	0.000	0.000	0.000	0.000	0.000	0.000	0.000	0.00%
CPL	(B)	0.025	0.418	0.488	0.261	0.534	0.000	0.047	9.33%
		Sell & Buy Orders Traded per Price Type							(%)
PPT	(S)	0	0	0	0	0	0	0	0.00%
HBD	(S)	230	233	183	166	149	192	115	100.00%
BLK	(S)	0	0	0	0	0	0	0	0.00%
PPT	(B)	0	0	0	0	0	0	0	0.00%
HBD	(B)	178	124	88	157	94	179	211	100.00%
BLK	(B)	0	0	0	0	0	0	0	0.00%

- MCP** Market Clearing Price (€/MWh)
- PPT** Priority Price-Taking
- HBD** Hybrid
- BLK** Block
- CPL** Market Coupling Flow

Trade's Volume Mix

	Sell - MWh	Buy - MWh	
Lignite (4.9%)	25	0	(0.0%)
Crete Conv. (0.0%)	0	0	(0.0%)
Gas (2.5%)	13	187	(36.9%)
Hydro (0.2%)	1	0	(0.0%)
Imports (21.0%)	106		
RES (58.8%)	298	175	(34.4%)
Crete RES (0.0%)	0	0	(0.0%)
BESS (0.0%)	0	0	(0.0%)
HV Load (5.8%)	29	12	(2.4%)
MV Load (2.4%)	12	8	(1.6%)
LV Load (4.4%)	22	78	(15.4%)
Crete Load (0.0%)	0	0	(0.0%)
Pumping (0.0%)	0	0	(0.0%)
Exports		47	(9.3%)
Sys.Losses (0.0%)	0	0	(0.0%)
D/R Load (0.0%)	0	0	(0.0%)

