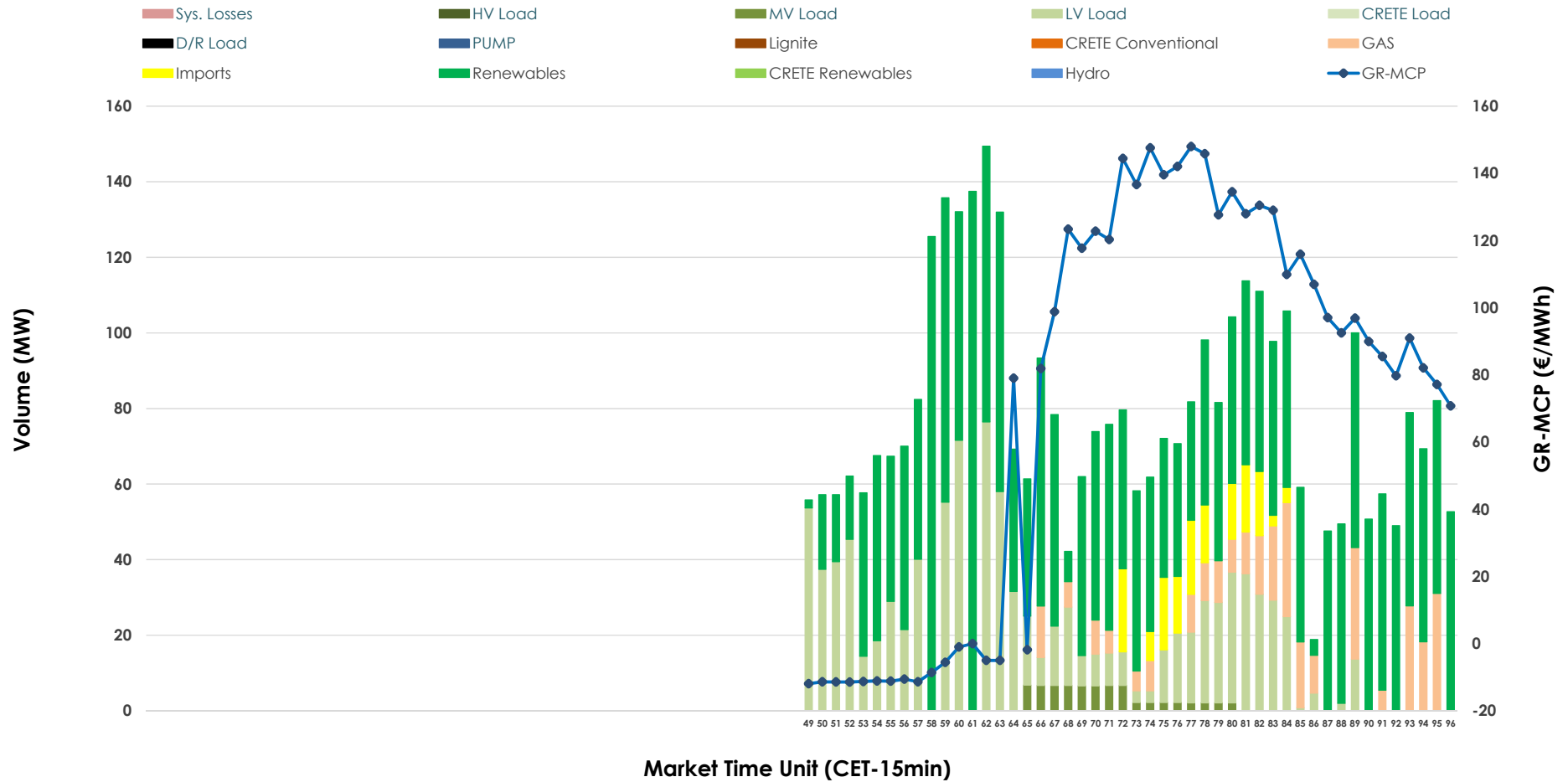


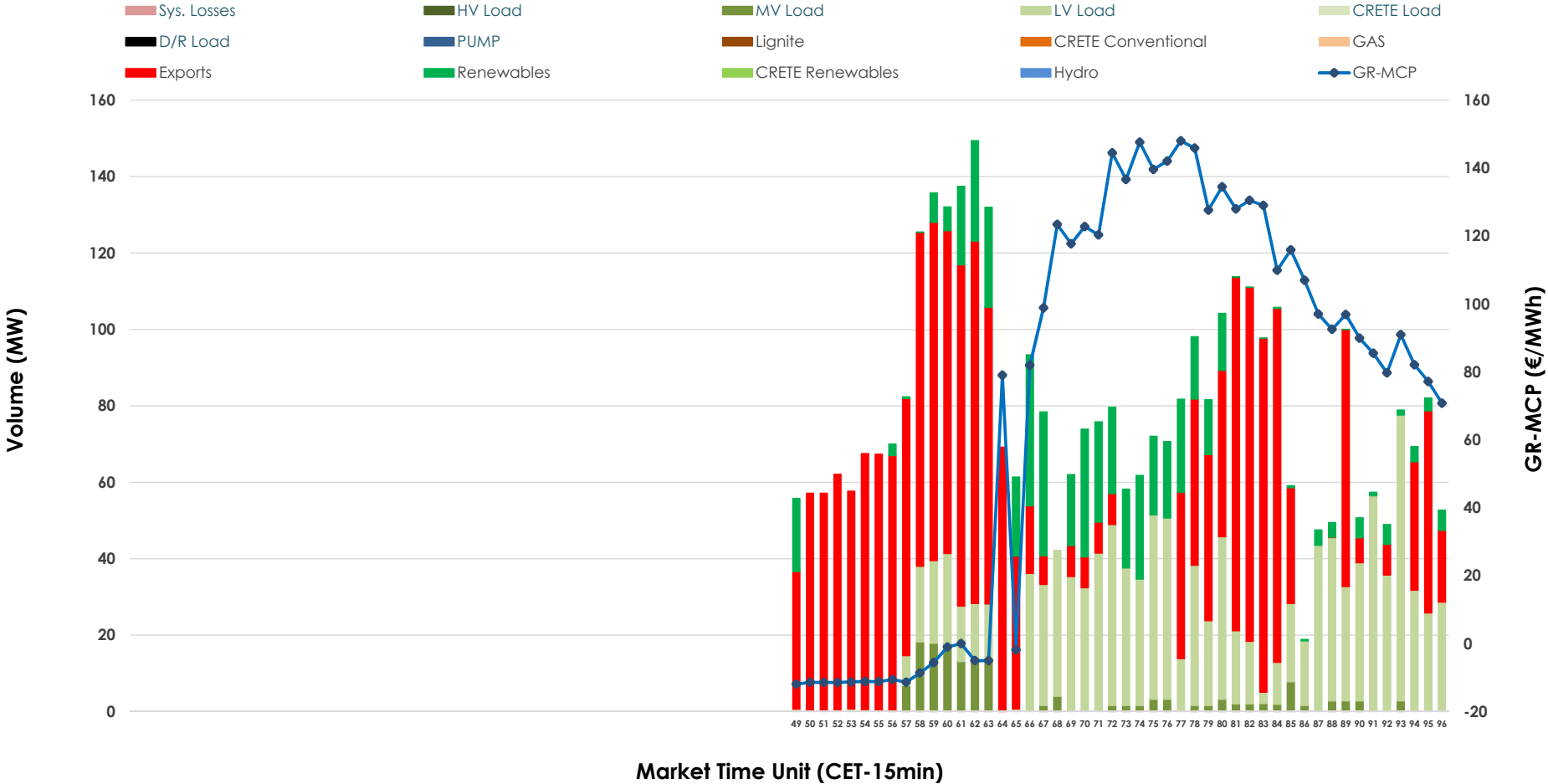


# IDA '3' Market Outlook

25.02.2026 IDA '3' Market - Sell



### 25.02.2026 IDA '3' Market - Buy



### GR Bidding Zone Weekly Figures

Delivery Day	19.02	20.02	21.02	22.02	23.02	24.02	25.02
	↗ 5%	↗ 3%	→ 0%	↓ -33%	↑ 51%	↗ 1%	→ -1%
<b>Avg.MCP (€/MWh)</b>	69.73	71.55	71.42	47.58	71.88	72.70	72.18
<b>Max.MCP (€/MWh)</b>	153.38	126.38	112.00	109.84	141.90	133.89	148.00
<b>Min.MCP (€/MWh)</b>	-35.00	-8.73	-19.99	-20.00	-16.48	-3.93	-11.92
	↗ 25%	↗ 4%	↓ -55%	↑ 43%	↘ -2%	↑ 34%	↘ -3%
<b>Tot.Vol(GWh)</b>	2.20	2.30	1.04	1.49	1.46	1.96	1.90

### Trades by Order Type

Delivery Day		19.02	20.02	21.02	22.02	23.02	24.02	25.02	
<b>Ord Price Type</b>		<b>Sell &amp; Buy Trades in (GWh) per Price Type</b>							<b>(%)</b>
<b>PPT</b>	(S)	0.000	0.000	0.000	0.000	0.000	0.000	0.000	0.00%
<b>HBD</b>	(S)	0.312	0.979	0.440	0.465	0.230	0.961	0.910	95.91%
<b>BLK</b>	(S)	0.000	0.000	0.000	0.000	0.000	0.000	0.000	0.00%
<b>CPL</b>	(S)	0.789	0.169	0.082	0.280	0.502	0.018	0.039	4.09%
<b>PPT</b>	(B)	0.000	0.000	0.000	0.000	0.000	0.000	0.000	0.00%
<b>HBD</b>	(B)	0.877	1.098	0.439	0.683	0.713	0.469	0.452	47.65%
<b>BLK</b>	(B)	0.000	0.000	0.000	0.000	0.000	0.000	0.000	0.00%
<b>CPL</b>	(B)	0.224	0.051	0.083	0.062	0.018	0.509	0.497	52.35%
		<b>Sell &amp; Buy Orders Traded per Price Type</b>							<b>(%)</b>
<b>PPT</b>	(S)	0	0	0	0	0	0	0	0.00%
<b>HBD</b>	(S)	76	215	145	109	209	163	149	100.00%
<b>BLK</b>	(S)	0	0	0	0	0	0	0	0.00%
<b>PPT</b>	(B)	0	0	0	0	0	0	0	0.00%
<b>HBD</b>	(B)	226	286	225	269	216	236	136	100.00%
<b>BLK</b>	(B)	0	0	0	0	0	0	0	0.00%

**MCP** Market Clearing Price (€/MWh)  
**PPT** Priority Price-Taking  
**HBD** Hybrid  
**BLK** Block  
**CPL** Market Coupling Flow

### Trade's Volume Mix

		Sell - MWh	Buy - MWh	
<b>Lignite</b>	(0.0%)	0	0	(0.0%)
<b>Crete Conv.</b>	(0.0%)	0	0	(0.0%)
<b>Gas</b>	(8.0%)	76	0	(0.0%)
<b>Hydro</b>	(0.0%)	0	0	(0.0%)
<b>Imports</b>	(4.1%)	39		
<b>RES</b>	(60.3%)	573	125	(13.2%)
<b>Crete RES</b>	(0.0%)	0	0	(0.0%)
<b>HV Load</b>	(0.0%)	0	0	(0.0%)
<b>MV Load</b>	(1.9%)	18	38	(4.0%)
<b>LV Load</b>	(25.7%)	244	289	(30.5%)
<b>Crete Load</b>	(0.0%)	0	0	(0.0%)
<b>Pumping</b>	(0.0%)	0	0	(0.0%)
<b>Exports</b>			497	(52.3%)
<b>Sys.Losses</b>	(0.0%)	0	0	(0.0%)
<b>D/R Load</b>	(0.0%)	0	0	(0.0%)

