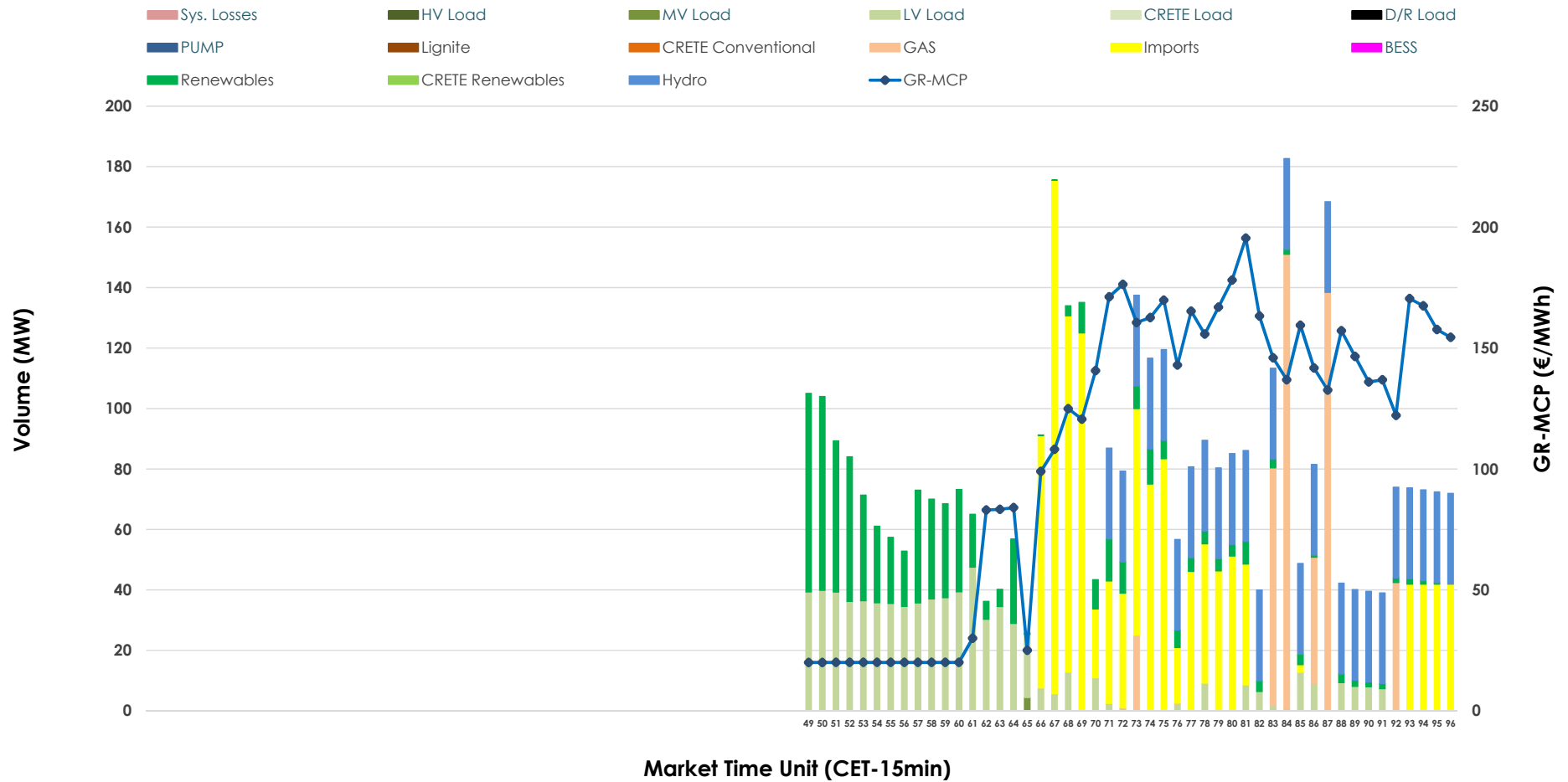


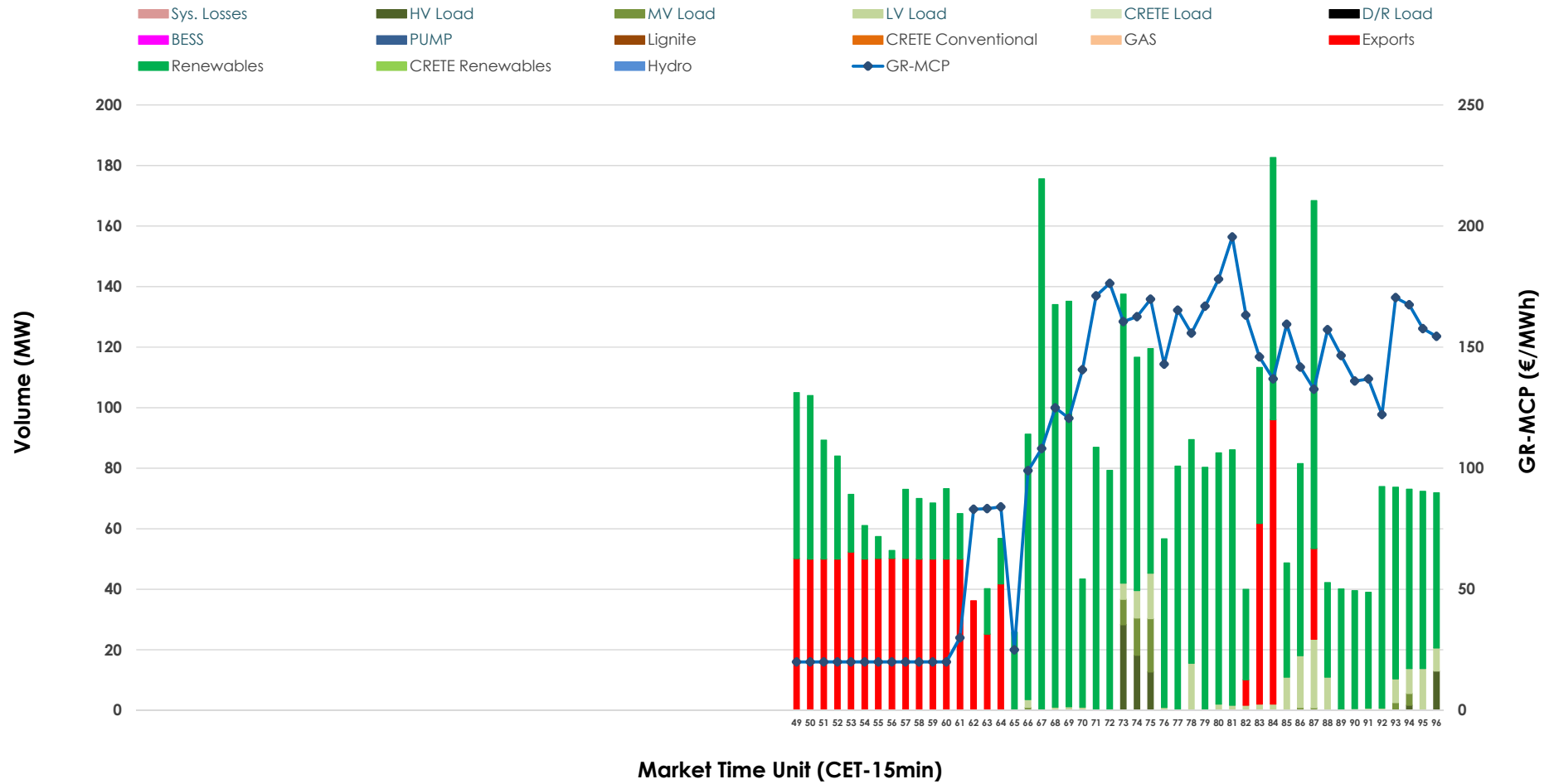


# IDA '3' Market Outlook

11.05.2026 IDA '3' Market - Sell



### 11.05.2026 IDA '3' Market - Buy



### GR Bidding Zone Weekly Figures

Delivery Day	05.05	06.05	07.05	08.05	09.05	10.05	11.05
	👇 -5%	👇 -12%	👆 22%	👇 -3%	👇 -24%	👇 -5%	👆 24%
<b>Avg.MCP (€/MWh)</b>	116.60	102.41	124.57	120.81	91.75	87.28	108.59
<b>Max.MCP (€/MWh)</b>	295.47	203.55	174.56	163.91	183.81	163.81	195.45
<b>Min.MCP (€/MWh)</b>	-5.71	-8.92	100.57	70.07	-5.00	4.99	20.00
	👇 -54%	👆 56%	👆 54%	👇 -43%	👇 -21%	👆 2%	👆 73%
<b>Tot.Vol(GWh)</b>	1.01	1.58	2.43	1.39	1.10	1.13	1.95

### Trades by Order Type

Delivery Day		05.05	06.05	07.05	08.05	09.05	10.05	11.05	
<b>Ord Price Type</b>		<b>Sell &amp; Buy Trades in (GWh) per Price Type</b>							<b>(%)</b>
<b>PPT</b>	(S)	0.000	0.000	0.000	0.000	0.000	0.000	0.000	0.00%
<b>HBD</b>	(S)	0.401	0.529	0.750	0.592	0.537	0.502	0.661	67.90%
<b>BLK</b>	(S)	0.000	0.000	0.000	0.000	0.000	0.000	0.000	0.00%
<b>CPL</b>	(S)	0.106	0.261	0.465	0.103	0.013	0.062	0.312	32.10%
<b>PPT</b>	(B)	0.000	0.000	0.000	0.000	0.000	0.000	0.000	0.00%
<b>HBD</b>	(B)	0.460	0.761	0.929	0.466	0.543	0.531	0.736	75.65%
<b>BLK</b>	(B)	0.000	0.000	0.000	0.000	0.000	0.000	0.000	0.00%
<b>CPL</b>	(B)	0.047	0.029	0.286	0.229	0.007	0.033	0.237	24.35%
		<b>Sell &amp; Buy Orders Traded per Price Type</b>							<b>(%)</b>
<b>PPT</b>	(S)	0	0	0	0	0	0	0	0.00%
<b>HBD</b>	(S)	115	100	163	164	105	204	203	100.00%
<b>BLK</b>	(S)	0	0	0	0	0	0	0	0.00%
<b>PPT</b>	(B)	0	0	0	0	0	0	0	0.00%
<b>HBD</b>	(B)	211	154	223	198	261	169	135	100.00%
<b>BLK</b>	(B)	0	0	0	0	0	0	0	0.00%

- MCP** Market Clearing Price (€/MWh)
- PPT** Priority Price-Taking
- HBD** Hybrid
- BLK** Block
- CPL** Market Coupling Flow

### Trade's Volume Mix

	Sell - MWh	Buy - MWh	
<b>Lignite</b> (0.0%)	0	0	(0.0%)
<b>Crete Conv.</b> (0.0%)	0	0	(0.0%)
<b>Gas</b> (12.2%)	119	0	(0.0%)
<b>Hydro</b> (20.0%)	195	0	(0.0%)
<b>Imports</b> (32.1%)	312		
<b>RES</b> (16.7%)	162	664	(68.3%)
<b>Crete RES</b> (0.0%)	0	0	(0.0%)
<b>BESS</b> (0.0%)	0	0	(0.0%)
<b>HV Load</b> (0.0%)	0	18	(1.9%)
<b>MV Load</b> (0.1%)	1	12	(1.2%)
<b>LV Load</b> (18.8%)	183	41	(4.2%)
<b>Crete Load</b> (0.0%)	0	0	(0.0%)
<b>Pumping</b> (0.0%)	0	0	(0.0%)
<b>Exports</b>		237	(24.4%)
<b>Sys.Losses</b> (0.0%)	0	0	(0.0%)
<b>D/R Load</b> (0.0%)	0	0	(0.0%)

