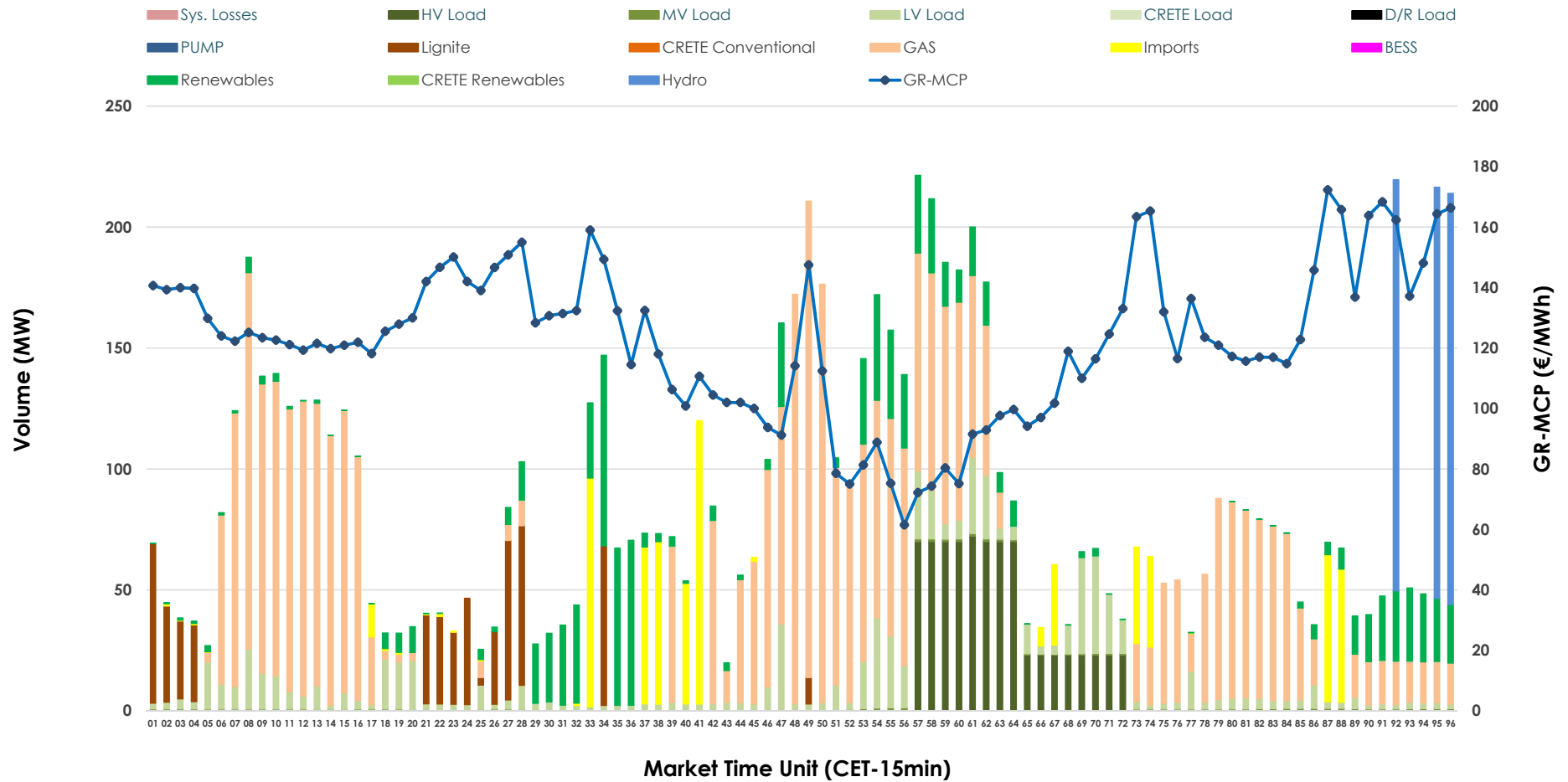


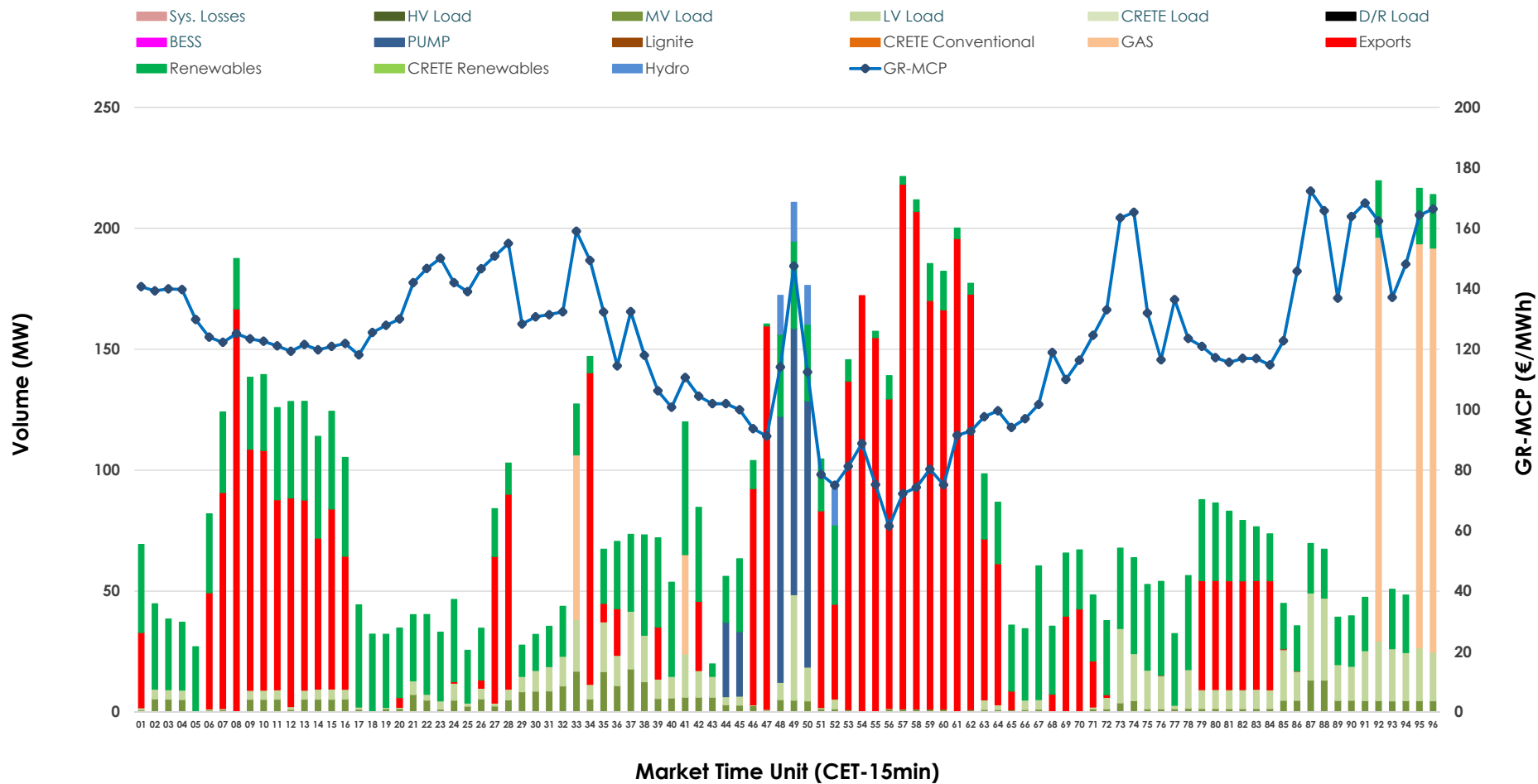


# IDA '1' Market Outlook

08.05.2026 IDA '1' Market - Sell



### 08.05.2026 IDA '1' Market - Buy



### GR Bidding Zone Weekly Figures

Delivery Day	02.05	03.05	04.05	05.05	06.05	07.05	08.05
	↗ 9%	↗ 16%	↗ 49%	↔ -1%	↗ 2%	↗ 20%	↗ 1%
<b>Avg.MCP (€/MWh)</b>	57.37	66.66	99.64	98.84	101.05	121.19	122.42
<b>Max.MCP (€/MWh)</b>	173.60	178.11	263.41	253.79	205.48	183.77	172.30
<b>Min.MCP (€/MWh)</b>	-16.90	-11.25	-10.89	-12.30	-9.97	21.99	61.50
	↘ -49%	↗ 61%	↘ -15%	↗ 11%	↘ -17%	↗ 59%	↘ -3%
<b>Tot.Vol(GWh)</b>	2.20	3.55	3.03	3.38	2.80	4.46	4.31

### Trades by Order Type

Delivery Day		02.05	03.05	04.05	05.05	06.05	07.05	08.05	
<b>Ord Price Type</b>		<b>Sell &amp; Buy Trades in (GWh) per Price Type</b>							<b>(%)</b>
<b>PPT</b>	(S)	0.000	0.000	0.000	0.000	0.000	0.000	0.000	0.00%
<b>HBD</b>	(S)	0.925	1.500	1.385	1.457	0.962	1.499	1.993	92.45%
<b>BLK</b>	(S)	0.000	0.000	0.000	0.000	0.000	0.000	0.000	0.00%
<b>CPL</b>	(S)	0.176	0.275	0.132	0.231	0.439	0.732	0.163	7.55%
<b>PPT</b>	(B)	0.000	0.000	0.000	0.000	0.000	0.000	0.000	0.00%
<b>HBD</b>	(B)	1.016	1.624	1.216	1.327	1.329	2.182	1.176	54.56%
<b>BLK</b>	(B)	0.000	0.000	0.000	0.000	0.000	0.000	0.000	0.00%
<b>CPL</b>	(B)	0.084	0.151	0.301	0.361	0.072	0.049	0.980	45.44%
		<b>Sell &amp; Buy Orders Traded per Price Type</b>							<b>(%)</b>
<b>PPT</b>	(S)	0	0	0	0	0	0	0	0.00%
<b>HBD</b>	(S)	389	340	415	362	155	234	405	100.00%
<b>BLK</b>	(S)	0	0	0	0	0	0	0	0.00%
<b>PPT</b>	(B)	0	0	0	0	0	0	0	0.00%
<b>HBD</b>	(B)	1017	793	644	763	823	592	532	100.00%
<b>BLK</b>	(B)	0	0	0	0	0	0	0	0.00%

- MCP** Market Clearing Price (€/MWh)
- PPT** Priority Price-Taking
- HBD** Hybrid
- BLK** Block
- CPL** Market Coupling Flow

### Trade's Volume Mix

	Sell - MWh	Buy - MWh	
<b>Lignite</b> (6.5%)	140	0	(0.0%)
<b>Crete Conv.</b> (0.0%)	0	0	(0.0%)
<b>Gas</b> (49.1%)	1,060	153	(7.1%)
<b>Hydro</b> (5.9%)	128	16	(0.7%)
<b>Imports</b> (7.5%)	163		
<b>RES</b> (12.0%)	260	622	(28.8%)
<b>Crete RES</b> (0.0%)	0	0	(0.0%)
<b>BESS</b> (0.0%)	0	0	(0.0%)
<b>HV Load</b> (8.7%)	187	0	(0.0%)
<b>MV Load</b> (0.7%)	14	96	(4.5%)
<b>LV Load</b> (9.6%)	206	193	(9.0%)
<b>Crete Load</b> (0.0%)	0	0	(0.0%)
<b>Pumping</b> (0.0%)	0	97	(4.5%)
<b>Exports</b>		980	(45.4%)
<b>Sys.Losses</b> (0.0%)	0	0	(0.0%)
<b>D/R Load</b> (0.0%)	0	0	(0.0%)

