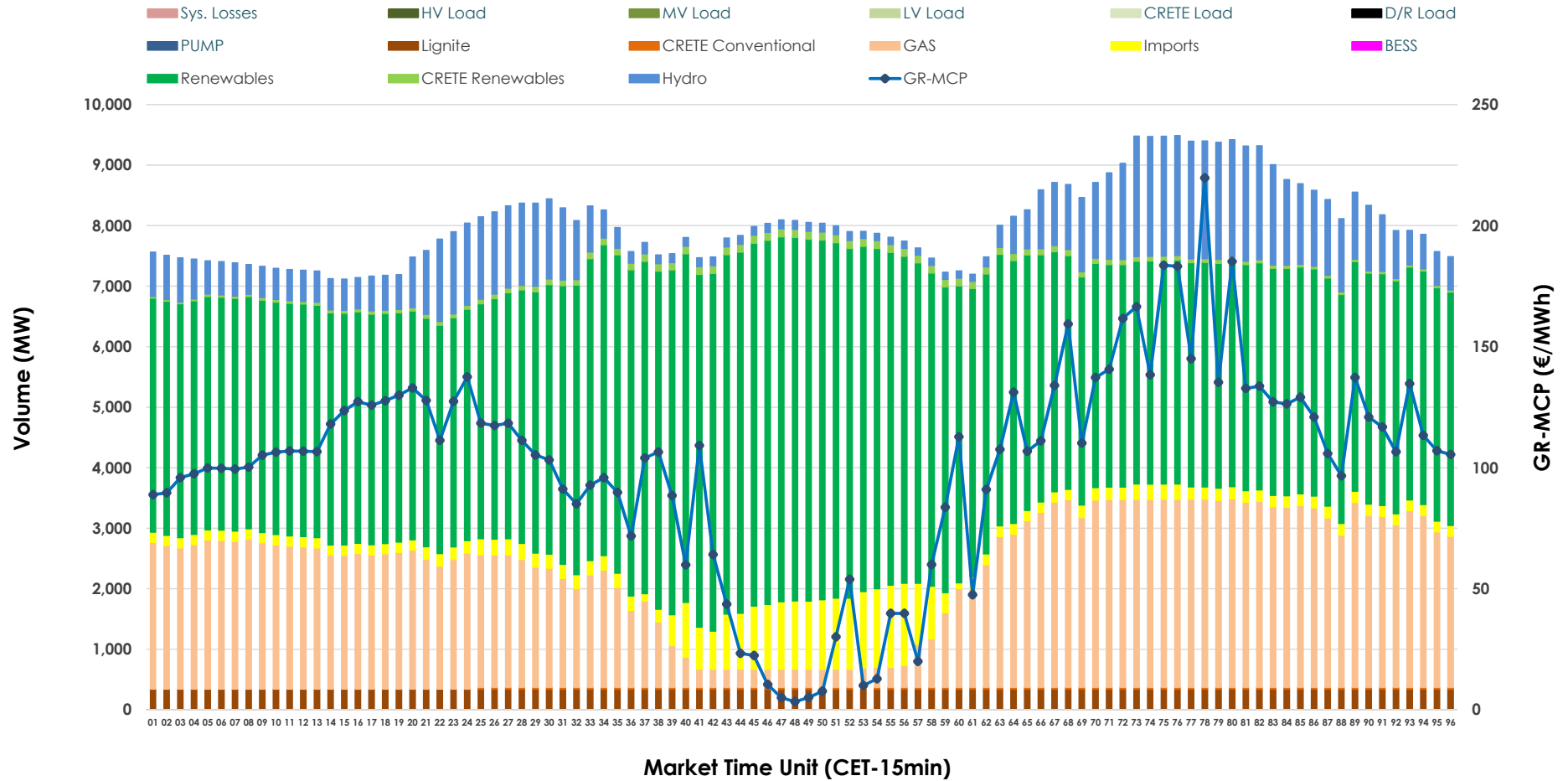


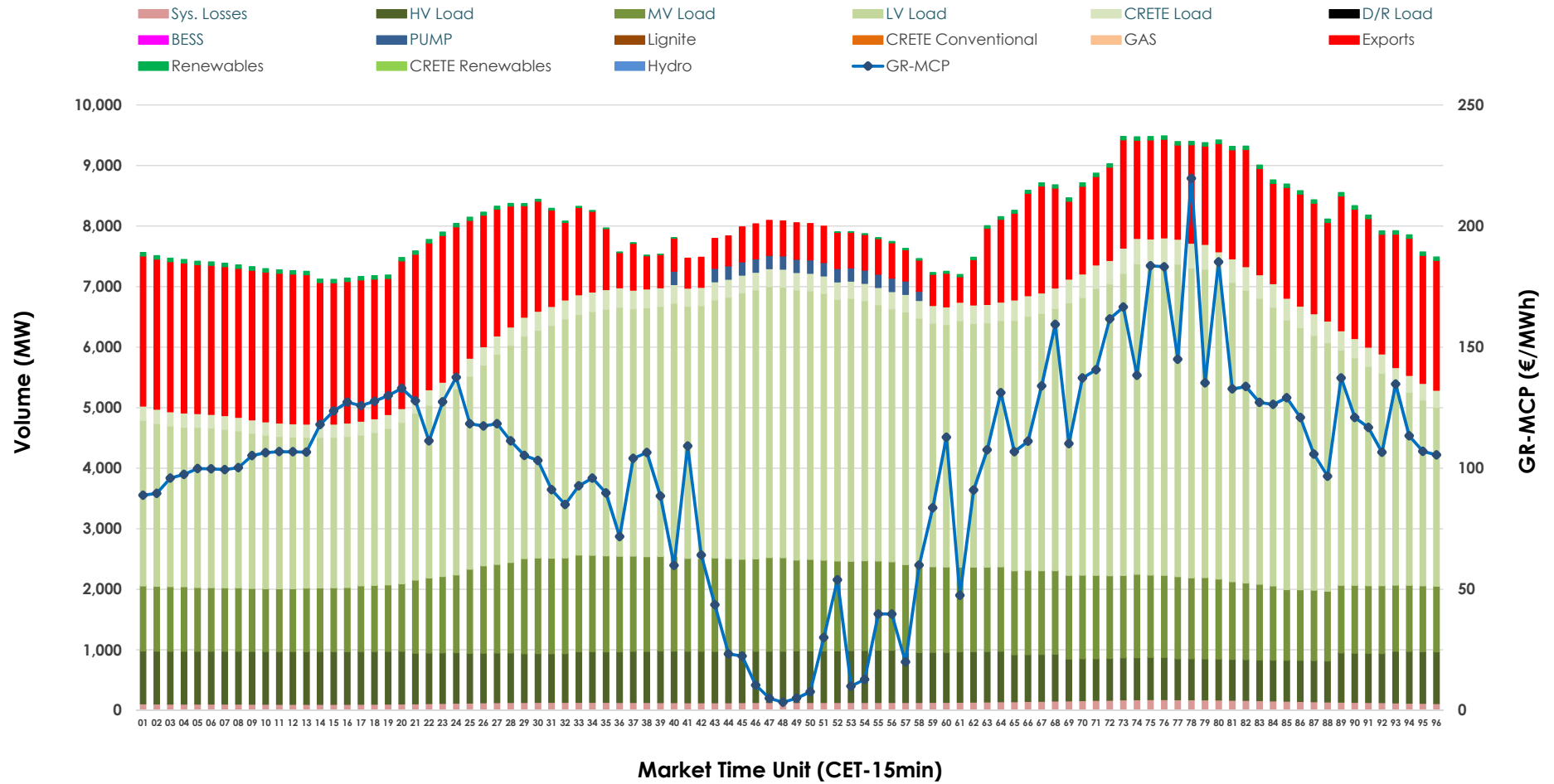


Day-Ahead Market Outlook

19.03.2026 Day-Ahead Market - Sell



19.03.2026 Day-Ahead Market - Buy



GR Bidding Zone Weekly Figures

Delivery Day	13.03	14.03	15.03	16.03	17.03	18.03	19.03
	👇 -17%	👇 -6%	👇 -1%	👆 20%	👆 16%	👇 -22%	👆 11%
Avg.MCP (€/MWh)	89.55	84.39	83.39	100.39	116.20	90.85	101.23
Max.MCP (€/MWh)	215.45	183.48	164.03	199.21	212.05	167.11	219.70
Min.MCP (€/MWh)	-0.10	-6.30	-1.01	11.01	40.40	3.88	3.34
	👆 1%	👇 -4%	👇 -6%	👆 4%	👆 17%	👇 0%	👇 -2%
Tot.Vol(GWh)	362.26	346.25	324.10	338.55	395.97	395.77	386.01

Trades by Order Type

Delivery Day		13.03	14.03	15.03	16.03	17.03	18.03	19.03	
Ord Price Type		Sell & Buy Trades in (GWh) per Price Type							(%)
PPT	(S)	88.806	81.903	74.010	71.660	84.654	94.196	93.438	48.41%
HBD	(S)	60.729	63.501	60.076	63.406	76.425	69.505	74.421	38.56%
BLK	(S)	31.267	27.207	27.936	29.721	36.898	28.203	20.366	10.55%
CPL	(S)	0.328	0.515	0.029	4.488	0.007	5.982	4.778	2.48%
PPT	(B)	14.237	14.168	12.939	13.684	14.050	13.302	13.670	7.08%
HBD	(B)	139.218	131.135	118.547	136.429	147.286	150.765	153.841	79.71%
BLK	(B)	0.000	0.000	0.000	0.000	0.000	0.000	0.000	0.00%
CPL	(B)	27.674	27.823	30.565	19.163	36.648	33.819	25.492	13.21%
		Sell & Buy Orders Traded per Price Type							(%)
PPT	(S)	1976	1847	1792	1814	1949	1927	2001	39.92%
HBD	(S)	2552	2666	2723	3131	3142	2970	3003	59.92%
BLK	(S)	14	12	12	10	21	12	8	0.16%
PPT	(B)	2364	2364	2341	2255	2260	2251	2246	35.34%
HBD	(B)	4085	3996	3981	3949	4043	4238	4109	64.66%
BLK	(B)	0	0	0	0	0	0	0	0.00%

- MCP** Market Clearing Price (€/MWh)
- PPT** Priority Price-Taking
- HBD** Hybrid
- BLK** Block
- CPL** Market Coupling Flow

Trade's Volume Mix

		Sell - MWh	Buy - MWh	
Lignite	(4.2%)	8,161	0	(0.0%)
Crete Conv.	(0.3%)	540	0	(0.0%)
Gas	(25.2%)	48,573	0	(0.0%)
Hydro	(9.9%)	19,109	0	(0.0%)
Imports	(4.6%)	8,936		
RES	(54.8%)	105,729	937	(0.5%)
Crete RES	(1.0%)	1,954	0	(0.0%)
BESS	(0.0%)	0	0	(0.0%)
HV Load	(0.0%)	0	19,424	(10.1%)
MV Load	(0.0%)	0	31,716	(16.4%)
LV Load	(0.0%)	0	91,548	(47.4%)
Crete Load	(0.0%)	0	7,326	(3.8%)
Pumping	(0.0%)	0	918	(0.5%)
Exports			37,965	(19.7%)
Sys.Losses	(0.0%)	0	3,170	(1.6%)
D/R Load	(0.0%)	0	0	(0.0%)

