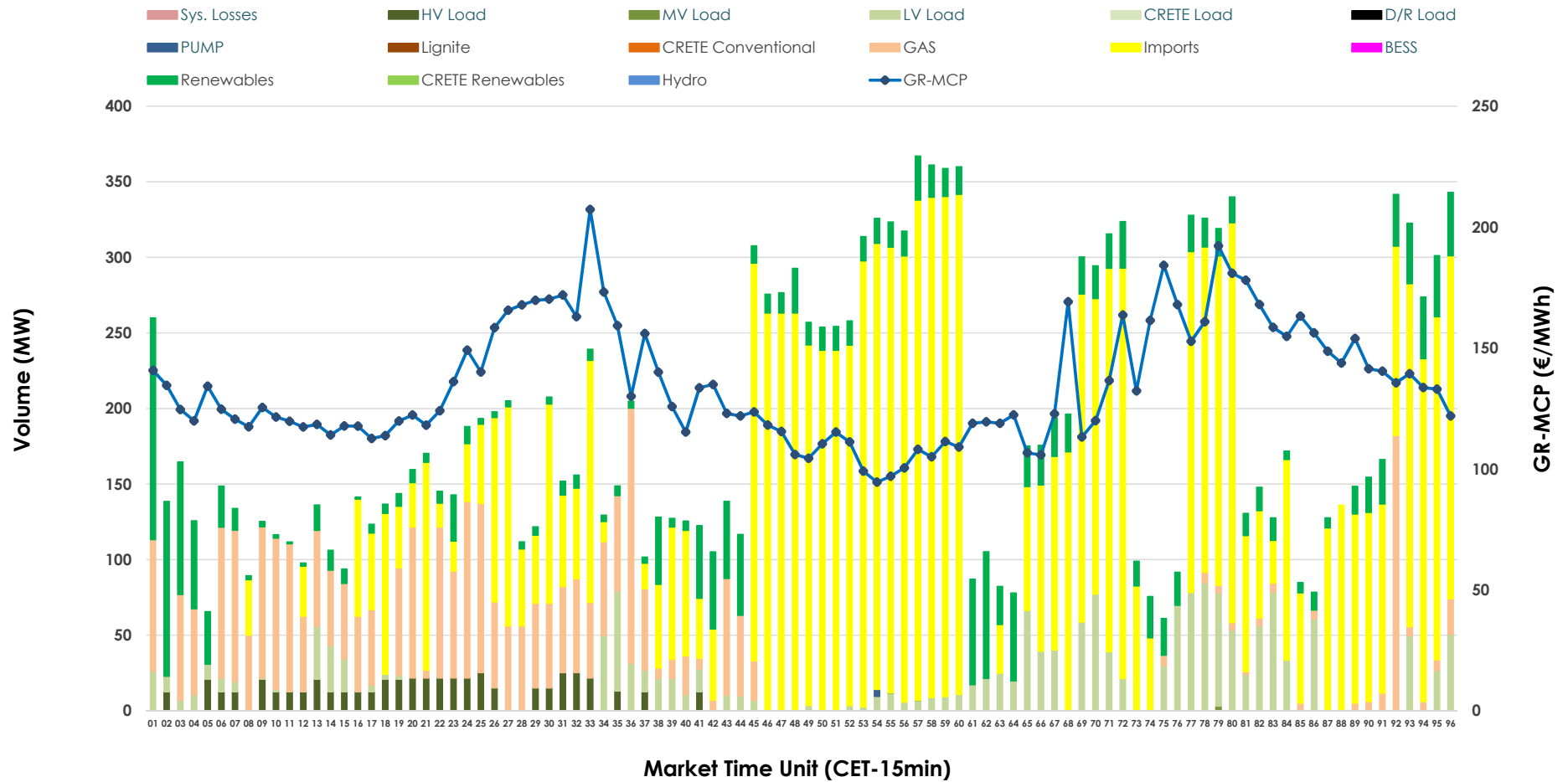


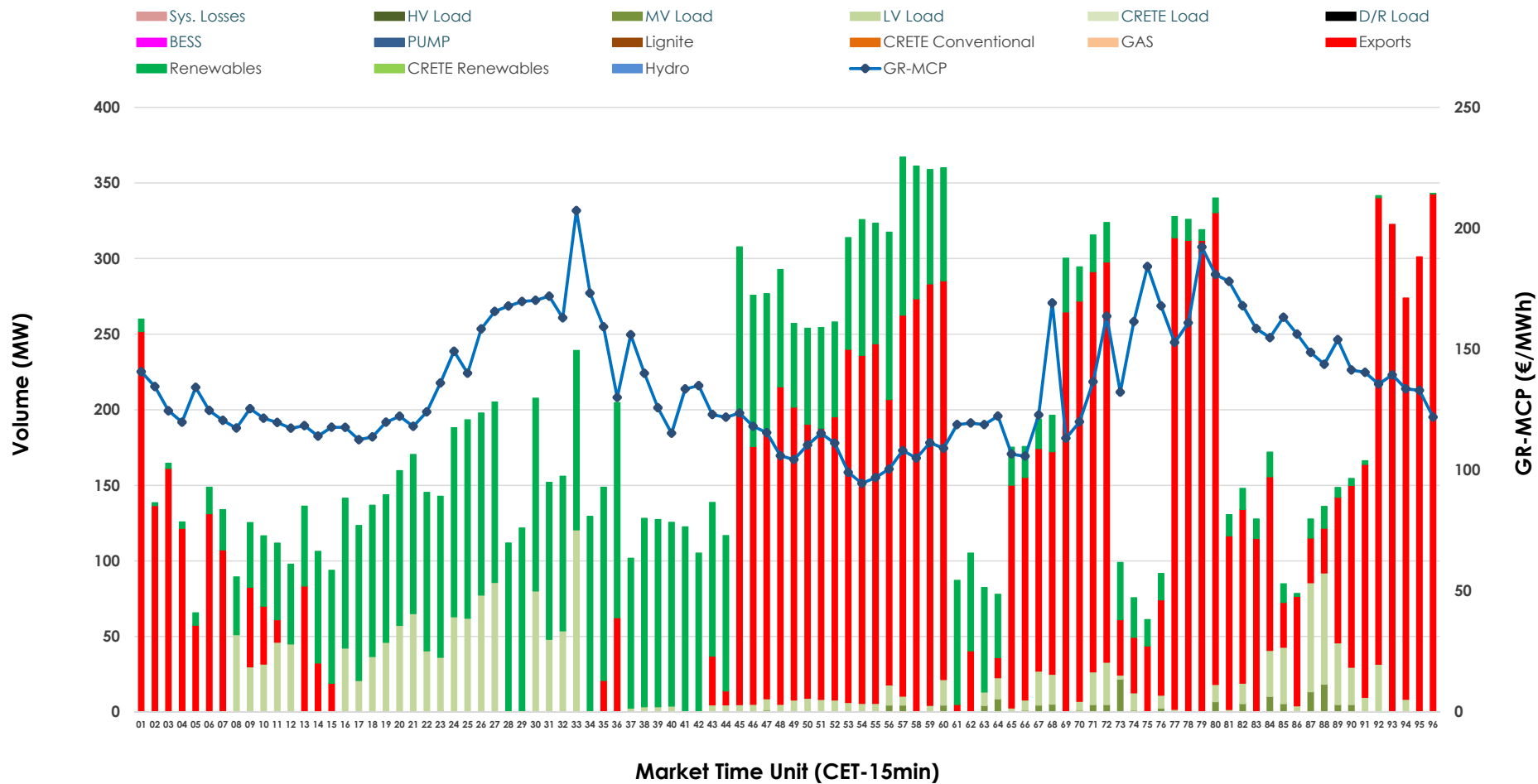


IDA '2' Market Outlook

02.04.2026 IDA '2' Market - Sell



02.04.2026 IDA '2' Market - Buy



GR Bidding Zone Weekly Figures

Delivery Day	27.03	28.03	29.03	30.03	31.03	01.04	02.04
	↗ 22%	↘ -11%	↘ -12%	↗ 57%	↗ 18%	↗ 11%	↘ -11%
Avg.MCP (€/MWh)	93.44	82.83	73.07	115.06	135.71	150.68	134.81
Max.MCP (€/MWh)	150.70	159.68	139.62	222.69	223.43	227.84	207.31
Min.MCP (€/MWh)	4.22	6.23	-16.08	0.00	84.06	103.20	94.56
	↘ -25%	↗ 9%	↘ -17%	↗ 11%	↗ 37%	↗ 54%	↗ 12%
Tot.Vol(GWh)	3.81	4.14	3.45	3.84	5.26	8.13	9.11

Trades by Order Type

Delivery Day		27.03	28.03	29.03	30.03	31.03	01.04	02.04	
Ord Price Type		Sell & Buy Trades in (GWh) per Price Type							(%)
PPT	(S)	0.000	0.000	0.000	0.000	0.000	0.000	0.000	0.00%
HBD	(S)	1.571	0.713	1.412	1.209	2.216	2.487	1.846	40.50%
BLK	(S)	0.000	0.000	0.000	0.000	0.000	0.000	0.000	0.00%
CPL	(S)	0.336	1.357	0.312	0.709	0.416	1.580	2.711	59.50%
PPT	(B)	0.000	0.000	0.000	0.000	0.000	0.000	0.000	0.00%
HBD	(B)	1.730	1.309	0.762	1.465	1.028	2.032	1.944	42.65%
BLK	(B)	0.000	0.000	0.000	0.000	0.000	0.000	0.000	0.00%
CPL	(B)	0.177	0.762	0.962	0.453	1.605	2.034	2.613	57.35%
		Sell & Buy Orders Traded per Price Type							(%)
PPT	(S)	0	0	0	0	0	0	0	0.00%
HBD	(S)	345	381	375	407	443	274	398	100.00%
BLK	(S)	0	0	0	0	0	0	0	0.00%
PPT	(B)	0	0	0	0	0	0	0	0.00%
HBD	(B)	700	490	233	511	587	571	409	100.00%
BLK	(B)	0	0	0	0	0	0	0	0.00%

- MCP** Market Clearing Price (€/MWh)
- PPT** Priority Price-Taking
- HBD** Hybrid
- BLK** Block
- CPL** Market Coupling Flow

Trade's Volume Mix

		Sell - MWh	Buy - MWh	
Lignite	(0.0%)	0	0	(0.0%)
Crete Conv.	(0.0%)	0	0	(0.0%)
Gas	(16.2%)	740	0	(0.0%)
Hydro	(0.0%)	0	0	(0.0%)
Imports	(59.5%)	2,711		
RES	(12.0%)	548	1,458	(32.0%)
Crete RES	(0.0%)	0	0	(0.0%)
BESS	(0.0%)	0	0	(0.0%)
HV Load	(2.8%)	129	0	(0.0%)
MV Load	(0.0%)	1	37	(0.8%)
LV Load	(9.4%)	426	449	(9.9%)
Crete Load	(0.0%)	0	0	(0.0%)
Pumping	(0.0%)	1	0	(0.0%)
Exports			2,613	(57.3%)
Sys.Losses	(0.0%)	0	0	(0.0%)
D/R Load	(0.0%)	0	0	(0.0%)

