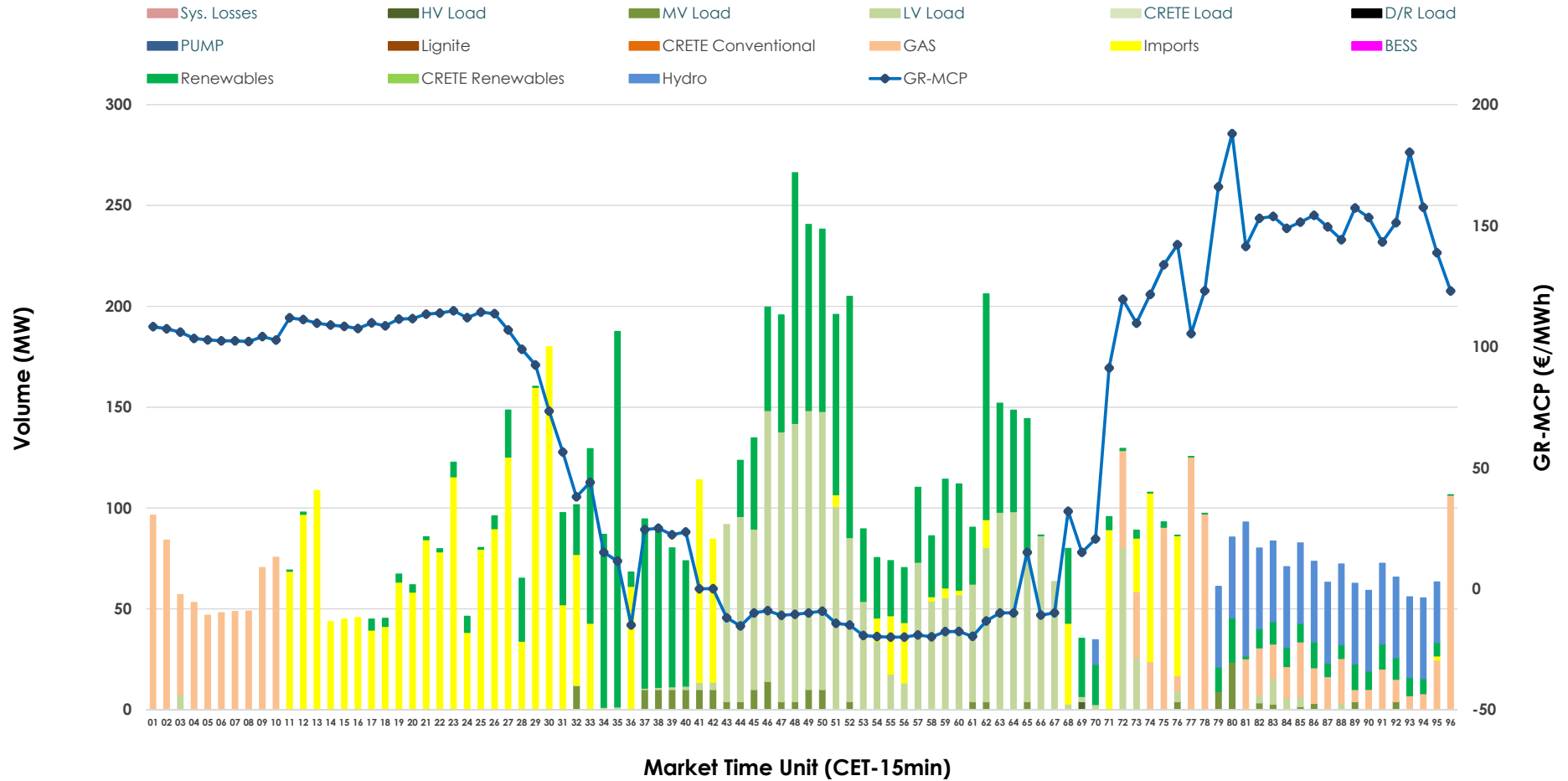


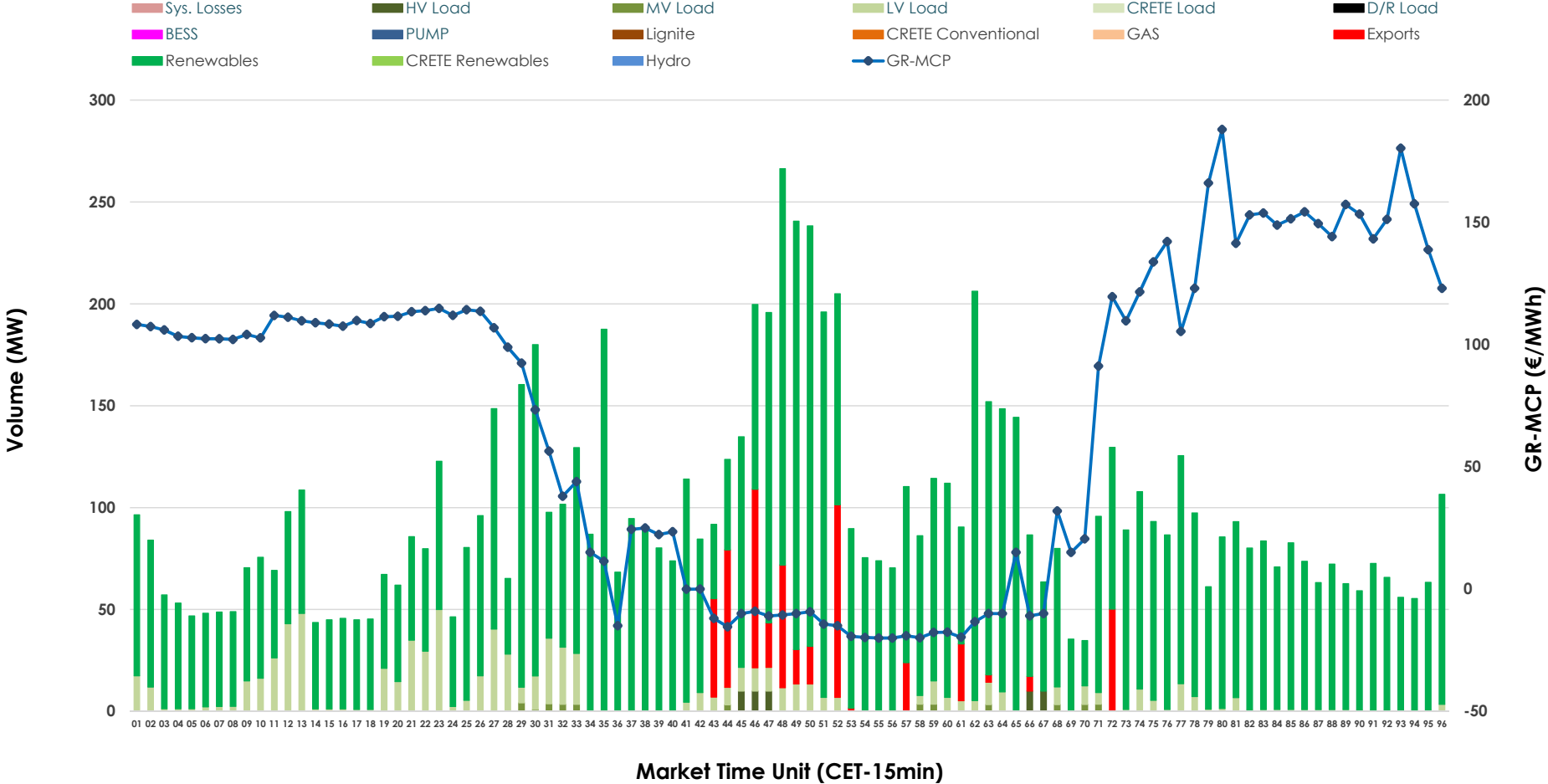


# IDA '2' Market Outlook

03.05.2026 IDA '2' Market - Sell



### 03.05.2026 IDA '2' Market - Buy



### GR Bidding Zone Weekly Figures

Delivery Day	27.04	28.04	29.04	30.04	01.05	02.05	03.05
	↑ 53%	↓ -12%	↑ 45%	↓ -14%	↓ -32%	↑ 13%	↑ 8%
<b>Avg.MCP (€/MWh)</b>	79.14	69.62	101.24	86.96	58.74	66.43	71.66
<b>Max.MCP (€/MWh)</b>	229.04	155.85	220.05	209.77	118.93	168.12	187.97
<b>Min.MCP (€/MWh)</b>	-0.83	-25.33	-5.16	-5.23	-12.00	-20.00	-20.00
	↔ 33%	↓ -17%	↔ 2%	↔ 29%	↓ -18%	↑ 46%	↓ -25%
<b>Tot.Vol(GWh)</b>	4.73	3.91	4.01	5.18	4.27	6.22	4.66

### Trades by Order Type

Delivery Day		27.04	28.04	29.04	30.04	01.05	02.05	03.05	
<b>Ord Price Type</b>		<b>Sell &amp; Buy Trades in (GWh) per Price Type</b>							<b>(%)</b>
<b>PPT</b>	(S)	0.000	0.000	0.000	0.000	0.000	0.000	0.000	0.00%
<b>HBD</b>	(S)	1.628	0.892	1.623	2.016	1.781	2.831	1.733	74.32%
<b>BLK</b>	(S)	0.000	0.000	0.000	0.000	0.000	0.000	0.000	0.00%
<b>CPL</b>	(S)	0.736	1.064	0.381	0.572	0.352	0.277	0.599	25.68%
<b>PPT</b>	(B)	0.000	0.000	0.000	0.000	0.000	0.000	0.000	0.00%
<b>HBD</b>	(B)	2.024	1.839	1.229	2.052	1.235	1.727	2.200	94.32%
<b>BLK</b>	(B)	0.000	0.000	0.000	0.000	0.000	0.000	0.000	0.00%
<b>CPL</b>	(B)	0.340	0.118	0.775	0.536	0.898	1.381	0.132	5.68%
		<b>Sell &amp; Buy Orders Traded per Price Type</b>							<b>(%)</b>
<b>PPT</b>	(S)	0	0	0	0	0	0	0	0.00%
<b>HBD</b>	(S)	390	206	420	428	525	429	305	100.00%
<b>BLK</b>	(S)	0	0	0	0	0	0	0	0.00%
<b>PPT</b>	(B)	0	0	0	0	0	0	0	0.00%
<b>HBD</b>	(B)	740	512	512	448	344	395	466	100.00%
<b>BLK</b>	(B)	0	0	0	0	0	0	0	0.00%

- MCP** Market Clearing Price (€/MWh)
- PPT** Priority Price-Taking
- HBD** Hybrid
- BLK** Block
- CPL** Market Coupling Flow

### Trade's Volume Mix

	Sell - MWh	Buy - MWh	
<b>Lignite</b> (0.0%)	0	0	(0.0%)
<b>Crete Conv.</b> (0.0%)	0	0	(0.0%)
<b>Gas</b> (15.0%)	351	0	(0.0%)
<b>Hydro</b> (7.6%)	177	0	(0.0%)
<b>Imports</b> (25.7%)	599		
<b>RES</b> (25.7%)	600	1,977	(84.8%)
<b>Crete RES</b> (0.0%)	0	0	(0.0%)
<b>BESS</b> (0.0%)	0	0	(0.0%)
<b>HV Load</b> (0.0%)	1	13	(0.5%)
<b>MV Load</b> (2.2%)	51	10	(0.4%)
<b>LV Load</b> (23.7%)	553	201	(8.6%)
<b>Crete Load</b> (0.0%)	0	0	(0.0%)
<b>Pumping</b> (0.0%)	0	0	(0.0%)
<b>Exports</b>		132	(5.7%)
<b>Sys.Losses</b> (0.0%)	0	0	(0.0%)
<b>D/R Load</b> (0.0%)	0	0	(0.0%)

