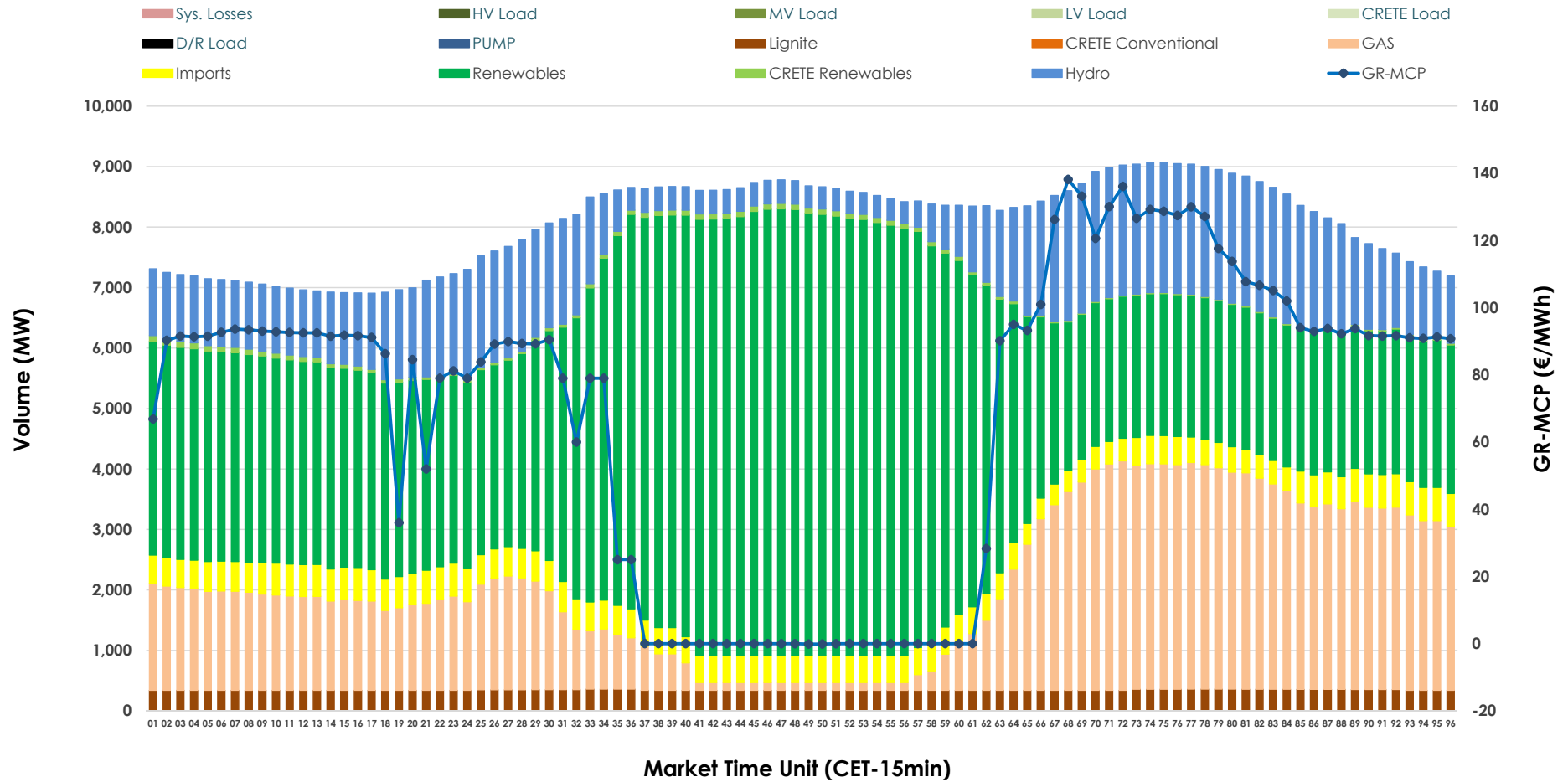


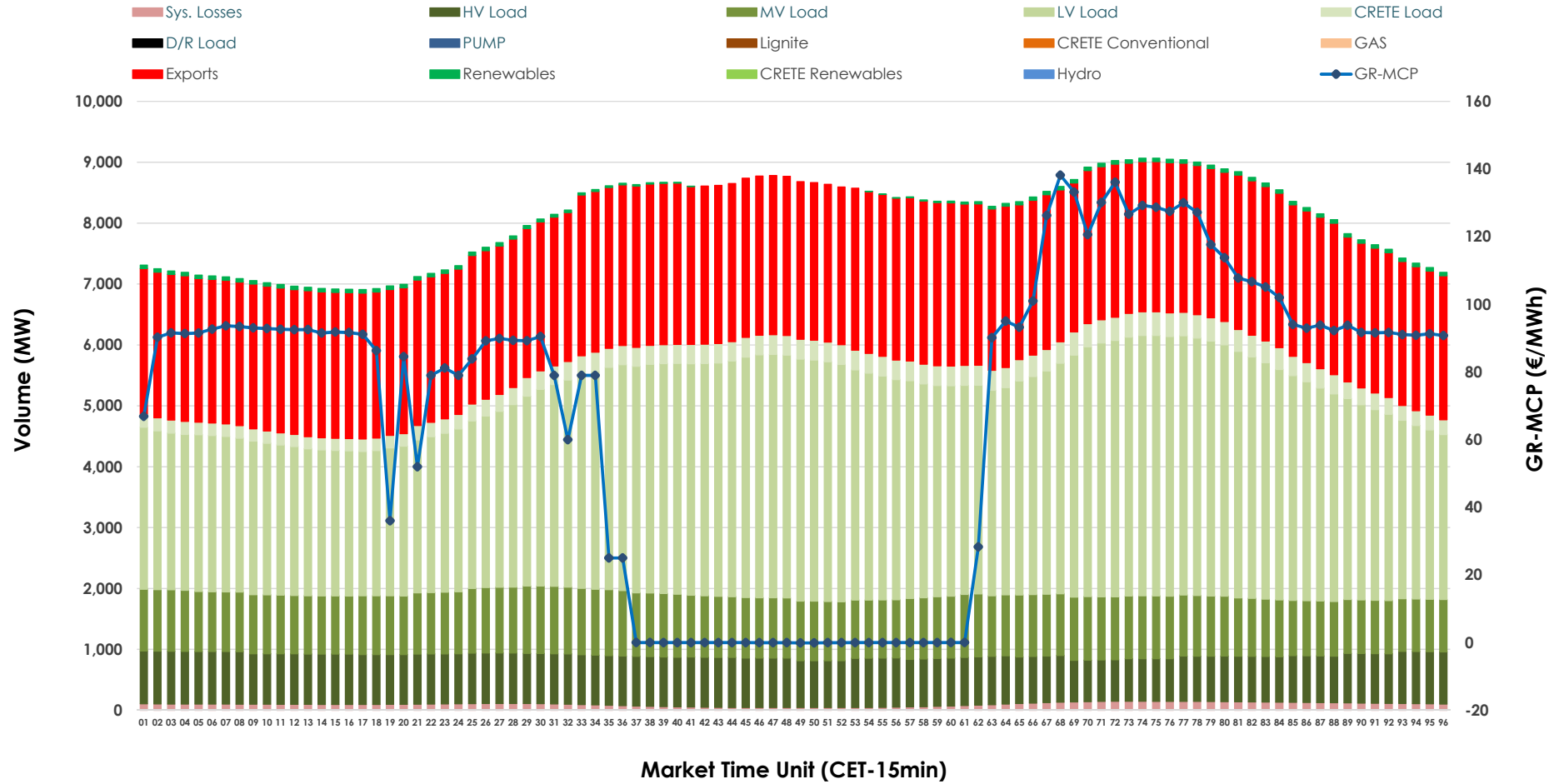


# Day-Ahead Market Outlook

07.02.2026 Day-Ahead Market - Sell



### 07.02.2026 Day-Ahead Market - Buy



### GR Bidding Zone Weekly Figures

Delivery Day	01.02	02.02	03.02	04.02	05.02	06.02	07.02
	👇 -4%	👆 20%	👉 0%	👇 -18%	👉 1%	👇 -5%	👇 -28%
<b>Avg.MCP (€/MWh)</b>	101.14	121.82	121.82	100.27	101.12	96.42	69.15
<b>Max.MCP (€/MWh)</b>	134.83	246.62	216.88	137.73	158.84	143.87	138.17
<b>Min.MCP (€/MWh)</b>	60.00	89.15	77.88	0.01	52.50	0.10	-0.10
	👇 -2%	👆 12%	👇 -2%	👉 0%	👉 1%	👇 -3%	👇 -6%
<b>Tot.Vol(GWh)</b>	383.04	429.13	420.24	422.19	425.83	412.48	387.98

### Trades by Order Type

Delivery Day		01.02	02.02	03.02	04.02	05.02	06.02	07.02	
<b>Ord Price Type</b>		Sell & Buy Trades in (GWh) per Price Type							(%)
<b>PPT</b>	(S)	93.785	94.401	86.646	99.050	100.032	98.643	97.391	50.20%
<b>HBD</b>	(S)	61.041	73.737	71.789	71.845	75.250	72.470	75.676	39.01%
<b>BLK</b>	(S)	34.935	44.589	48.842	40.198	37.633	32.126	20.926	10.79%
<b>CPL</b>	(S)	1.760	1.837	2.844	0.000	0.000	3.000	0.000	0.00%
<b>PPT</b>	(B)	12.883	14.412	14.445	13.914	13.913	13.578	13.223	6.82%
<b>HBD</b>	(B)	139.193	157.240	156.715	151.872	152.005	148.188	135.733	69.97%
<b>BLK</b>	(B)	0.000	0.000	0.000	0.000	0.000	0.000	0.000	0.00%
<b>CPL</b>	(B)	39.446	42.912	38.961	45.307	46.997	44.473	45.036	23.22%
		Sell & Buy Orders Traded per Price Type							(%)
<b>PPT</b>	(S)	2123	2177	2232	2251	2154	2193	2220	48.51%
<b>HBD</b>	(S)	2632	2732	2988	2798	2809	2799	2348	51.31%
<b>BLK</b>	(S)	18	19	15	15	13	13	8	0.17%
<b>PPT</b>	(B)	2337	2229	2216	2234	2227	2220	2356	35.43%
<b>HBD</b>	(B)	3890	3882	3884	3985	3881	4062	4294	64.57%
<b>BLK</b>	(B)	0	0	0	0	0	0	0	0.00%

**MCP** Market Clearing Price (€/MWh)  
**PPT** Priority Price-Taking  
**HBD** Hybrid  
**BLK** Block  
**CPL** Market Coupling Flow

### Trade's Volume Mix

		Sell - MWh	Buy - MWh	
<b>Lignite</b>	(4.3%)	8,274	0	(0.0%)
<b>Crete Conv.</b>	(0.0%)	0	0	(0.0%)
<b>Gas</b>	(22.1%)	42,783	0	(0.0%)
<b>Hydro</b>	(15.9%)	30,897	0	(0.0%)
<b>Imports</b>	(5.8%)	11,271		
<b>RES</b>	(51.3%)	99,446	973	(0.5%)
<b>Crete RES</b>	(0.7%)	1,321	0	(0.0%)
<b>HV Load</b>	(0.0%)	0	19,185	(9.9%)
<b>MV Load</b>	(0.0%)	0	23,818	(12.3%)
<b>LV Load</b>	(0.0%)	0	80,576	(41.5%)
<b>Crete Load</b>	(0.0%)	0	7,114	(3.7%)
<b>Pumping</b>	(0.0%)	0	0	(0.0%)
<b>Exports</b>			59,986	(30.9%)
<b>Sys.Losses</b>	(0.0%)	0	2,340	(1.2%)
<b>D/R Load</b>	(0.0%)	0	0	(0.0%)

