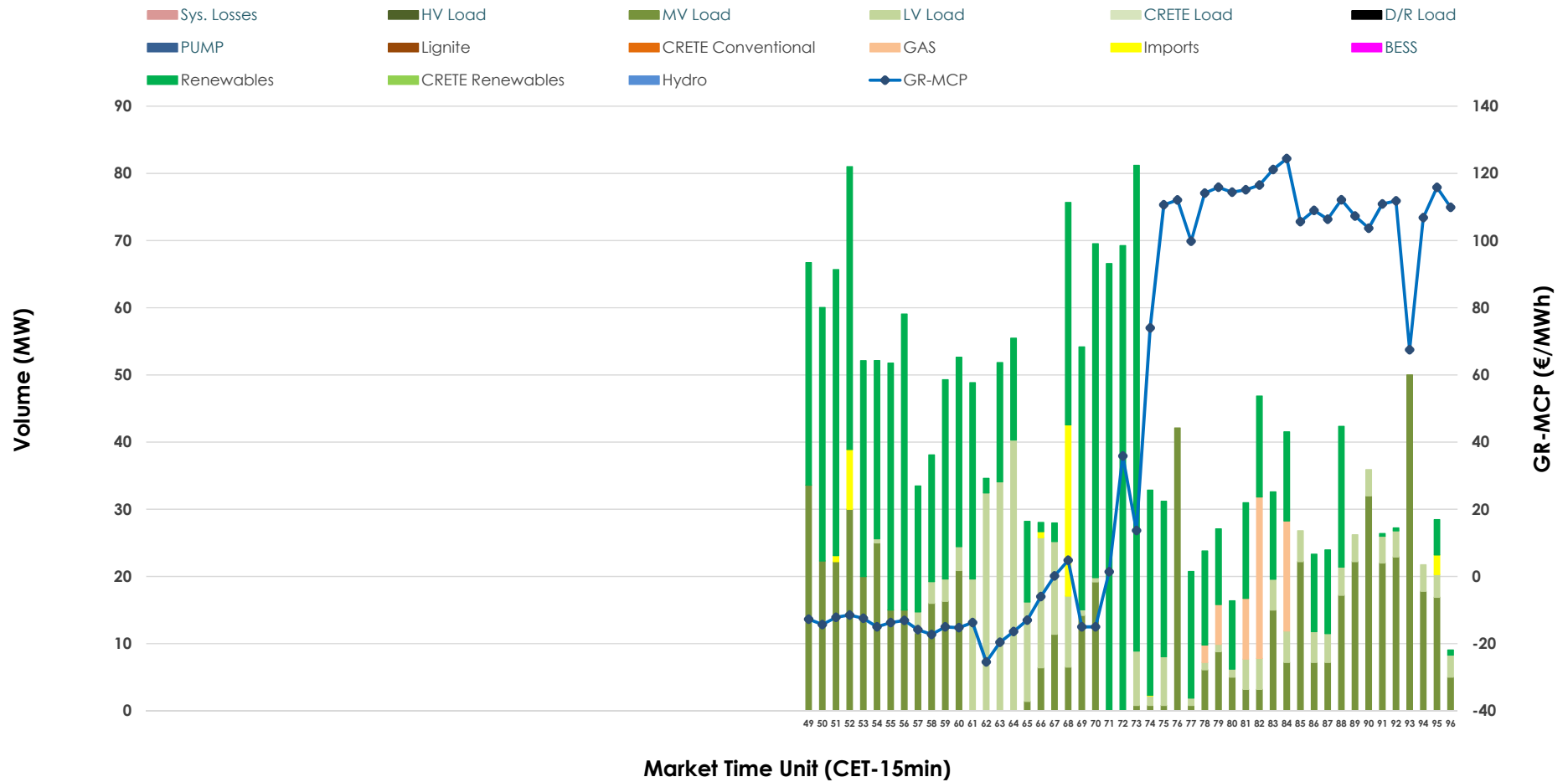


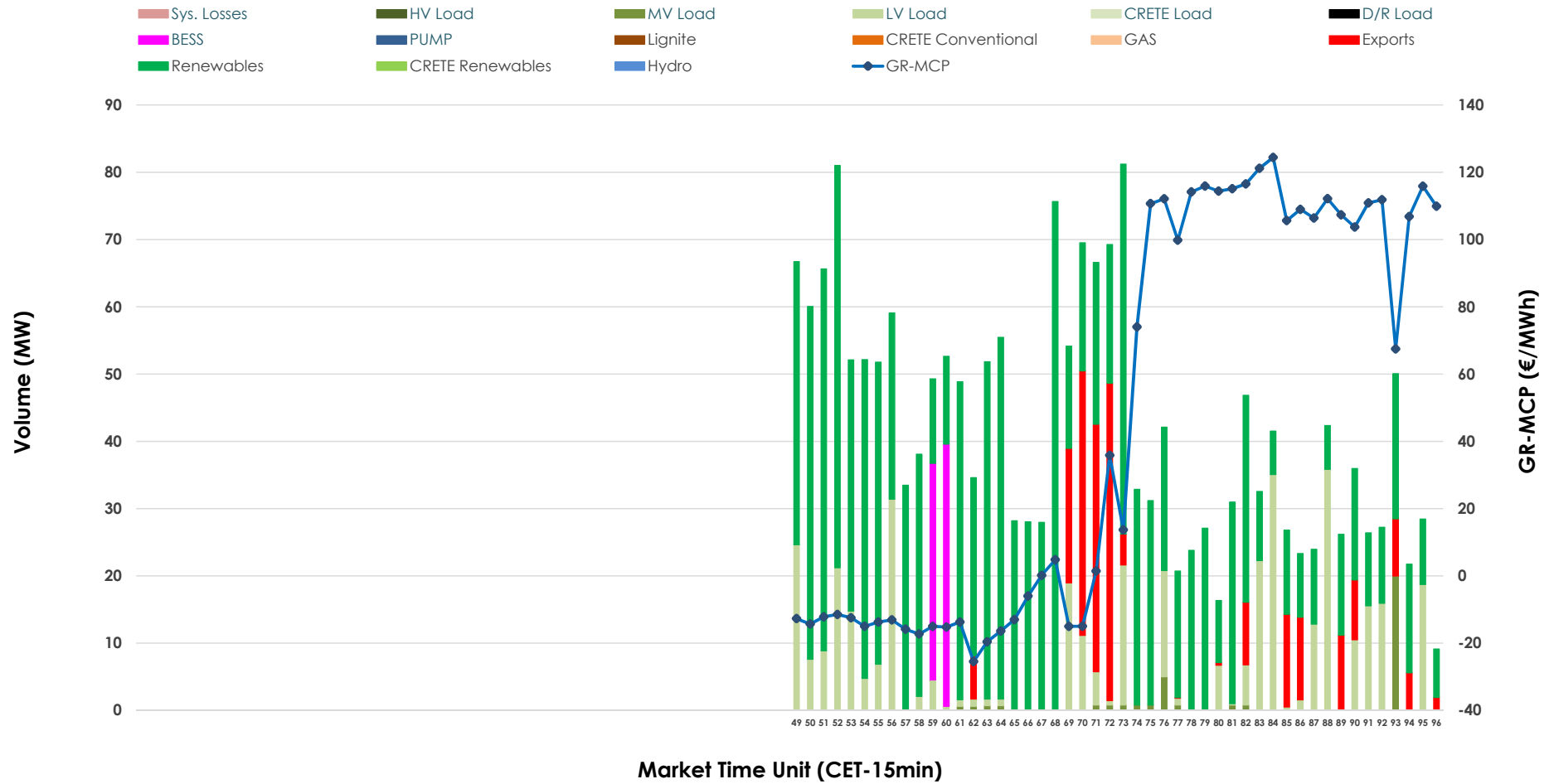


IDA '3' Market Outlook

13.06.2026 IDA '3' Market - Sell



13.06.2026 IDA '3' Market - Buy



GR Bidding Zone Weekly Figures

Delivery Day	07.06	08.06	09.06	10.06	11.06	12.06	13.06
	⇒ 0%	↑ 72%	⇒ 1%	⇒ 5%	⇒ -14%	⇒ 5%	↓ -57%
Avg.MCP (€/MWh)	66.65	114.70	115.70	121.94	104.93	110.09	46.84
Max.MCP (€/MWh)	149.92	195.70	203.07	197.81	162.38	171.30	124.40
Min.MCP (€/MWh)	-11.56	6.55	16.45	-6.35	35.10	79.76	-25.47
	↓ -38%	⇒ 26%	↑ 40%	⇒ -13%	⇒ 31%	↓ -57%	⇒ -28%
Tot.Vol(GWh)	1.62	2.04	2.85	2.48	3.26	1.42	1.02

Trades by Order Type

Delivery Day		07.06	08.06	09.06	10.06	11.06	12.06	13.06	
Ord Price Type		Sell & Buy Trades in (GWh) per Price Type							(%)
PPT	(S)	0.000	0.000	0.000	0.000	0.000	0.000	0.000	0.00%
HBD	(S)	0.713	0.529	1.346	0.406	0.777	0.697	0.500	98.08%
BLK	(S)	0.000	0.000	0.000	0.000	0.000	0.000	0.000	0.00%
CPL	(S)	0.097	0.492	0.081	0.836	0.855	0.011	0.010	1.92%
PPT	(B)	0.000	0.000	0.000	0.000	0.000	0.000	0.000	0.00%
HBD	(B)	0.500	1.007	0.618	0.618	0.702	0.345	0.454	88.92%
BLK	(B)	0.000	0.000	0.000	0.000	0.000	0.000	0.000	0.00%
CPL	(B)	0.310	0.014	0.809	0.625	0.930	0.363	0.057	11.08%
		Sell & Buy Orders Traded per Price Type							(%)
PPT	(S)	0	0	0	0	0	0	0	0.00%
HBD	(S)	79	133	237	156	168	278	214	100.00%
BLK	(S)	0	0	0	0	0	0	0	0.00%
PPT	(B)	0	0	0	0	0	0	0	0.00%
HBD	(B)	172	255	274	245	229	184	131	100.00%
BLK	(B)	0	0	0	0	0	0	0	0.00%

- MCP** Market Clearing Price (€/MWh)
- PPT** Priority Price-Taking
- HBD** Hybrid
- BLK** Block
- CPL** Market Coupling Flow

Trade's Volume Mix

	Sell - MWh	Buy - MWh	
Lignite (0.0%)	0	0	(0.0%)
Crete Conv. (0.0%)	0	0	(0.0%)
Gas (2.8%)	14	0	(0.0%)
Hydro (0.0%)	0	0	(0.0%)
Imports (1.9%)	10		
RES (49.8%)	254	330	(64.8%)
Crete RES (0.0%)	0	0	(0.0%)
BESS (0.0%)	0	18	(3.5%)
HV Load (0.0%)	0	0	(0.0%)
MV Load (31.5%)	161	9	(1.7%)
LV Load (13.9%)	71	97	(19.0%)
Crete Load (0.0%)	0	0	(0.0%)
Pumping (0.0%)	0	0	(0.0%)
Exports		57	(11.1%)
Sys.Losses (0.0%)	0	0	(0.0%)
D/R Load (0.0%)	0	0	(0.0%)

