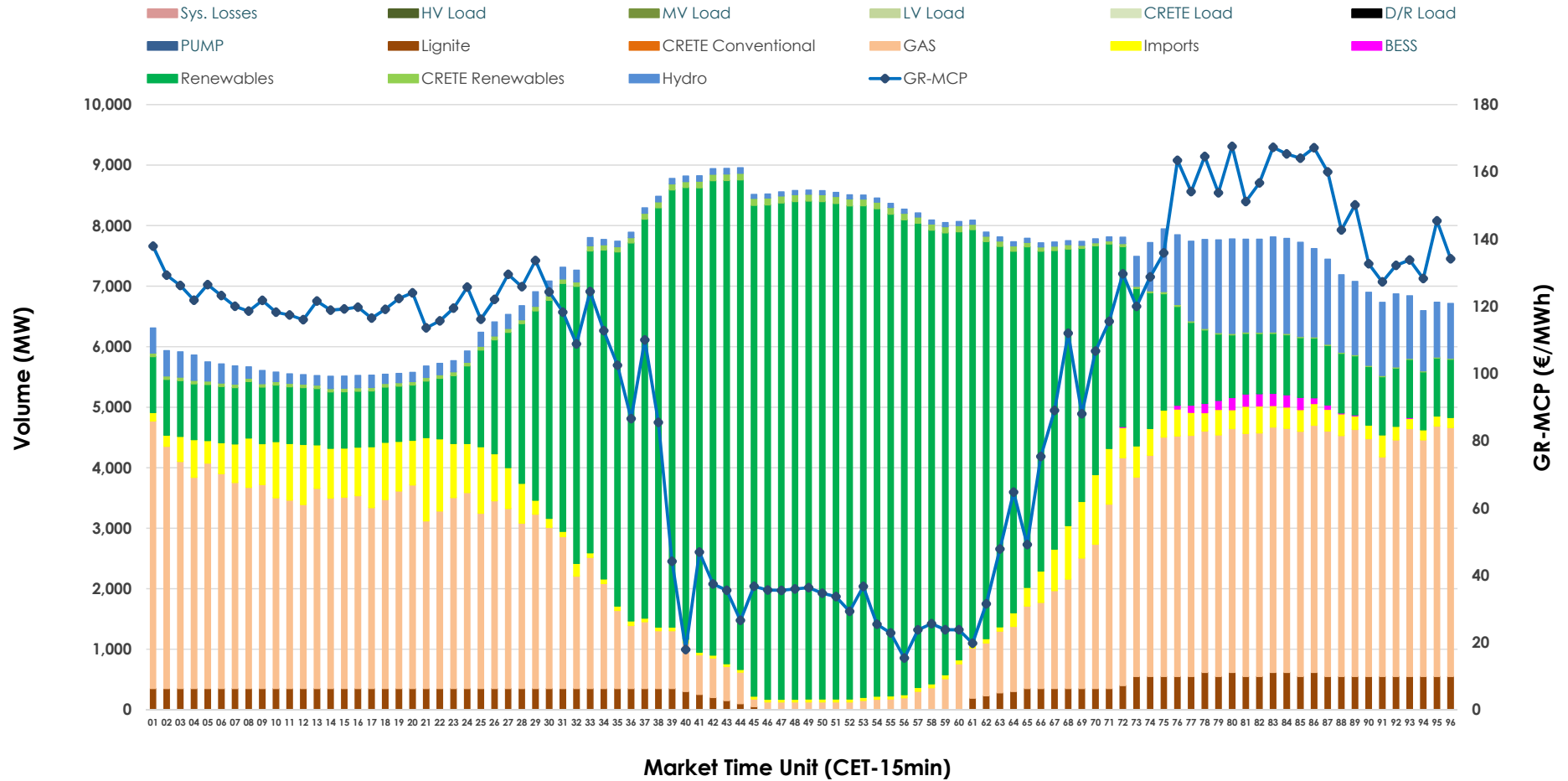


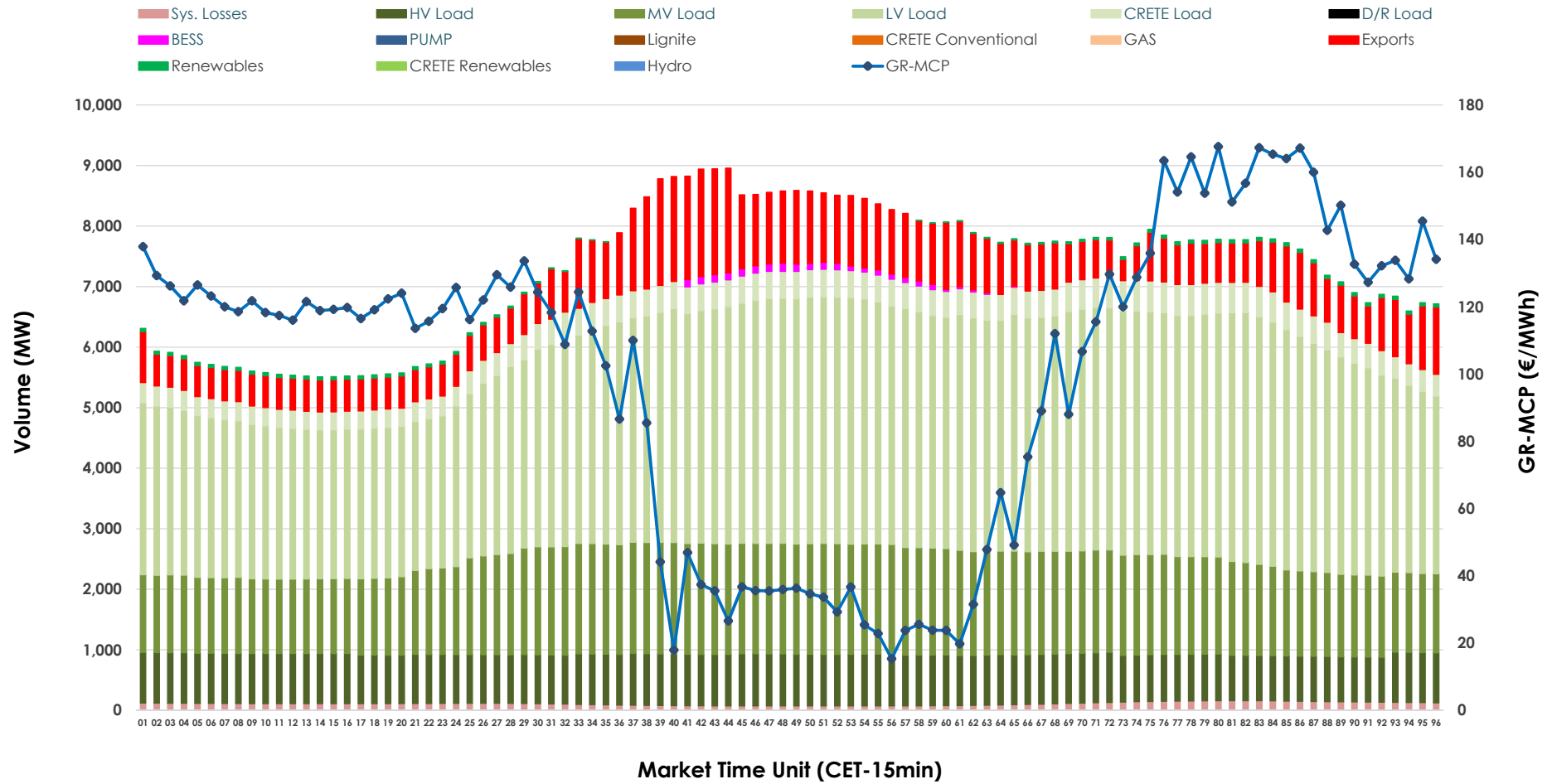


Day-Ahead Market Outlook

11.06.2026 Day-Ahead Market - Sell



11.06.2026 Day-Ahead Market - Buy



GR Bidding Zone Weekly Figures

Delivery Day	05.06	06.06	07.06	08.06	09.06	10.06	11.06
	↗ 26%	↘ -29%	↘ -29%	↗ 65%	↗ 20%	↘ -9%	↘ -3%
Avg.MCP (€/MWh)	114.69	81.97	57.86	95.42	114.46	104.15	100.74
Max.MCP (€/MWh)	182.76	156.59	144.30	198.86	221.03	200.90	167.58
Min.MCP (€/MWh)	18.59	0.00	-5.00	-0.01	-0.01	-0.01	15.37
	↘ -2%	↘ -4%	↘ -9%	↗ 26%	↗ 3%	↘ -2%	↘ -2%
Tot.Vol(GWh)	321.16	306.90	280.10	351.55	361.76	354.80	348.94

Trades by Order Type

Delivery Day		05.06	06.06	07.06	08.06	09.06	10.06	11.06	
Ord Price Type		Sell & Buy Trades in (GWh) per Price Type							(%)
PPT	(S)	58.338	56.563	59.103	72.630	65.539	61.558	57.801	33.13%
HBD	(S)	70.853	63.063	47.065	72.260	79.650	77.318	74.310	42.59%
BLK	(S)	28.875	30.143	21.989	30.502	33.822	37.882	36.463	20.90%
CPL	(S)	2.516	3.683	11.896	0.382	1.870	0.639	5.898	3.38%
PPT	(B)	15.503	15.317	16.008	16.525	15.928	16.475	16.757	9.60%
HBD	(B)	136.467	128.886	123.201	142.899	146.848	145.565	147.692	84.65%
BLK	(B)	0.000	0.000	0.000	0.000	0.000	0.000	0.000	0.00%
CPL	(B)	8.612	9.249	0.843	16.351	18.105	15.358	10.022	5.74%
		Sell & Buy Orders Traded per Price Type							(%)
PPT	(S)	1718	1725	1683	1794	1689	1649	1662	31.51%
HBD	(S)	3574	3457	2774	3328	3724	3651	3597	68.20%
BLK	(S)	11	13	10	14	18	17	15	0.28%
PPT	(B)	2359	2329	2349	2408	2379	2333	2348	37.02%
HBD	(B)	3898	3900	3851	3616	3938	4000	3995	62.98%
BLK	(B)	0	0	0	0	0	0	0	0.00%

- MCP** Market Clearing Price (€/MWh)
- PPT** Priority Price-Taking
- HBD** Hybrid
- BLK** Block
- CPL** Market Coupling Flow

Trade's Volume Mix

		Sell - MWh	Buy - MWh	
Lignite	(4.6%)	8,022	0	(0.0%)
Crete Conv.	(0.0%)	0	0	(0.0%)
Gas	(33.5%)	58,534	0	(0.0%)
Hydro	(5.8%)	10,089	0	(0.0%)
Imports	(5.4%)	9,497		
RES	(49.5%)	86,278	776	(0.4%)
Crete RES	(0.9%)	1,572	0	(0.0%)
BESS	(0.3%)	480	534	(0.3%)
HV Load	(0.0%)	0	19,561	(11.2%)
MV Load	(0.0%)	0	37,828	(21.7%)
LV Load	(0.0%)	0	82,906	(47.5%)
Crete Load	(0.0%)	0	9,885	(5.7%)
Pumping	(0.0%)	0	0	(0.0%)
Exports			20,339	(11.7%)
Sys.Losses	(0.0%)	0	2,643	(1.5%)
D/R Load	(0.0%)	0	0	(0.0%)

