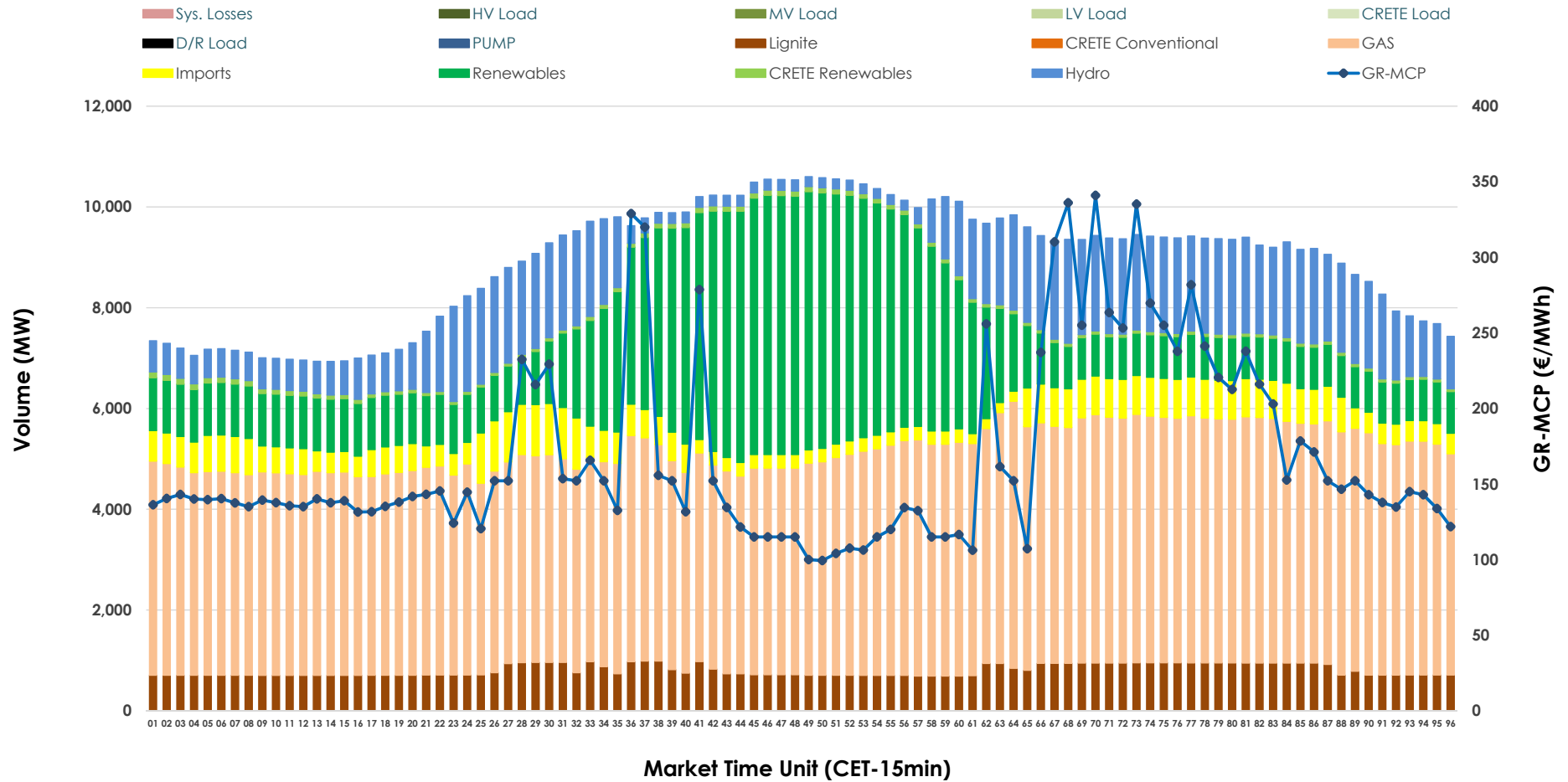


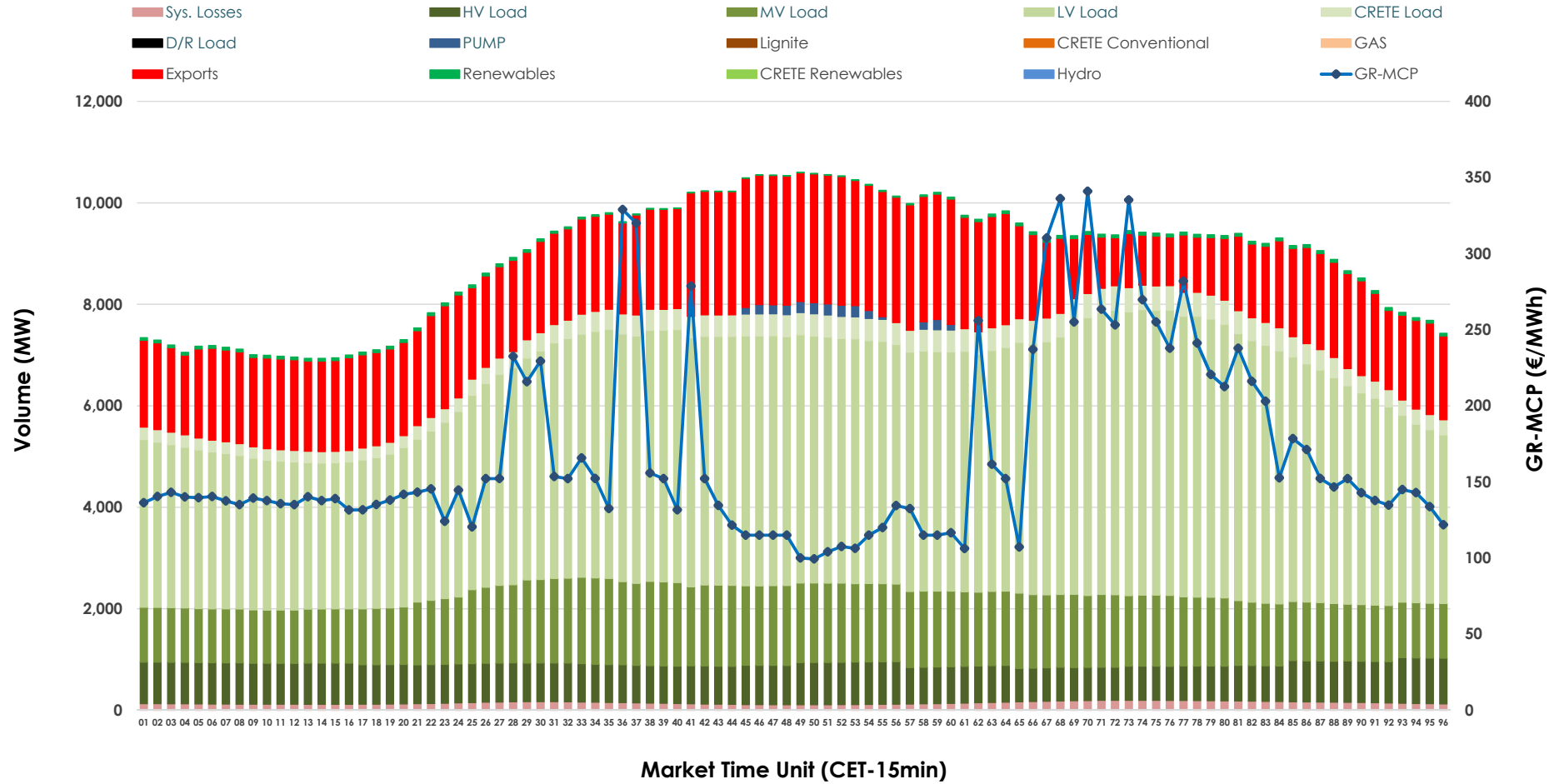


Day-Ahead Market Outlook

23.01.2026 Day-Ahead Market - Sell



23.01.2026 Day-Ahead Market - Buy



GR Bidding Zone Weekly Figures

Delivery Day	17.01	18.01	19.01	20.01	21.01	22.01	23.01
	↘ -24%	↗ 0%	↗ 13%	↗ 2%	↗ 30%	↗ 14%	↗ 1%
Avg.MCP (€/MWh)	96.63	96.80	109.79	112.19	146.16	166.64	168.51
Max.MCP (€/MWh)	145.50	161.30	179.33	168.88	219.71	303.18	340.95
Min.MCP (€/MWh)	75.87	76.30	85.27	83.22	112.66	120.92	99.39
	↗ 3%	↘ -3%	↗ 14%	↗ 1%	↘ -4%	↘ -7%	↗ 2%
Tot.Vol(GWh)	421.63	409.46	467.60	470.26	450.65	418.57	428.96

Trades by Order Type

Delivery Day		17.01	18.01	19.01	20.01	21.01	22.01	23.01	
Ord Price Type		Sell & Buy Trades in (GWh) per Price Type							(%)
PPT	(S)	84.263	93.026	88.536	85.075	74.579	63.071	64.295	29.98%
HBD	(S)	77.931	77.276	91.996	91.571	85.064	70.433	72.127	33.63%
BLK	(S)	48.620	34.426	52.894	57.008	65.547	72.431	72.715	33.90%
CPL	(S)	0.000	0.000	0.375	1.476	0.135	3.353	5.344	2.49%
PPT	(B)	14.574	14.643	17.944	17.500	17.485	17.078	16.695	7.78%
HBD	(B)	154.660	150.739	176.493	179.976	176.297	173.142	168.583	78.60%
BLK	(B)	0.000	0.000	0.000	0.000	0.000	0.000	0.000	0.00%
CPL	(B)	41.579	39.346	39.363	37.654	31.542	19.067	29.202	13.62%
		Sell & Buy Orders Traded per Price Type							(%)
PPT	(S)	2046	2185	2109	2069	2039	2014	2046	38.41%
HBD	(S)	2727	2718	2693	2977	3262	3301	3258	61.16%
BLK	(S)	21	14	17	19	18	22	23	0.43%
PPT	(B)	2274	2404	2357	2350	2276	2260	2297	34.98%
HBD	(B)	4057	4111	4190	4177	4090	4193	4269	65.02%
BLK	(B)	0	0	0	0	0	0	0	0.00%

MCP Market Clearing Price (€/MWh)
PPT Priority Price-Taking
HBD Hybrid
BLK Block
CPL Market Coupling Flow

Trade's Volume Mix

	Sell - MWh	Buy - MWh	
Lignite (9.0%)	19,256	0	(0.0%)
Crete Conv. (0.0%)	0	0	(0.0%)
Gas (49.2%)	105,606	0	(0.0%)
Hydro (12.9%)	27,743	0	(0.0%)
Imports (6.2%)	13,275		
RES (21.8%)	46,716	1,023	(0.5%)
Crete RES (0.9%)	1,883	0	(0.0%)
HV Load (0.0%)	0	18,340	(8.6%)
MV Load (0.0%)	0	32,619	(15.2%)
LV Load (0.0%)	0	104,848	(48.9%)
Crete Load (0.0%)	0	8,941	(4.2%)
Pumping (0.0%)	0	612	(0.3%)
Exports		44,611	(20.8%)
Sys.Losses (0.0%)	0	3,486	(1.6%)
D/R Load (0.0%)	0	0	(0.0%)

