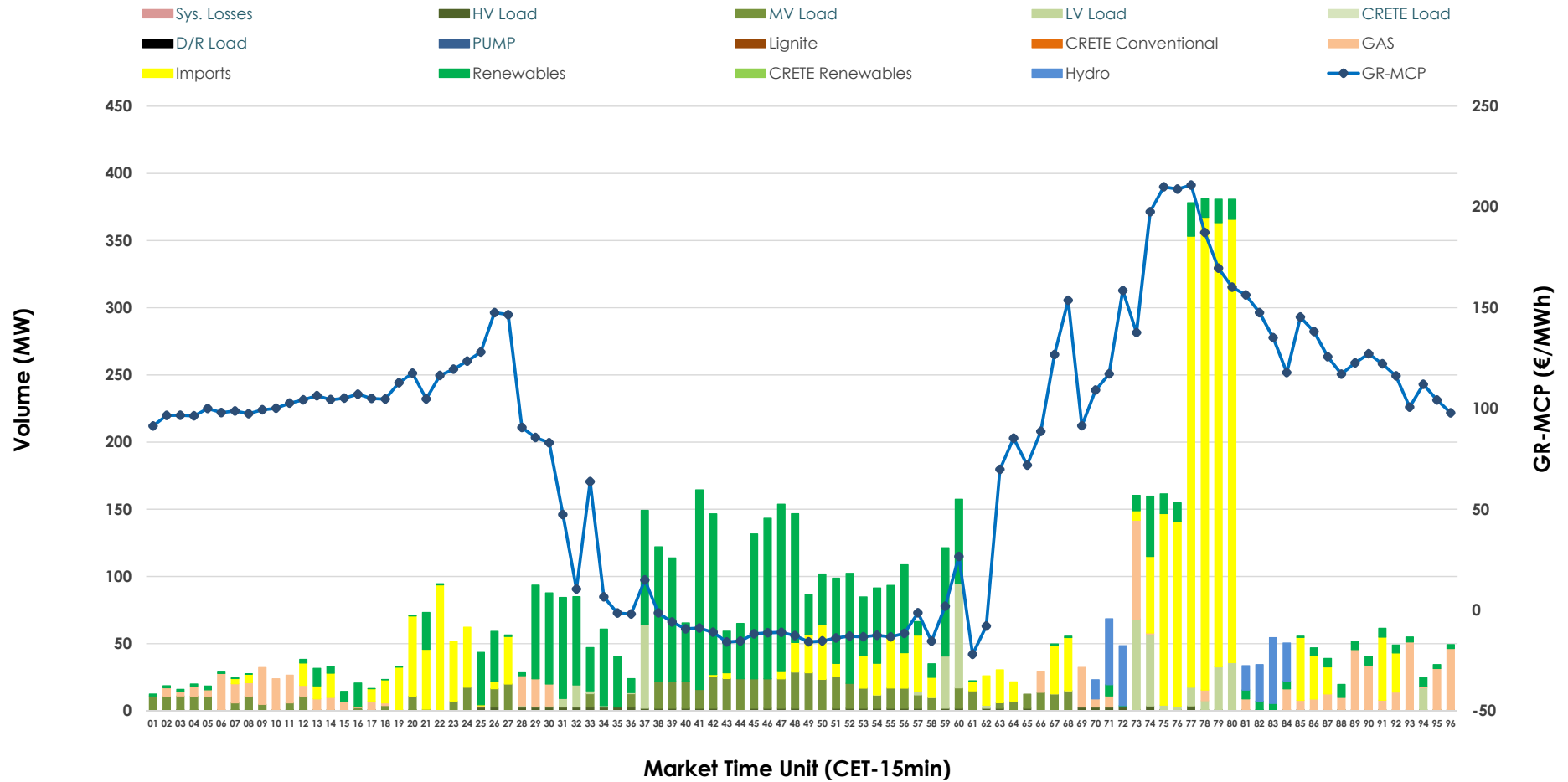


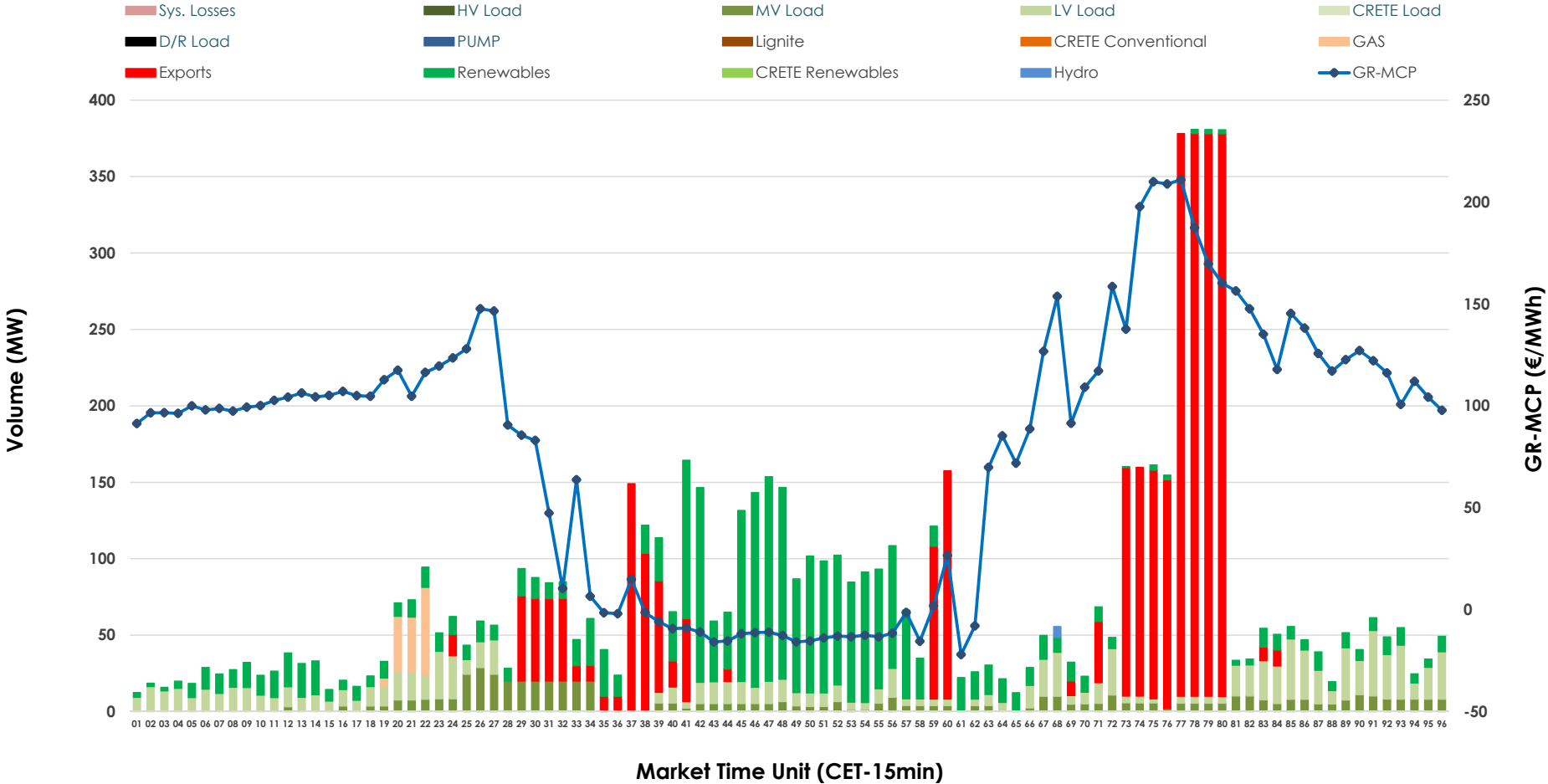


# IDA '2' Market Outlook

06.03.2026 IDA '2' Market - Sell



### 06.03.2026 IDA '2' Market - Buy



### GR Bidding Zone Weekly Figures

Delivery Day	28.02	01.03	02.03	03.03	04.03	05.03	06.03
	👇 -23%	👇 -31%	👆 130%	👆 35%	👇 -13%	👆 3%	👇 -18%
<b>Avg.MCP (€/MWh)</b>	50.54	35.08	80.72	109.02	94.68	97.40	79.46
<b>Max.MCP (€/MWh)</b>	105.45	115.24	256.35	254.11	263.83	207.30	210.88
<b>Min.MCP (€/MWh)</b>	-20.07	-35.00	-29.06	9.57	-7.85	4.08	-22.00
	👆 299%	👇 -73%	👆 6%	👇 -2%	👇 -25%	👇 -13%	👆 28%
<b>Tot.Vol(GWh)</b>	15.63	4.23	4.50	4.41	3.33	2.89	3.70

### Trades by Order Type

Delivery Day		28.02	01.03	02.03	03.03	04.03	05.03	06.03	
<b>Ord Price Type</b>		<b>Sell &amp; Buy Trades in (GWh) per Price Type</b>							<b>(%)</b>
<b>PPT</b>	(S)	0.000	0.000	0.000	0.000	0.000	0.000	0.000	0.00%
<b>HBD</b>	(S)	1.932	1.809	1.551	1.052	1.325	0.976	1.168	63.09%
<b>BLK</b>	(S)	0.000	0.000	0.000	0.000	0.000	0.000	0.000	0.00%
<b>CPL</b>	(S)	5.884	0.309	0.697	1.155	0.338	0.469	0.684	36.91%
<b>PPT</b>	(B)	0.000	0.000	0.000	0.000	0.000	0.000	0.000	0.00%
<b>HBD</b>	(B)	7.476	1.518	1.866	1.971	1.525	1.145	1.085	58.62%
<b>BLK</b>	(B)	0.000	0.000	0.000	0.000	0.000	0.000	0.000	0.00%
<b>CPL</b>	(B)	0.340	0.599	0.383	0.236	0.138	0.301	0.766	41.38%
		<b>Sell &amp; Buy Orders Traded per Price Type</b>							<b>(%)</b>
<b>PPT</b>	(S)	0	0	0	0	0	0	0	0.00%
<b>HBD</b>	(S)	205	253	221	261	137	267	332	100.00%
<b>BLK</b>	(S)	0	0	0	0	0	0	0	0.00%
<b>PPT</b>	(B)	0	0	0	0	0	0	0	0.00%
<b>HBD</b>	(B)	261	361	480	630	486	450	501	100.00%
<b>BLK</b>	(B)	0	0	0	0	0	0	0	0.00%

**MCP** Market Clearing Price (€/MWh)  
**PPT** Priority Price-Taking  
**HBD** Hybrid  
**BLK** Block  
**CPL** Market Coupling Flow

### Trade's Volume Mix

	Sell - MWh	Buy - MWh	
<b>Lignite</b>	0	0	(0.0%)
<b>Crete Conv.</b>	0	0	(0.0%)
<b>Gas</b>	167	34	(1.8%)
<b>Hydro</b>	58	2	(0.1%)
<b>Imports</b>	684		
<b>RES</b>	630	602	(32.5%)
<b>Crete RES</b>	0	0	(0.0%)
<b>HV Load</b>	32	3	(0.1%)
<b>MV Load</b>	170	147	(7.9%)
<b>LV Load</b>	111	298	(16.1%)
<b>Crete Load</b>	0	0	(0.0%)
<b>Pumping</b>	0	0	(0.0%)
<b>Exports</b>		766	(41.4%)
<b>Sys.Losses</b>	0	0	(0.0%)
<b>D/R Load</b>	0	0	(0.0%)

