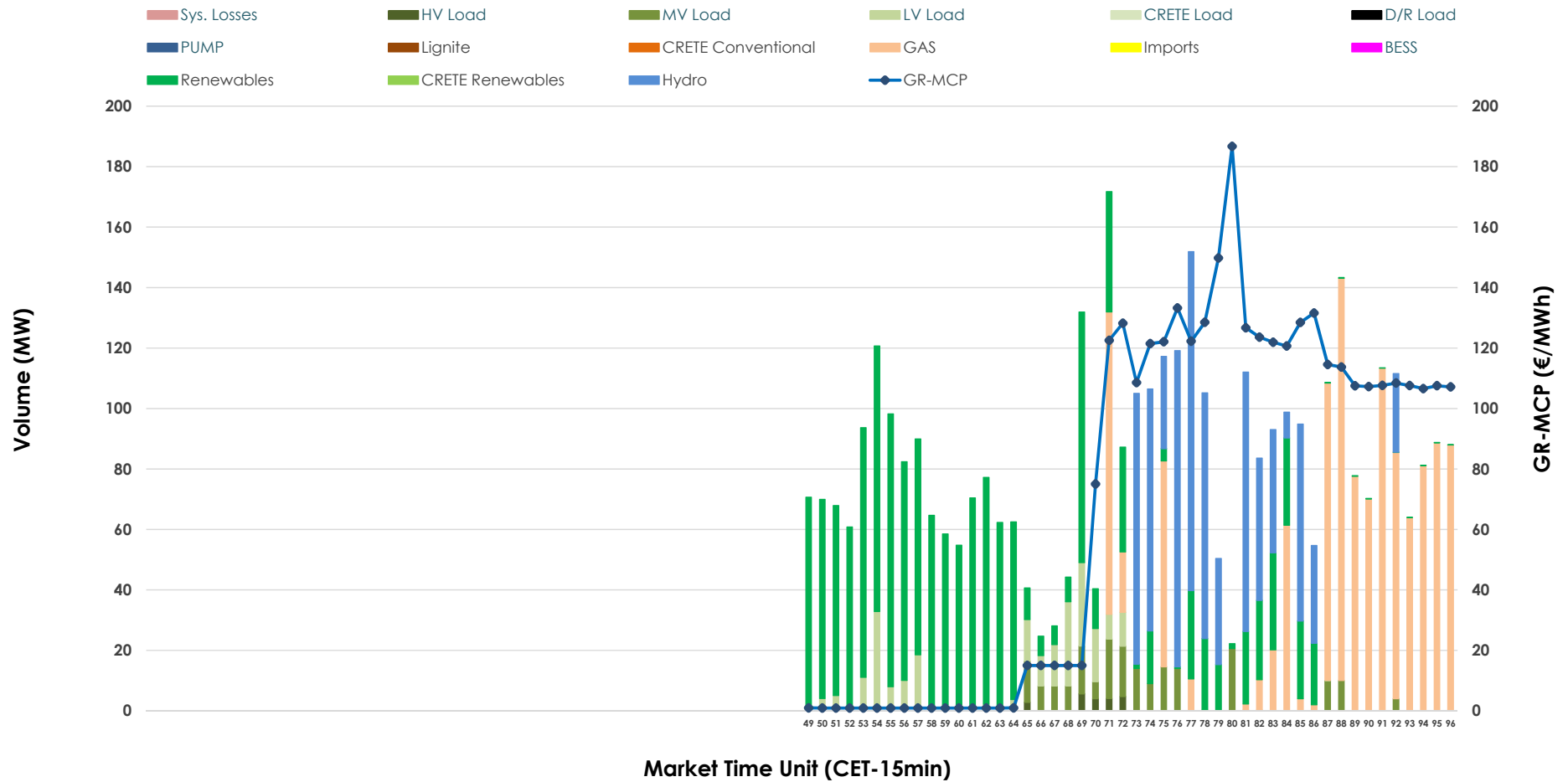


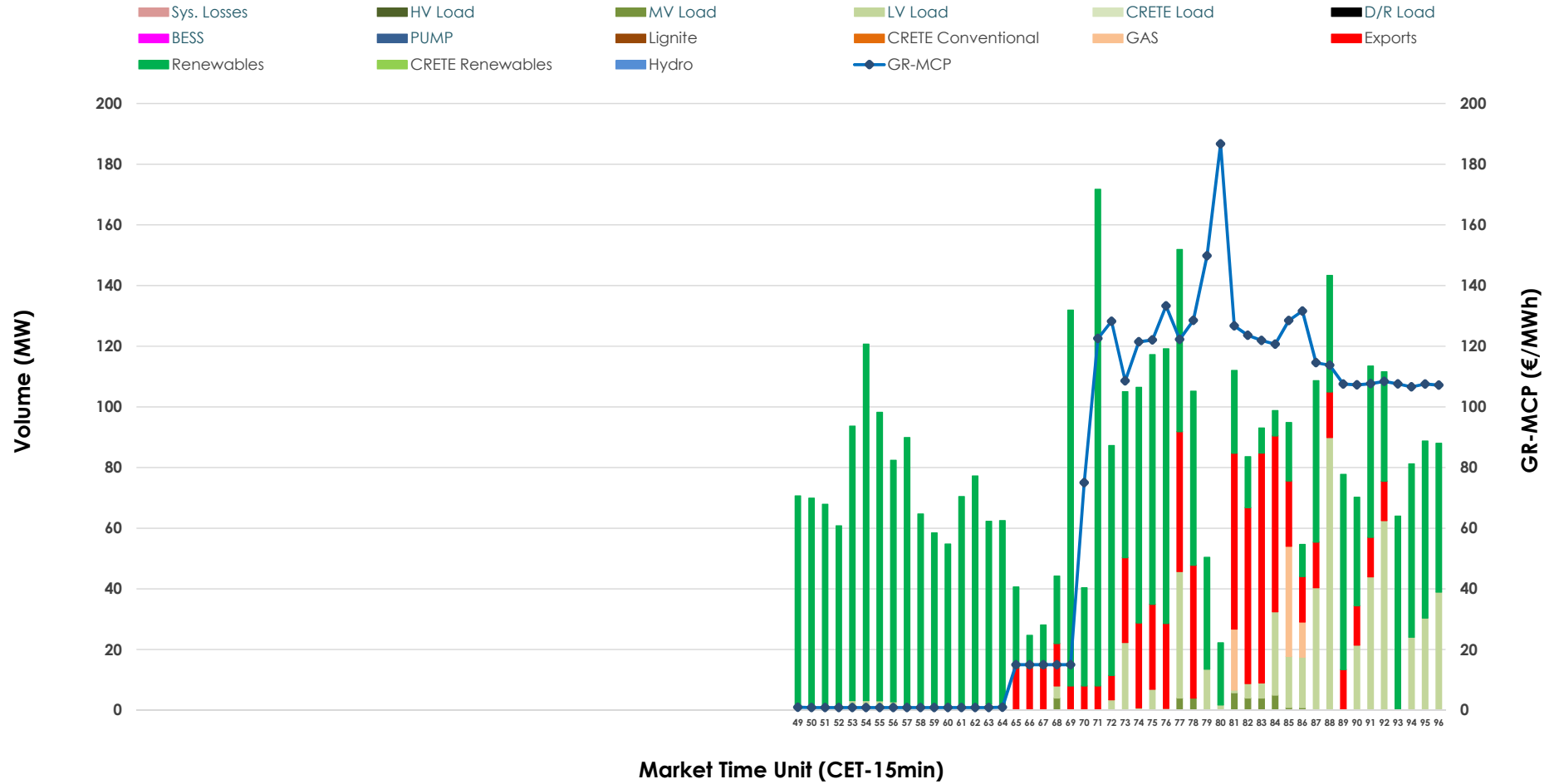


IDA '3' Market Outlook

12.05.2026 IDA '3' Market - Sell



12.05.2026 IDA '3' Market - Buy



GR Bidding Zone Weekly Figures

Delivery Day	06.05	07.05	08.05	09.05	10.05	11.05	12.05
	👇 -12%	👆 22%	👇 -3%	👇 -24%	👇 -5%	👆 24%	👇 -36%
Avg.MCP (€/MWh)	102.41	124.57	120.81	91.75	87.28	108.59	69.35
Max.MCP (€/MWh)	203.55	174.56	163.91	183.81	163.81	195.45	186.70
Min.MCP (€/MWh)	-8.92	100.57	70.07	-5.00	4.99	20.00	0.90
	👆 56%	👆 54%	👇 -43%	👇 -21%	👆 2%	👆 73%	👆 4%
Tot.Vol(GWh)	1.58	2.43	1.39	1.10	1.13	1.95	2.02

Trades by Order Type

Delivery Day		06.05	07.05	08.05	09.05	10.05	11.05	12.05	
Ord Price Type		Sell & Buy Trades in (GWh) per Price Type							(%)
PPT	(S)	0.000	0.000	0.000	0.000	0.000	0.000	0.000	0.00%
HBD	(S)	0.529	0.750	0.592	0.537	0.502	0.661	1.009	100.00%
BLK	(S)	0.000	0.000	0.000	0.000	0.000	0.000	0.000	0.00%
CPL	(S)	0.261	0.465	0.103	0.013	0.062	0.312	0.000	0.00%
PPT	(B)	0.000	0.000	0.000	0.000	0.000	0.000	0.000	0.00%
HBD	(B)	0.761	0.929	0.466	0.543	0.531	0.736	0.844	83.68%
BLK	(B)	0.000	0.000	0.000	0.000	0.000	0.000	0.000	0.00%
CPL	(B)	0.029	0.286	0.229	0.007	0.033	0.237	0.165	16.32%
		Sell & Buy Orders Traded per Price Type							(%)
PPT	(S)	0	0	0	0	0	0	0	0.00%
HBD	(S)	100	163	164	105	204	203	185	100.00%
BLK	(S)	0	0	0	0	0	0	0	0.00%
PPT	(B)	0	0	0	0	0	0	0	0.00%
HBD	(B)	154	223	198	261	169	135	115	100.00%
BLK	(B)	0	0	0	0	0	0	0	0.00%

- MCP** Market Clearing Price (€/MWh)
- PPT** Priority Price-Taking
- HBD** Hybrid
- BLK** Block
- CPL** Market Coupling Flow

Trade's Volume Mix

	Sell - MWh	Buy - MWh	
Lignite (0.0%)	0	0	(0.0%)
Crete Conv. (0.0%)	0	0	(0.0%)
Gas (29.6%)	298	17	(1.7%)
Hydro (20.8%)	210	0	(0.0%)
Imports (0.0%)	0		
RES (38.6%)	389	683	(67.7%)
Crete RES (0.0%)	0	0	(0.0%)
BESS (0.0%)	0	0	(0.0%)
HV Load (0.5%)	5	0	(0.0%)
MV Load (4.8%)	48	8	(0.8%)
LV Load (5.8%)	58	136	(13.5%)
Crete Load (0.0%)	0	0	(0.0%)
Pumping (0.0%)	0	0	(0.0%)
Exports		165	(16.3%)
Sys.Losses (0.0%)	0	0	(0.0%)
D/R Load (0.0%)	0	0	(0.0%)

