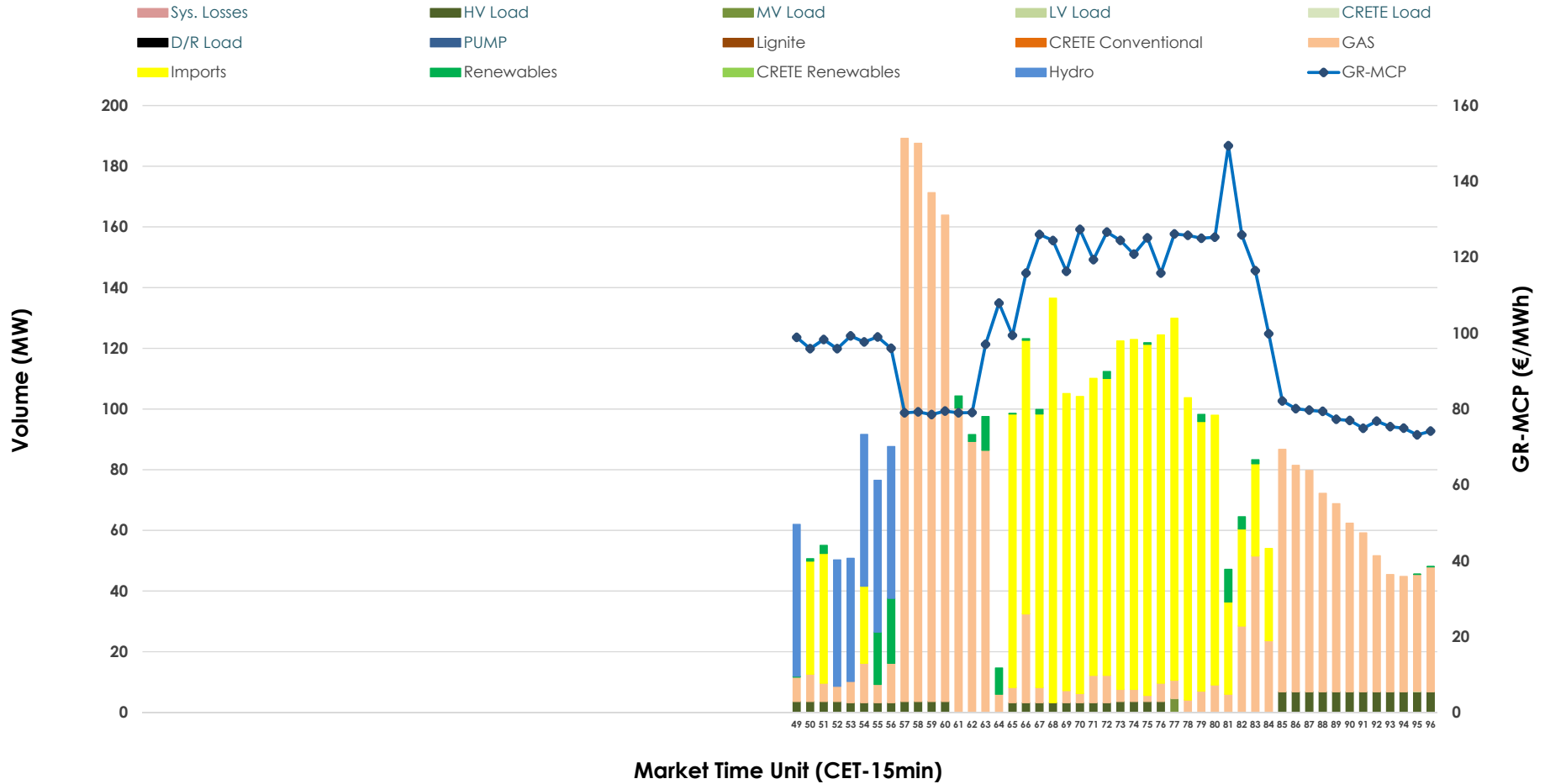


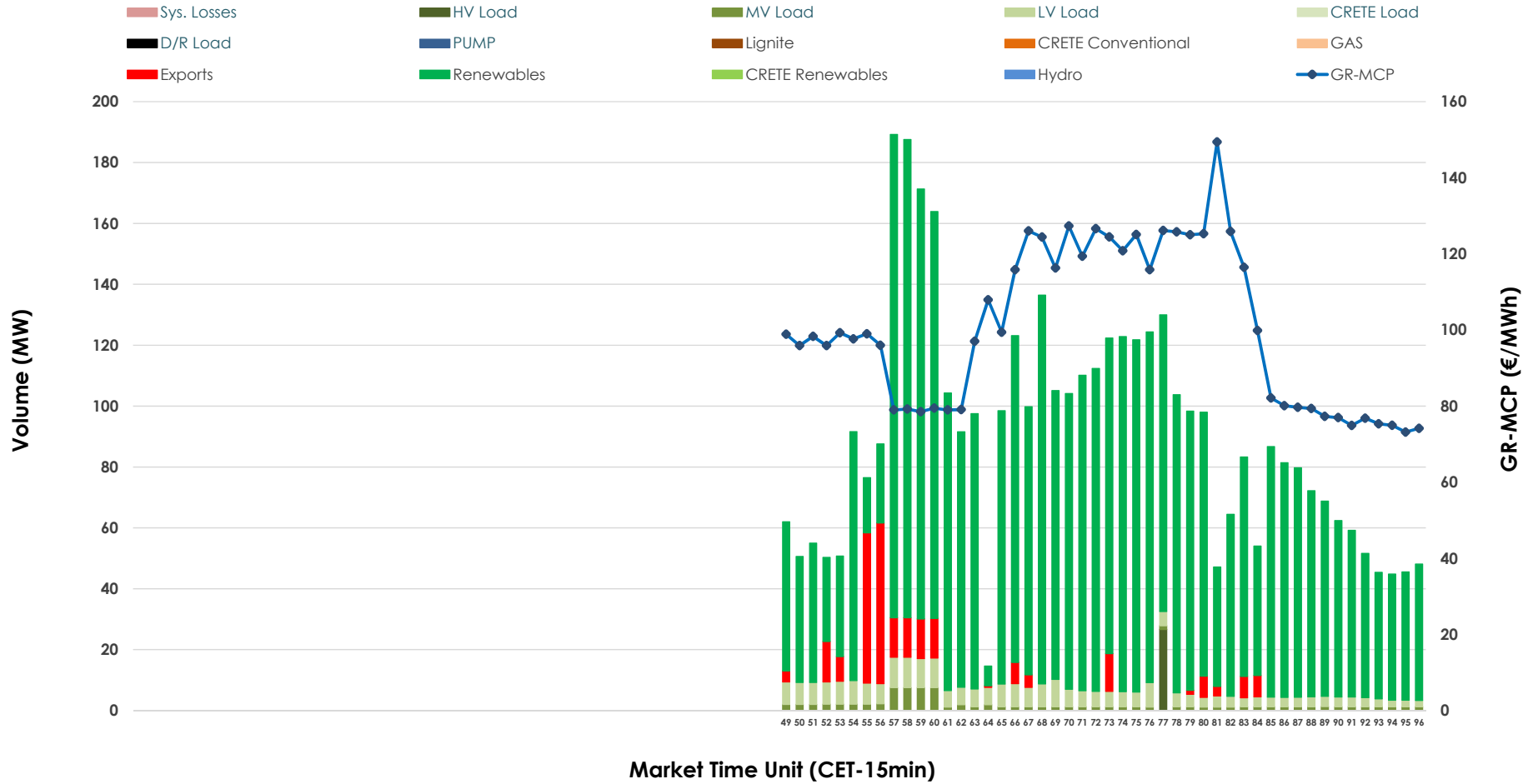


# IDA '3' Market Outlook

11.01.2026 IDA '3' Market - Sell



### 11.01.2026 IDA '3' Market - Buy



### GR Bidding Zone Weekly Figures

Delivery Day	05.01	06.01	07.01	08.01	09.01	10.01	11.01
	↑ 38%	↓ -25%	↓ -7%	↑ 14%	↑ 20%	↓ -20%	↑ 6%
<b>Avg.MCP (€/MWh)</b>	125.21	93.64	86.83	98.64	118.78	95.11	100.42
<b>Max.MCP (€/MWh)</b>	223.41	159.04	129.54	186.83	161.52	138.90	149.40
<b>Min.MCP (€/MWh)</b>	87.77	54.86	57.83	11.00	68.88	9.09	73.18
	↓ -29%	↑ 78%	↑ 15%	↓ -63%	↑ 181%	↓ -24%	↓ -13%
<b>Tot.Vol(GWh)</b>	1.55	2.77	3.19	1.17	3.29	2.51	2.17

### Trades by Order Type

Delivery Day		05.01	06.01	07.01	08.01	09.01	10.01	11.01	
<b>Ord Price Type</b>		<b>Sell &amp; Buy Trades in (GWh) per Price Type</b>							<b>(%)</b>
<b>PPT (S)</b>	(S)	0.000	0.000	0.000	0.000	0.000	0.000	0.000	0.00%
<b>HBD (S)</b>	(S)	0.698	1.383	1.596	0.327	1.453	0.805	0.617	56.74%
<b>BLK (S)</b>	(S)	0.000	0.000	0.000	0.000	0.000	0.000	0.000	0.00%
<b>CPL (S)</b>	(S)	0.078	0.000	0.000	0.260	0.194	0.450	0.470	43.26%
<b>PPT (B)</b>	(B)	0.000	0.000	0.000	0.000	0.000	0.000	0.000	0.00%
<b>HBD (B)</b>	(B)	0.215	0.163	0.781	0.389	1.237	1.222	1.030	94.74%
<b>BLK (B)</b>	(B)	0.000	0.000	0.000	0.000	0.000	0.000	0.000	0.00%
<b>CPL (B)</b>	(B)	0.562	1.220	0.815	0.198	0.410	0.033	0.057	5.26%
		<b>Sell &amp; Buy Orders Traded per Price Type</b>							<b>(%)</b>
<b>PPT (S)</b>	(S)	0	0	0	0	0	0	0	0.00%
<b>HBD (S)</b>	(S)	193	199	147	150	124	193	87	100.00%
<b>BLK (S)</b>	(S)	0	0	0	0	0	0	0	0.00%
<b>PPT (B)</b>	(B)	0	0	0	0	0	0	0	0.00%
<b>HBD (B)</b>	(B)	91	116	240	125	310	237	388	100.00%
<b>BLK (B)</b>	(B)	0	0	0	0	0	0	0	0.00%

- MCP** Market Clearing Price (€/MWh)
- PPT** Priority Price-Taking
- HBD** Hybrid
- BLK** Block
- CPL** Market Coupling Flow

### Trade's Volume Mix

	Sell - MWh	Buy - MWh	
<b>Lignite</b> (0.0%)	0	0	(0.0%)
<b>Crete Conv.</b> (0.0%)	0	0	(0.0%)
<b>Gas</b> (44.3%)	482	0	(0.0%)
<b>Hydro</b> (6.5%)	71	0	(0.0%)
<b>Imports</b> (43.3%)	470		
<b>RES</b> (2.1%)	23	935	(86.0%)
<b>Crete RES</b> (0.0%)	0	0	(0.0%)
<b>HV Load</b> (3.8%)	41	7	(0.6%)
<b>MV Load</b> (0.1%)	1	23	(2.1%)
<b>LV Load</b> (0.0%)	0	66	(6.0%)
<b>Crete Load</b> (0.0%)	0	0	(0.0%)
<b>Pumping</b> (0.0%)	0	0	(0.0%)
<b>Exports</b>		57	(5.3%)
<b>Sys.Losses</b> (0.0%)	0	0	(0.0%)
<b>D/R Load</b> (0.0%)	0	0	(0.0%)

