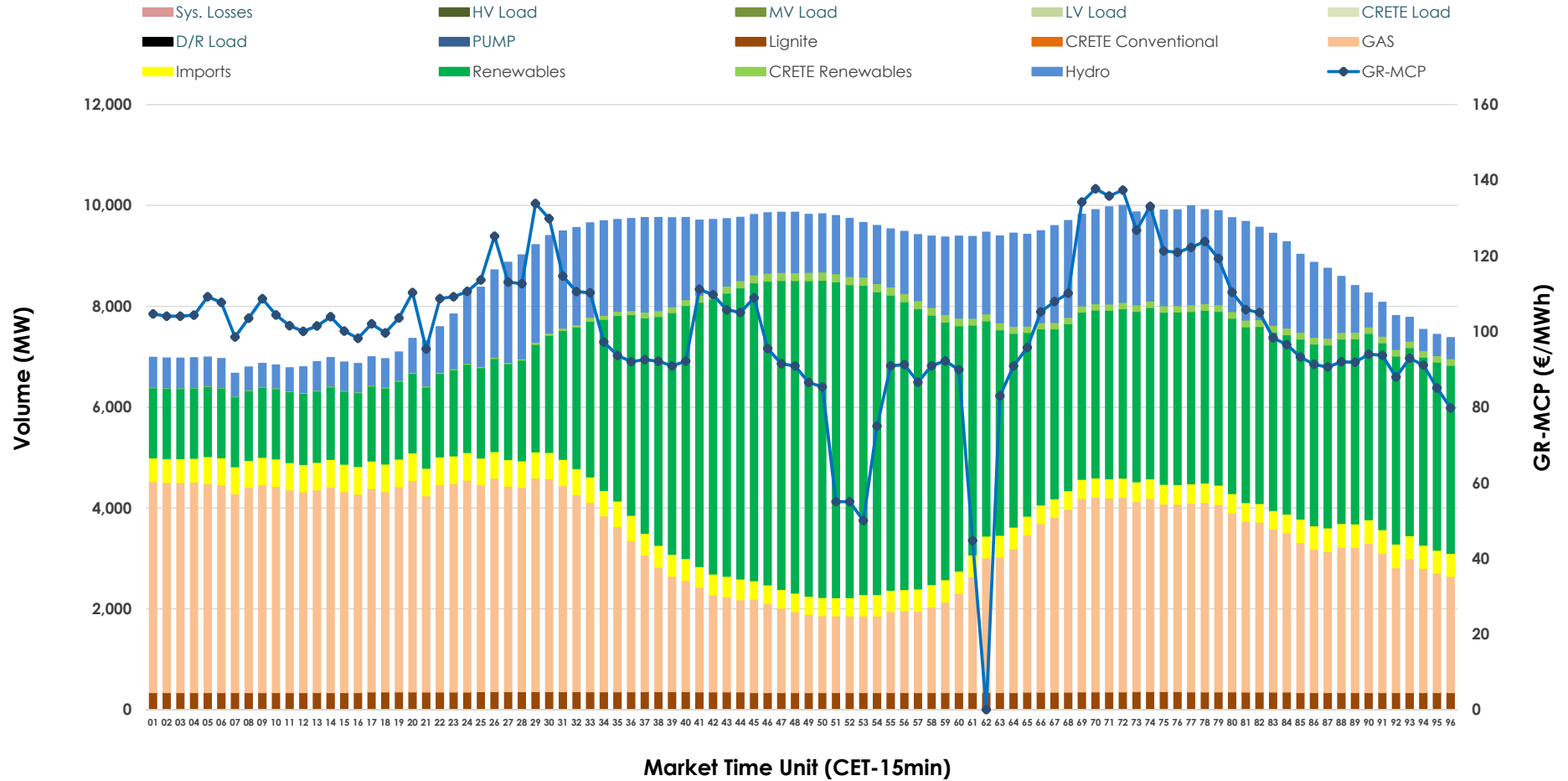


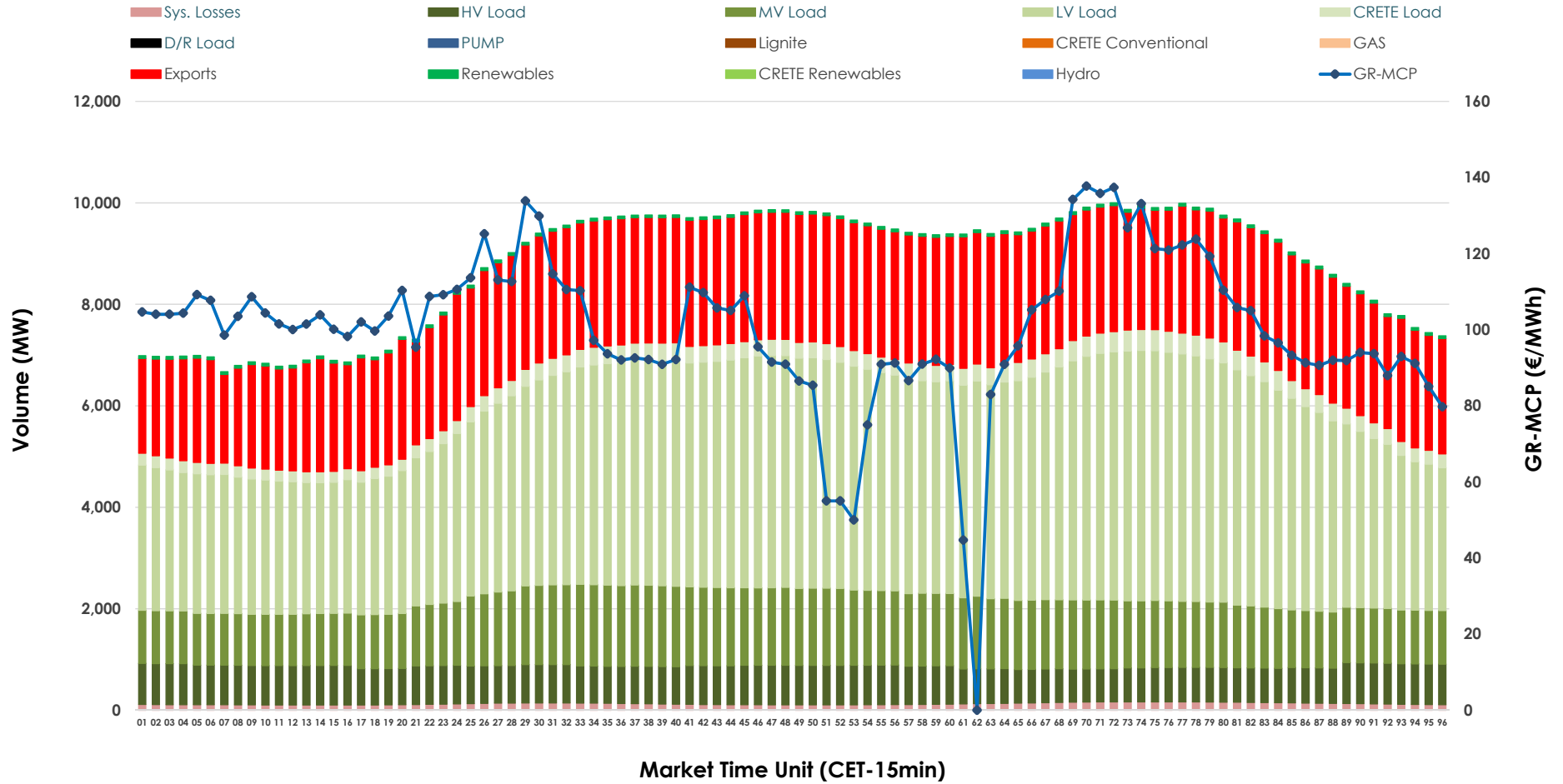


Day-Ahead Market Outlook

04.02.2026 Day-Ahead Market - Sell



04.02.2026 Day-Ahead Market - Buy



GR Bidding Zone Weekly Figures

Delivery Day	29.01	30.01	31.01	01.02	02.02	03.02	04.02
	↗ 2%	↘ 1%	↗ 8%	↘ -4%	↗ 20%	↘ 0%	↘ -18%
Avg.MCP (€/MWh)	96.93	97.48	105.72	101.14	121.82	121.82	100.27
Max.MCP (€/MWh)	178.52	162.33	155.04	134.83	246.62	216.88	137.73
Min.MCP (€/MWh)	0.01	32.69	47.50	60.00	89.15	77.88	0.01
	↗ 0%	↘ -4%	↘ -5%	↘ -2%	↗ 12%	↘ -2%	↗ 0%
Tot.Vol(GWh)	427.94	410.83	391.47	383.04	429.13	420.24	422.19

Trades by Order Type

Delivery Day		29.01	30.01	31.01	01.02	02.02	03.02	04.02	
Ord Price Type		Sell & Buy Trades in (GWh) per Price Type							(%)
PPT	(S)	103.603	94.378	86.154	93.785	94.401	86.646	99.050	46.92%
HBD	(S)	69.885	77.379	63.490	61.041	73.737	71.789	71.845	34.03%
BLK	(S)	40.479	33.660	46.080	34.935	44.589	48.842	40.198	19.04%
CPL	(S)	0.000	0.000	0.010	1.760	1.837	2.844	0.000	0.00%
PPT	(B)	14.595	14.582	13.273	12.883	14.412	14.445	13.914	6.59%
HBD	(B)	154.909	149.993	144.217	139.193	157.240	156.715	151.872	71.95%
BLK	(B)	0.000	0.000	0.000	0.000	0.000	0.000	0.000	0.00%
CPL	(B)	44.464	40.843	38.244	39.446	42.912	38.961	45.307	21.46%
		Sell & Buy Orders Traded per Price Type							(%)
PPT	(S)	2169	2166	2238	2123	2177	2232	2251	44.45%
HBD	(S)	2630	2758	2948	2632	2732	2988	2798	55.25%
BLK	(S)	19	15	17	18	19	15	15	0.30%
PPT	(B)	2270	2272	2230	2337	2229	2216	2234	35.92%
HBD	(B)	3992	4044	3974	3890	3882	3884	3985	64.08%
BLK	(B)	0	0	0	0	0	0	0	0.00%

MCP Market Clearing Price (€/MWh)
PPT Priority Price-Taking
HBD Hybrid
BLK Block
CPL Market Coupling Flow

Trade's Volume Mix

		Sell - MWh	Buy - MWh	
Lignite	(4.0%)	8,344	0	(0.0%)
Crete Conv.	(0.0%)	0	0	(0.0%)
Gas	(35.9%)	75,696	0	(0.0%)
Hydro	(14.7%)	31,084	0	(0.0%)
Imports	(5.2%)	10,927		
RES	(39.2%)	82,689	1,278	(0.6%)
Crete RES	(1.1%)	2,352	0	(0.0%)
HV Load	(0.0%)	0	17,794	(8.4%)
MV Load	(0.0%)	0	31,281	(14.8%)
LV Load	(0.0%)	0	93,124	(44.1%)
Crete Load	(0.0%)	0	7,517	(3.6%)
Pumping	(0.0%)	0	0	(0.0%)
Exports			57,050	(27.0%)
Sys.Losses	(0.0%)	0	3,048	(1.4%)
D/R Load	(0.0%)	0	0	(0.0%)

