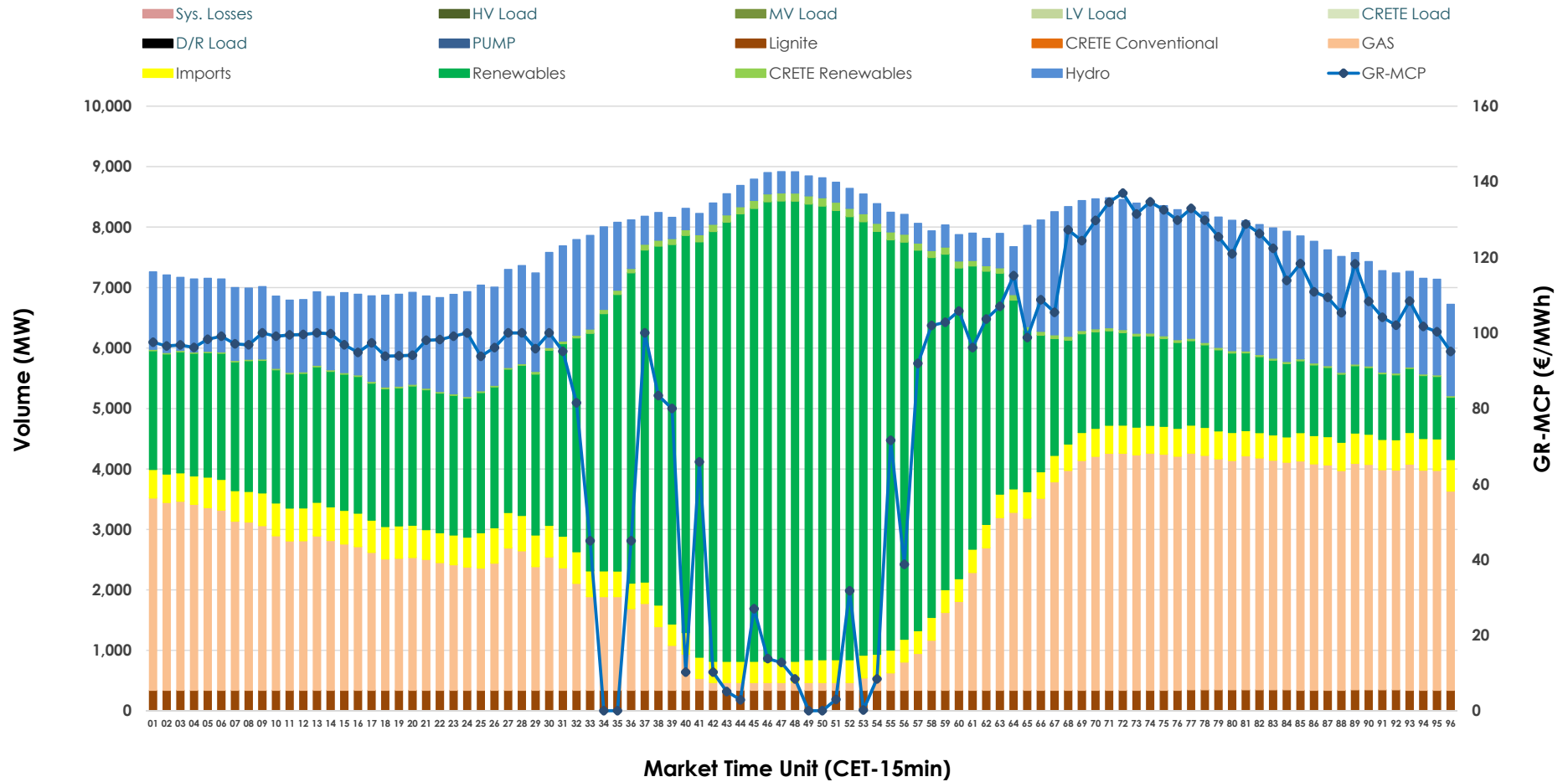


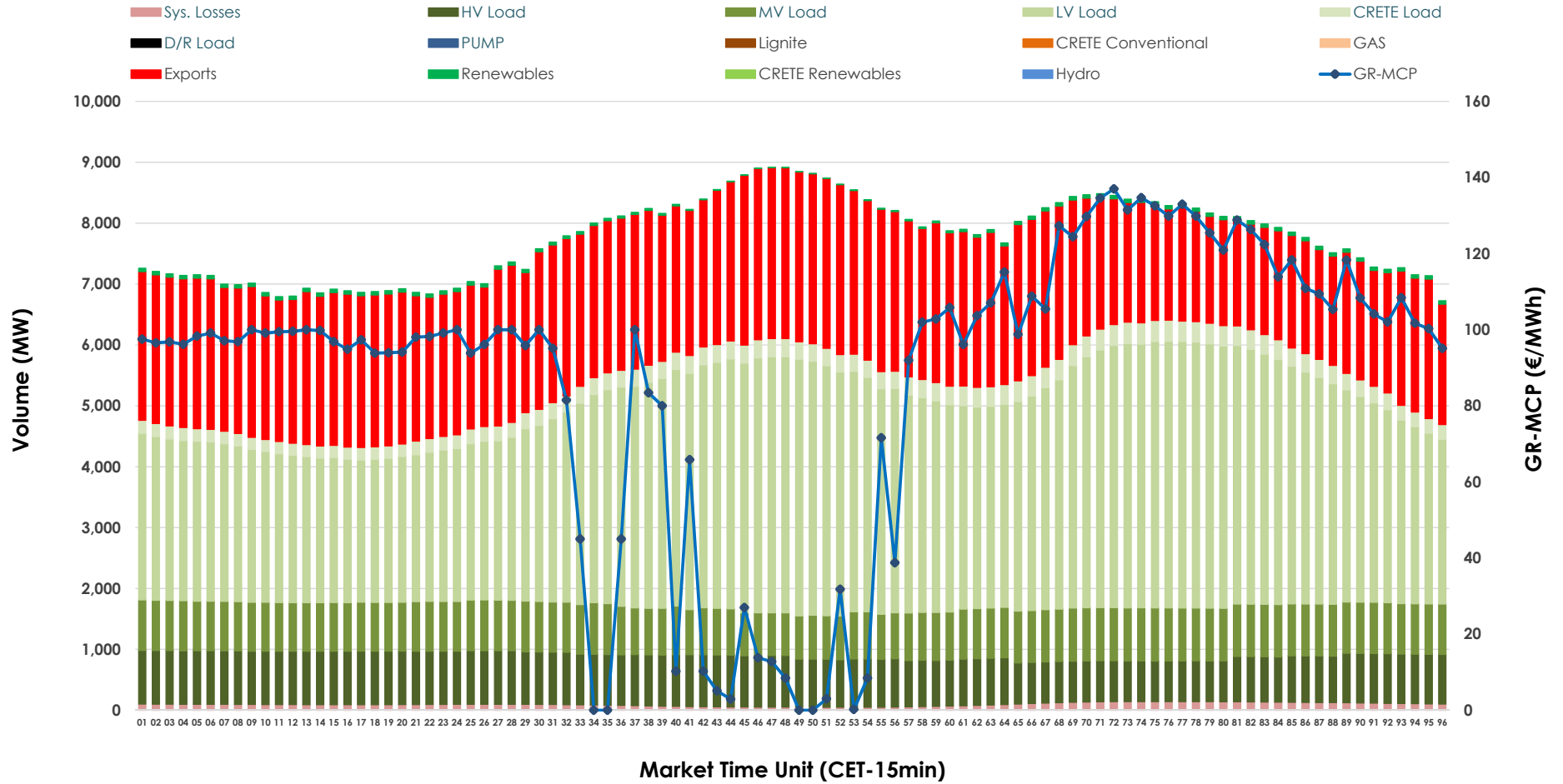


Day-Ahead Market Outlook

08.02.2026 Day-Ahead Market - Sell



08.02.2026 Day-Ahead Market - Buy



GR Bidding Zone Weekly Figures

| Delivery Day | 02.02 | 03.02 | 04.02 | 05.02 | 06.02 | 07.02 | 08.02 |
|------------------------|--------|--------|--------|--------|--------|--------|--------|
| | ↗ 20% | ↘ 0% | ↘ -18% | ↗ 1% | ↘ -5% | ↘ -28% | ↗ 26% |
| Avg.MCP (€/MWh) | 121.82 | 121.82 | 100.27 | 101.12 | 96.42 | 69.15 | 87.19 |
| Max.MCP (€/MWh) | 246.62 | 216.88 | 137.73 | 158.84 | 143.87 | 138.17 | 137.01 |
| Min.MCP (€/MWh) | 89.15 | 77.88 | 0.01 | 52.50 | 0.10 | -0.10 | 0.01 |
| | ↗ 12% | ↘ -2% | ↗ 0% | ↗ 1% | ↘ -3% | ↘ -6% | ↘ -4% |
| Tot.Vol(GWh) | 429.13 | 420.24 | 422.19 | 425.83 | 412.48 | 387.98 | 372.80 |

Trades by Order Type

| Delivery Day | | 02.02 | 03.02 | 04.02 | 05.02 | 06.02 | 07.02 | 08.02 | |
|-----------------------|-----|--|---------|---------|---------|---------|---------|---------|------------|
| Ord Price Type | | Sell & Buy Trades in (GWh) per Price Type | | | | | | | (%) |
| PPT | (S) | 94.401 | 86.646 | 99.050 | 100.032 | 98.643 | 97.391 | 90.104 | 48.34% |
| HBD | (S) | 73.737 | 71.789 | 71.845 | 75.250 | 72.470 | 75.676 | 70.823 | 38.00% |
| BLK | (S) | 44.589 | 48.842 | 40.198 | 37.633 | 32.126 | 20.926 | 25.473 | 13.67% |
| CPL | (S) | 1.837 | 2.844 | 0.000 | 0.000 | 3.000 | 0.000 | 0.000 | 0.00% |
| PPT | (B) | 14.412 | 14.445 | 13.914 | 13.913 | 13.578 | 13.223 | 13.616 | 7.30% |
| HBD | (B) | 157.240 | 156.715 | 151.872 | 152.005 | 148.188 | 135.733 | 132.020 | 70.83% |
| BLK | (B) | 0.000 | 0.000 | 0.000 | 0.000 | 0.000 | 0.000 | 0.000 | 0.00% |
| CPL | (B) | 42.912 | 38.961 | 45.307 | 46.997 | 44.473 | 45.036 | 40.764 | 21.87% |
| | | Sell & Buy Orders Traded per Price Type | | | | | | | (%) |
| PPT | (S) | 2177 | 2232 | 2251 | 2154 | 2193 | 2220 | 2129 | 44.01% |
| HBD | (S) | 2732 | 2988 | 2798 | 2809 | 2799 | 2348 | 2697 | 55.76% |
| BLK | (S) | 19 | 15 | 15 | 13 | 13 | 8 | 11 | 0.23% |
| PPT | (B) | 2229 | 2216 | 2234 | 2227 | 2220 | 2356 | 2334 | 35.72% |
| HBD | (B) | 3882 | 3884 | 3985 | 3881 | 4062 | 4294 | 4200 | 64.28% |
| BLK | (B) | 0 | 0 | 0 | 0 | 0 | 0 | 0 | 0.00% |

MCP Market Clearing Price (€/MWh)
PPT Priority Price-Taking
HBD Hybrid
BLK Block
CPL Market Coupling Flow

Trade's Volume Mix

| | | Sell - MWh | Buy - MWh | |
|--------------------|---------|------------|-----------|---------|
| Lignite | (4.4%) | 8,187 | 0 | (0.0%) |
| Crete Conv. | (0.0%) | 0 | 0 | (0.0%) |
| Gas | (30.0%) | 55,982 | 0 | (0.0%) |
| Hydro | (16.6%) | 30,923 | 0 | (0.0%) |
| Imports | (5.9%) | 10,945 | | |
| RES | (42.3%) | 78,922 | 1,041 | (0.6%) |
| Crete RES | (0.8%) | 1,440 | 0 | (0.0%) |
| HV Load | (0.0%) | 0 | 19,306 | (10.4%) |
| MV Load | (0.0%) | 0 | 19,518 | (10.5%) |
| LV Load | (0.0%) | 0 | 81,183 | (43.6%) |
| Crete Load | (0.0%) | 0 | 6,622 | (3.6%) |
| Pumping | (0.0%) | 0 | 0 | (0.0%) |
| Exports | | | 56,436 | (30.3%) |
| Sys.Losses | (0.0%) | 0 | 2,293 | (1.2%) |
| D/R Load | (0.0%) | 0 | 0 | (0.0%) |

