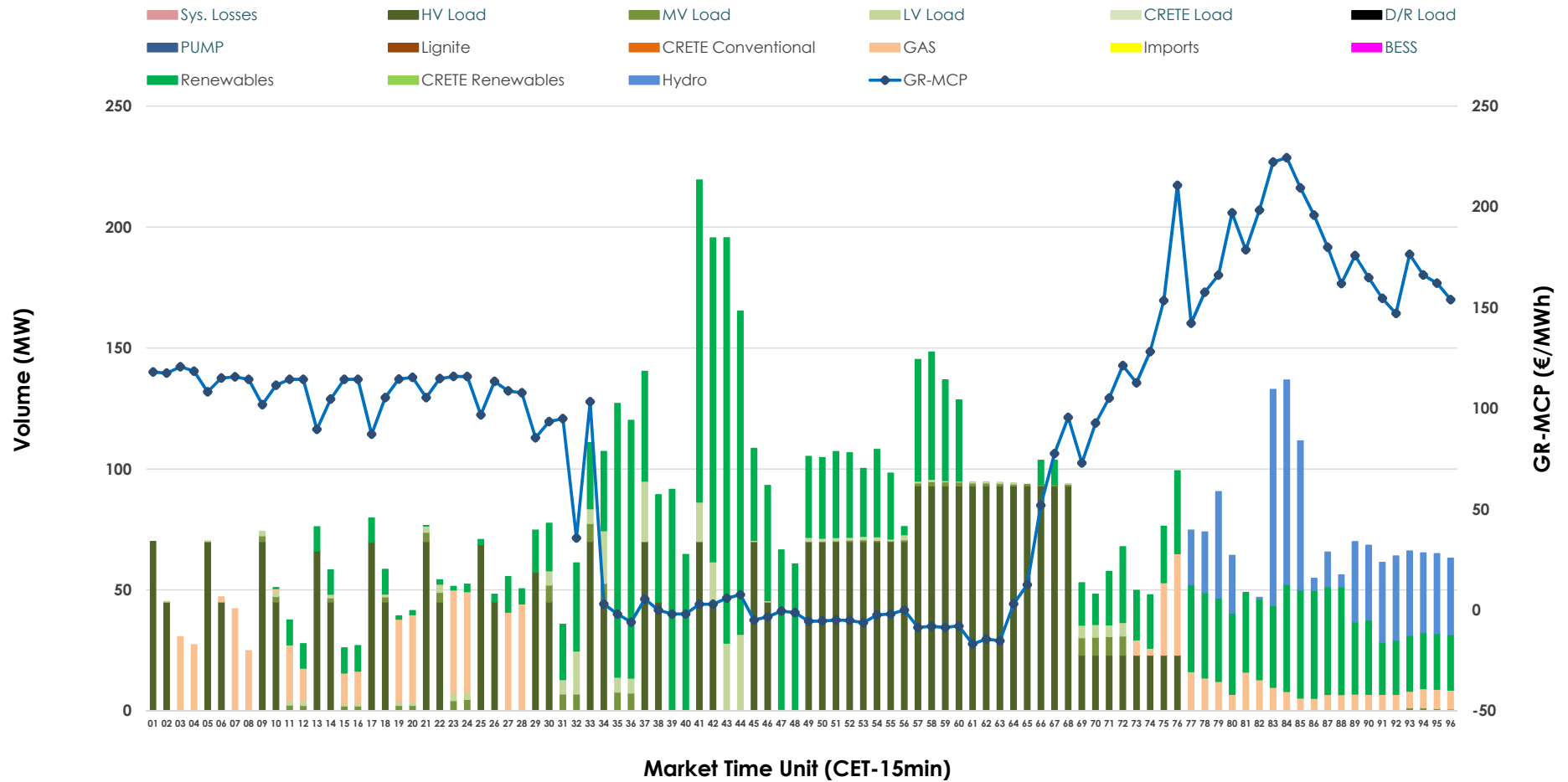


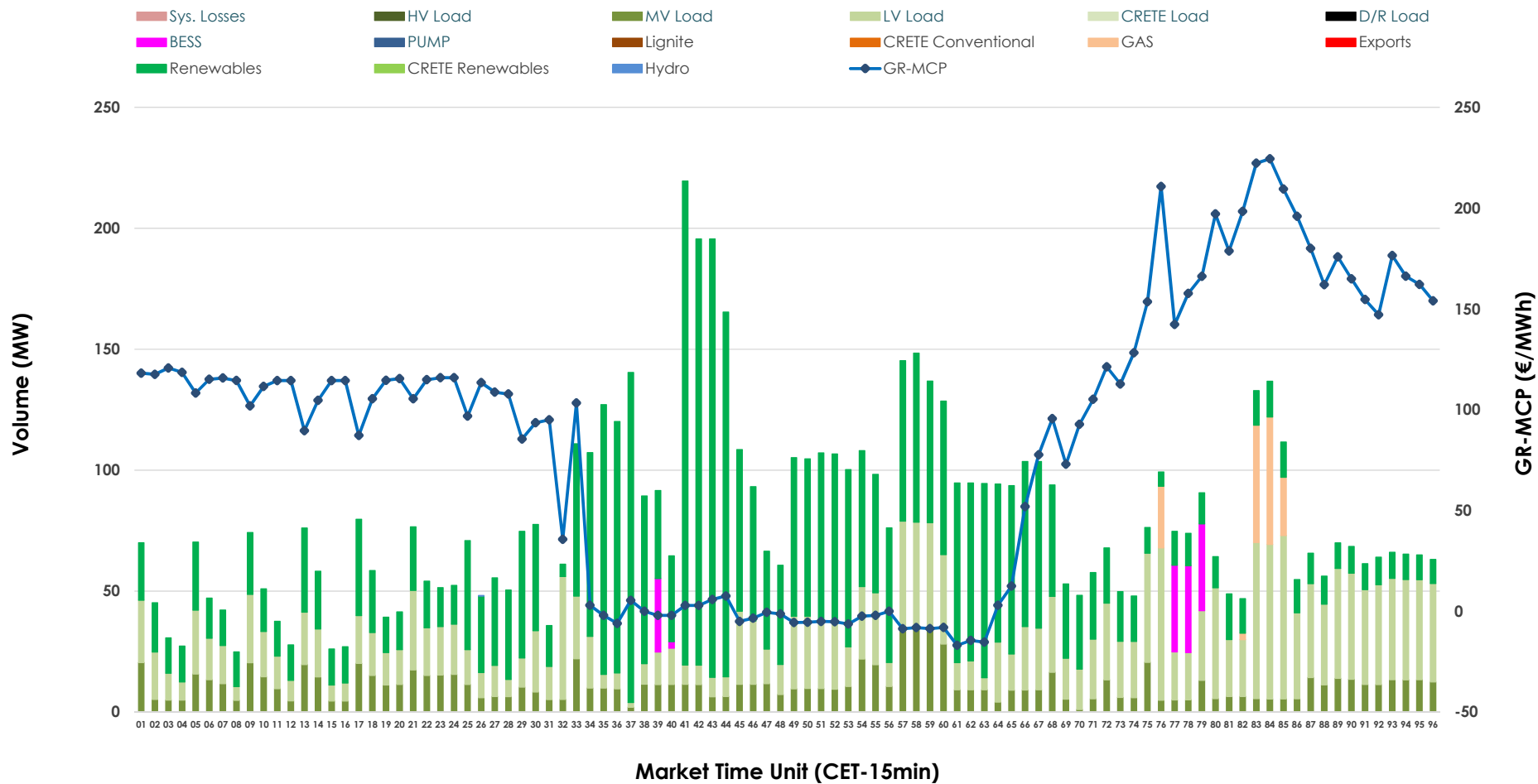


IDA '1' Market Outlook

21.05.2026 IDA '1' Market - Sell



21.05.2026 IDA '1' Market - Buy



GR Bidding Zone Weekly Figures

Delivery Day	15.05	16.05	17.05	18.05	19.05	20.05	21.05
	➔ 0%	👇 -14%	👇 -5%			👇 -48%	👆 26%
Avg.MCP (€/MWh)	91.30	78.20	73.99	N/M	130.04	67.48	85.17
Max.MCP (€/MWh)	178.58	130.66	168.63	N/M	248.28	209.51	224.45
Min.MCP (€/MWh)	-4.99	-4.75	-4.52	N/M	72.72	-9.66	-16.86
	👇 -14%	👆 69%	👇 -9%			👆 17%	➔ -1%
Tot.Vol(GWh)	2.44	4.12	3.74	N/M	3.33	3.89	3.87

Trades by Order Type

Delivery Day		15.05	16.05	17.05	18.05	19.05	20.05	21.05	
Ord Price Type		Sell & Buy Trades in (GWh) per Price Type							(%)
PPT	(S)	0.000	0.000	0.000		0.000	0.000	0.000	0.00%
HBD	(S)	1.004	1.800	1.492		0.966	1.790	1.934	100.00%
BLK	(S)	0.000	0.000	0.000		0.000	0.000	0.000	0.00%
CPL	(S)	0.217	0.262	0.379		0.697	0.156	0.000	0.00%
PPT	(B)	0.000	0.000	0.000		0.000	0.000	0.000	0.00%
HBD	(B)	1.081	1.025	1.845		1.537	1.820	1.934	100.00%
BLK	(B)	0.000	0.000	0.000		0.000	0.000	0.000	0.00%
CPL	(B)	0.140	1.037	0.027		0.126	0.126	0.000	0.00%
		Sell & Buy Orders Traded per Price Type							(%)
PPT	(S)	0	0	0		0	0	0	0.00%
HBD	(S)	260	224	227		393	388	224	100.00%
BLK	(S)	0	0	0		0	0	0	0.00%
PPT	(B)	0	0	0		0	0	0	0.00%
HBD	(B)	818	663	679		796	684	783	100.00%
BLK	(B)	0	0	0		0	0	0	0.00%

- MCP** Market Clearing Price (€/MWh)
- PPT** Priority Price-Taking
- HBD** Hybrid
- BLK** Block
- CPL** Market Coupling Flow

Trade's Volume Mix

	Sell - MWh	Buy - MWh	
Lignite (0.0%)	0	0	(0.0%)
Crete Conv. (0.0%)	0	0	(0.0%)
Gas (8.9%)	172	38	(2.0%)
Hydro (8.3%)	160	0	(0.0%)
Imports (0.0%)	0		
RES (36.1%)	698	1,004	(51.9%)
Crete RES (0.0%)	0	0	(0.0%)
BESS (0.0%)	0	35	(1.8%)
HV Load (41.6%)	805	0	(0.0%)
MV Load (1.8%)	35	271	(14.0%)
LV Load (3.3%)	64	586	(30.3%)
Crete Load (0.0%)	0	0	(0.0%)
Pumping (0.0%)	0	0	(0.0%)
Exports		0	(0.0%)
Sys.Losses (0.0%)	0	0	(0.0%)
D/R Load (0.0%)	0	0	(0.0%)

