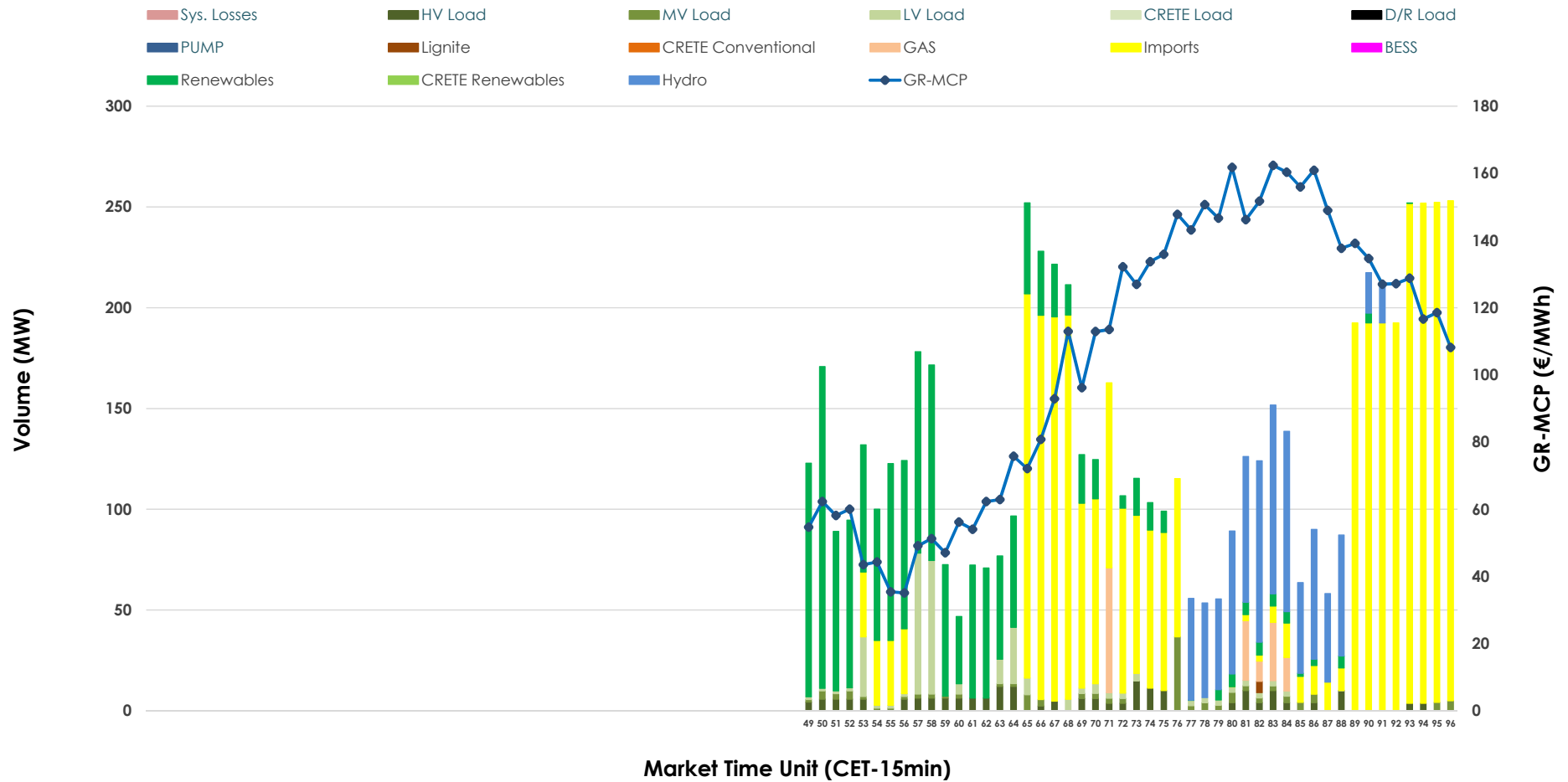


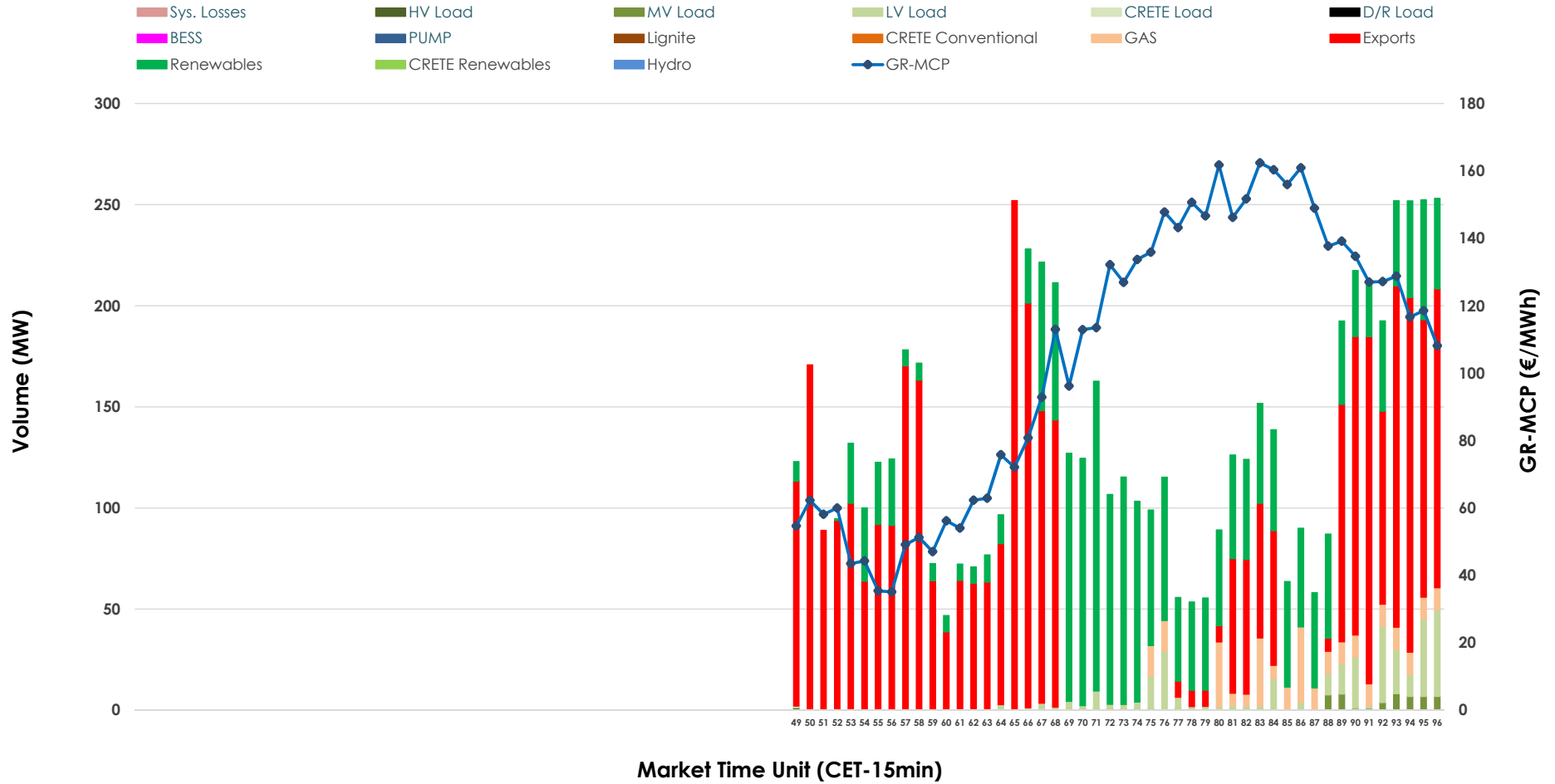


# IDA '3' Market Outlook

11.06.2026 IDA '3' Market - Sell



### 11.06.2026 IDA '3' Market - Buy



### GR Bidding Zone Weekly Figures

Delivery Day	05.06	06.06	07.06	08.06	09.06	10.06	11.06
	↗ 20%	↘ -44%	↔ 0%	↕ 72%	↔ 1%	↗ 5%	↘ -14%
<b>Avg.MCP (€/MWh)</b>	119.09	66.44	66.65	114.70	115.70	121.94	104.93
<b>Max.MCP (€/MWh)</b>	180.60	150.74	149.92	195.70	203.07	197.81	162.38
<b>Min.MCP (€/MWh)</b>	48.90	-32.00	-11.56	6.55	16.45	-6.35	35.10
	↘ -32%	↕ 97%	↘ -38%	↗ 26%	↕ 40%	↘ -13%	↗ 31%
<b>Tot.Vol(GWh)</b>	1.32	2.60	1.62	2.04	2.85	2.48	3.26

### Trades by Order Type

Delivery Day		05.06	06.06	07.06	08.06	09.06	10.06	11.06	
<b>Ord Price Type</b>		<b>Sell &amp; Buy Trades in (GWh) per Price Type</b>							<b>(%)</b>
<b>PPT (S)</b>	(S)	0.000	0.000	0.000	0.000	0.000	0.000	0.000	0.00%
<b>HBD (S)</b>	(S)	0.378	0.223	0.713	0.529	1.346	0.406	0.777	47.61%
<b>BLK (S)</b>	(S)	0.000	0.000	0.000	0.000	0.000	0.000	0.000	0.00%
<b>CPL (S)</b>	(S)	0.282	1.079	0.097	0.492	0.081	0.836	0.855	52.39%
<b>PPT (B)</b>	(B)	0.000	0.000	0.000	0.000	0.000	0.000	0.000	0.00%
<b>HBD (B)</b>	(B)	0.504	1.301	0.500	1.007	0.618	0.618	0.702	43.01%
<b>BLK (B)</b>	(B)	0.000	0.000	0.000	0.000	0.000	0.000	0.000	0.00%
<b>CPL (B)</b>	(B)	0.156	0.000	0.310	0.014	0.809	0.625	0.930	56.99%
		<b>Sell &amp; Buy Orders Traded per Price Type</b>							<b>(%)</b>
<b>PPT (S)</b>	(S)	0	0	0	0	0	0	0	0.00%
<b>HBD (S)</b>	(S)	238	58	79	133	237	156	168	100.00%
<b>BLK (S)</b>	(S)	0	0	0	0	0	0	0	0.00%
<b>PPT (B)</b>	(B)	0	0	0	0	0	0	0	0.00%
<b>HBD (B)</b>	(B)	216	273	172	255	274	245	229	100.00%
<b>BLK (B)</b>	(B)	0	0	0	0	0	0	0	0.00%

- MCP** Market Clearing Price (€/MWh)
- PPT** Priority Price-Taking
- HBD** Hybrid
- BLK** Block
- CPL** Market Coupling Flow

### Trade's Volume Mix

	Sell - MWh	Buy - MWh	
<b>Lignite</b> (0.1%)	1	0	(0.0%)
<b>Crete Conv.</b> (0.0%)	0	0	(0.0%)
<b>Gas</b> (2.3%)	37	68	(4.2%)
<b>Hydro</b> (12.4%)	203	0	(0.0%)
<b>Imports</b> (52.4%)	855		
<b>RES</b> (23.4%)	383	538	(33.0%)
<b>Crete RES</b> (0.0%)	0	0	(0.0%)
<b>BESS</b> (0.0%)	0	0	(0.0%)
<b>HV Load</b> (3.3%)	53	0	(0.0%)
<b>MV Load</b> (1.9%)	32	15	(0.9%)
<b>LV Load</b> (4.2%)	68	81	(4.9%)
<b>Crete Load</b> (0.0%)	0	0	(0.0%)
<b>Pumping</b> (0.0%)	0	0	(0.0%)
<b>Exports</b>		930	(57.0%)
<b>Sys.Losses</b> (0.0%)	0	0	(0.0%)
<b>D/R Load</b> (0.0%)	0	0	(0.0%)

