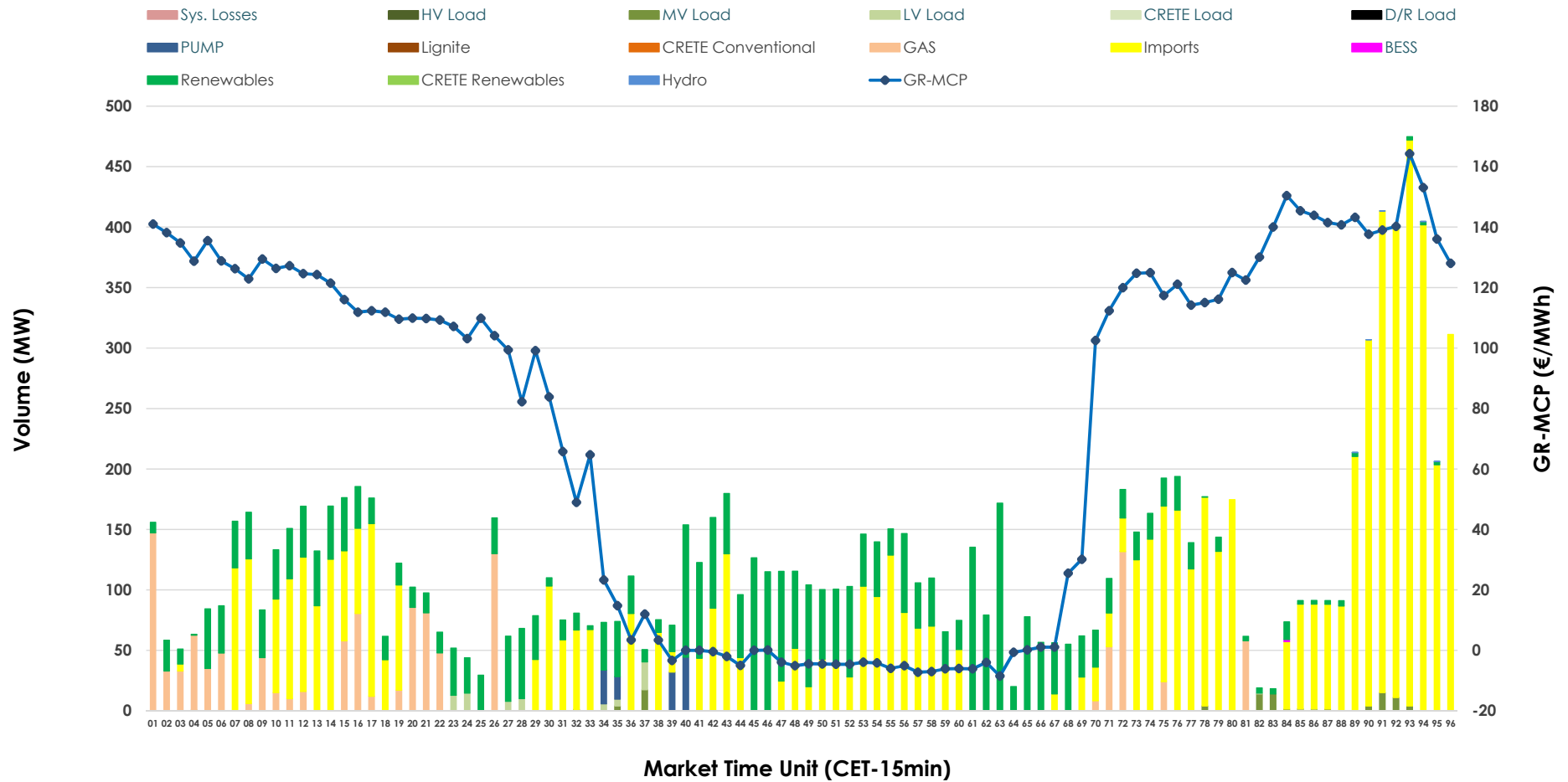


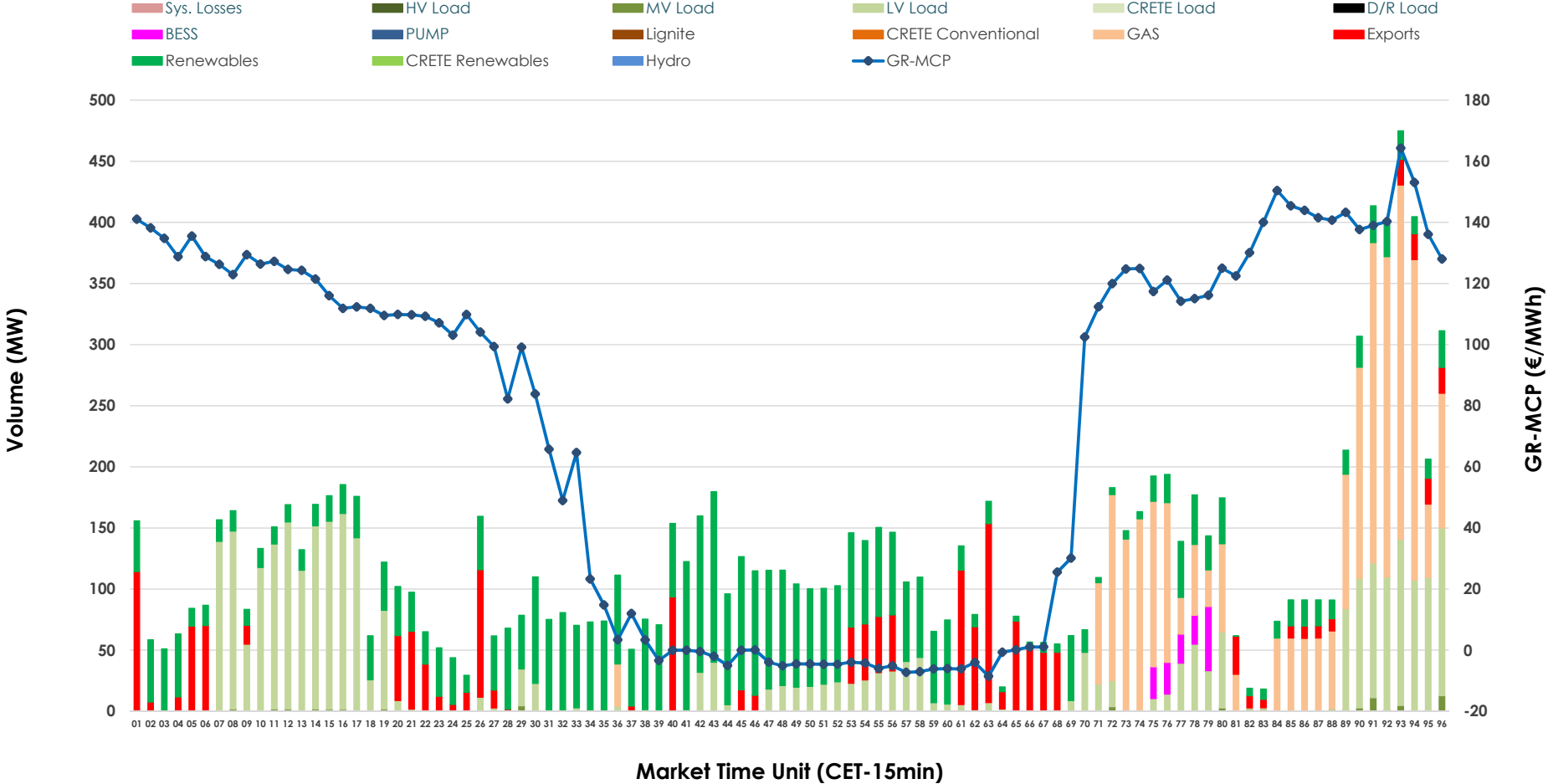


# IDA '2' Market Outlook

04.07.2026 IDA '2' Market - Sell



### 04.07.2026 IDA '2' Market - Buy



### GR Bidding Zone Weekly Figures

Delivery Day	28.06	29.06	30.06	01.07	02.07	03.07	04.07
	👇 -22%	👆 50%	👆 37%	👆 20%	👇 -17%	👇 -31%	👇 -21%
<b>Avg.MCP (€/MWh)</b>	68.04	101.76	139.08	167.17	139.09	95.72	75.31
<b>Max.MCP (€/MWh)</b>	147.37	280.03	509.29	434.88	305.21	173.13	164.28
<b>Min.MCP (€/MWh)</b>	-11.32	-0.38	-9.83	72.11	28.63	6.01	-8.51
	👇 -28%	👇 -15%	👆 6%	👆 26%	➡️ 0%	👆 78%	👇 -21%
<b>Tot.Vol(GWh)</b>	3.83	3.24	3.44	4.35	4.33	7.72	6.06

### Trades by Order Type

Delivery Day		28.06	29.06	30.06	01.07	02.07	03.07	04.07	
<b>Ord Price Type</b>		<b>Sell &amp; Buy Trades in (GWh) per Price Type</b>							<b>(%)</b>
<b>PPT</b>	(S)	0.000	0.000	0.000	0.000	0.000	0.000	0.000	0.00%
<b>HBD</b>	(S)	0.917	1.523	1.318	1.207	1.220	2.152	1.235	40.74%
<b>BLK</b>	(S)	0.000	0.000	0.000	0.000	0.000	0.000	0.000	0.00%
<b>CPL</b>	(S)	0.996	0.095	0.404	0.966	0.946	1.710	1.797	59.26%
<b>PPT</b>	(B)	0.000	0.000	0.000	0.000	0.000	0.000	0.000	0.00%
<b>HBD</b>	(B)	1.685	0.757	1.236	1.788	1.888	2.325	2.622	86.47%
<b>BLK</b>	(B)	0.000	0.000	0.000	0.000	0.000	0.000	0.000	0.00%
<b>CPL</b>	(B)	0.228	0.861	0.486	0.385	0.278	1.537	0.410	13.53%
		<b>Sell &amp; Buy Orders Traded per Price Type</b>							<b>(%)</b>
<b>PPT</b>	(S)	0	0	0	0	0	0	0	0.00%
<b>HBD</b>	(S)	249	424	315	309	223	466	295	100.00%
<b>BLK</b>	(S)	0	0	0	0	0	0	0	0.00%
<b>PPT</b>	(B)	0	0	0	0	0	0	0	0.00%
<b>HBD</b>	(B)	447	250	366	613	569	589	392	100.00%
<b>BLK</b>	(B)	0	0	0	0	0	0	0	0.00%

- MCP** Market Clearing Price (€/MWh)
- PPT** Priority Price-Taking
- HBD** Hybrid
- BLK** Block
- CPL** Market Coupling Flow

### Trade's Volume Mix

	Sell - MWh	Buy - MWh	
<b>Lignite</b> (0.0%)	0	0	(0.0%)
<b>Crete Conv.</b> (0.0%)	0	0	(0.0%)
<b>Gas</b> (10.2%)	309	721	(23.8%)
<b>Hydro</b> (0.0%)	0	0	(0.0%)
<b>Imports</b> (59.3%)	1,797		
<b>RES</b> (28.1%)	851	1,019	(33.6%)
<b>Crete RES</b> (0.0%)	0	0	(0.0%)
<b>BESS</b> (0.0%)	0	38	(1.3%)
<b>HV Load</b> (0.0%)	0	0	(0.0%)
<b>MV Load</b> (0.8%)	24	16	(0.5%)
<b>LV Load</b> (0.7%)	21	828	(27.3%)
<b>Crete Load</b> (0.0%)	0	0	(0.0%)
<b>Pumping</b> (1.0%)	31	0	(0.0%)
<b>Exports</b>		410	(13.5%)
<b>Sys.Losses</b> (0.0%)	0	0	(0.0%)
<b>D/R Load</b> (0.0%)	0	0	(0.0%)

