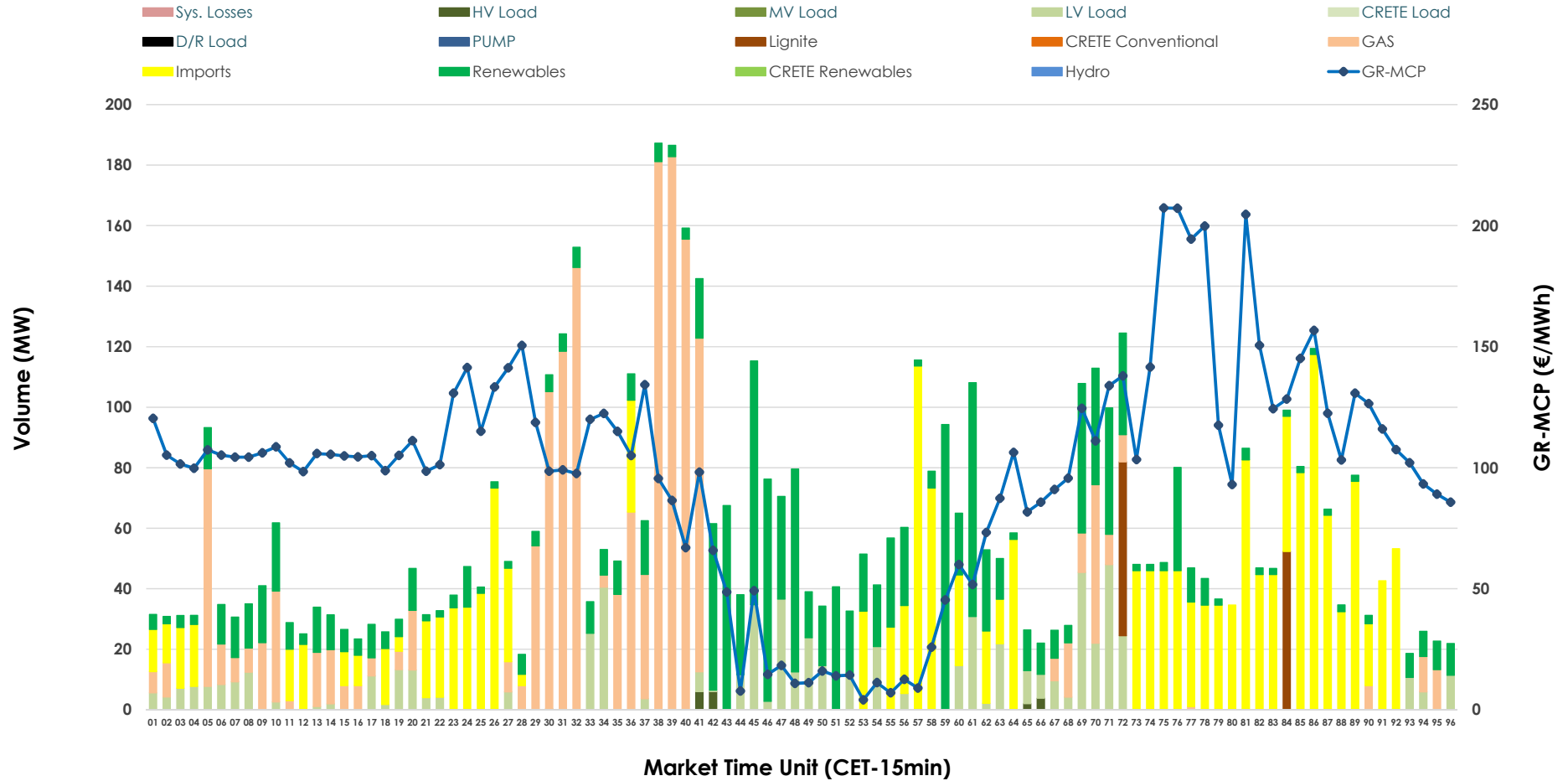


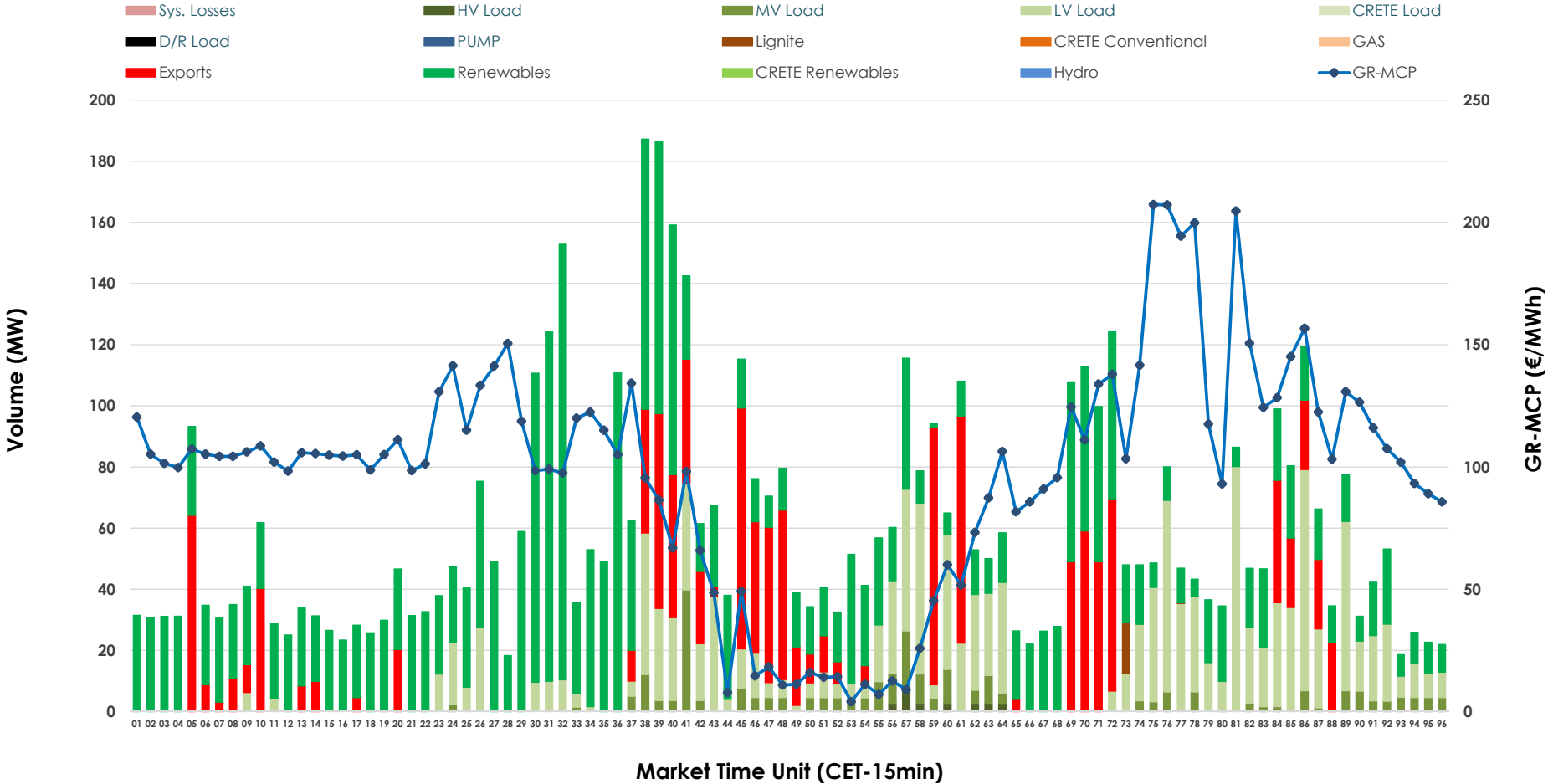


# IDA '2' Market Outlook

05.03.2026 IDA '2' Market - Sell



### 05.03.2026 IDA '2' Market - Buy



### GR Bidding Zone Weekly Figures

Delivery Day	27.02	28.02	01.03	02.03	03.03	04.03	05.03
	↗ 25%	↘ -23%	↘ -31%	↗ 130%	↗ 35%	↘ -13%	↗ 3%
<b>Avg.MCP (€/MWh)</b>	65.67	50.54	35.08	80.72	109.02	94.68	97.40
<b>Max.MCP (€/MWh)</b>	148.51	105.45	115.24	256.35	254.11	263.83	207.30
<b>Min.MCP (€/MWh)</b>	-7.89	-20.07	-35.00	-29.06	9.57	-7.85	4.08
	↗ 9%	↗ 299%	↘ -73%	↗ 6%	↘ -2%	↘ -25%	↘ -13%
<b>Tot.Vol(GWh)</b>	3.92	15.63	4.23	4.50	4.41	3.33	2.89

### Trades by Order Type

Delivery Day		27.02	28.02	01.03	02.03	03.03	04.03	05.03	
<b>Ord Price Type</b>		<b>Sell &amp; Buy Trades in (GWh) per Price Type</b>							<b>(%)</b>
<b>PPT</b>	(S)	0.000	0.000	0.000	0.000	0.000	0.000	0.000	0.00%
<b>HBD</b>	(S)	0.956	1.932	1.809	1.551	1.052	1.325	0.976	67.52%
<b>BLK</b>	(S)	0.000	0.000	0.000	0.000	0.000	0.000	0.000	0.00%
<b>CPL</b>	(S)	1.004	5.884	0.309	0.697	1.155	0.338	0.469	32.48%
<b>PPT</b>	(B)	0.000	0.000	0.000	0.000	0.000	0.000	0.000	0.00%
<b>HBD</b>	(B)	1.863	7.476	1.518	1.866	1.971	1.525	1.145	79.20%
<b>BLK</b>	(B)	0.000	0.000	0.000	0.000	0.000	0.000	0.000	0.00%
<b>CPL</b>	(B)	0.097	0.340	0.599	0.383	0.236	0.138	0.301	20.80%
		<b>Sell &amp; Buy Orders Traded per Price Type</b>							<b>(%)</b>
<b>PPT</b>	(S)	0	0	0	0	0	0	0	0.00%
<b>HBD</b>	(S)	213	205	253	221	261	137	267	100.00%
<b>BLK</b>	(S)	0	0	0	0	0	0	0	0.00%
<b>PPT</b>	(B)	0	0	0	0	0	0	0	0.00%
<b>HBD</b>	(B)	492	261	361	480	630	486	450	100.00%
<b>BLK</b>	(B)	0	0	0	0	0	0	0	0.00%

**MCP** Market Clearing Price (€/MWh)  
**PPT** Priority Price-Taking  
**HBD** Hybrid  
**BLK** Block  
**CPL** Market Coupling Flow

### Trade's Volume Mix

	Sell - MWh	Buy - MWh	
<b>Lignite</b> (1.9%)	27	4	(0.3%)
<b>Crete Conv.</b> (0.0%)	0	0	(0.0%)
<b>Gas</b> (28.2%)	407	0	(0.0%)
<b>Hydro</b> (0.0%)	0	0	(0.0%)
<b>Imports</b> (32.5%)	469		
<b>RES</b> (26.0%)	376	721	(49.9%)
<b>Crete RES</b> (0.0%)	0	0	(0.0%)
<b>HV Load</b> (0.3%)	4	6	(0.4%)
<b>MV Load</b> (0.0%)	0	67	(4.7%)
<b>LV Load</b> (11.1%)	161	346	(23.9%)
<b>Crete Load</b> (0.0%)	0	0	(0.0%)
<b>Pumping</b> (0.0%)	0	0	(0.0%)
<b>Exports</b>		301	(20.8%)
<b>Sys.Losses</b> (0.0%)	0	0	(0.0%)
<b>D/R Load</b> (0.0%)	0	0	(0.0%)

