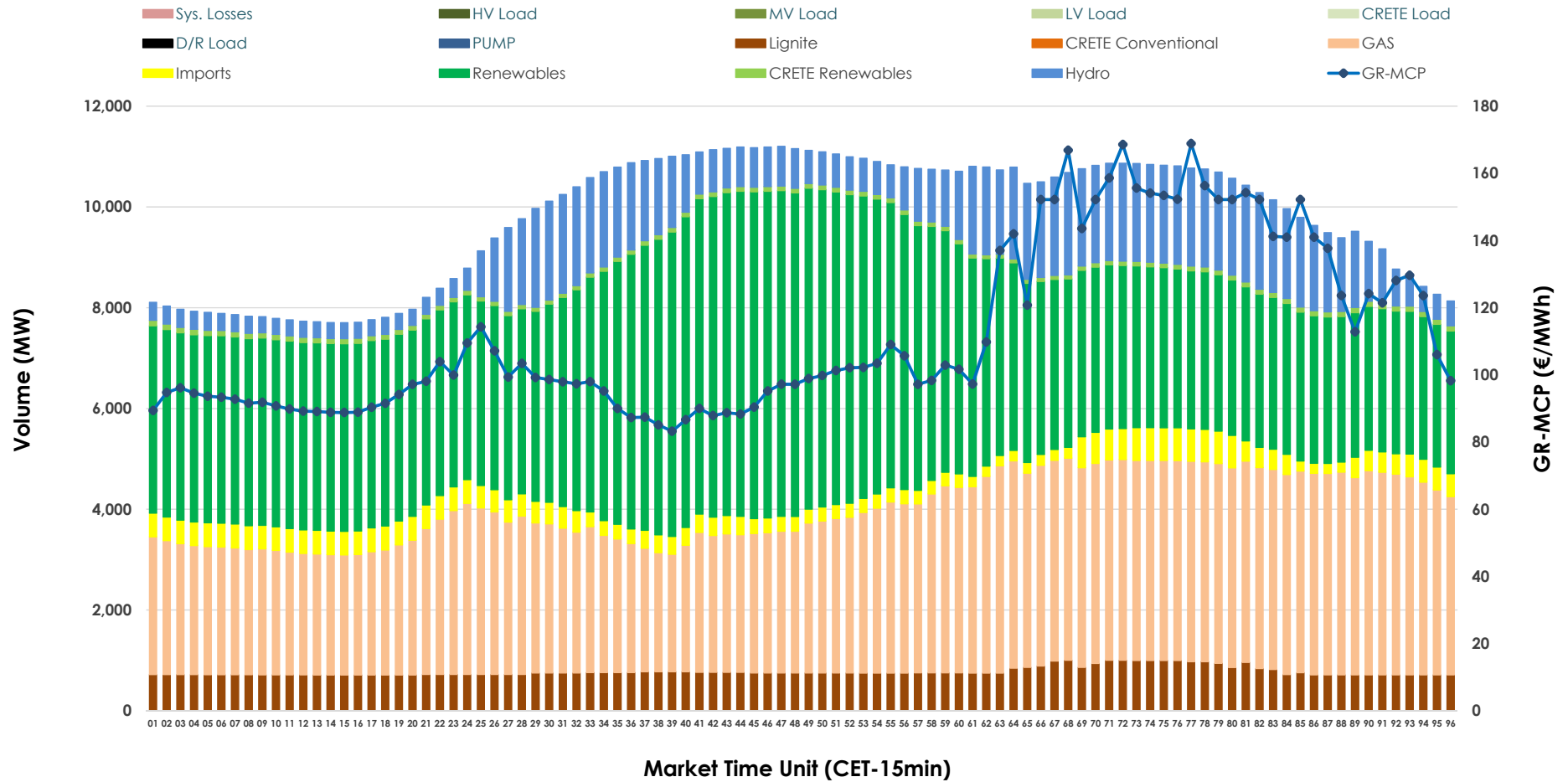


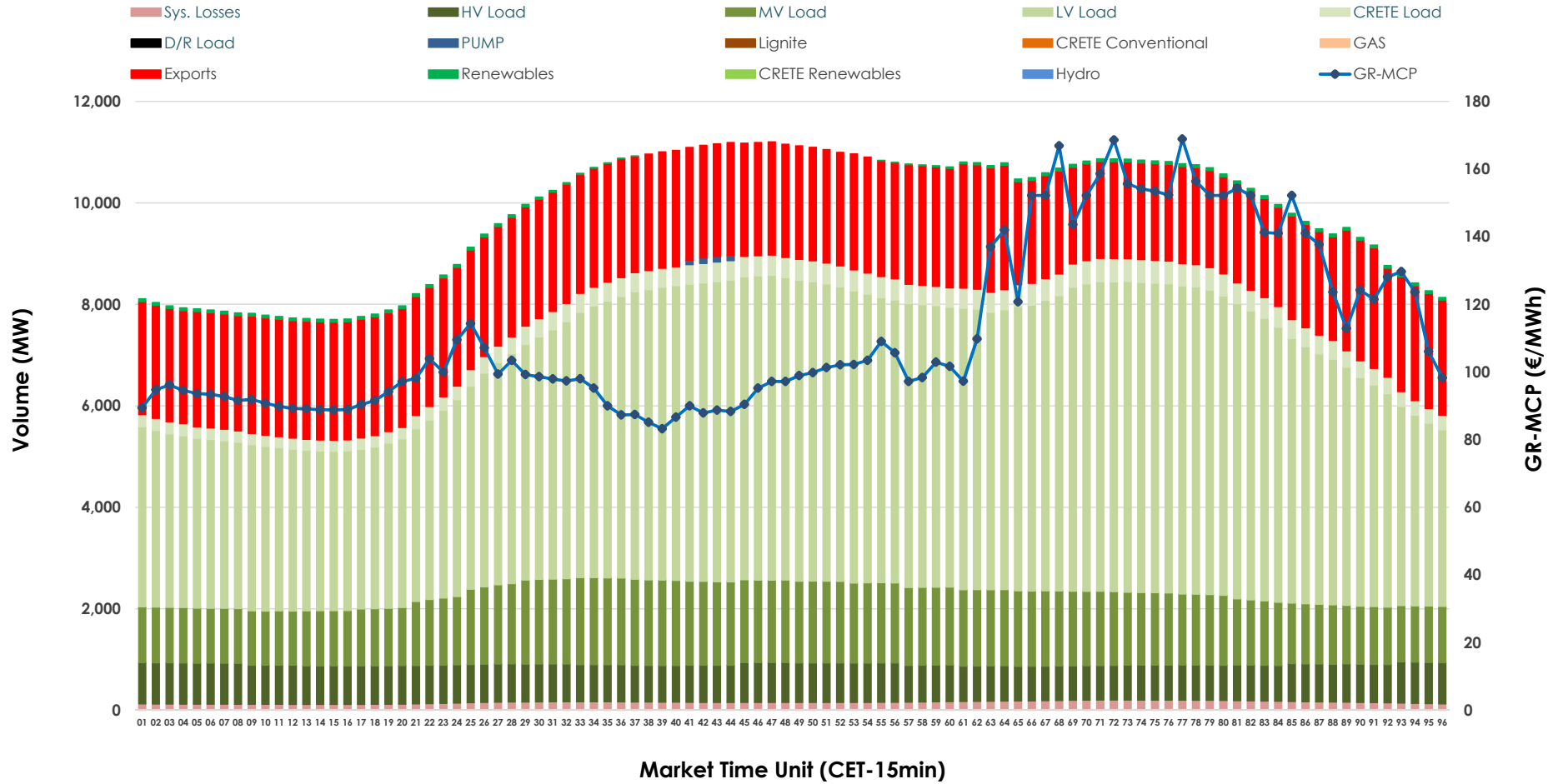


Day-Ahead Market Outlook

20.01.2026 Day-Ahead Market - Sell



20.01.2026 Day-Ahead Market - Buy



GR Bidding Zone Weekly Figures

Delivery Day	14.01	15.01	16.01	17.01	18.01	19.01	20.01
	↘ -10%	↗ 1%	↘ -5%	↘ -24%	↔ 0%	↗ 13%	↗ 2%
Avg.MCP (€/MWh)	132.48	133.24	126.58	96.63	96.80	109.79	112.19
Max.MCP (€/MWh)	314.44	292.62	207.32	145.50	161.30	179.33	168.88
Min.MCP (€/MWh)	74.99	64.77	75.00	75.87	76.30	85.27	83.22
	↘ -4%	↘ -2%	↘ -5%	↗ 3%	↘ -3%	↗ 14%	↗ 1%
Tot.Vol(GWh)	437.97	429.85	408.72	421.63	409.46	467.60	470.26

Trades by Order Type

Delivery Day		14.01	15.01	16.01	17.01	18.01	19.01	20.01	
Ord Price Type		Sell & Buy Trades in (GWh) per Price Type							(%)
PPT	(S)	67.605	66.258	64.295	84.263	93.026	88.536	85.075	36.18%
HBD	(S)	72.540	75.381	69.338	77.931	77.276	91.996	91.571	38.94%
BLK	(S)	76.235	71.196	67.165	48.620	34.426	52.894	57.008	24.25%
CPL	(S)	2.605	2.091	3.563	0.000	0.000	0.375	1.476	0.63%
PPT	(B)	16.138	16.397	15.923	14.574	14.643	17.944	17.500	7.44%
HBD	(B)	165.530	161.620	156.175	154.660	150.739	176.493	179.976	76.54%
BLK	(B)	0.000	0.000	0.000	0.000	0.000	0.000	0.000	0.00%
CPL	(B)	37.316	36.909	32.263	41.579	39.346	39.363	37.654	16.01%
		Sell & Buy Orders Traded per Price Type							(%)
PPT	(S)	2159	2180	2164	2046	2185	2109	2069	40.85%
HBD	(S)	2917	2973	2962	2727	2718	2693	2977	58.78%
BLK	(S)	25	21	22	21	14	17	19	0.38%
PPT	(B)	2269	2301	2283	2274	2404	2357	2350	36.00%
HBD	(B)	4075	4109	4065	4057	4111	4190	4177	64.00%
BLK	(B)	0	0	0	0	0	0	0	0.00%

MCP Market Clearing Price (€/MWh)
PPT Priority Price-Taking
HBD Hybrid
BLK Block
CPL Market Coupling Flow

Trade's Volume Mix

	Sell - MWh	Buy - MWh	
Lignite (7.9%)	18,634	0	(0.0%)
Crete Conv. (0.0%)	0	0	(0.0%)
Gas (33.1%)	77,934	0	(0.0%)
Hydro (11.6%)	27,370	0	(0.0%)
Imports (4.1%)	9,617		
RES (42.3%)	99,343	941	(0.4%)
Crete RES (0.9%)	2,232	0	(0.0%)
HV Load (0.0%)	0	17,868	(7.6%)
MV Load (0.0%)	0	33,382	(14.2%)
LV Load (0.0%)	0	117,393	(49.9%)
Crete Load (0.0%)	0	8,407	(3.6%)
Pumping (0.0%)	0	105	(0.0%)
Exports		53,291	(22.7%)
Sys.Losses (0.0%)	0	3,744	(1.6%)
D/R Load (0.0%)	0	0	(0.0%)

