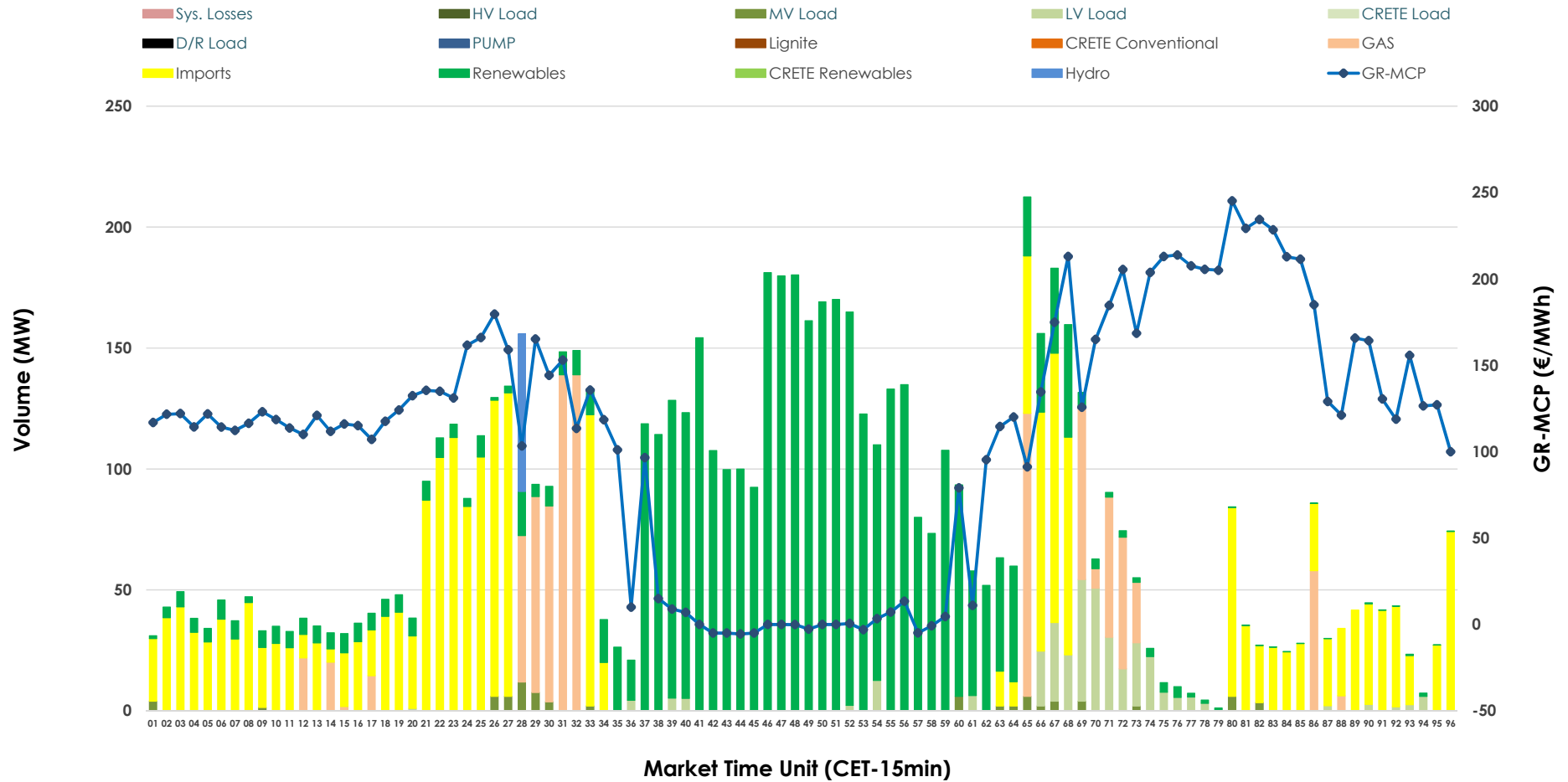


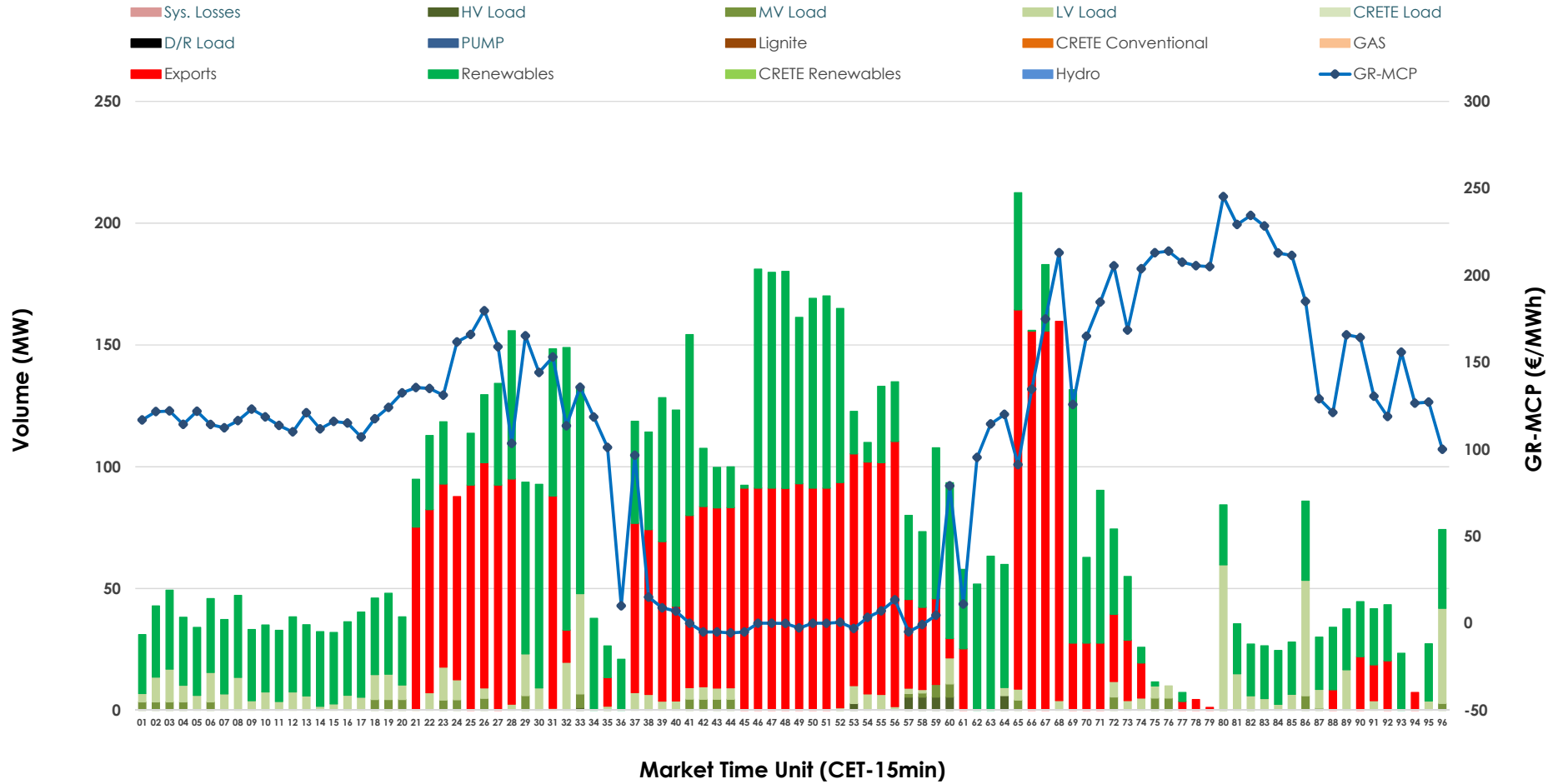


IDA '2' Market Outlook

12.03.2026 IDA '2' Market - Sell



12.03.2026 IDA '2' Market - Buy



GR Bidding Zone Weekly Figures

Delivery Day	06.03	07.03	08.03	09.03	10.03	11.03	12.03
	👇 -18%	👆 1%	👇 -5%	👆 6%	👇 -2%	👆 23%	👆 14%
Avg.MCP (€/MWh)	79.46	80.40	76.18	80.76	79.21	97.04	110.47
Max.MCP (€/MWh)	210.88	165.43	151.84	243.16	241.49	251.11	245.21
Min.MCP (€/MWh)	-22.00	-20.95	-15.92	-12.08	-20.20	-5.65	-5.52
	👆 28%	👆 42%	👇 -9%	👆 17%	👇 -8%	👆 0%	👇 -26%
Tot.Vol(GWh)	3.70	5.27	4.80	5.63	5.15	5.13	3.81

Trades by Order Type

Delivery Day		06.03	07.03	08.03	09.03	10.03	11.03	12.03	
Ord Price Type		Sell & Buy Trades in (GWh) per Price Type							(%)
PPT	(S)	0.000	0.000	0.000	0.000	0.000	0.000	0.000	0.00%
HBD	(S)	1.168	2.449	2.243	2.807	2.427	1.646	1.294	67.94%
BLK	(S)	0.000	0.000	0.000	0.000	0.000	0.000	0.000	0.00%
CPL	(S)	0.684	0.188	0.158	0.009	0.150	0.918	0.610	32.06%
PPT	(B)	0.000	0.000	0.000	0.000	0.000	0.000	0.000	0.00%
HBD	(B)	1.085	2.455	2.050	1.503	1.250	2.181	1.045	54.88%
BLK	(B)	0.000	0.000	0.000	0.000	0.000	0.000	0.000	0.00%
CPL	(B)	0.766	0.181	0.351	1.313	1.327	0.383	0.859	45.12%
		Sell & Buy Orders Traded per Price Type							(%)
PPT	(S)	0	0	0	0	0	0	0	0.00%
HBD	(S)	332	177	400	231	272	338	291	100.00%
BLK	(S)	0	0	0	0	0	0	0	0.00%
PPT	(B)	0	0	0	0	0	0	0	0.00%
HBD	(B)	501	607	554	640	443	362	315	100.00%
BLK	(B)	0	0	0	0	0	0	0	0.00%

- MCP** Market Clearing Price (€/MWh)
- PPT** Priority Price-Taking
- HBD** Hybrid
- BLK** Block
- CPL** Market Coupling Flow

Trade's Volume Mix

		Sell - MWh	Buy - MWh	
Lignite	(0.0%)	0	0	(0.0%)
Crete Conv.	(0.0%)	0	0	(0.0%)
Gas	(12.6%)	239	0	(0.0%)
Hydro	(0.9%)	16	0	(0.0%)
Imports	(32.1%)	610		
RES	(48.9%)	931	859	(45.1%)
Crete RES	(0.0%)	0	0	(0.0%)
HV Load	(0.0%)	0	8	(0.4%)
MV Load	(1.1%)	20	29	(1.5%)
LV Load	(4.6%)	87	149	(7.8%)
Crete Load	(0.0%)	0	0	(0.0%)
Pumping	(0.0%)	0	0	(0.0%)
Exports			859	(45.1%)
Sys.Losses	(0.0%)	0	0	(0.0%)
D/R Load	(0.0%)	0	0	(0.0%)

