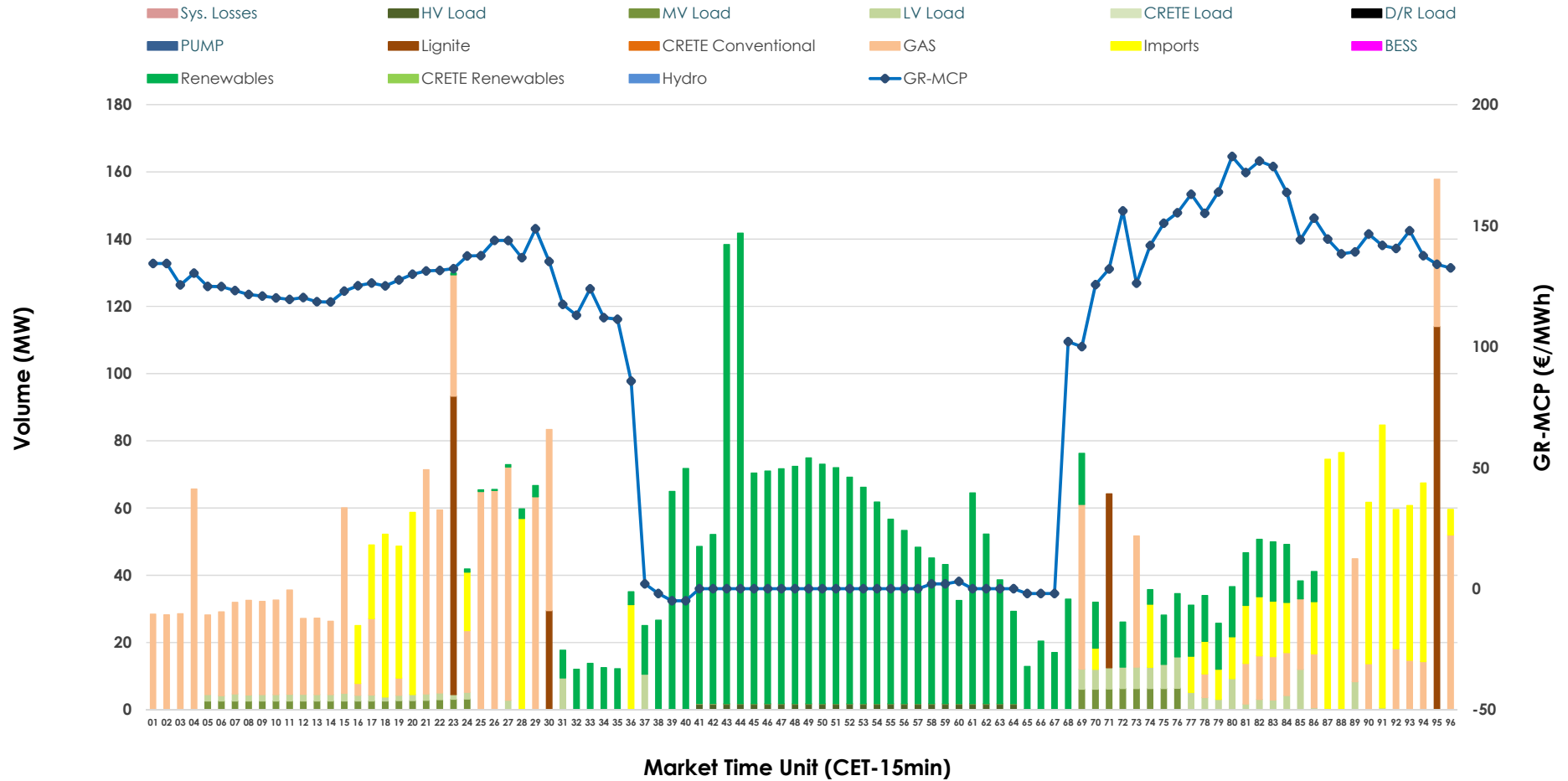


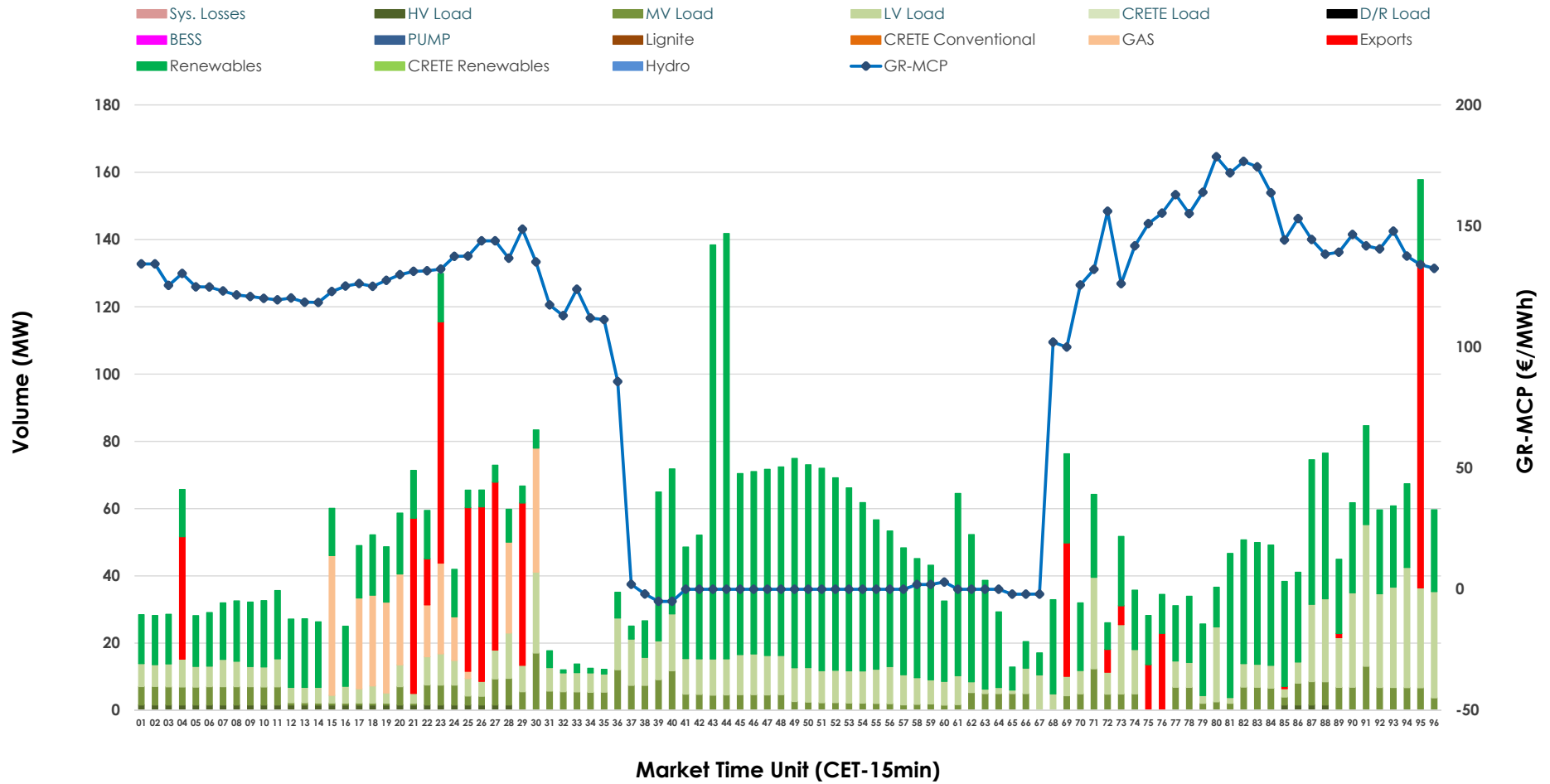


# IDA '1' Market Outlook

15.05.2026 IDA '1' Market - Sell



### 15.05.2026 IDA '1' Market - Buy



### GR Bidding Zone Weekly Figures

Delivery Day	09.05	10.05	11.05	12.05	13.05	14.05	15.05
	👇 -11%	👇 -17%	👆 6%	👇 -16%	👆 16%	👇 -2%	👉 0%
<b>Avg.MCP (€/MWh)</b>	108.76	90.58	96.19	80.50	93.55	91.29	91.30
<b>Max.MCP (€/MWh)</b>	227.06	202.09	194.26	202.70	186.71	234.22	178.58
<b>Min.MCP (€/MWh)</b>	-7.61	-7.78	-8.55	-0.21	-11.78	-11.50	-4.99
	👉 0%	👇 -15%	👇 -1%	👆 9%	👇 -5%	👇 -25%	👇 -14%
<b>Tot.Vol(GWh)</b>	4.33	3.69	3.64	3.97	3.76	2.83	2.44

### Trades by Order Type

Delivery Day		09.05	10.05	11.05	12.05	13.05	14.05	15.05	
<b>Ord Price Type</b>		<b>Sell &amp; Buy Trades in (GWh) per Price Type</b>							<b>(%)</b>
<b>PPT</b>	(S)	0.000	0.000	0.000	0.000	0.000	0.000	0.000	0.00%
<b>HBD</b>	(S)	1.767	1.660	1.641	1.889	1.826	1.325	1.004	82.26%
<b>BLK</b>	(S)	0.000	0.000	0.000	0.000	0.000	0.000	0.000	0.00%
<b>CPL</b>	(S)	0.400	0.187	0.178	0.096	0.053	0.091	0.217	17.74%
<b>PPT</b>	(B)	0.000	0.000	0.000	0.000	0.000	0.000	0.000	0.00%
<b>HBD</b>	(B)	1.927	1.469	1.655	1.804	1.642	1.306	1.081	88.53%
<b>BLK</b>	(B)	0.000	0.000	0.000	0.000	0.000	0.000	0.000	0.00%
<b>CPL</b>	(B)	0.240	0.378	0.164	0.180	0.237	0.110	0.140	11.47%
		<b>Sell &amp; Buy Orders Traded per Price Type</b>							<b>(%)</b>
<b>PPT</b>	(S)	0	0	0	0	0	0	0	0.00%
<b>HBD</b>	(S)	360	310	372	271	447	201	260	100.00%
<b>BLK</b>	(S)	0	0	0	0	0	0	0	0.00%
<b>PPT</b>	(B)	0	0	0	0	0	0	0	0.00%
<b>HBD</b>	(B)	554	945	738	677	653	649	818	100.00%
<b>BLK</b>	(B)	0	0	0	0	0	0	0	0.00%

- MCP** Market Clearing Price (€/MWh)
- PPT** Priority Price-Taking
- HBD** Hybrid
- BLK** Block
- CPL** Market Coupling Flow

### Trade's Volume Mix

	Sell - MWh	Buy - MWh	
<b>Lignite</b> (5.8%)	71	0	(0.0%)
<b>Crete Conv.</b> (0.0%)	0	0	(0.0%)
<b>Gas</b> (27.9%)	341	68	(5.5%)
<b>Hydro</b> (0.0%)	0	0	(0.0%)
<b>Imports</b> (17.7%)	217		
<b>RES</b> (42.0%)	513	641	(52.5%)
<b>Crete RES</b> (0.0%)	0	0	(0.0%)
<b>BESS</b> (0.0%)	0	0	(0.0%)
<b>HV Load</b> (0.8%)	10	13	(1.0%)
<b>MV Load</b> (2.3%)	28	114	(9.3%)
<b>LV Load</b> (3.4%)	42	246	(20.1%)
<b>Crete Load</b> (0.0%)	0	0	(0.0%)
<b>Pumping</b> (0.0%)	0	0	(0.0%)
<b>Exports</b>		140	(11.5%)
<b>Sys.Losses</b> (0.0%)	0	0	(0.0%)
<b>D/R Load</b> (0.0%)	0	0	(0.0%)

